

108 W. 35th ST.  
PH. 816-825-3380  
HAYS, KS 67601

**HERB DEINES**  
CONSULTING GEOLOGIST

COMPANY TDI Inc  
WELL Channel #1  
FIELD  
COUNTY Ellis STATE Kansas

LOGGING BY: HSO FSL & LSS, FEL, SE/H  
Log Tech SEC 15 TYP 15 RCE 19  
1 Day Production Log 4  
2 Day Computed Density Log 6

Contractor: Southwind Drilling Co. 418 21  
Completed 10-14-2011  
RTO 34881 LTD 3481  
Surface casing 8 3/4" set to 1202' w/ 3255 SMD  
Production casing

Drilling Time 2900' - RTD  
Samples 2950' - RTD

Date	Depth	Activity	Date	Depth	Activity
10-05-11	989'	Spud			
10-06-11	989'	Run down for assembly			
10-07-11	989'	Run down for assembly			
10-08-11	989'	Run down for assembly			
10-09-11	1204'	Run 5' from cemented			
10-10-11	1795'	Day			
10-11-11	2520'	Day			
10-12-11	3330'	CE5 DST (L.A.G.C)			
10-13-11	3635'	DST (L.A.G.C) Day			
10-14-11	3680'	RTD Loss: P=0			

REMARKS: Show zones in upper LKC Test and Recovered salt water. Conglomerate sand did not develop and Arbuckle too low. Recommendation: To plug and abandon well.

Herb Deines

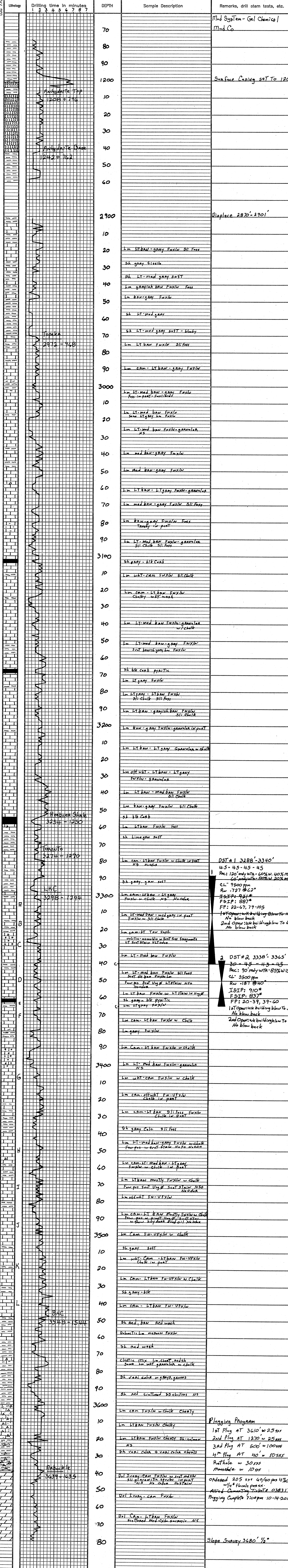
Formation	Sample	Log	Datum	* Formation	Sample	Log	Datum	*
Anhydrite Top		1203	+ 796					
Anhydrite Base		1242	+ 762					
Topoka		2972	- 968					
Heaburn Shale		3254	- 1250					
Toronto		3274	- 1270					
LKC		3298	- 1294					
BKC		3548	- 1544					
Arbuckle		3639	- 1635					
Resurgan Sand	3680	MT Resched						
RTD								
LTD		3681	- 1677					

\* Structural Position to:

LEGEND

Anhydrite	Salt	Sandstone	Shale	Carb sh	Limestone	Ool. Lime	Chert	Dolomite

SCALE " = 100'





**JOB LOG**

**SWIFT Services, Inc.**

DATE 10-8-11 PAGE NO. 1

CUSTOMER *TDI* WELL NO. *#1* LEASE *Char-Lotte* JOB TYPE *Deep Surface* TICKET NO. *20189*

CHART NO.	TIME	RATE (BPM)	VOLUME (BBL) (GAL)	PUMPS		PRESSURE (PSI)		DESCRIPTION OF OPERATION AND MATERIALS
				T	C	TUBING	CASING	
	<i>2330</i>							<i>on loc w/FE</i>
								<i>TD 1204' 8 5/8" x 23" x 1202' x 27'</i>
	<i>0335</i>							<i>start 8 5/8"</i>
	<i>0530</i>							<i>Break Circ</i>
	<i>0600</i>	<i>4.5</i>	<i>0</i>				<i>200</i>	<i>start Mud flush 50 gal</i>
	<i>0603</i>	<i>4.5</i>	<i>12/0</i>				<i>200</i>	<i>start KCL flush 20 bbl</i>
	<i>0608</i>	<i>6</i>	<i>20/0</i>				<i>250</i>	<i>start SMD Cement @ 11.8" 100 sks</i>
	<i>0616</i>	<i>6</i>	<i>46/0</i>				<i>250</i>	<i>start SMD Cement @ 12.5" 100 sks</i>
	<i>0623</i>	<i>6</i>	<i>40/0</i>				<i>250</i>	<i>start SMD Cement @ 13" 100 sks</i>
	<i>0629</i>	<i>6</i>	<i>36/0</i>				<i>250</i>	<i>start SMD Cement @ 14.5" 25 sks</i>
	<i>0633</i>		<i>21</i>					<i>End Cement Drop Plug</i>
	<i>0637</i>	<i>5</i>	<i>0</i>				<i>200</i>	<i>start Displacement</i>
	<i>0642</i>	<i>4.5</i>	<i>25</i>				<i>200</i>	<i>Circ Cement</i>
	<i>0650</i>	<i>4.5</i>	<i>30</i>				<i>250</i>	<i>catch cement</i>
	<i>0700</i>		<i>75</i>				<i>400</i>	<i>Drop Plug did not land</i>
							<i>300</i>	<i>Shut In</i>
								<i>Circ 75 sks to pit</i>
								<i>Thank you</i>
								<i>Nick, Josh F., Brandon, &amp; David</i>

# ALLIED CEMENTING CO., LLC. 038317

Federal Tax I.D.# 20-5975804

REMIT TO P.O. BOX 31  
RUSSELL, KANSAS 67665

SERVICE POINT:

Russell KS

DATE <u>10-14-2011</u>	SEC. <u>15</u>	TWP. <u>15S</u>	RANGE <u>19W</u>	CALLED OUT	ON LOCATION	JOB START <u>3:00 PM</u>	JOB FINISH <u>3:30 PM</u>
LEASE <u>CHARLOTTE</u>	WELL# <u>1</u>	LOCATION <u>ANTONINO KS, 1W 3S 1/4 NW 1/4</u>			COUNTY <u>ELLIS</u>	STATE <u>KANSAS</u>	
OLD OR NEW (Circle one)							

CONTRACTOR Southwind D&L Rigs #1

TYPE OF JOB Rotary Plug

HOLE SIZE 7 7/8 T.D. 3680

CASING SIZE 8 5/8 Surface DEPTH

TUBING SIZE DEPTH

DRILL PIPE 4 1/2 x 4 DEPTH 3610

TOOL DEPTH

PRES. MAX MINIMUM L

MEAS. LINE SHOE JOINT

CEMENT LEFT IN CSG.

PERFS.

DISPLACEMENT

OWNER

CEMENT AMOUNT ORDERED 60  
205 SX 40 48 gal  
4 # FLO Seal Per SX

COMMON	<u>123</u>	@	<u>16.25</u>	<u>1998.75</u>
POZMIX	<u>82</u>	@	<u>8.50</u>	<u>697.00</u>
GEL	<u>7</u>	@	<u>21.25</u>	<u>148.75</u>
CHLORIDE		@		
ASC		@		
	<u>Flo Seal 5/8</u>	@	<u>2.70</u>	<u>137.70</u>
		@		
		@		
		@		
		@		
		@		
HANDLING	<u>212</u>	@	<u>2.25</u>	<u>477.00</u>
MILEAGE	<u>111/19/26</u>			<u>816.20</u>
TOTAL				<u>4275.40</u>

EQUIPMENT

PUMP TRUCK CEMENTER Glen

# 417 HELPER Woody

BULK TRUCK

# 481 DRIVER Roy

BULK TRUCK

# DRIVER

REMARKS:

25 SX @ 360'

25 SX @ 12' 10'

100 SX @ 500'

10 SX @ 40' Swiper Plug

30 SX @ Rockhole

15 SX @ mouse hole

THANKS

SERVICE

DEPTH OF JOB

PUMP TRUCK CHARGE 1250.00

EXTRA FOOTAGE @

MILEAGE 35 @ 7.00 245.00

MANIFOLD @

@

35 @ 4.00 140.00

TOTAL 1635.00

CHARGE TO: T.D.T. Inc.

STREET

CITY STATE ZIP

PLUG & FLOAT EQUIPMENT

8 5/8 Dry Hole Wiper @ N-C

@

@

@

@

TOTAL

To Allied Cementing Co., LLC.  
You are hereby requested to rent cementing equipment and furnish cementer and helper(s) to assist owner or contractor to do work as is listed. The above work was done to satisfaction and supervision of owner agent or contractor. I have read and understand the "GENERAL TERMS AND CONDITIONS" listed on the reverse side.

PRINTED NAME Derby Keever

SIGNATURE [Signature]

SALES TAX (If Any)

TOTAL CHARGES 5910.40

DISCOUNT 202 IF PAID IN 30 DAYS