

108 W. 35th ST.  
PH. 786-625-3380  
HAYS, KS 67601

**HERB DENNES**  
CONSULTING GEOLOGIST

COMPANY **IDI, Inc.**  
WELL **Musch # 5**  
FIELD **Schoonover**

COUNTY **Ellis** STATE **Kansas**  
LOCATION: **330' EBL + 945' FEL, SE 1/4**  
LOGGING BY: **KB 2044**  
DATE: **9-21-2011**

LOG TECH: **9** TYPE: **15** ROE: **180** GL: **2036'**  
1. **Qual. Ind. of Log**  
2. **Dist. Compensated**  
3. **Dist. Compensated**  
4. **Dist. Compensated**  
5. **Dist. Compensated**  
6. **Dist. Compensated**  
7. **Dist. Compensated**  
8. **Dist. Compensated**  
9. **Dist. Compensated**  
10. **Dist. Compensated**  
11. **Dist. Compensated**  
12. **Dist. Compensated**  
13. **Dist. Compensated**  
14. **Dist. Compensated**  
15. **Dist. Compensated**  
16. **Dist. Compensated**  
17. **Dist. Compensated**  
18. **Dist. Compensated**  
19. **Dist. Compensated**  
20. **Dist. Compensated**  
21. **Dist. Compensated**  
22. **Dist. Compensated**  
23. **Dist. Compensated**  
24. **Dist. Compensated**  
25. **Dist. Compensated**  
26. **Dist. Compensated**  
27. **Dist. Compensated**  
28. **Dist. Compensated**  
29. **Dist. Compensated**  
30. **Dist. Compensated**  
31. **Dist. Compensated**  
32. **Dist. Compensated**  
33. **Dist. Compensated**  
34. **Dist. Compensated**  
35. **Dist. Compensated**  
36. **Dist. Compensated**  
37. **Dist. Compensated**  
38. **Dist. Compensated**  
39. **Dist. Compensated**  
40. **Dist. Compensated**  
41. **Dist. Compensated**  
42. **Dist. Compensated**  
43. **Dist. Compensated**  
44. **Dist. Compensated**  
45. **Dist. Compensated**  
46. **Dist. Compensated**  
47. **Dist. Compensated**  
48. **Dist. Compensated**  
49. **Dist. Compensated**  
50. **Dist. Compensated**  
51. **Dist. Compensated**  
52. **Dist. Compensated**  
53. **Dist. Compensated**  
54. **Dist. Compensated**  
55. **Dist. Compensated**  
56. **Dist. Compensated**  
57. **Dist. Compensated**  
58. **Dist. Compensated**  
59. **Dist. Compensated**  
60. **Dist. Compensated**  
61. **Dist. Compensated**  
62. **Dist. Compensated**  
63. **Dist. Compensated**  
64. **Dist. Compensated**  
65. **Dist. Compensated**  
66. **Dist. Compensated**  
67. **Dist. Compensated**  
68. **Dist. Compensated**  
69. **Dist. Compensated**  
70. **Dist. Compensated**  
71. **Dist. Compensated**  
72. **Dist. Compensated**  
73. **Dist. Compensated**  
74. **Dist. Compensated**  
75. **Dist. Compensated**  
76. **Dist. Compensated**  
77. **Dist. Compensated**  
78. **Dist. Compensated**  
79. **Dist. Compensated**  
80. **Dist. Compensated**  
81. **Dist. Compensated**  
82. **Dist. Compensated**  
83. **Dist. Compensated**  
84. **Dist. Compensated**  
85. **Dist. Compensated**  
86. **Dist. Compensated**  
87. **Dist. Compensated**  
88. **Dist. Compensated**  
89. **Dist. Compensated**  
90. **Dist. Compensated**  
91. **Dist. Compensated**  
92. **Dist. Compensated**  
93. **Dist. Compensated**  
94. **Dist. Compensated**  
95. **Dist. Compensated**  
96. **Dist. Compensated**  
97. **Dist. Compensated**  
98. **Dist. Compensated**  
99. **Dist. Compensated**  
100. **Dist. Compensated**

Production casing 5 1/2" set to 2747' w/ 15000 PSI DWT @ 24" w/ 10000 PSI DWT  
30 x 30 1/2 15000 PSI Sulfur Service Tricat # 2008 P/D @ 11:55 AM  
Drilling Time 2900' - RTD Samples 2900' - RTD

REMARKS: Recommendation To Run casing based on favorable STRENGTH in Anhydrite and excellent development of porosity in upper Anhydrite.

Hard Casing

Formation	Sample	Log	Datum	±	Formation	Sample	Log	Datum	±
Anhydrite Top	1215	1212	+ 834						
Anhydrite Base	1291	1249	+ 797						
Tapeka	3008	3008	- 962						
Hambura Shale	3287	3284	- 1238						
Tonganla	3308	3303	- 1287						
LAC	3333	3332	- 1286						
BAC	3555	3554	- 1508						
Anhydrite	3619	3622	- 1576						
RTD	3750								
LTD		3747	- 1703						

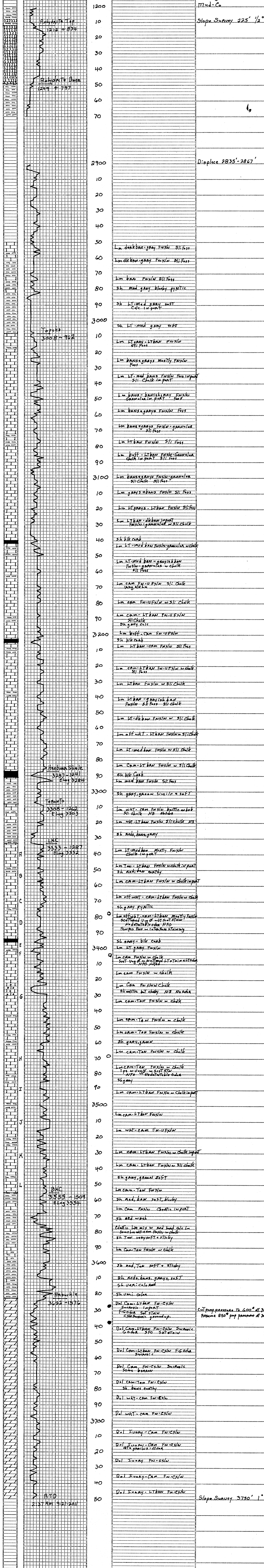
Bit Record

Make	Serial No.	Nozzles	Depth In	Depth Out	Hours

LEGEND

Anhydrite Salt Sandstone Shale Carb sh Limestone Ool. Limestone Chert Dolomite

SCALE " = 100'





# QUALITY OILWELL CEMENTING, INC.

Federal Tax I.D.# 20-2886107

Phone 785-483-2025  
Cell 785-324-1041

Home Office P.O. Box 32 Russell, KS 67665

No. 5096

Date	Sec.	Twp.	Range	County	State	On Location	Finish
9-16-11				Ellis	Kansas		9:30PM
Lease <i>Munsch</i>	Well No. <i>5</i>		Location <i>Hays 85 &amp; W Viola</i>				
Contractor <i>Southwind Drilling Rig 1</i>	Owner			To Quality Oilwell Cementing, Inc. You are hereby requested to rent cementing equipment and furnish cementer and helper to assist owner or contractor to do work as listed.			
Type Job <i>Surface</i>	T.D. <i>225</i>			Charge To <i>TDI</i>			
Hole Size <i>12 1/4</i>	Depth <i>223</i>			Street			
Csg. <i>8 3/8 23 1/2</i>	Depth			City			
Tbg. Size	Depth			State			
Tool	Shoe Joint			The above was done to satisfaction and supervision of owner agent or contractor.			
Cement Left in Csg. <i>10-15'</i>	Displace <i>134</i>			Cement Amount Ordered <i>150 Common</i>			
Meas Line	EQUIPMENT			<i>3 1/2 Gall 2 1/2 gal</i>			
Pumptrk <i>9</i> No. Cementer <i>Steve</i>	Helper			Common <i>150</i>			
Bulktrk <i>8</i> No. Driver <i>Matt</i>	Driver			Poz. Mix			
Bulktrk No. Driver <i>Brian S</i>	Driver			Gel. <i>3</i>			
JOB SERVICES & REMARKS				Calcium <i>5</i>			
Remarks:				Hulls			
Rat Hole				Salt			
Mouse Hole				Flowseal			
Centralizers				Kol-Seal			
Baskets				Mud CLR 48			
D/V or Port Collar				CFL-117 or CD110 CAF 38			
<i>Cement did Circulate</i>				Sand			
				Handling <i>158</i>			
				Mileage			
				FLOAT EQUIPMENT			
				Guide Shoe			
				Centralizer			
				Baskets			
				AFU Inserts			
				Float Shoe			
				Latch Down			
				Pumptrk Charge <i>Surface</i>			
				Mileage <i>8</i>			
				Tax			
				Discount			
				Total Charge			
X Signature <i>Frank Rowel</i>							

*Thank You*

*Frank Rowel*