

# GEOLOGIST'S REPORT

DRILLING TIME AND SAMPLE LOG

COMPANY: Trans Pacific Oil Corp.

LEASE: #1-10 Cumberland A

FIELD: \_\_\_\_\_

LOCATION: NE SE SE

SEC: 10 TWP: 16S RGE: 20W

COUNTY: Rush STATE: Kansas

CONTRACTOR: Rickell Drilling Rig 10

SPID: 8/23/11 COMP: 8/31/11

RID: 3902 LTD: 3904

MUD UP: 3435 TYPE MUD: Chemical

SAMPLES SAVED FROM: 3450 TO: 7D

DRILLING TIME KEPT FROM: 3100 TO: 7D

SAMPLES EXAMINED FROM: 3450 TO: 7D

GEOLOGICAL SUPERVISION FROM: 3450 TO: 7D

GEOLOGIST ON WELL: W. Joyce Dillema

ORINATION TOPS LOG

ANHYDRITE 1385 (+751)

SALT 1424 (+723)

SANDSTONE 1424 (+723)

SHALE 1424 (+723)

CARBON 1424 (+723)

LIMESTONE 1424 (+723)

OOL. LIM. 1424 (+723)

CHERT 1424 (+723)

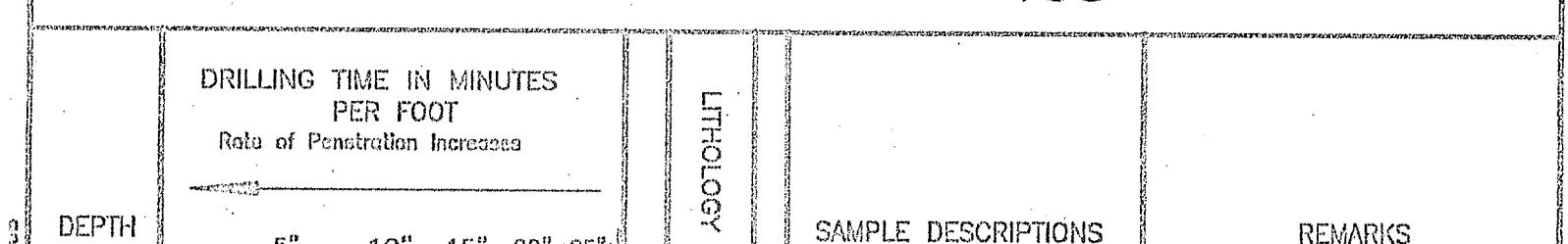
DOL. LIM. 1424 (+723)

RTD 3902 (+758) LTD 3904 (+760)

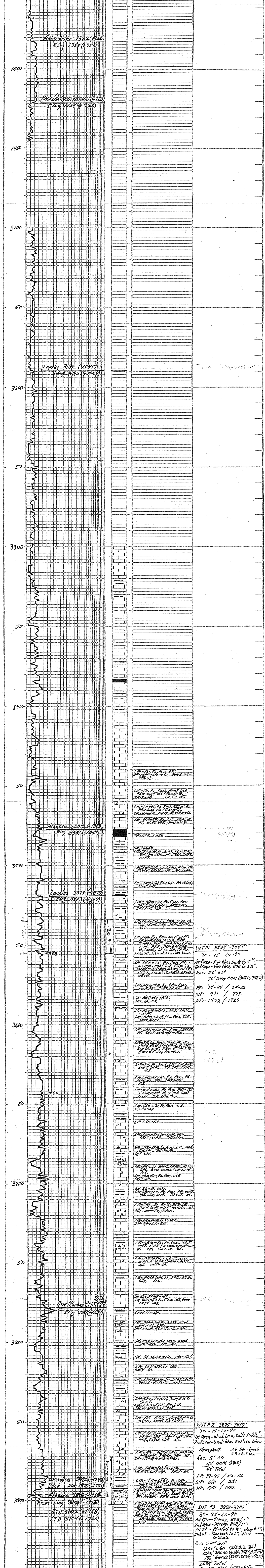
ELEVATIONS  
K.B. 2144

REMARKS  
Due to good shows in the Anhydrite dolomite good drill stem test results, 5 1/2" production casing was set 4' off bottom to complete the top of the Anhydrite.  
Respectfully,  
W. Joyce Dillema

## LEGEND



SCALE " = 100'



COMPANY: Trans Pacific Oil Corp. LEASE: #1-10 Cumberland A ELEVATION: K.B. 2144

LOCATION: NE SE SE SEC: 10 TWP: 16S RGE: 20W

COUNTY: Rush STATE: Kansas