



DIAMOND TESTING
 P.O. Box 157
 HOISINGTON, KANSAS 67544
 (800) 542-7313

TIME ON: 22:50(12.5)

TIME OFF: 09:03(12.6)

DRILL-STEM TEST TICKET
 FILE: Butler 1/4 dot 1

Company Trans Pacific Oil Corp Lease & Well No. Butler 'A' #1-6
 Contractor Sterling Rig 2 Charge to T.P.O.C.
 Elevation 2266 KCB Formation LANS. 'B' Effective Pay _____ Ft. Ticket No. _____
 Date 12.6.11 Sec. 6 Twp. 25 S Range 20 W County Edwards State KANSAS
 Test Approved By W. Bruce B. [Signature] Diamond Representative ROGER D. FRIEDLY

Formation Test No. 1 Interval Tested from 4128 ft. to 4160 ft. Total Depth 4160 ft.
 Packer Depth 4123 ft. Size 6 3/4 in. Packer depth _____ ft. Size 6 3/4 in.
 Packer Depth 4128 ft. Size 6 3/4 in. Packer depth _____ ft. Size 6 3/4 in.

Depth of Selective Zone Set _____
 Top Recorder Depth (Inside) 4116 ft. Recorder Number 8471 Cap. 10,000 P.S.I.
 Bottom Recorder Depth (Outside) 4157 ft. Recorder Number 3851 Cap. 5700 P.S.I.
 Below Straddle Recorder Depth _____ ft. Recorder Number _____ Cap. _____ P.S.I.

Mud Type Chem. Viscosity 43 Drill Collar Length 182 ft. I.D. 2 1/4 in.
 Weight 8.9 Water Loss 8.4 cc. Weight Pipe Length 0 ft. I.D. 2 7/8 in.
 Chlorides 9200 P.P.M. Drill Pipe Length 3920 ft. I.D. 3 1/2 in.
 Jars: Make STERLING Serial Number N/A Test Tool Length 26 ft. Tool Size 3 1/2-IF in.
 Did Well Flow? No Reversed Out No Anchor Length 32 ft. Size 4 1/2-FH in.
 Main Hole Size 7 7/8 Tool Joint Size 4 1/2 XH in. Surface Choke Size 1 in. Bottom Choke Size 5/8 in.

Blow: 1st Open: Weak 1/2" blow inc to 7" (W 1/4 bb)
 2nd Open: Weak 1/2" blow inc to 8" (Nobbb)

Recovered 149 ft. of mw 82% WTR, 18% mud
 Recovered 182 ft. of SW 100% WTR
 Recovered 331 ft. of Total Fluid
 Recovered _____ ft. of Chlorides 94,000 Ppm

Recovered _____ ft. of <u>PH 5.5</u>	Price Job
Recovered _____ ft. of <u>RW 1.08 @ 72°</u>	Other Charges
Remarks: <u>Diesel in Bucket</u>	Insurance
<u>Tool Sample: 100% SW - Few oil specks</u>	Total
<u>Good Gassy odor</u>	

Time Set Packer(s) 2:07 A.M. P.M. Time Started Off Bottom 6:22 A.M. P.M. Maximum Temperature 117

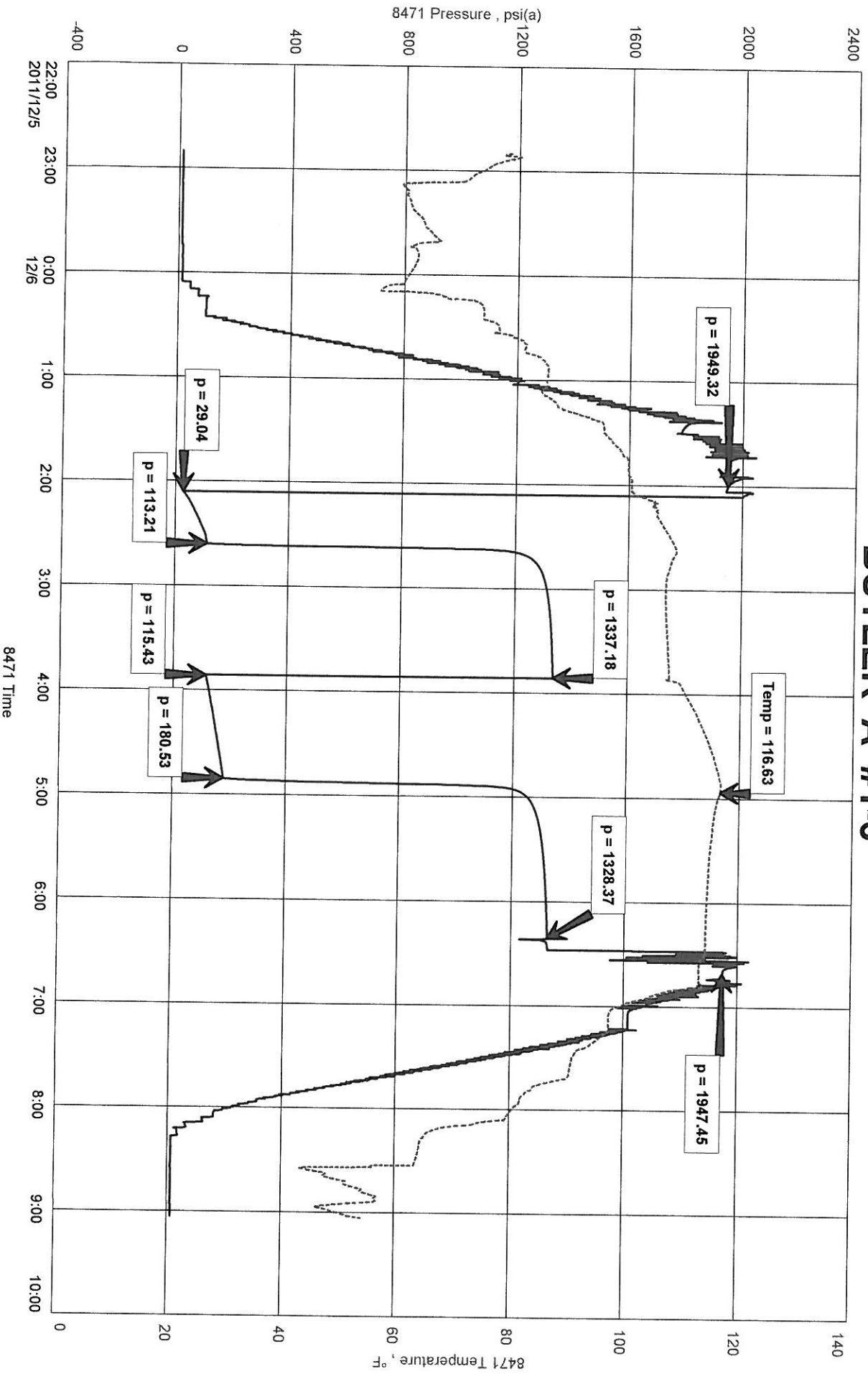
Initial Hydrostatic Pressure..... (A) 1949 P.S.I.
 Initial Flow Period..... Minutes 30 (B) 29 P.S.I. to (C) 113 P.S.I.
 Initial Closed In Period..... Minutes 75 (D) 1337 P.S.I.
 Final Flow Period..... Minutes 60 (E) 115 P.S.I. to (F) 181 P.S.I.
 Final Closed In Period..... Minutes 90 (G) 1328 P.S.I.
 Final Hydrostatic Pressure..... (H) 1947 P.S.I.

Diamond Testing shall not be liable for damages of any kind to the property or personnel of the one for whom a test is made or for any loss suffered or sustained, directly or indirectly, through the use of its equipment, or its statement or opinion concerning the result of any test. Tools lost or damaged in the hole shall be paid for at cost by the party for whom the test is made.

TRANS PACIFIC OIL CORP.
DST #1 LANSING 4,128' - 4,160'
Start Test Date: 2011/12/05
Final Test Date: 2011/12/06

BUTLER 'A' #1-6

BUTLER 'A' #1-6
Formation: DST #1 LANSING 'B' 4,128' - 4,160'



DIAMOND TESTING

General Information Report

General Information

Company Name TRANS PACIFIC OIL CORP.
Contact ALAN BANTA
Well Name BUTLER 'A' #1-6
Unique Well ID DST #1 LANSING 4,128' - 4,160'
Surface Location SEC 6-25S-20W EDWARDS COUNTY, KS
Field WILDCAT
Well Type Vertical
Test Type CONVENTIONAL DRILL-STEM TEST
Formation DST #1 LANSING 'B' 4,128' - 4,160'
Well Fluid Type 01 Oil

Representative ROGER D. FRIEDLY
Well Operator TRANS PACIFIC OIL CORP.
Report Date 2011/12/06
Prepared By ROGER D. FRIEDLY

Qualified By BRYCE BIDLEMAN

Start Test Date 2011/12/05
Final Test Date 2011/12/06

Start Test Time 22:50:00
Final Test Time 09:03:00

Test Recovery:

RECOVERED: 149' MW 82% WTR, 18% MUD
 182' SW 100% SW
 331' TOTAL FLUID

TOOL SAMPLE: 100% SW FEW OIL SPECKS AND GASSY ODOR

CHLORIDES: 94,000 Ppm
PH: 5.5
RW: .08 @ 72 deg.



DIAMOND TESTING
 P.O. Box 157
 HOISINGTON, KANSAS 67544
 (800) 542-7313

TIME ON: 01:20

TIME OFF: 11:23

DRILL-STEM TEST TICKET

FILE: butler-a-6dst2

Company Trans Pac. Oil Corp Lease & Well No. Butler 'A' #1-6
 Contractor Sterling Rig 2 Charge to T.P.O.C.
 Elevation 2266 KB Formation Miss. Effective Pay _____ Ft. Ticket No. _____
 Date 12.8.11 Sec. 6 Twp. 25 S Range 20 W County Edwards State KANSAS
 Test Approved By W. Bruce Bidman Diamond Representative ROGER D. FRIEDLY

Formation Test No. 2 Interval Tested from 4672 ft. to 4715 ft. Total Depth 4715 ft.
 Packer Depth 4667 ft. Size 6 3/4 in. Packer depth _____ ft. Size 6 3/4 in.
 Packer Depth 4672 ft. Size 6 3/4 in. Packer depth _____ ft. Size 6 3/4 in.

Depth of Selective Zone Set _____
 Top Recorder Depth (Inside) 4660 ft. Recorder Number 8471 Cap. 10,000 P.S.I.
 Bottom Recorder Depth (Outside) 4712 ft. Recorder Number 3851 Cap. 5700 P.S.I.
 Below Straddle Recorder Depth _____ ft. Recorder Number _____ Cap. _____ P.S.I.

Mud Type Chem Viscosity 52 Drill Collar Length 182 ft. I.D. 2 1/4 in.
 Weight 9.3 Water Loss 9.6 cc. Weight Pipe Length 0 ft. I.D. 2 7/8 in.
 Chlorides 11,400 P.P.M. Drill Pipe Length 4464 ft. I.D. 3 1/2 in.
 Jars: Make STERLING Serial Number NIA Test Tool Length 26 ft. Tool Size 3 1/2-IF in.
 Did Well Flow? No Reversed Out No Anchor Length 43 ft. Size 4 1/2-FH in.
 Main Hole Size 7 7/8 Tool Joint Size 4 1/2 XH in. Surface Choke Size 1 in. Bottom Choke Size 5/8 in.

Blow: 1st Open: Weak 1/2" blow inc to 4" (No bb)
 2nd Open: Weak surface blow inc to 5 1/2" (No bb)

Recovered 60 ft. of Gas in Pipe
 Recovered 2 ft. of Clear oil 38.5 Gravity @ 60 deg.
 Recovered 155 ft. of HG GWCW 8% Gas, 29% Oil, 17% WTR, 46% mud
 Recovered 60 ft. of GFCW 8% Gas, 12% Oil, 26% WTR, 54% mud
 Recovered 217 ft. of Total Fluid Chlorides 17,000 Ppm
 Recovered _____ ft. of PH 6.0

Remarks: RW .34 @ 56 deg
Diesel in Bucket
Tool Sample: 2% Gas, 30% oil, 40% WTR, 28% mud

Time Set Packer(s) 5:28 A.M. P.M. Time Started Off Bottom 9:43 A.M. P.M. Maximum Temperature 121

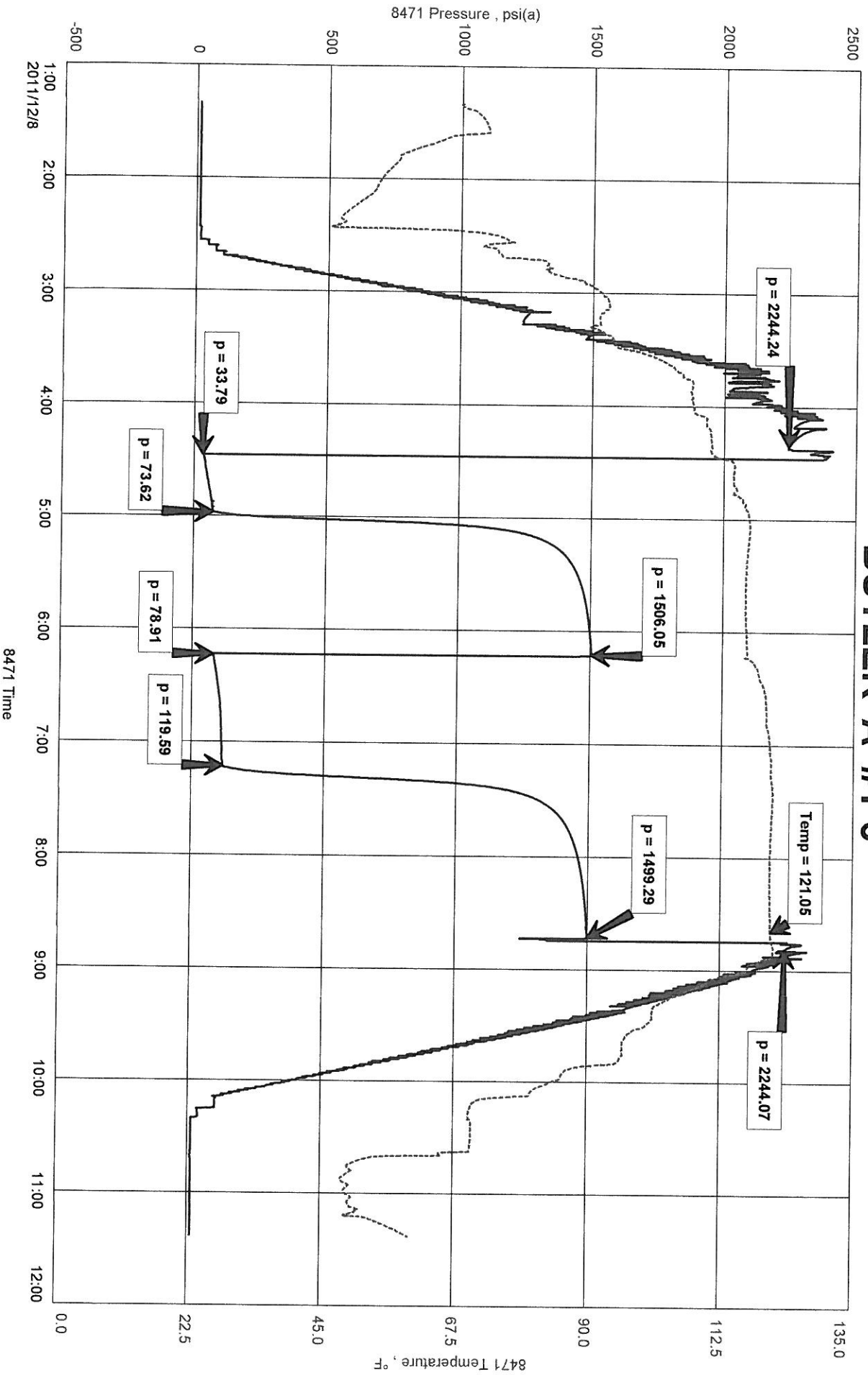
Initial Hydrostatic Pressure..... (A) 2244 P.S.I.
 Initial Flow Period..... Minutes 30 (B) 34 P.S.I. to (C) 74 P.S.I.
 Initial Closed In Period..... Minutes 75 (D) 1506 P.S.I.
 Final Flow Period..... Minutes 60 (E) 79 P.S.I. to (F) 120 P.S.I.
 Final Closed In Period..... Minutes 90 (G) 1499 P.S.I.
 Final Hydrostatic Pressure..... (H) 2,244 P.S.I.

Diamond Testing shall not be liable for damages of any kind to the property or personnel of the one for whom a test is made or for any loss suffered or sustained, directly or indirectly, through the use of its equipment, or its statement or opinion concerning the result of any test. Tools lost or damaged in the hole shall be paid for at cost by the party for whom the test is made.

TRANS PACIFIC OIL CORP.
DST #2 MISSISSIPPI 4.672' - 4.715'
Start Test Date: 2011/11/2/08
Final Test Date: 2011/11/2/08

BUTLER 'A' #1-6
Formation: DST #2 MISSISSIPPI 4.672' - 4.715'

BUTLER 'A' #1-6



DIAMOND TESTING

General Information Report

General Information

Company Name	TRANS PACIFIC OIL CORP.	Representative	ROGER D. FRIEDLY
Contact	ALAN BANTA	Well Operator	TRANS PACIFIC OIL CORP.
Well Name	BUTLER 'A' #1-6	Report Date	2011/12/08
Unique Well ID	DST #2 MISSISSIPPI 4,672' - 4,715'	Prepared By	ROGER D. FRIEDLY
Surface Location	SEC 6-25S-20W EDWARDS COUNTY, KS	Qualified By	BRYCE BIDLEMAN
Field	WILDCAT		
Well Type	Vertical		
Test Type	CONVENTIONAL DRILL-STEM TEST		
Formation	DST #2 MISSISSIPPI 4,672' - 4,715'		
Well Fluid Type	01 Oil		
Start Test Date	2011/12/08	Start Test Time	01:20:00
Final Test Date	2011/12/08	Final Test Time	11:23:00

Test Recovery:

RECOVERED:	60'	GAS IN PIPE
	2'	CLEAN OIL 38.5 GRAVITY @ 60 deg.
	155'	HG&WCOM 8% GAS, 29% OIL, 17% WTR, 46% MUD
	60'	G&OCWM 8% GAS, 12% OIL, 26% WTR, 54% MUD
	217'	TOTAL FLUID

TOOL SAMPLE: 2% GAS, 30% OIL, 40% WTR, 28% MUD

CHLORIDES: 17,000 Ppm
PH: 6.0
RW: .34 @ 56 deg.



DIAMOND TESTING
 P.O. Box 157
 HOISINGTON, KANSAS 67544
 (800) 542-7313

TIME ON: 19:12 (12.8)

TIME OFF: 04:16 (12.9)

DRILL-STEM TEST TICKET

FILE: butler91-6dst3

Company Trans Pac Oil Corp Lease & Well No. Butler 'A' #1-6
 Contractor Sterling Rig 3 Charge to T.P.O.C.
 Elevation 12.8.11 Formation Miss Effective Pay _____ Ft. Ticket No. _____
 Date 12.8.11 Sec. 6 Twp. 25 S Range 20 W County Edwards State KANSAS
 Test Approved By W. Ryan Biegan Diamond Representative ROGER D. FRIEDLY

Formation Test No. 3 Interval Tested from 4715 ft. to 4720 ft. Total Depth 4720 ft.
 Packer Depth 4710 ft. Size 6 3/4 in. Packer depth _____ ft. Size 6 3/4 in.
 Packer Depth 4715 ft. Size 6 3/4 in. Packer depth _____ ft. Size 6 3/4 in.
 Depth of Selective Zone Set _____

Top Recorder Depth (Inside) 4703 ft. Recorder Number 8471 Cap. 10,000 P.S.I.
 Bottom Recorder Depth (Outside) 4717 ft. Recorder Number 3851 Cap. 5700 P.S.I.
 Below Straddle Recorder Depth _____ ft. Recorder Number _____ Cap. _____ P.S.I.

Mud Type Chem Viscosity 49 Drill Collar Length 182 ft. I.D. 2 1/4 in.
 Weight 9.3 Water Loss 12.4 cc. Weight Pipe Length 0 ft. I.D. 2 7/8 in.
 Chlorides 14,600 P.P.M. Drill Pipe Length 4507 ft. I.D. 3 1/2 in.
 Jars: Make STERLING Serial Number N/A Test Tool Length 26 ft. Tool Size 3 1/2-IF in.
 Did Well Flow? NO Reversed Out NO Anchor Length 5 ft. Size 4 1/2-FH in.
 Main Hole Size 7 7/8 Tool Joint Size 4 1/2 XH in. Surface Choke Size 1 in. Bottom Choke Size 5/8 in.

Blow: 1st Open: Weak 1/4" blow inc to 9" (No bb)
 2nd Open: Weak surface blow inc to BTM BKT 48 min (No bb)

Recovered 30 ft. of Gas in Pipe
 Recovered 45 ft. of WM 45% WTR, 55% mud - few oil specks - free oil
 Recovered 126 ft. of MW 78% WTR, 22% mud on top
 Recovered 245 ft. of SW 100% WTR Chlorides 35,000 ppm
 Recovered 416 ft. of Total Fluid PH 6.0
 Recovered _____ ft. of RW 118 @ 62

Remarks: Diesel in bucket
Tool Sample: 100% SW - Good oil spots

Time Set Packer(s) 9:14 A.M. P.M. Time Started Off Bottom 1:29 A.M. P.M. Maximum Temperature 133

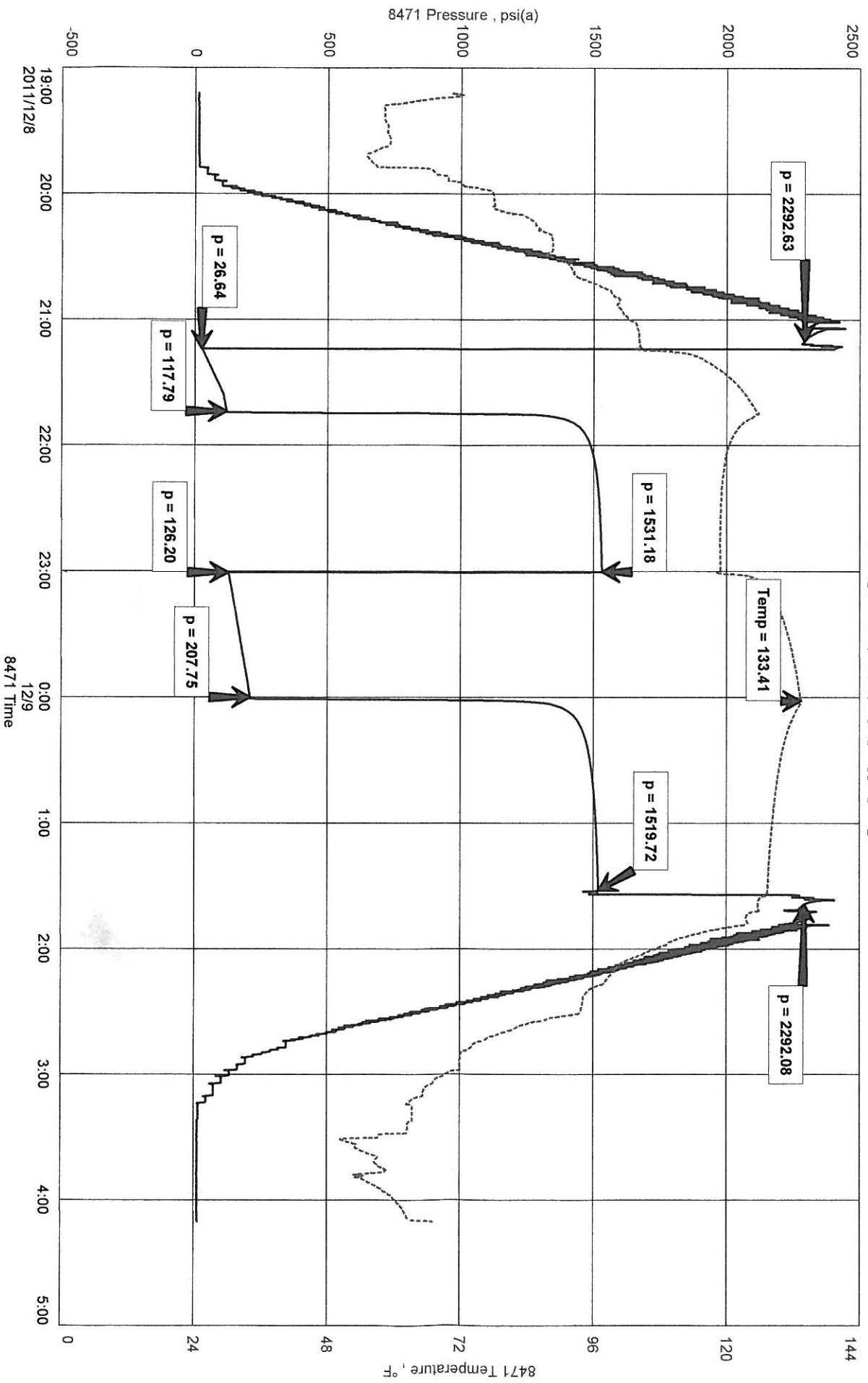
Initial Hydrostatic Pressure..... (A) 2293 P.S.I.
 Initial Flow Period..... Minutes 30 (B) 27 P.S.I. to (C) 118 P.S.I.
 Initial Closed In Period..... Minutes 75 (D) 1531 P.S.I.
 Final Flow Period..... Minutes 60 (E) 126 P.S.I. to (F) 208 P.S.I.
 Final Closed In Period..... Minutes 90 (G) 1,520 P.S.I.
 Final Hydrostatic Pressure..... (H) 2292 P.S.I.

Diamond Testing shall not be liable for damages of any kind to the property or personnel of the one for whom a test is made or for any loss suffered or sustained, directly or indirectly, through the use of its equipment, or its statement or opinion concerning the result of any test. Tools lost or damaged in the hole shall be paid for at cost by the party for whom the test is made.

TRANS PACIFIC OIL CORP.
DST #3 MISSISSIPPI 4,715' - 4,720'
Start Test Date: 2011/12/08
Final Test Date: 2011/12/09

BUTLER 'A' #1-6
Formation: DST #3 MISSISSIPPI 4,715' - 4,720'

BUTLER 'A' #1-6



DIAMOND TESTING

General Information Report

General Information

Company Name	TRANS PACIFIC OIL CORP.	Representative	ROGER D, FRIEDLY
Contact	ALAN BANTA	Well Operator	TRANS PACIFIC OIL CORPORATION
Well Name	BUTLER 'A' #1-6	Report Date	2011/12/09
Unique Well ID	DST #3 MISSISSIPPI 4,715' - 4,720'	Prepared By	ROGER D. FRIEDLY
Surface Location	SEC 6-25S-20W EDEWARD COUNTY, KS	Qualified By	BRYCE BIDLEMAN
Field	WILDCAT		
Well Type	Vertical		
Test Type	CONVENTIONAL DRILL-STEM TEST		
Formation	DST #3 MISSISSIPPI 4,715' - 4,720'		
Well Fluid Type	01 Oil		
Start Test Date	2011/12/08	Start Test Time	19:12:00
Final Test Date	2011/12/09	Final Test Time	04:10:00

Test Recovery:

RECOVERED:	30'	GAS IN PIPE
	45'	WM 45% WTR, 55% MUD - FEW OIL SPECKS - GOOD FREE OIL ON TOP
	126'	MW 78% WTR, 22% MUD
	245'	SW 100% WTR
	416'	TOTAL FLUID

TOOL SAMPLE: 100% SW - GOOD OIL SPOTS

CHLORIDES: 35,000 Ppm
PH: 6.0
RW: .18 @ 62