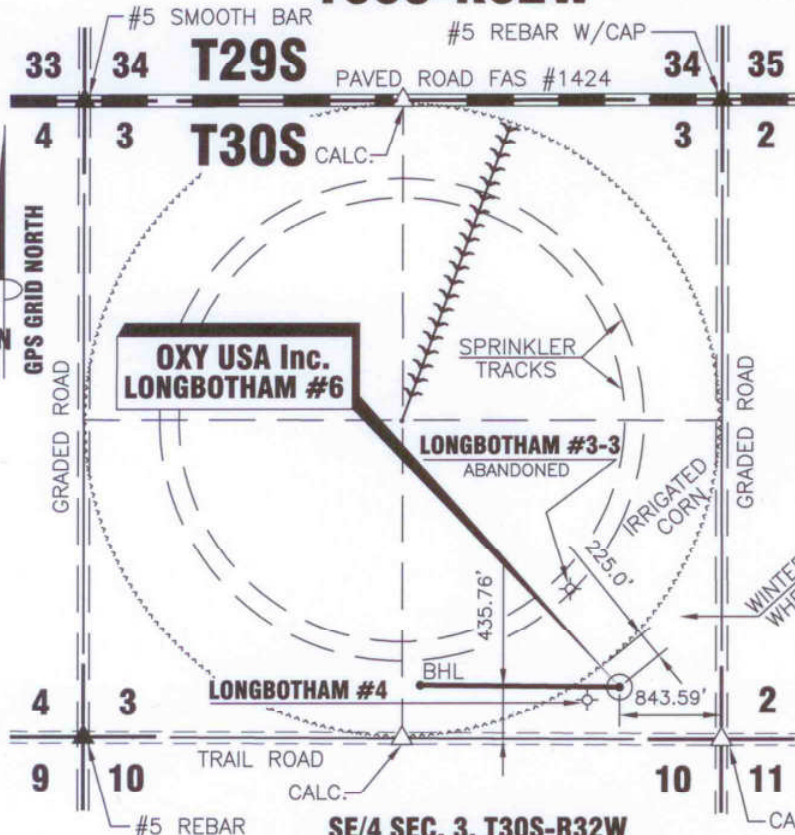


# T30S-R32W

# "ASBUILT"



DATE 12/28/2011

OPERATOR OXY U.S.A.

WELL NAME LONGBOTHAM #6

LOCATION SE/4 SEC. 3, T30S-R32W

TOP HOLE LOCATION

FOOTAGES & 435.76' F S L

RELATIONS 843.59' F E L

ELEVATION 2886.73'

BOTTOM HOLE LOCATION

FOOTAGES & 372.80' F S L

RELATIONS 2492.06' F E L

ELEVATION -2836.17'

DISTANCE TO EXISTING WELL 288.83' LONGBOTHAM #4

AUTHORIZED BY BETH HICKERT

**SE/4 SEC. 3, T30S-R32W  
HASKELL COUNTY, KANSAS**

CROP DRYLAND WINTER WHEAT

**TOP HOLE LOCATION**

LATITUDE 37°27'41.13840" N = 37.46143° N

LONGITUDE 100°48'02.31991" W = 100.80064° W

STATE PLANE COORD. X = 1332291.90

KANSAS SOUTH ZONE Y = 297622.14

NAD 27

**BOTTOM HOLE LOCATION**

LATITUDE 37°27'41.36751" N = 37.46129° N

LONGITUDE 100°48'22.75922" W = 100.80632° W

STATE PLANE COORD. X = 1330642.90

KANSAS SOUTH ZONE Y = 297614.02

NAD 27

DRIVING DIRECTIONS USED TO STAKE  
WELL FROM KNOWN LANDMARK OR CITY  
FROM:

FROM THE INTERSECTION HWY #83 & FAS  
#1424 WEST OF SUBLETTE, KS; THENCE  
EAST 4.0 MILES; THENCE SOUTH 1.0 MILE;  
THENCE WEST 843.59 FT.; THENCE NORTH  
435.76 FT. INTO.

NOTE: CONTRACTOR TO CONTACT ONE CALL @ 1-800-DIG SAFE  
PRIOR TO ANY EXCAVATION OR CONSTRUCTION.

**THEODORE V. HARDER**  
LICENSED  
1-9-2012  
LS-1097  
KANSAS  
LAND SURVEYOR  
*Theodore V. Harder*  
Theodore V. Harder, S.L.S. No. 1097



**OXY USA Inc.**

1117 N. HIGHWAY 27  
P.O. DRAWER 330  
ELKHART, KANSAS 67950  
(620)697-2500

**ASBUILT WELL LOCATION OF THE LONGBOTHAM #6  
LOCATED IN THE SE/4 SEC. 3, T30S - R32W  
HASKELL COUNTY, KANSAS**

NO.	DWN.	REVISIONS	DATE

SCALE: 1" = 1500' DATE: 12/28/2011

WORK ORDER NO.:

**HARDER**  
AND ASSOCIATES "locating our world"  
LAND SURVEYING - GPS SPECIALISTS  
P.O. BOX 518 514 MORTON  
Elkhart, Kansas 67950  
Phone: (620) 697-2696  
Fax: (620) 697-4175  
E-MAIL: tharder@elkhart.com

CO KS NM OK

DRAWN BY: DRF CHECKED BY: TVH APPROVED BY: AUTHORIZED BY: B. HICKERT

DRAWING NO. OX1211A12