

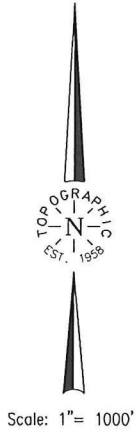
**TOPOGRAPHIC LAND SURVEYORS**

6709 NORTH CLASSEN BLVD., OKLA. CITY, OKLA. 73116 • LOCAL (405) 843-4847 • OUT OF STATE (800) 654-3219  
 Certificate of Authorization No. LS-99, Exp. Dec. 31, 2011

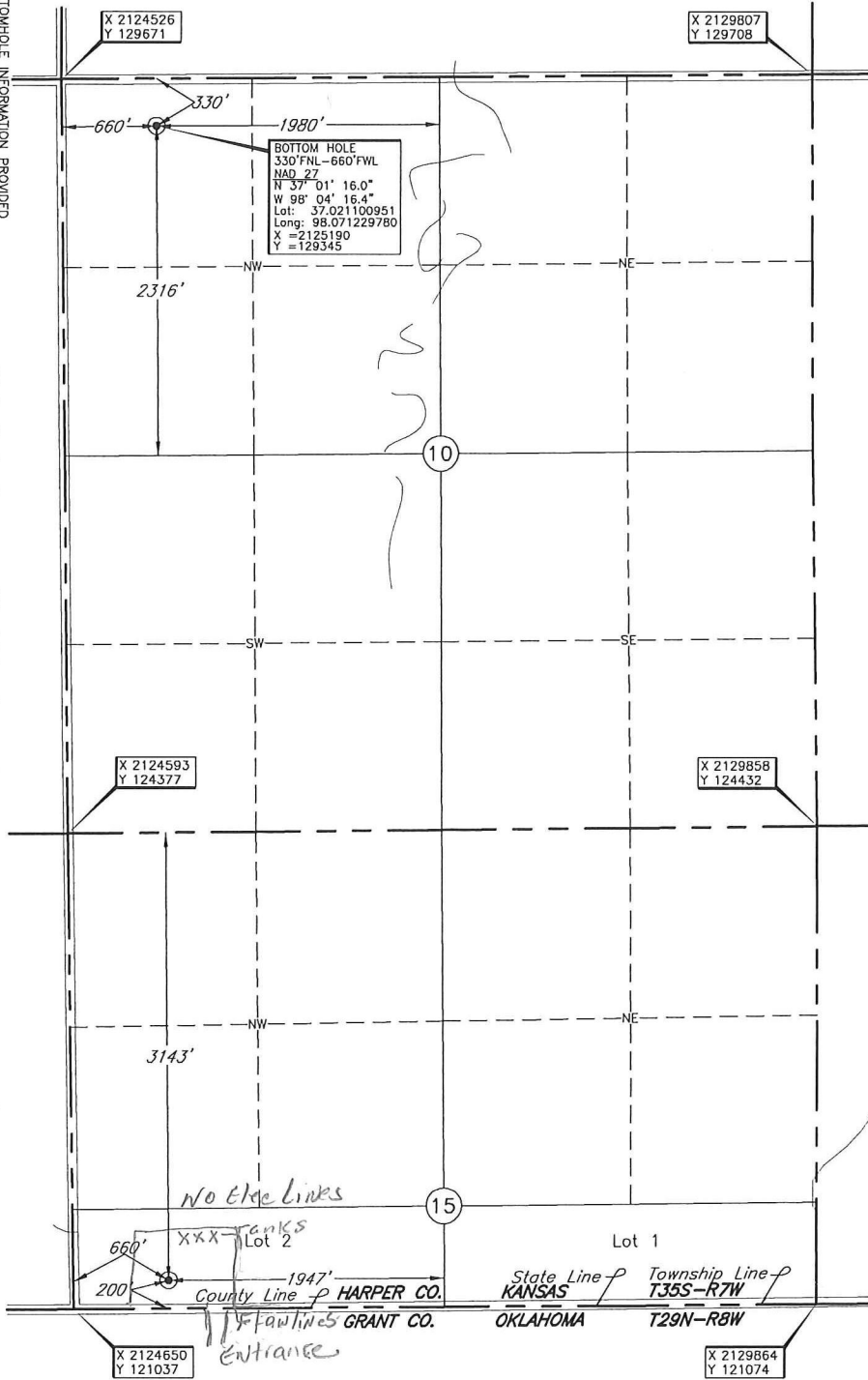
HARPER

County, Kansas

200' FSL-660' FWL- Section 15 Township 35S Range 7W P.M.



BOTTOMHOLE INFORMATION PROVIDED BY OPERATOR LISTED, NOT SURVEYED. BEARING AND/OR DISTANCE TO BOTTOMHOLE ARE CALCULATED FROM POINTS SURVEYED IN THE FIELD.



This location has been very carefully staked on the ground according to the best official survey records, maps, and photographs available to us, but its accuracy is not guaranteed. Review this plot and notify us immediately of any possible discrepancy.

Operator: SANDRIDGE ENERGY, INC.

Lease Name: WESLEY

Topography & Vegetation Loc. fell in terraced wheat field, ±705' Northeast to Southwest corner of house.

Good Drill Site?  Yes  No Reference Stakes or Alternate Location Stakes Set  None

Best Accessibility to Location From South of state line road.

Distance & Direction From Hwy Jct or Town From St Hwy 179 at Kansas-Oklahoma State Line, go ±1.5 mi. West on State Line to the Southwest corner of Sec. 15-T35S-R7W.

Distances shown in (parenthesis) are calculated based upon the Quarter Section being 2640 feet, those shown in [brackets] are based on G.D. (General Land Office) distances and have not been measured.

Well No.: 1-15H

ELEVATION: 1246 Gr. at Stake

Date of Drawing: Dec. 14, 2011

Invoice # 176837 Date Staked: Dec. 10, 2011

IS

**CERTIFICATE:**

I, T. Wayne Fisch, a Kansas Licensed Land Surveyor and an authorized agent of Topographic Land Surveyors, do hereby certify that the above described well location was surveyed and staked on the ground as shown herein.

Oklahoma Lic. No. 1213

DATUM: NAD-27  
 LAT: 36°59'55.8"N  
 LONG: 98°04'15.4"W  
 LAT: 36.998842893°N  
 LONG: 98.070956790°W  
 STATE PLANE  
 COORDINATES: (US Feet)  
 ZONE: KS SOUTH  
 X: 2125307  
 Y: 121241



This information was gathered with a GPS receiver with Sub-Meter accuracy.

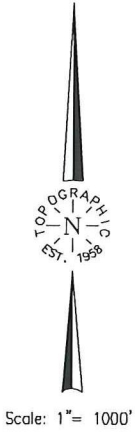
**TOPOGRAPHIC LAND SURVEYORS**

6709 NORTH CLASSEN BLVD., OKLA. CITY, OKLA. 73116 \* LOCAL (405) 843-4847 \* OUT OF STATE (800) 654-3219  
 Certificate of Authorization No. LS-99, Exp. Dec. 31, 2011

HARPER

County, Kansas

200'FSL-660'FWL- Section 15 Township 35S Range 7W P.M.



BOTTOMHOLE INFORMATION PROVIDED BY OPERATOR LISTED, NOT SURVEYED. BEARING AND/OR DISTANCE TO BOTTOMHOLE ARE CALCULATED FROM CORNER COORDINATES ARE TAKEN FROM POINTS SURVEYED IN THE FIELD.



This location has been very carefully staked on the ground according to the best official survey records, maps, and photographs available to us, but its accuracy is not guaranteed. Review this plot and notify us immediately of any possible discrepancy.

Operator: SANDRIDGE ENERGY, INC.  
 Lease Name: WESLEY

Topography & Vegetation Loc. fell in terraced wheat field, ±705' Northeast to Southwest corner of house.  
 Good Drill Site? Yes Reference Stakes or Alternate Location Stakes Set None  
 Best Accessibility to Location from South of state line road.  
 Distance & Direction from Hwy Jct or Town From St Hwy 179 at Kansas-Oklahoma State Line, go ±1.5 mi. West on State Line to the Southwest corner of Sec. 15-135S-7W.

Distances shown in (parenthesis) are calculated based upon the Quarter Section being 2640 feet; those shown in [brackets] are based on GLD (General Land Office) distances and have not been measured.

Well No.: 1-15H  
 ELEVATION: 1246 Gr. at Stake

Date of Drawing: Dec. 14, 2011

Invoice # 176837 Date Staked: Dec. 10, 2011

IS

**CERTIFICATE:**

I, T. Wayne Fisch a Kansas Licensed Land Surveyor and an authorized agent of Topographic Land Surveyors, do hereby certify that the above described well location was surveyed and staked on the ground as shown herein.

Oklahoma Lic. No. 1213

(This information was gathered with a GPS receiver with sub-meter accuracy.)  
 DATUM: NAD-27  
 LAT: 36°59'55.8"N  
 LONG: 98°04'15.4"W  
 LAT: 36.998842893°N  
 LONG: 98.070956790°W  
 STATE PLANE  
 COORDINATES: (US Feet)  
 ZONE: KS SOUTH  
 X: 2125307  
 Y: 121241



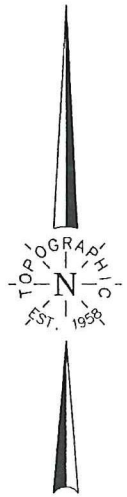
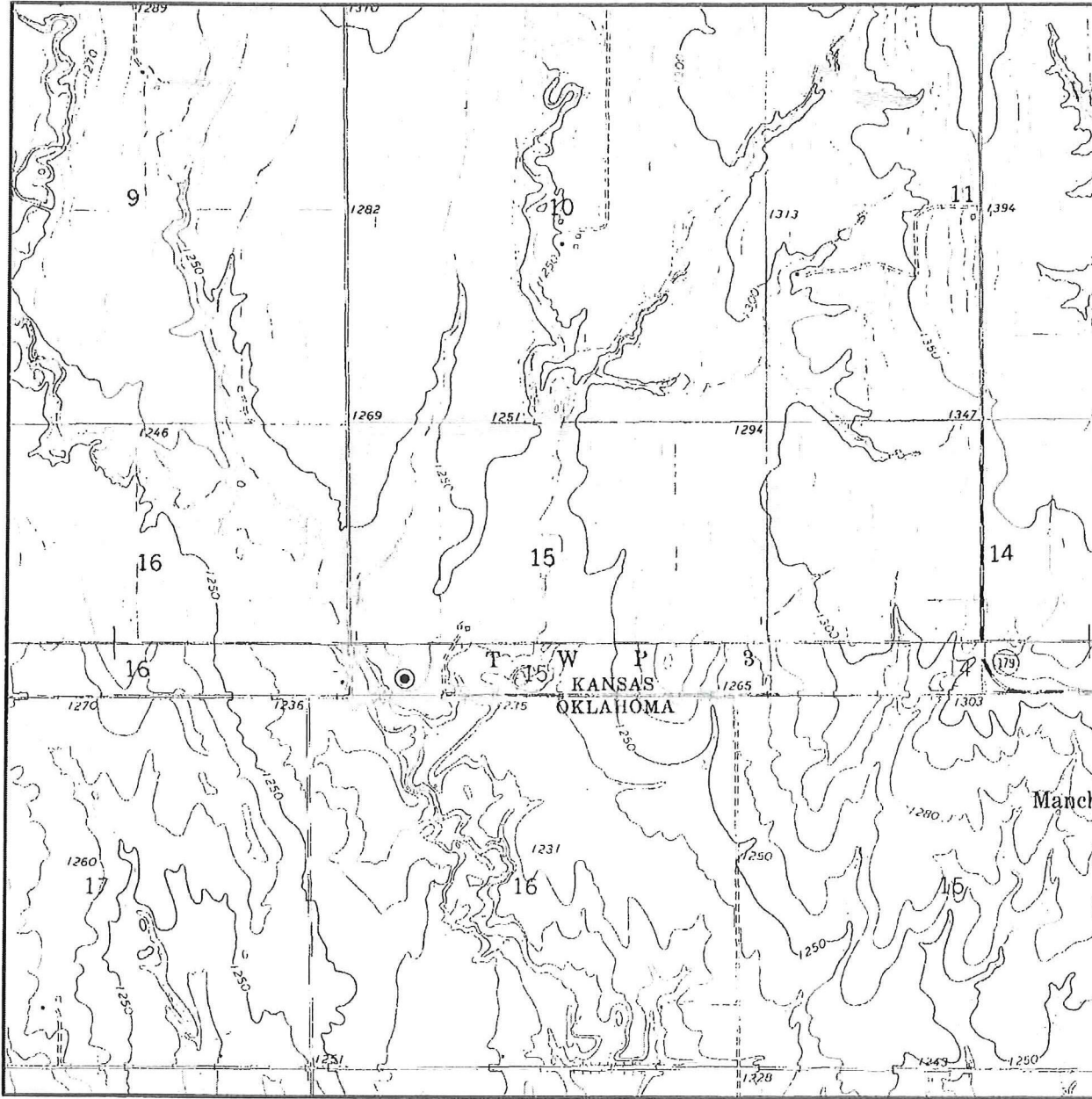
# TOPOGRAPHIC LAND SURVEYORS

Surveying and Mapping for the Energy Industry

6709 North Classen Blvd. Oklahoma City, OK 73116 www.topographic.com

Telephone Numbers: Local (405) 843-4847 Toll Free (800) 654-3219

## LOCATION & ELEVATION VERIFICATION MAP



Sec. 15 Twp. 35S Rng. 7W

County HARPER State KS

Operator SANDRIDGE ENERGY, INC.

Description 200'FSL-660'FWL

Lease WESLEY 1-15H

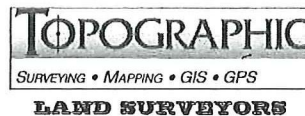
Elevation 1246' Gr. at Stake

U.S.G.S. Topographic  
Quadrangle Map SPRING, KS

Above Background Data from  
U.S.G.S. Topographic Map  
Scale: 1"=2000'

Contour Interval 10'

This location has been very carefully staked on the ground according to the best official survey records, maps and photographs available to us, but its accuracy is not guaranteed. When elevation is shown hereon it is the ground elevation of the location stake.  
Review this plat and inform us immediately of any possible discrepancy.

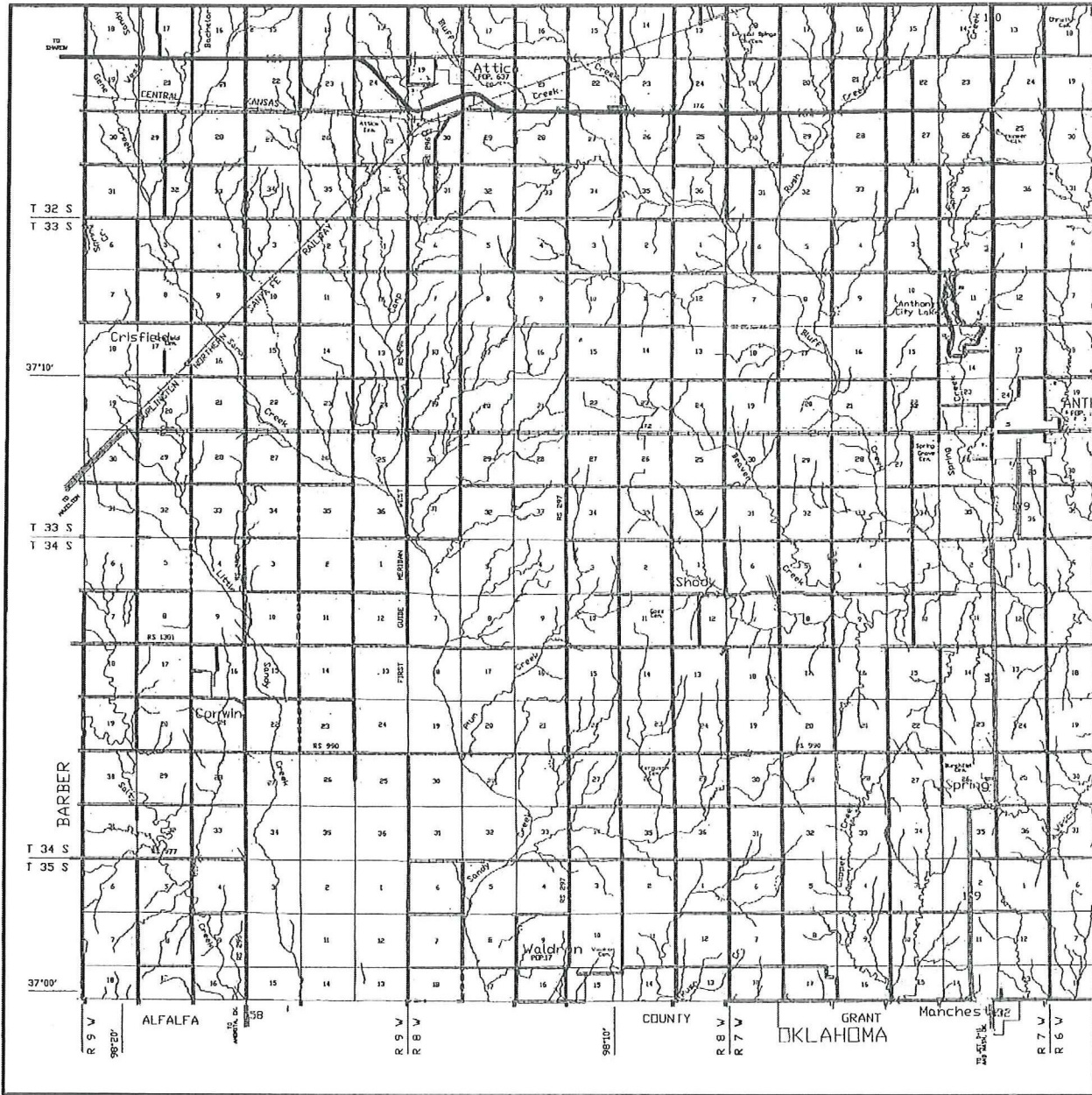


Dec. 10, 2011

# TOPOGRAPHIC LAND SURVEYORS

Surveying and Mapping for the Energy Industry  
 6709 North Classen Blvd. Oklahoma City, OK 73116 www.topographic.com  
 Telephone Numbers: Local (405) 843-4847 Toll Free (800) 654-3219

## VICINITY MAP

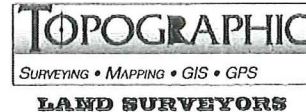


Scale: 1" = 3 Miles

Sec. 15 Twp. 35S Rng. 7W

County HARPER State KS

Operator SANDRIDGE ENERGY, INC.



# GEOLOGICAL PROGNOSIS

SandRidge Energy, Inc.  
 Kansas – Waldron  
 Tammy Alcorn - Geologist  
 Stacey Bryant - Landman

<b>Target Line</b>	
TVD @ 0' VS	4,850
INC	90.50

<b>Footages</b>	
FNL	-2,980
FSL	200

<b>Total VS</b>	<b>8,060.00</b>
EOC (MD)	5,272.54
EOC (TVD)	4,842.85
KOP	3,953.26
Traverse Length	7,241.39
TD (MD)	12,513.94
TVD @ TD	4,779.66
TVD displacement f/ EOC to TD	63.19

**Operator**  
 SandRidge Energy  
**Well Name and Number**  
 Wesley 1-15H  
**Well Surface Location**  
 15-35S-7W 200' FSL 660' FWL  
**Well Bottom Hole Location**  
 10-35S-7W 330' FNL 660' FWL  
**County and State**  
 Harper County, Kansas

