



Spud: 11/24/2011

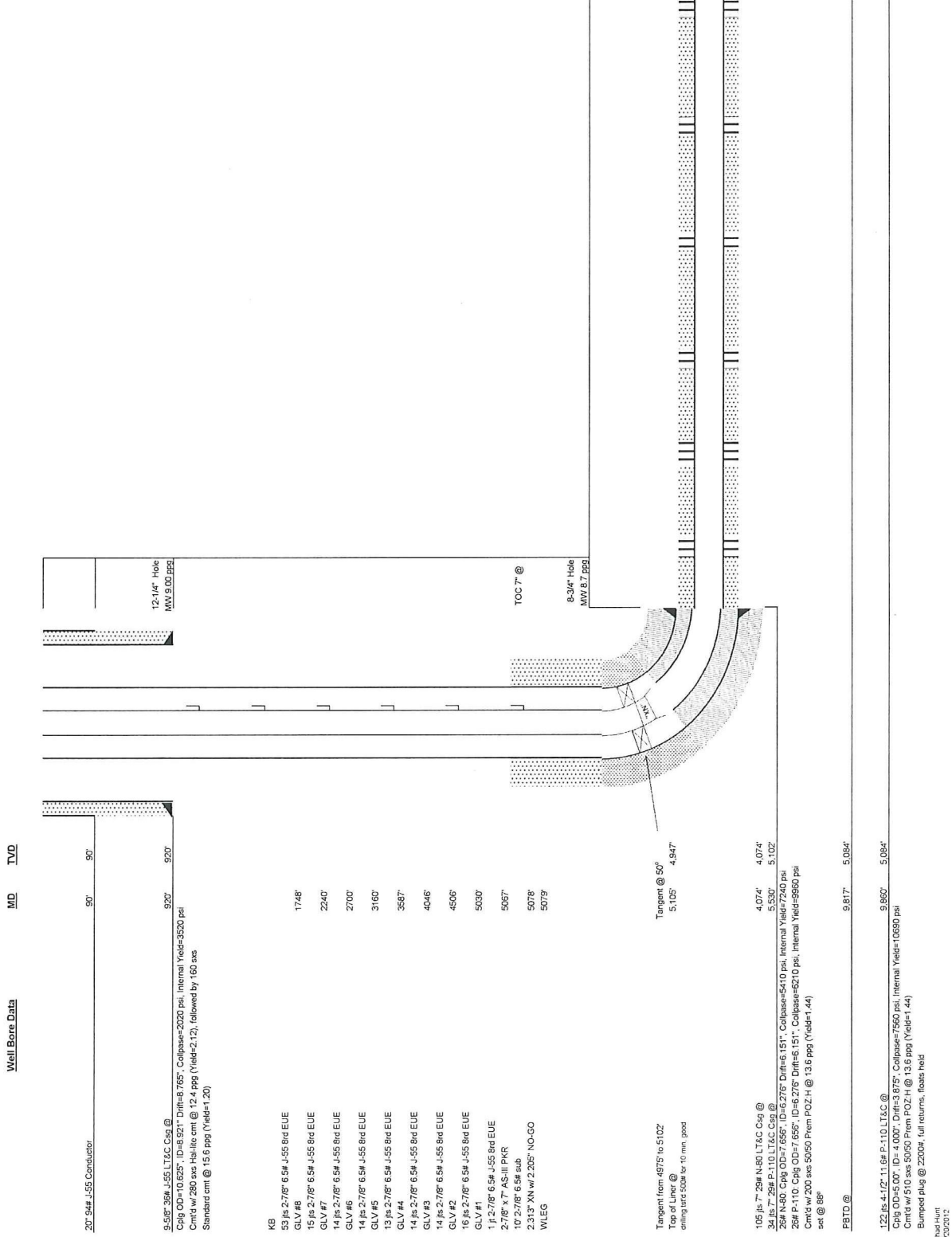
Current

Wellbore Schematic

Field: Kiowa Bow  
 County, Stage: Comanche County, KS  
 Well: Sean 1-18H  
 Location: SEC 18, TWP 31S, RGE 19W  
 Elevations: 2102' KB, 2083' GL

Original Completion (1/7/2012)	X
Current	
Proposed	

15-035-21606-01  
 API No.



Well Bore Data

MD	TVD
90'	90'
920'	920'
1748'	
2240'	
2700'	
3160'	
3587'	
4046'	
4506'	
5030'	
5067'	
5078'	
5079'	
5105'	4,947'
5,530'	4,074'
5,530'	5,102'
9,817'	5,084'
9,860'	5,084'

20" 94# J-55 Conductor  
 9.528" 35# J-55 LT&C Csg @  
 Cpg OD=10.625", ID=9.521" Drift=6.765", Collapses=2020 psi, Internal Yield=3520 psi  
 Cntd w/ 280 sac Heli-lite cmt @ 12.4 ppg (Yield=2.12), followed by 160 sac  
 Standard cmt @ 15.6 ppg (Yield=1.20)

KB  
 53 #s 2-7/8" 6.5# J-55 8rd EUE  
 GLV #8  
 15 #s 2-7/8" 6.5# J-55 8rd EUE  
 GLV #7  
 14 #s 2-7/8" 6.5# J-55 8rd EUE  
 GLV #6  
 14 #s 2-7/8" 6.5# J-55 8rd EUE  
 GLV #5  
 13 #s 2-7/8" 6.5# J-55 8rd EUE  
 GLV #4  
 14 #s 2-7/8" 6.5# J-55 8rd EUE  
 GLV #3  
 14 #s 2-7/8" 6.5# J-55 8rd EUE  
 GLV #2  
 16 #s 2-7/8" 6.5# J-55 8rd EUE  
 GLV #1  
 1 1/2" 7/8" 6.5# J-55 8rd EUE  
 2-7/8" X 7" AS-III PKR  
 10" 2-7/8" 6.5# sub  
 2.313" XN w/ 2.205" NO-GO  
 WLEG

Tangent from 4975' to 5102'  
 Top of Liner @  
 casing starts 5008' to 10 min. good

105 #s 7" 29# N-80 LT&C Csg @  
 34 #s 7" 29# P-110 LT&C Csg @  
 28# N-80 Cpg OD=7.656", ID=6.276" Drift=6.151", Collapses=5410 psi, Internal Yield=7240 psi  
 28# P-110 Cpg OD=7.656", ID=6.276" Drift=6.151", Collapses=6210 psi, Internal Yield=9960 psi  
 Cntd w/ 200 sac 50/50 Prem POZ-H @ 13.6 ppg (Yield=1.44)  
 set @ 88'

PETD @  
 122 #s 4-1/2" 11.6# P-110 LT&C @  
 Cpg OD=5.007", ID=4.0007" Drift=3.875", Collapses=7560 psi, Internal Yield=10690 psi  
 Cntd w/ 510 sac 50/50 Prem POZ-H @ 13.6 ppg (Yield=1.44)  
 Bumped Plug @ 2200', full returns. floats held  
 Chd Hunt  
 3/20/2012

6-1/8" Hole  
 MW clear water

TD: 9860' MD / 5084' TVD

12-1/4" Hole  
 MW 9.00 ppg

TOC 7' @  
 8-3/4" Hole  
 MW 8.7 ppg

Tangent @ 50'  
 5,105'

4,074'  
 5,530'

9,817'  
 5,084'

9,860'  
 5,084'