



TRILOBITE TESTING, INC.

DRILL STEM TEST REPORT

White Exploration Inc.
 2400 N.Woodlaw n ,Ste.115
 Wichita Ks.67220
 ATTN: David Goldak

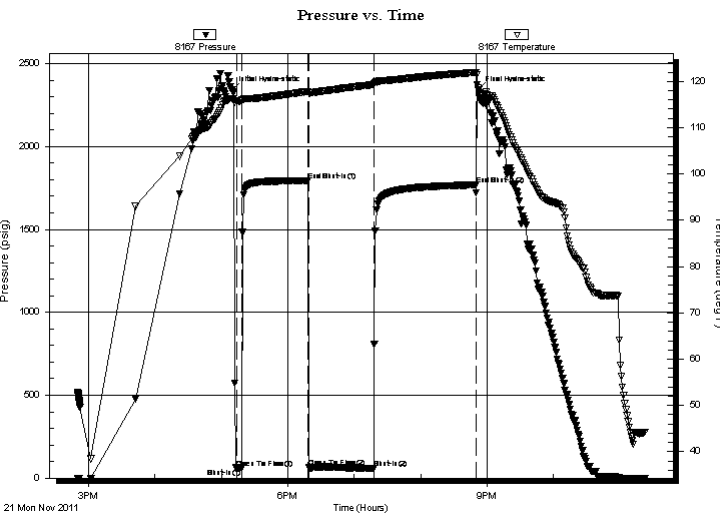
27-32s-12w Barber Ks
Ash #2
 Job Ticket: 44078 **DST#: 1**
 Test Start: 2011.11.21 @ 14:50:21

GENERAL INFORMATION:

Formation: **Viola**
 Deviated: No Whipstock: ft (KB)
 Test Type: Conventional Bottom Hole (Initial)
 Time Tool Opened: 17:13:36 Tester: Gary Pevoteaux
 Time Test Ended: 23:22:21 Unit No: 56
 Interval: **4726.00 ft (KB) To 4761.00 ft (KB) (TVD)** Reference Elevations: 1613.00 ft (KB)
 Total Depth: 4761.00 ft (KB) (TVD) 1603.00 ft (CF)
 Hole Diameter: 7.88 inches Hole Condition: Fair KB to GR/CF: 10.00 ft

Serial #: 8167 Inside
 Press @ Run Depth: 60.34 psig @ 4727.00 ft (KB) Capacity: 8000.00 psig
 Start Date: 2011.11.21 End Date: 2011.11.21 Last Calib.: 2011.11.21
 Start Time: 14:50:22 End Time: 23:22:21 Time On Btm: 2011.11.21 @ 17:09:21
 Time Off Btm: 2011.11.21 @ 20:52:06

TEST COMMENT: IF: Strong blow . GTS in 3 1/2 mins.
 IS: No blow .
 FF: Strong blow . (see gas flow report)
 FS: Show of OCM @ blow line after bleeding off blow . No blow . back . ?



PRESSURE SUMMARY

| Time (Min.) | Pressure (psig) | Temp (deg F) | Annotation |
|-------------|-----------------|--------------|----------------------|
| 0 | 2340.34 | 116.33 | Initial Hydro-static |
| 5 | 61.17 | 115.84 | Open To Flow (1) |
| 9 | 60.45 | 115.74 | Shut-In(1) |
| 69 | 1793.51 | 117.83 | End Shut-In(1) |
| 70 | 64.02 | 117.49 | Open To Flow (2) |
| 129 | 60.34 | 119.31 | Shut-In(2) |
| 221 | 1769.33 | 121.94 | End Shut-In(2) |
| 223 | 2340.87 | 118.56 | Final Hydro-static |

Recovery

| Length (ft) | Description | Volume (bbl) |
|-------------|--------------------|--------------|
| 122.00 | GMCO 8%g 44%m 48%o | 0.60 |
| | | |
| | | |
| | | |
| | | |

Gas Rates

| | Choke (inches) | Pressure (psig) | Gas Rate (Mcf/d) |
|----------------|----------------|-----------------|------------------|
| First Gas Rate | 0.50 | 23.00 | 252.29 |
| Last Gas Rate | 0.50 | 19.00 | 225.31 |
| Max. Gas Rate | 0.50 | 26.00 | 272.53 |



**TRILOBITE
TESTING, INC.**

DRILL STEM TEST REPORT

FLUID SUMMARY

White Exploration Inc.

27-32s-12w Barber Ks

2400 N.Woodlaw n ,Ste.115
Wichita Ks.67220

Ash #2

Job Ticket: 44078

DST#: 1

ATTN: David Goldak

Test Start: 2011.11.21 @ 14:50:21

Mud and Cushion Information

Mud Type: Gel Chem

Cushion Type:

Oil API:

deg API

Mud Weight: 9.00 lb/gal

Cushion Length:

ft

Water Salinity:

7000 ppm

Viscosity: 47.00 sec/qt

Cushion Volume:

bbbl

Water Loss: 9.58 in³

Gas Cushion Type:

Resistivity: 0.00 ohm.m

Gas Cushion Pressure:

psig

Salinity: 7000.00 ppm

Filter Cake: 0.20 inches

Recovery Information

Recovery Table

| Length ft | Description | Volume bbbl |
|--------------|--------------------|----------------|
| 122.00 | GMCO 8%g 44%m 48%o | 0.600 |

Total Length: 122.00 ft

Total Volume: 0.600 bbl

Num Fluid Samples: 0

Num Gas Bombs: 1

Serial #: gp-1

Laboratory Name:

Laboratory Location:

Recovery Comments:

