



**TRILOBITE
TESTING, INC.**

DRILL STEM TEST REPORT

Red Oak Energy, Inc.

S35-14s-41w Wallace, KS

POB 783140
Wichita, KS 67207

Prairie Wind 1-35

Job Ticket: 45491

DST#: 1

ATTN: Sean Deenihan

Test Start: 2011.12.07 @ 15:34:00

GENERAL INFORMATION:

Formation: **Morrow SD**

Deviated: No Whipstock: ft (KB)

Time Tool Opened: 21:45:00

Time Test Ended: 05:40:40

Test Type: Conventional Bottom Hole (Initial)

Tester: Chuck Smith

Unit No: 37

Interval: 4955.00 ft (KB) To 4020.00 ft (KB) (TVD)

Reference Elevations: 3791.00 ft (KB)

Total Depth: 5020.00 ft (KB) (TVD)

3778.00 ft (CF)

Hole Diameter: 7.88 inches Hole Condition: Good

KB to GR/CF: 13.00 ft

Serial #: 8018

Inside

Press @ Run Depth: 869.34 psig @ 4959.00 ft (KB)

Capacity: 8000.00 psig

Start Date: 2011.12.07

End Date: 2011.12.08

Last Calib.: 2011.12.08

Start Time: 15:34:02

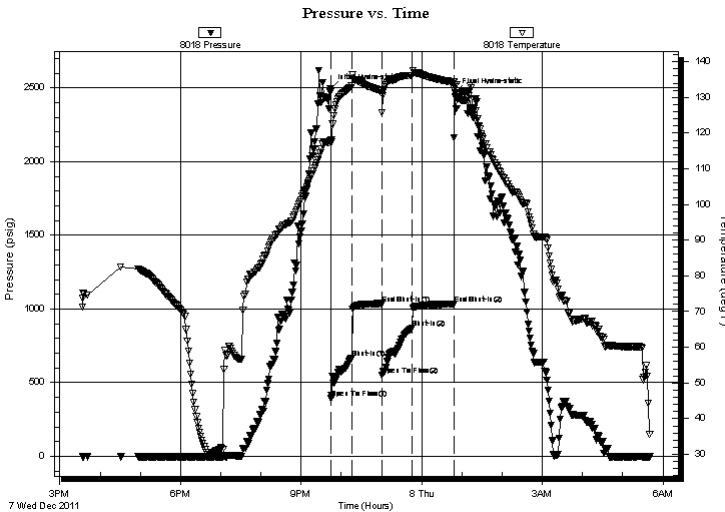
End Time: 05:40:40

Time On Btm: 2011.12.07 @ 21:44:00

Time Off Btm: 2011.12.08 @ 00:49:30

TEST COMMENT: B.O.B. @ 1 min. GTS @ 12 min., fluid /spray @ 16 min.
Blow did not bleed off below 8".
B.O.B. immediate, measured gas, fluid /spray @ 6 min.
Blow receded to 4" blow only.

PRESSURE SUMMARY



Time (Min.)	Pressure (psig)	Temp (deg F)	Annotation
0	2494.14	117.81	Initial Hydro-static
1	396.75	117.45	Open To Flow (1)
32	666.03	133.15	Shut-In(1)
77	1036.92	131.94	End Shut-In(1)
77	550.99	125.81	Open To Flow (2)
122	869.34	136.13	Shut-In(2)
184	1033.13	134.29	End Shut-In(2)
186	2468.43	132.85	Final Hydro-static

Recovery

Length (ft)	Description	Volume (bbl)
92.00	GMCO 10g 10m 80o	0.45
184.00	GO 10g 90o	0.90
497.00	GO 35g 75o	4.44
0.00	4160 Feet GIP	0.00

Gas Rates

	Choke (inches)	Pressure (psig)	Gas Rate (Mcf/d)
First Gas Rate	0.25	15.00	46.64



**TRILOBITE
TESTING, INC.**

DRILL STEM TEST REPORT

FLUID SUMMARY

Red Oak Energy, Inc.

S35-14s-41w Wallace, KS

POB 783140
Wichita, KS 67207

Prairie Wind 1-35

Job Ticket: 45491

DST#: 1

ATTN: Sean Deenihan

Test Start: 2011.12.07 @ 15:34:00

Mud and Cushion Information

Mud Type: Gel Chem

Cushion Type:

Oil API:

39 deg API

Mud Weight: 9.00 lb/gal

Cushion Length:

ft

Water Salinity:

ppm

Viscosity: 53.00 sec/qt

Cushion Volume:

bbbl

Water Loss: 7.99 in³

Gas Cushion Type:

Resistivity: 0.00 ohm.m

Gas Cushion Pressure:

psig

Salinity: 2200.00 ppm

Filter Cake: 1.00 inches

Recovery Information

Recovery Table

Length ft	Description	Volume bbbl
92.00	GMCO 10g 10m 80o	0.452
184.00	GO 10g 90o	0.905
497.00	GO 35g 75o	4.439
0.00	4160 Feet GIP	0.000

Total Length: 773.00 ft

Total Volume: 5.796 bbl

Num Fluid Samples: 0

Num Gas Bombs: 0

Serial #:

Laboratory Name:

Laboratory Location:

Recovery Comments: API:36 @ 30 Degrees F = 39.

Serial #: 8018

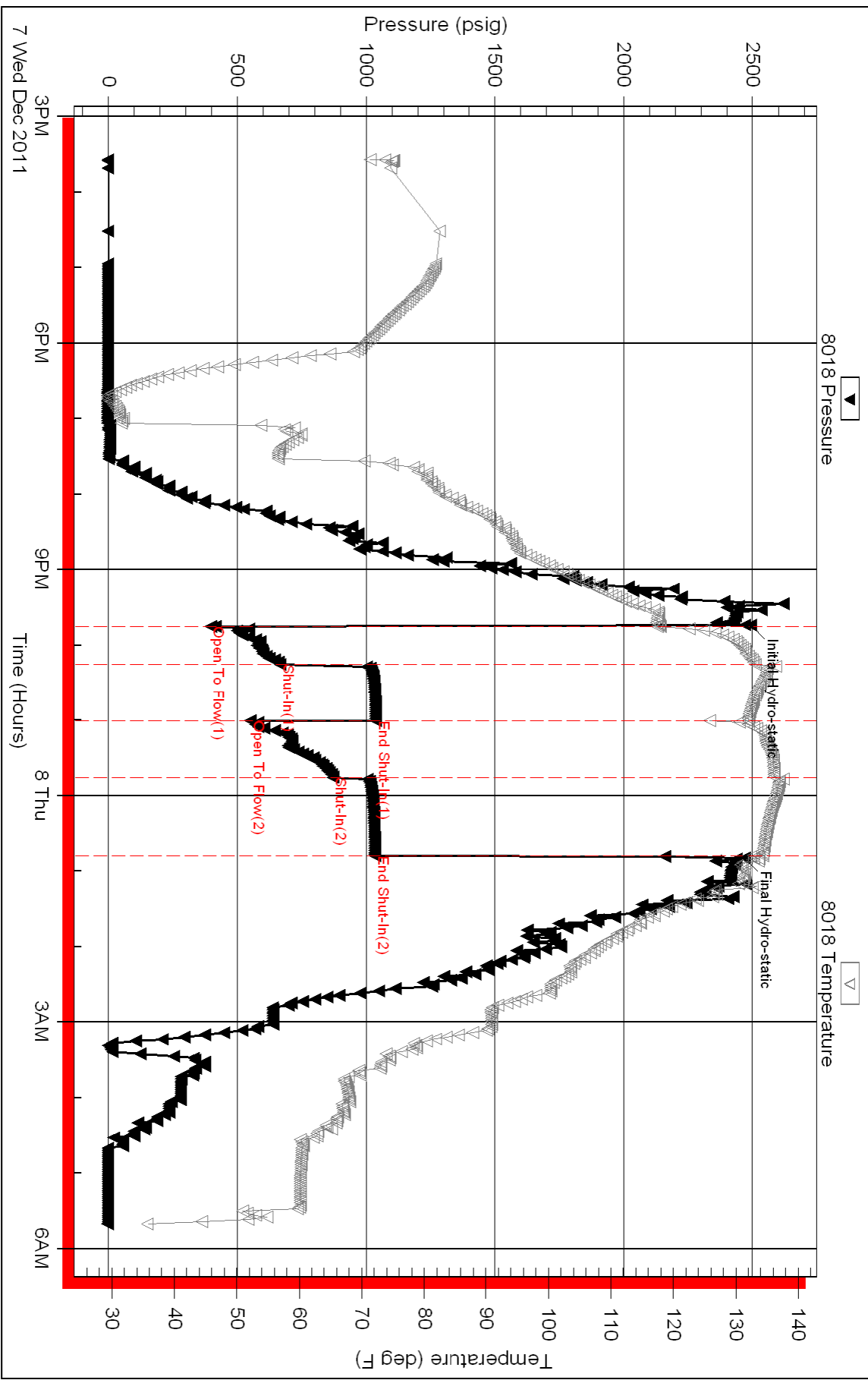
Inside

Red Oak Energy, Inc.

Prairie Wind 1-35

DST Test Number: 1

Pressure vs. Time



Triobite Testing, Inc

Ref. No: 45491

Printed: 2011.12.08 @ 08:41:04