

1071742

Operator Name: _____ Lease Name: _____ Well #: _____

Sec. _____ Twp. _____ S. R. _____ East West County: _____

INSTRUCTIONS: Show important tops of formations penetrated. Detail all cores. Report all final copies of drill stems tests giving interval tested, time tool open and closed, flowing and shut-in pressures, whether shut-in pressure reached static level, hydrostatic pressures, bottom hole temperature, fluid recovery, and flow rates if gas to surface test, along with final chart(s). Attach extra sheet if more space is needed.

Final Radioactivity Log, Final Logs run to obtain Geophysical Data and Final Electric Logs must be emailed to kcc-well-logs@kcc.ks.gov. Digital electronic log files must be submitted in LAS version 2.0 or newer AND an image file (TIFF or PDF).

Drill Stem Tests Taken <i>(Attach Additional Sheets)</i>	<input type="checkbox"/> Yes <input type="checkbox"/> No	<input type="checkbox"/> Log	Formation (Top), Depth and Datum	<input type="checkbox"/> Sample
Samples Sent to Geological Survey	<input type="checkbox"/> Yes <input type="checkbox"/> No	Name	Top	Datum
Cores Taken	<input type="checkbox"/> Yes <input type="checkbox"/> No			
Electric Log Run	<input type="checkbox"/> Yes <input type="checkbox"/> No			
List All E. Logs Run:				

CASING RECORD <input type="checkbox"/> New <input type="checkbox"/> Used							
Report all strings set-conductor, surface, intermediate, production, etc.							
Purpose of String	Size Hole Drilled	Size Casing Set (In O.D.)	Weight Lbs. / Ft.	Setting Depth	Type of Cement	# Sacks Used	Type and Percent Additives

ADDITIONAL CEMENTING / SQUEEZE RECORD				
Purpose:	Depth Top Bottom	Type of Cement	# Sacks Used	Type and Percent Additives
<input type="checkbox"/> Perforate				
<input type="checkbox"/> Protect Casing				
<input type="checkbox"/> Plug Back TD				
<input type="checkbox"/> Plug Off Zone				

Did you perform a hydraulic fracturing treatment on this well? Yes No *(If No, skip questions 2 and 3)*

Does the volume of the total base fluid of the hydraulic fracturing treatment exceed 350,000 gallons? Yes No *(If No, skip question 3)*

Was the hydraulic fracturing treatment information submitted to the chemical disclosure registry? Yes No *(If No, fill out Page Three of the ACO-1)*

Shots Per Foot	PERFORATION RECORD - Bridge Plugs Set/Type Specify Footage of Each Interval Perforated	Acid, Fracture, Shot, Cement Squeeze Record <i>(Amount and Kind of Material Used)</i>	Depth

TUBING RECORD: Size: _____ Set At: _____ Packer At: _____ Liner Run: Yes No

Date of First, Resumed Production, SWD or ENHR: _____ Producing Method:
 Flowing Pumping Gas Lift Other *(Explain)* _____

Estimated Production Per 24 Hours	Oil Bbls.	Gas Mcf	Water Bbls.	Gas-Oil Ratio	Gravity

DISPOSITION OF GAS: <input type="checkbox"/> Vented <input type="checkbox"/> Sold <input type="checkbox"/> Used on Lease <i>(If vented, Submit ACO-18.)</i>	METHOD OF COMPLETION: <input type="checkbox"/> Open Hole <input type="checkbox"/> Perf. <input type="checkbox"/> Dually Comp. <input type="checkbox"/> Commingled <i>(Submit ACO-5)</i> <i>(Submit ACO-4)</i> <input type="checkbox"/> Other <i>(Specify)</i> _____	PRODUCTION INTERVAL: _____ _____
--	---	---

Form	ACO1 - Well Completion
Operator	Russell Oil, Inc.
Well Name	Steinle 2-32
Doc ID	1071742

All Electric Logs Run

COMPUTER PROCESSED INTERPRETATION
MICRORESISTIVITY
DUAL INDUCTION
DUAL COMPENSATED POROSITY
SECTOR BOND LOG

Form	ACO1 - Well Completion
Operator	Russell Oil, Inc.
Well Name	Steinle 2-32
Doc ID	1071742

Tops

Name	Top	Datum
ANHYDRITE	930	+1001
BASE ANHYDRITE	960	+971
GRANDHAVEN	2506	-575
TARKIO	2576	-645
HOWARD	2774	-843
TOPEKA	2848	-917
HEEBNER	3077	-1146
TORONTO	3094	-1163
LANSING	3137	-1206
MUNCIE CREEK	3278	-1347
B/KC	3378	-1447
ARBUCKLE	3382	-1451



**TRILOBITE
TESTING, INC.**

DRILL STEM TEST REPORT

Russell Oil
PO Box 8050
Edmond, Ok 73083
ATTN: Kitt Noah

Steinle #2-32
32-15-14 Russell, Ks
Job Ticket: 45159 **DST#: 1**
Test Start: 2011.10.09 @ 01:15:18

GENERAL INFORMATION:

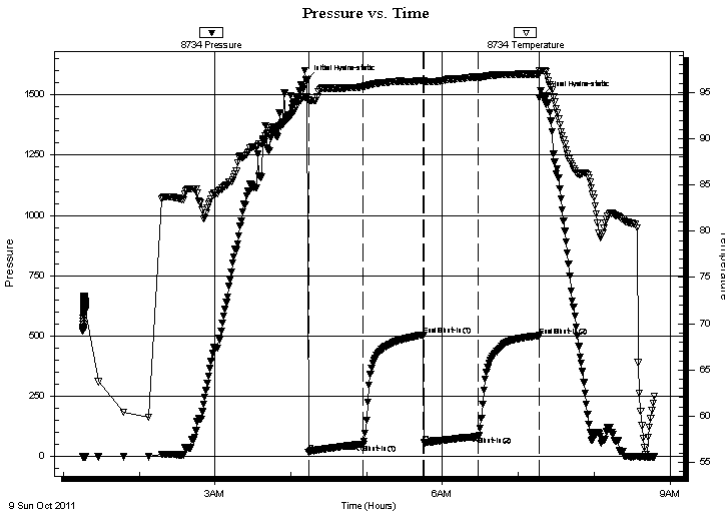
Formation: **LKC "A-D"**
Deviated: No Whipstock: ft (KB)
Time Tool Opened: 04:13:48
Time Test Ended: 08:47:48
Interval: **3144.00 ft (KB) To 3188.00 ft (KB) (TVD)**
Total Depth: 3188.00 ft (KB) (TVD)
Hole Diameter: 7.88 inches Hole Condition: Good
Test Type: Conventional Bottom Hole (Initial)
Tester: Brian Fairbank
Unit No: 41
Reference Elevations: 1931.00 ft (KB)
1924.00 ft (CF)
KB to GR/CF: 7.00 ft

Serial #: 8734 Outside

Press @ Run Depth: 83.37 psig @ 3148.00 ft (KB) Capacity: 8000.00 psig
Start Date: 2011.10.09 End Date: 2011.10.09 Last Calib.: 2011.10.09
Start Time: 01:15:19 End Time: 08:47:48 Time On Btm: 2011.10.09 @ 04:12:18
Time Off Btm: 2011.10.09 @ 07:18:48

TEST COMMENT: IFP - BOB 14 min
ISI - 1 1/4" blow back- died 27 min
FFP - BOB 21 min
FSI - 2" blow back

PRESSURE SUMMARY



Time (Min.)	Pressure (psig)	Temp (deg F)	Annotation
0	1563.35	94.51	Initial Hydro-static
2	18.30	94.18	Open To Flow (1)
45	51.70	95.64	Shut-In(1)
93	504.83	96.32	End Shut-In(1)
93	57.10	96.17	Open To Flow (2)
136	83.37	96.66	Shut-In(2)
184	501.16	97.01	End Shut-In(2)
187	1497.60	97.39	Final Hydro-static

Recovery

Length (ft)	Description	Volume (bbl)
110.00	MW 80%W, 20%M	1.54
60.00	GW & OCM 10%G, 30%O, 10%W, 50%M	0.84
0.00	295' GIP	0.00

Gas Rates

	Choke (inches)	Pressure (psig)	Gas Rate (Mcf/d)



**TRILOBITE
TESTING, INC.**

DRILL STEM TEST REPORT

FLUID SUMMARY

Russell Oil
PO Box 8050
Edmond, Ok 73083
ATTN: Kitt Noah

Steinle #2-32
32-15-14 Russell, Ks
Job Ticket: 45159 **DST#: 1**
Test Start: 2011.10.09 @ 01:15:18

Mud and Cushion Information

Mud Type: Gel Chem	Cushion Type:	Oil API:	deg API
Mud Weight: 9.00 lb/gal	Cushion Length: ft	Water Salinity:	60000 ppm
Viscosity: 47.00 sec/qt	Cushion Volume: bbl		
Water Loss: 5.19 in ³	Gas Cushion Type:		
Resistivity: ohm.m	Gas Cushion Pressure: psig		
Salinity: 4800.00 ppm			
Filter Cake: inches			

Recovery Information

Recovery Table

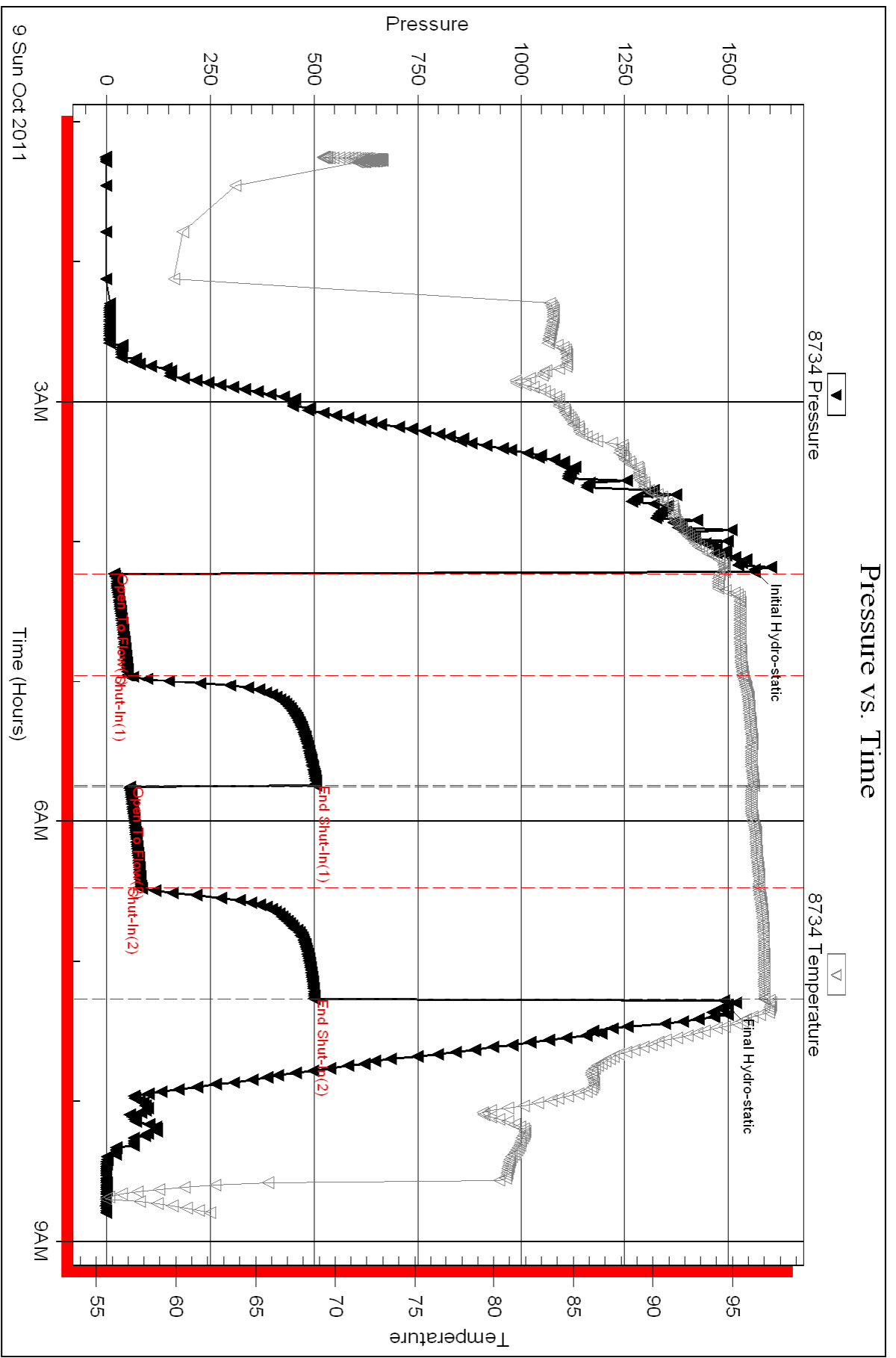
Length ft	Description	Volume bbl
110.00	MW 80%W, 20%M	1.543
60.00	GW & OCM 10%G, 30%O, 10%W, 50%M	0.842
0.00	295' GIP	0.000

Total Length: 170.00 ft Total Volume: 2.385 bbl

Num Fluid Samples: 0 Num Gas Bombs: 0 Serial #:

Laboratory Name: Laboratory Location:

Recovery Comments:





TRILOBITE TESTING, INC.

DRILL STEM TEST REPORT

Russell Oil
 PO Box 8050
 Edmond, Ok 73083
 ATTN: Kitt Noah

Steinle #2-32
32-15-14 Russell, Ks
 Job Ticket: 45160 **DST#: 2**
 Test Start: 2011.10.09 @ 17:24:33

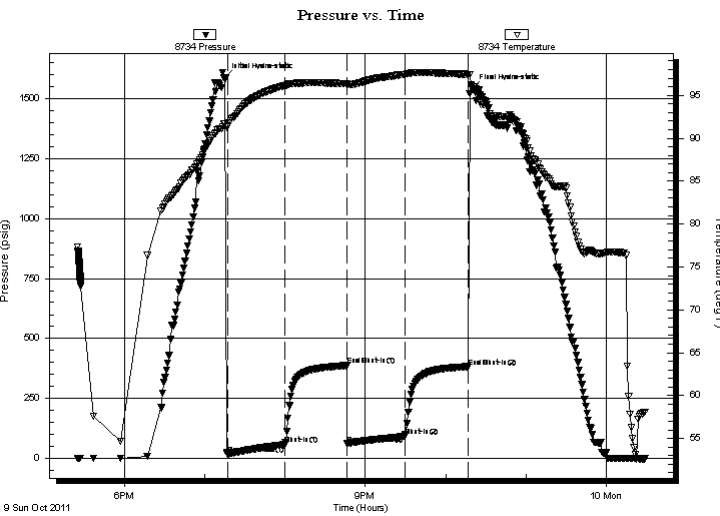
GENERAL INFORMATION:

Formation: **LKC "E-F"**
 Deviated: No Whipstock: ft (KB)
 Time Tool Opened: 19:16:33
 Time Test Ended: 00:29:03
Interval: 3202.00 ft (KB) To 3235.00 ft (KB) (TVD)
 Total Depth: 3235.00 ft (KB) (TVD)
 Hole Diameter: 7.88 inches Hole Condition: Good
 Test Type: Conventional Bottom Hole (Reset)
 Tester: Brian Fairbank
 Unit No: 41
 Reference Elevations: 1931.00 ft (KB)
 1924.00 ft (CF)
 KB to GR/CF: 7.00 ft

Serial #: 8734 Outside

Press @ Run Depth: 91.49 psig @ 3207.00 ft (KB) Capacity: 8000.00 psig
 Start Date: 2011.10.09 End Date: 2011.10.10 Last Calib.: 2011.10.10
 Start Time: 17:24:34 End Time: 00:29:03 Time On Btm: 2011.10.09 @ 19:14:33
 Time Off Btm: 2011.10.09 @ 22:20:03

TEST COMMENT: IFP - BOB 4 min
 ISI - 1/4" blow back - died 32 min
 FFP - BOB 11 min
 FSI - 2" blow back - died 33 min



PRESSURE SUMMARY

Time (Min.)	Pressure (psig)	Temp (deg F)	Annotation
0	1587.96	91.70	Initial Hydro-static
2	17.62	91.36	Open To Flow (1)
45	56.73	96.14	Shut-In(1)
92	387.14	96.40	End Shut-In(1)
92	60.03	96.28	Open To Flow (2)
135	91.49	97.45	Shut-In(2)
183	380.53	97.45	End Shut-In(2)
186	1542.97	96.03	Final Hydro-static

Recovery

Length (ft)	Description	Volume (bbl)
5.00	MUD 100%	0.07
120.00	GMM 5%G, 80%W, 15%M	1.68
45.00	GO & WCM 20%G, 15%O, 15%W, 50%M	0.63
0.00	605' GIP	0.00

* Recovery from multiple tests

Gas Rates

Choke (inches)	Pressure (psig)	Gas Rate (Mcf/d)



**TRILOBITE
TESTING, INC.**

DRILL STEM TEST REPORT

FLUID SUMMARY

Russell Oil
PO Box 8050
Edmond, Ok 73083
ATTN: Kitt Noah

Steinle #2-32
32-15-14 Russell, Ks
Job Ticket: 45160 **DST#: 2**
Test Start: 2011.10.09 @ 17:24:33

Mud and Cushion Information

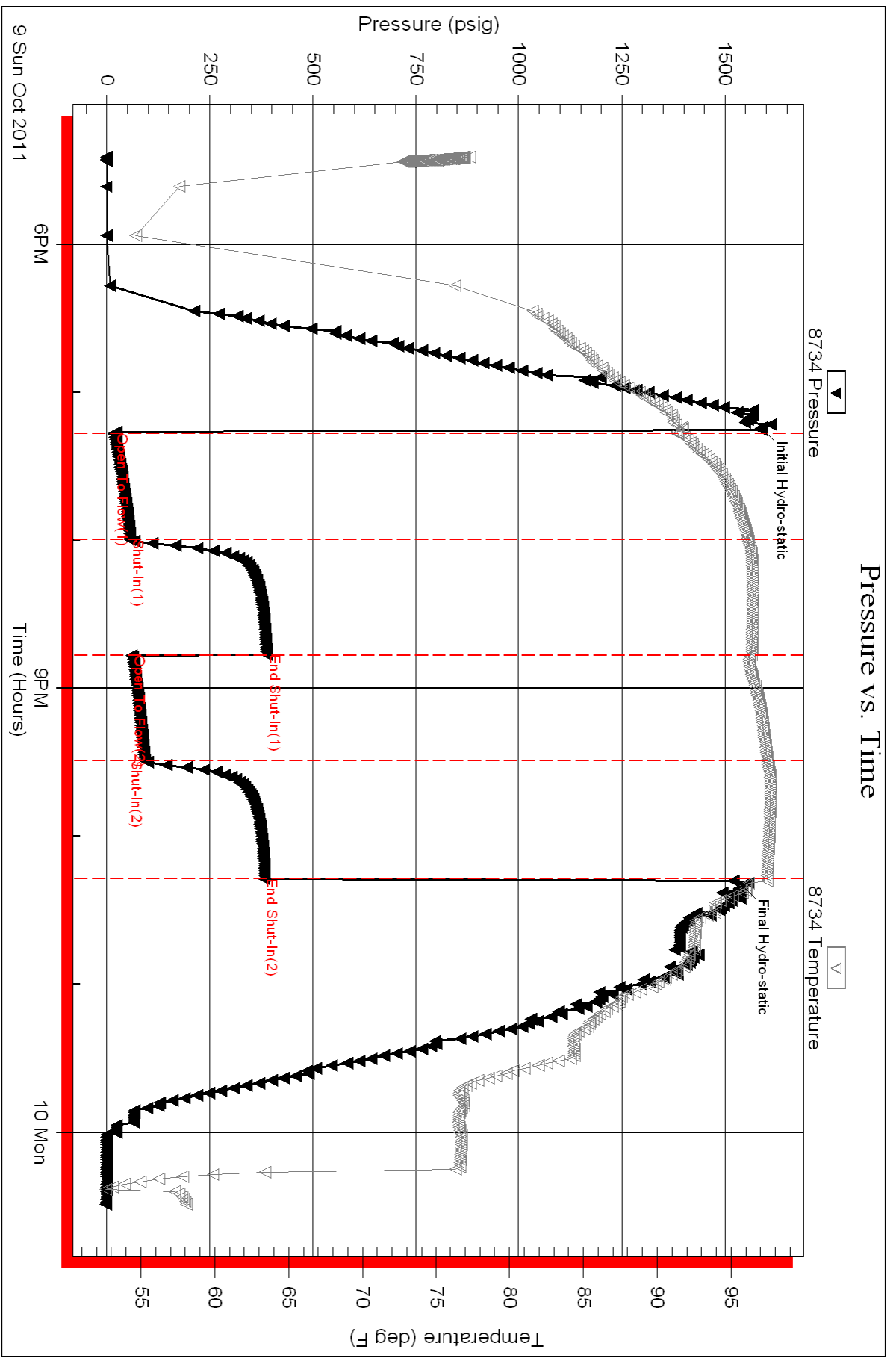
Mud Type: Gel Chem	Cushion Type:	Oil API:	deg API
Mud Weight: 9.00 lb/gal	Cushion Length: ft	Water Salinity:	70000 ppm
Viscosity: 48.00 sec/qt	Cushion Volume: bbl		
Water Loss: 5.40 in ³	Gas Cushion Type:		
Resistivity: ohm.m	Gas Cushion Pressure: psig		
Salinity: 4900.00 ppm			
Filter Cake: inches			

Recovery Information

Recovery Table

Length ft	Description	Volume bbl
5.00	MUD 100%	0.070
120.00	GMW 5%G, 80%W, 15%M	1.683
45.00	GO & WCM 20%G, 15%O, 15%W, 50%M	0.631
0.00	605' GIP	0.000

Total Length: 170.00 ft Total Volume: 2.384 bbl
Num Fluid Samples: 0 Num Gas Bombs: 0 Serial #:
Laboratory Name: Laboratory Location:
Recovery Comments:





TRILOBITE TESTING, INC.

DRILL STEM TEST REPORT

Russell Oil
 PO Box 8050
 Edmond, Ok 73083
 ATTN: Kitt Noah

Steinle #2-32
32-15-14 Russell, Ks
 Job Ticket: 45161 **DST#: 3**
 Test Start: 2011.10.10 @ 14:36:29

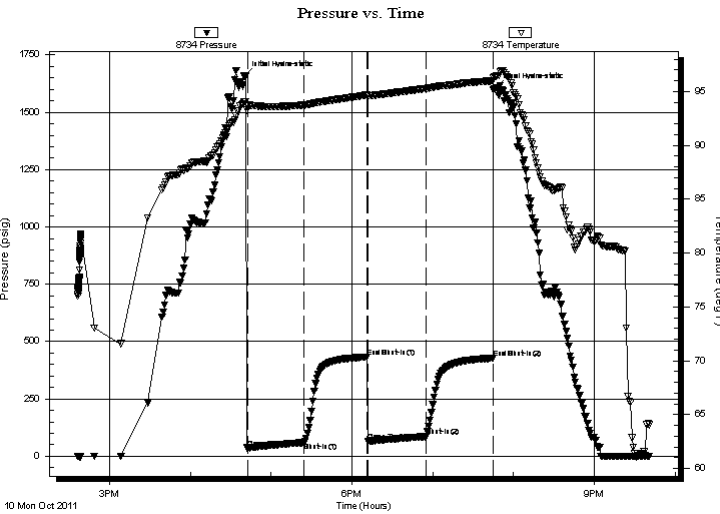
GENERAL INFORMATION:

Formation: **LKC "H-J"**
 Deviated: No Whipstock: ft (KB)
 Time Tool Opened: 16:42:29
 Time Test Ended: 21:40:59
Interval: 3280.00 ft (KB) To 3340.00 ft (KB) (TVD)
 Total Depth: 3340.00 ft (KB) (TVD)
 Hole Diameter: 7.88 inches Hole Condition: Good
 Test Type: Conventional Bottom Hole (Reset)
 Tester: Brian Fairbank
 Unit No: 41
 Reference Elevations: 1931.00 ft (KB)
 1924.00 ft (CF)
 KB to GR/CF: 7.00 ft

Serial #: 8734 Outside

Press @ Run Depth: 84.85 psig @ 3285.00 ft (KB) Capacity: 8000.00 psig
 Start Date: 2011.10.10 End Date: 2011.10.10 Last Calib.: 2011.10.10
 Start Time: 14:36:30 End Time: 21:40:59 Time On Btm: 2011.10.10 @ 16:40:29
 Time Off Btm: 2011.10.10 @ 19:46:59

TEST COMMENT: IFP - BOB 14 min
 ISI - 1/4" blow back - died 11 min
 FFP - BOB 8 min
 FSI - 1" blow back - died 22 min



PRESSURE SUMMARY

Time (Min.)	Pressure (psig)	Temp (deg F)	Annotation
0	1658.92	94.04	Initial Hydro-static
2	34.73	93.75	Open To Flow (1)
44	59.34	93.74	Shut-In(1)
91	432.05	94.67	End Shut-In(1)
92	65.85	94.59	Open To Flow (2)
135	84.85	95.27	Shut-In(2)
184	427.56	95.99	End Shut-In(2)
187	1609.42	96.41	Final Hydro-static

Recovery

Length (ft)	Description	Volume (bbl)
14.00	MW 80%W, 20%M	0.20
110.00	GW & OCM 50%G, 20%O, 10%W, 20%M	1.54
10.00	GHOCM 10%G, 35%O, 55%M	0.14
1.00	FREE OIL TSTM	0.01

* Recovery from multiple tests

Gas Rates

	Choke (inches)	Pressure (psig)	Gas Rate (Mcf/d)



**TRILOBITE
TESTING, INC.**

DRILL STEM TEST REPORT

FLUID SUMMARY

Russell Oil
PO Box 8050
Edmond, Ok 73083
ATTN: Kitt Noah

Steinle #2-32
32-15-14 Russell, Ks
Job Ticket: 45161 **DST#: 3**
Test Start: 2011.10.10 @ 14:36:29

Mud and Cushion Information

Mud Type: Gel Chem	Cushion Type:	Oil API:	deg API
Mud Weight: 9.00 lb/gal	Cushion Length: ft	Water Salinity:	50000 ppm
Viscosity: 54.00 sec/qt	Cushion Volume: bbl		
Water Loss: 5.40 in ³	Gas Cushion Type:		
Resistivity: ohm.m	Gas Cushion Pressure: psig		
Salinity: 4900.00 ppm			
Filter Cake: inches			

Recovery Information

Recovery Table

Length ft	Description	Volume bbl
14.00	MW 80%W, 20%M	0.196
110.00	GW & OCM 50%G, 20%O, 10%W, 20%M	1.543
10.00	GHOCM 10%G, 35%O, 55%M	0.140
1.00	FREE OIL TSTM	0.014

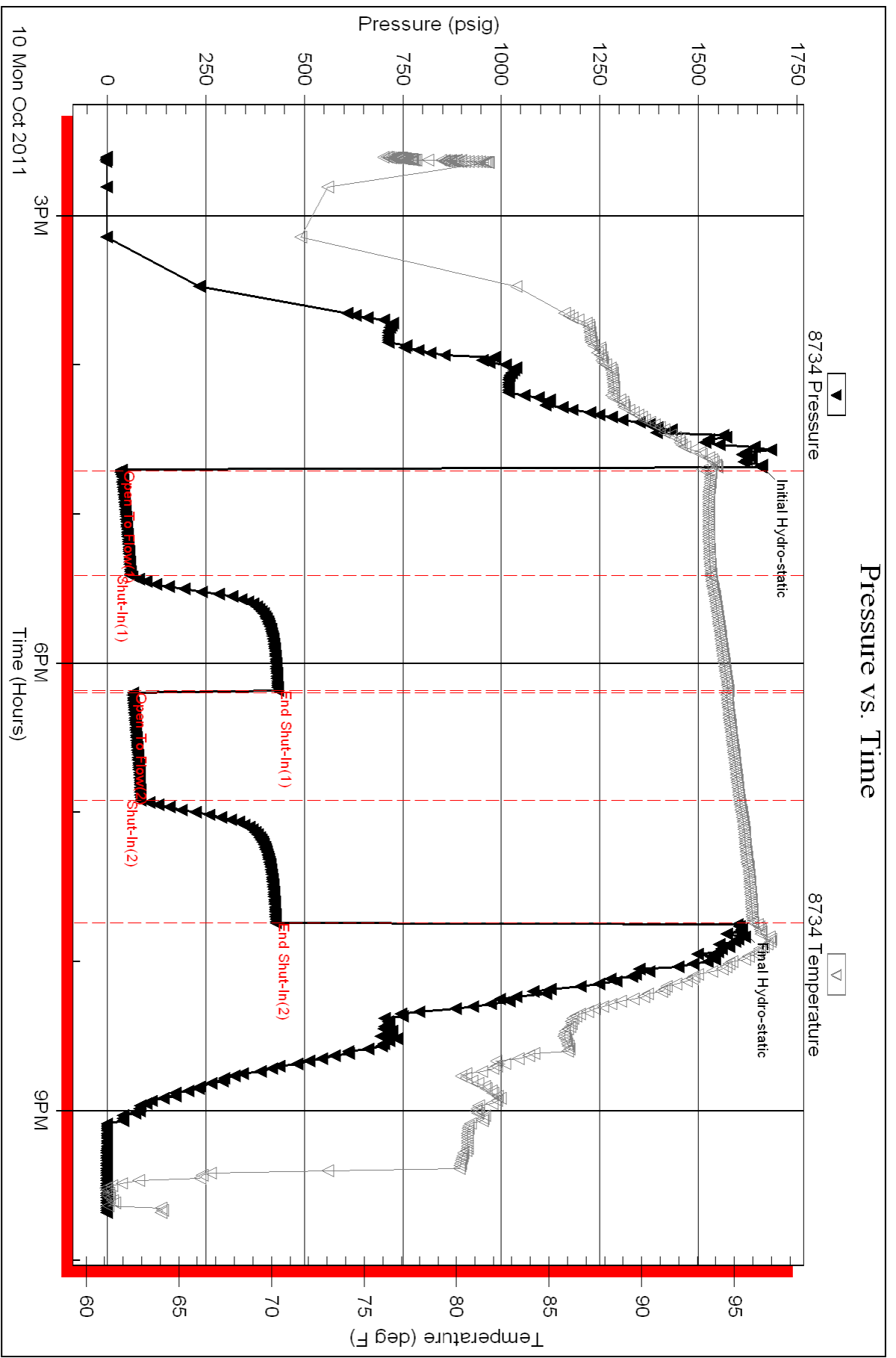
Total Length: 135.00 ft Total Volume: 1.893 bbl
Num Fluid Samples: 0 Num Gas Bombs: 0 Serial #:
Laboratory Name: Laboratory Location:
Recovery Comments:

Serial #: 8734

Outside Russell Oil

32-15-14 Russell, Ks

DST Test Number: 3





**TRILOBITE
TESTING, INC.**

DRILL STEM TEST REPORT

Russell Oil
PO Box 8050
Edmond, Ok 73083
ATTN: Kitt Noah

32-15-14 Russell, Ks
Steinle 2-32
Job Ticket: 45162 **DST#: 4**
Test Start: 2011.10.11 @ 09:17:28

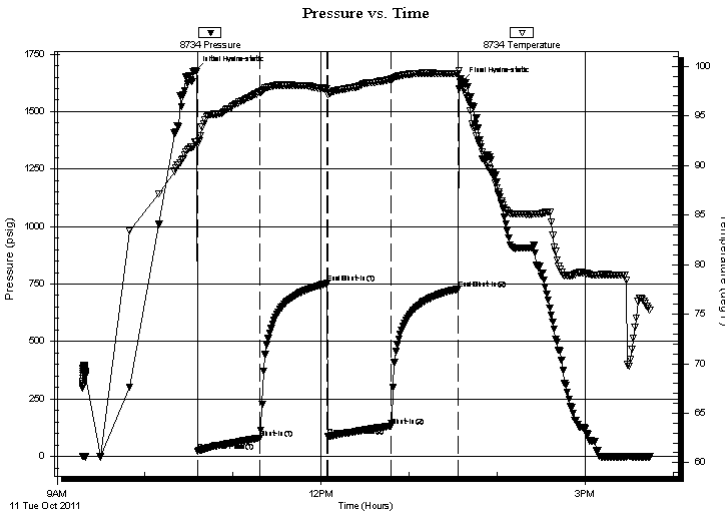
GENERAL INFORMATION:

Formation: **Arbuckle**
Deviated: No Whipstock: ft (KB)
Time Tool Opened: 10:35:58
Time Test Ended: 15:43:58
Interval: **3365.00 ft (KB) To 3394.00 ft (KB) (TVD)**
Total Depth: 3394.00 ft (KB) (TVD)
Hole Diameter: 7.88 inches Hole Condition: Good
Test Type: Conventional Bottom Hole (Reset)
Tester: Brian Fairbank
Unit No: 41
Reference Elevations: 1931.00 ft (KB)
1924.00 ft (CF)
KB to GR/CF: 7.00 ft

Serial #: 8734 Outside
Press @ Run Depth: 131.89 psig @ 3371.00 ft (KB) Capacity: 8000.00 psig
Start Date: 2011.10.11 End Date: 2011.10.11 Last Calib.: 2011.10.11
Start Time: 09:17:29 End Time: 15:43:58 Time On Btm: 2011.10.11 @ 10:34:28
Time Off Btm: 2011.10.11 @ 13:35:58

TEST COMMENT: IFP - BOB 15 min
ISI - 1/4" blow back - died 12 min
FFP - BOB 17 min
FSI - sur blow back - died 12 min

PRESSURE SUMMARY



Time (Min.)	Pressure (psig)	Temp (deg F)	Annotation
0	1678.39	92.36	Initial Hydro-static
2	23.04	92.08	Open To Flow (1)
44	79.07	97.40	Shut-In(1)
90	752.18	97.74	End Shut-In(1)
91	85.82	97.16	Open To Flow (2)
133	131.89	98.69	Shut-In(2)
179	728.83	99.25	End Shut-In(2)
182	1629.71	98.21	Final Hydro-static

Recovery

Length (ft)	Description	Volume (bbl)
60.00	GW & OCM 10%G, 20%O, 10%W, 60%M	0.84
45.00	GWHOCM 20%G, 25%O, 10%W, 45%M	0.63
200.00	FREE OIL 95%O, 5%M	2.81

* Recovery from multiple tests

Gas Rates

	Choke (inches)	Pressure (psig)	Gas Rate (Mcf/d)



**TRILOBITE
TESTING, INC.**

DRILL STEM TEST REPORT

FLUID SUMMARY

Russell Oil
PO Box 8050
Edmond, Ok 73083
ATTN: Kitt Noah

32-15-14 Russell, Ks
Steinle 2-32
Job Ticket: 45162 **DST#: 4**
Test Start: 2011.10.11 @ 09:17:28

Mud and Cushion Information

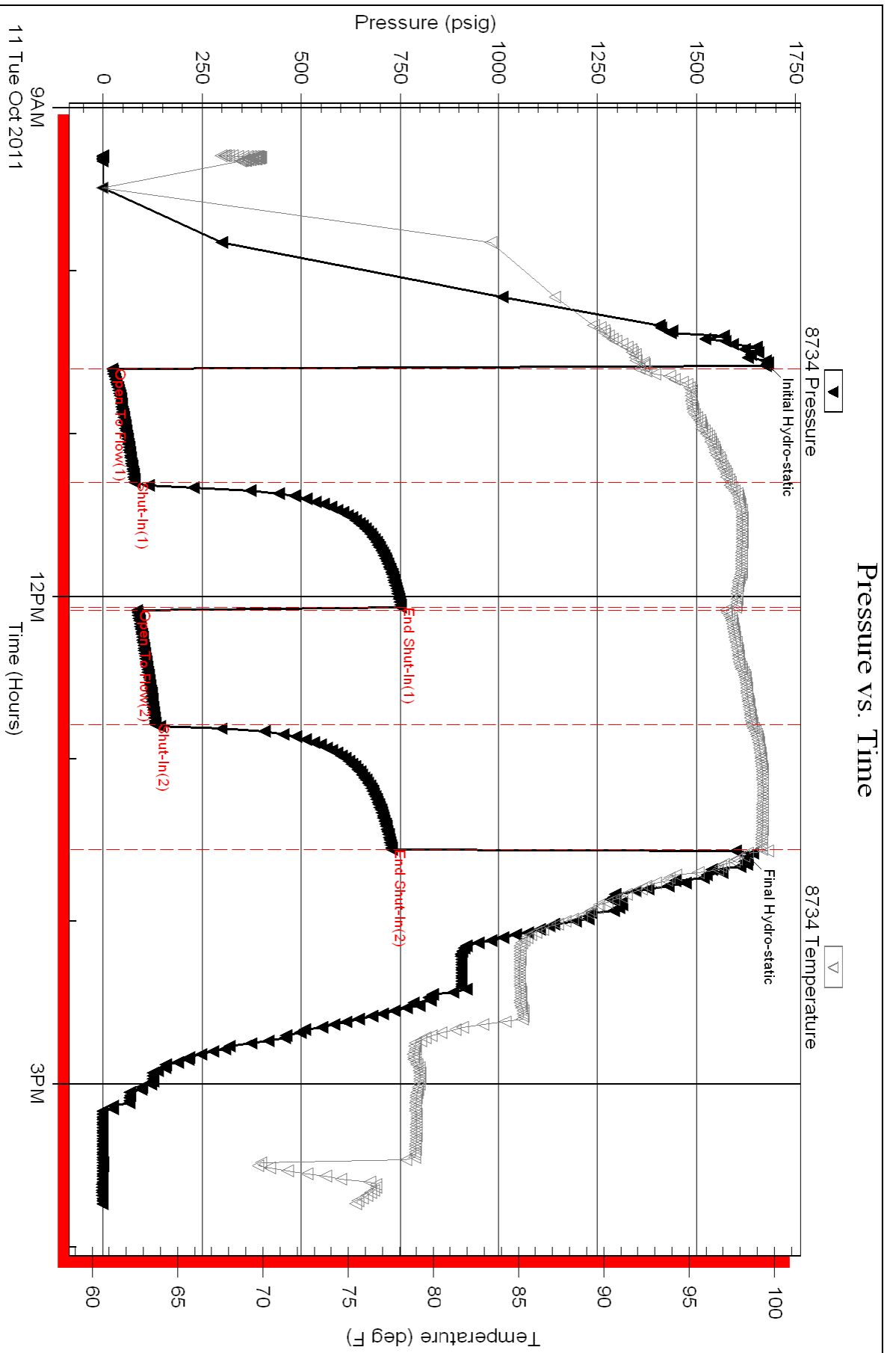
Mud Type: Gel Chem	Cushion Type:	Oil API: 35 deg API
Mud Weight: 9.00 lb/gal	Cushion Length: ft	Water Salinity: 30000 ppm
Viscosity: 51.00 sec/qt	Cushion Volume: bbl	
Water Loss: 5.19 in ³	Gas Cushion Type:	
Resistivity: ohm.m	Gas Cushion Pressure: psig	
Salinity: 5000.00 ppm		
Filter Cake: inches		

Recovery Information

Recovery Table

Length ft	Description	Volume bbl
60.00	GW & OCM 10%G, 20%O, 10%W, 60%M	0.842
45.00	GWHOCM 20%G, 25%O, 10%W, 45%M	0.631
200.00	FREE OIL 95%O, 5%M	2.805

Total Length: 305.00 ft Total Volume: 4.278 bbl
Num Fluid Samples: 0 Num Gas Bombs: 0 Serial #:
Laboratory Name: Laboratory Location:
Recovery Comments:





TRILOBITE TESTING, INC.

DRILL STEM TEST REPORT

Russell Oil
 PO Box 8050
 Edmond, Ok 73083
 ATTN: Kitt Noah

32-15-14 Russell, Ks
Steinle 2-32
 Job Ticket: 45163 **DST#: 5**
 Test Start: 2011.10.11 @ 23:50:59

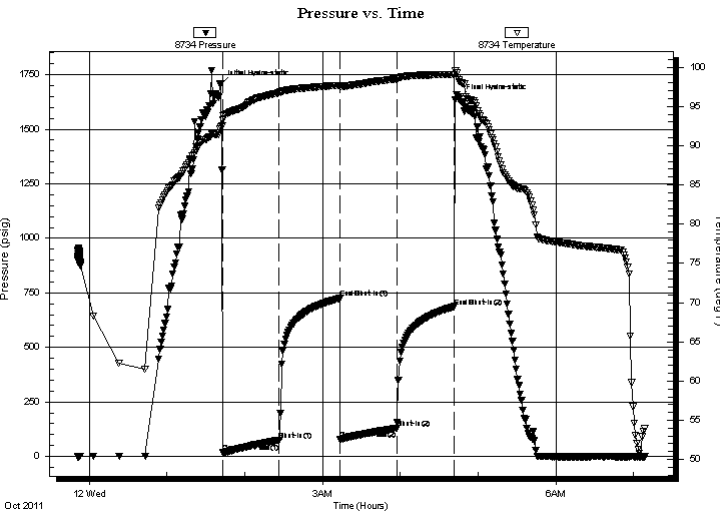
GENERAL INFORMATION:

Formation: **Arbuckle (2)**
 Deviated: No Whipstock: ft (KB)
 Time Tool Opened: 01:42:59
 Time Test Ended: 07:08:59
 Interval: **3399.00 ft (KB) To 3406.00 ft (KB) (TVD)**
 Total Depth: 3406.00 ft (KB) (TVD)
 Hole Diameter: 7.88 inches Hole Condition: Good
 Test Type: Conventional Bottom Hole (Reset)
 Tester: Brian Fairbank
 Unit No: 41
 Reference Elevations: 1931.00 ft (KB)
 1924.00 ft (CF)
 KB to GR/CF: 7.00 ft

Serial #: 8734 Outside

Press @ Run Depth: 128.53 psig @ 3400.00 ft (KB) Capacity: 8000.00 psig
 Start Date: 2011.10.11 End Date: 2011.10.12 Last Calib.: 2011.10.12
 Start Time: 23:51:00 End Time: 07:08:59 Time On Btm: 2011.10.12 @ 01:40:59
 Time Off Btm: 2011.10.12 @ 04:44:59

TEST COMMENT: IFP - BOB 11 min
 ISI - 1/4" blow back - died 19 min
 FFP - BOB 21 min
 FSI - sur blow back - died 14 min



PRESSURE SUMMARY

Time (Min.)	Pressure (psig)	Temp (deg F)	Annotation
0	1704.54	92.18	Initial Hydro-static
2	16.97	93.26	Open To Flow (1)
46	74.31	96.73	Shut-In(1)
92	724.20	97.70	End Shut-In(1)
93	78.32	97.53	Open To Flow (2)
136	128.53	98.52	Shut-In(2)
181	686.91	99.07	End Shut-In(2)
184	1640.56	98.36	Final Hydro-static

Recovery

Length (ft)	Description	Volume (bbl)
40.00	SOCM 5%O, 95%M	0.56
275.00	FREE OIL 95%O, 5%M	3.86

* Recovery from multiple tests

Gas Rates

Choke (inches)	Pressure (psig)	Gas Rate (Mcf/d)



**TRILOBITE
TESTING, INC.**

DRILL STEM TEST REPORT

FLUID SUMMARY

Russell Oil
PO Box 8050
Edmond, Ok 73083
ATTN: Kitt Noah

32-15-14 Russell, Ks
Steinle 2-32
Job Ticket: 45163 **DST#: 5**
Test Start: 2011.10.11 @ 23:50:59

Mud and Cushion Information

Mud Type: Gel Chem	Cushion Type:	Oil API: 34 deg API
Mud Weight: 9.00 lb/gal	Cushion Length: ft	Water Salinity: ppm
Viscosity: 51.00 sec/qt	Cushion Volume: bbl	
Water Loss: 5.18 in ³	Gas Cushion Type:	
Resistivity: ohm.m	Gas Cushion Pressure: psig	
Salinity: 5000.00 ppm		
Filter Cake: inches		

Recovery Information

Recovery Table

Length ft	Description	Volume bbl
40.00	SOCM 5%O, 95%M	0.561
275.00	FREE OIL 95%O, 5%M	3.858

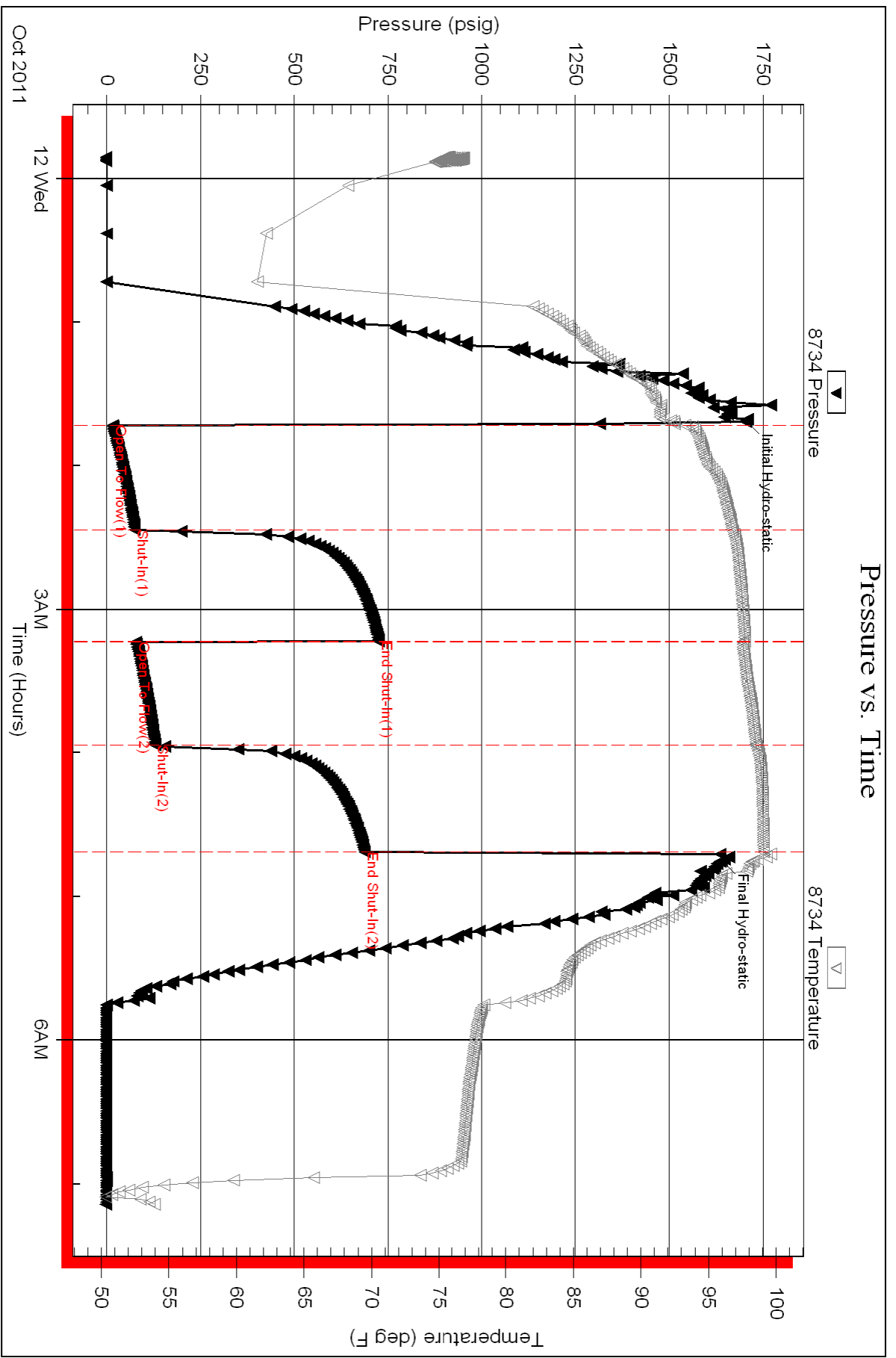
Total Length: 315.00 ft Total Volume: 4.419 bbl
Num Fluid Samples: 0 Num Gas Bombs: 0 Serial #:
Laboratory Name: Laboratory Location:
Recovery Comments:

Serial #: 8734

Outside Russell Oil

Steinle 2-32

DST Test Number: 5



Date	10/27/11	Sec.		Twp.		Range		County	Russell	State	KS	On Location		Finish	5:00 PM
------	----------	------	--	------	--	-------	--	--------	---------	-------	----	-------------	--	--------	---------

Well No. A#2 Location Milberger, 1E, Stw into

Tractor Express Well Service Owner

Job Squeeze To Quality Oilwell Cementing, Inc.
 You are hereby requested to rent cementing equipment and furnish
 cementer and helper to assist owner or contractor to do work as listed.

Size 5 1/2" Depth Charge To Russell Oil

Size 2 5/8" Depth Street

Depth City State

Percent Left in Csg. Shoe Joint The above was done to satisfaction and supervision of owner agent or contractor.

Displace Cement Amount Ordered 200sx Com 2% CC

EQUIPMENT

9	No.	Cementer	Paul	Common	95
3	No.	Driver	Matt	Poz. Mix	
PV	No.	Driver	Brain	Gel.	

JOB SERVICES & REMARKS

Remarks:	Calcium 3
Hole	Hulls
Case Hole	Salt
Centralizers	Flowseal
Plugs	Kol-Seal
Port Collar	Mud CLR 48
Plug at 5290'	CFL-117 or CD110 CAF 38
270' Test Tools 1500#	Sand 2 80#
270' - Spot 2 Sand	Handling 200 205
Perfs 3203' - 06'	Mileage
3213' - 15'	
3225' - 28'	

FLOAT EQUIPMENT

Mix 95 sx Squeeze to 1500#	Guide Shoe
Wash down to 3140'	Centralizer
Thank You!!	Baskets
	AFU Inserts
	Float Shoe
	Latch Down

Pumptrk Charge Squeeze
 Mileage 13

Signature	Todd Brown	Tax	
		Discount	
		Total Charge	

All charges arising out of or in connection with this report shall be paid by BES, unless otherwise specified.



TREATMENT REPORT

Customer RUSSELL OIL INC.		Lease No.		Date	
Lease STEINLE		Well # 2-32 TD 7		10-13-2011	
Field Order # 04869	Station PRATT, KS.	Casing 5 1/2"	Depth 34100'	County RUSSELL	State KS.
Type Job CNW-5 1/2" L.S.			Formation	Legal Description 32-15-14	

PIPE DATA		PERFORATING DATA		FLUID USED		TREATMENT RESUME		
Casing Size 5 1/2 x 15.5	Tubing Size	Shots/Ft	CMT-	Acid	25SK SCAVENGER	RATE	PRESS	ISIP
Depth 3459'	Depth	From	To	Pre Pad	@ 1.26 CUFT³	Max	MIXED CMT. w/ CITY H₂O	5 Min.
Volume 82.32 BBL	Volume	From	To	Pad	CMT- 125SK AA-2	Min		10 Min.
Max Press 1500	Max Press	From	To	Frac	@ 1.36 CUFT³	Avg		15 Min.
Well Connection P.C.	Annulus Vol.	From	To			HHP Used		Annulus Pressure
Plug Depth 3439.67'	Packer Depth	From	To	Flush	81.86 BBL @ 16 KEEH₂O	Gas Volume		Total Load

Customer Representative TODD			Station Manager D. SCOTT			Treater K. LESLEY		
Service Units	37586	19889	19842	19832	21010			
Driver Names	LESLEY	LAURENCE	—	MCKASKEY				

Time	Casing Pressure	Tubing Pressure	Bbls. Pumped	Rate	Service Log
11:30 PM	10-12-2011				ON LOCATION - SAFETY MEETING
3:30 AM	10-13-2011				RUN 5 1/2 x 15.5# CSG. = 83 JTS.
					SJ = 19.33' INSERT @ 3439.67'
					TURBO-2,3,4,6,8,9,10,12,13,15,64,70,76,81
5:50 AM					CSG. ON BOTTOM
6:00 AM - 6:30 AM					HOOK UP TO CSG. / BREAK CIRC. W/ RIG
8:00 AM	250		5	6	H₂O AHEAD
8:01 AM	250		24	6	SUPERFLUSH II
8:05 AM	200		5	6	H₂O SPACER
8:06 AM	200		6	6	MIX 25SK SCAVENGER @ 14.4 PPG
8:07 AM	150		30	6	MIX 125SK AA-2 @ 15.3 PPG
8:15 AM					SHUT DOWN - CLEAR PUMP & LINE
8:20 AM	150		0	7	DROP PLUG - START DISPLACEMENT
8:30 AM	250		59	6	LIFT PRESSURE
8:54 AM	500		72	5	SLOW RATE / STOP ROTATING CSG.
9:00 AM	1500		82	4	PLUG DOWN - HELD
					CIRC. THRU JOB
			6		PLUG R.H.
					JOB COMPLETE,
					THANKS -
					KEVEN LESLEY

QUALITY OILWELL CEMENTING, INC.

Federal Tax I.D.# 20-2886107

Phone 785-483-2025
Cell 785-324-1041

Home Office P.O. Box 32 Russell, KS 67665

No. 5216

Date	10/5/11	Sec.	32	Twp.	15	Range	14	County	Russell	State	KS	On Location		Finish	12:45 AM		
Lease	Steinle	Well No.	2-32		Location Milberger, 1/2 E, S; into												
Contractor	Southwind Drilling Rig #6				Owner												
Type Job	Surface				To Quality Oilwell Cementing, Inc. You are hereby requested to rent cementing equipment and furnish cementer and helper to assist owner or contractor to do work as listed.												
Hole Size	12 1/4"		T.D.		940'		Charge To									Russell Oil, Inc.	
Csg.	8 5/8 23#		Depth		937'		Street										
Tbg. Size			Depth				City									State	
Tool			Depth				City									State	
Cement Left in Csg.	42'		Shoe Joint		42'		The above was done to satisfaction and supervision of owner agent or contractor.										
Meas Line			Displace		57 Bbls.		Cement Amount Ordered									375 sx (on 3% cc 2% gel)	
EQUIPMENT																	
Pumptrk	9	No.	Cementer	Paul		Common											
Bulktrk	13	No.	Driver	Matt		Poz. Mix											
Bulktrk	PV	No.	Driver	Cory		Gel.											
JOB SERVICES & REMARKS																	
Remarks:	Hulls																
Rat Hole	Salt																
Mouse Hole	Flowseal																
Centralizers	Kol-Seal																
Baskets	Mud CLR 48																
D/V or Port Collar	CFL-117 or CD110 CAF 38																
Est. Circ.	Sand																
Mix 375 sx	Handling																
Displace	Mileage																
Land Plug	2 5/8"																
Cement Circulated	FLOAT EQUIPMENT																
	Guide Shoe																
	Centralizer																
	Baskets																
	AFU Inserts																
	Float Shoe																
	Latch Down																
	Head + Manifold Baffle Plate + Rubber Plug																
	Pumptrk Charge																
	Mileage																
	Tax																
	Discount																
	Total Charge																
X Signature	[Handwritten Signature]																

Thank You!!

Conservation Division
Finney State Office Building
130 S. Market, Rm. 2078
Wichita, KS 67202-3802



Phone: 316-337-6200
Fax: 316-337-6211
<http://kcc.ks.gov/>

Mark Sievers, Chairman
Ward Loyd, Commissioner
Thomas E. Wright, Commissioner

Sam Brownback, Governor

January 12, 2012

LEROY HOLT
Russell Oil, Inc.
PO BOX 8050
EDMOND, OK 73083

Re: ACO1
API 15-167-23748-00-00
Steinle 2-32
NE/4 Sec.32-15S-14W
Russell County, Kansas

Dear Production Department:

We are herewith requesting that the Well Completion Form ACO-1 and attached information for the subject well be held confidential for a period of two years.

Should you have any questions or need additional information regarding subject well, please contact our office.

Respectfully,
LEROY HOLT