



GEOLOGICAL REPORT
 DRILLING TIME & SAMPLE LOG

REPORT PREPARED BY FRANK S. WELLS, GEOLOGIST
 API# - 15-169-20,328

COMPANY **BOP West, LLC**
 LEASE **Lyle Swisher #1**
 FIELD **Wildcat**
 LOCATION **C SW NW NW**
 SEC **8** TWP **16S** RGE **1W**
 COUNTY **Saline** STATE **Kansas**

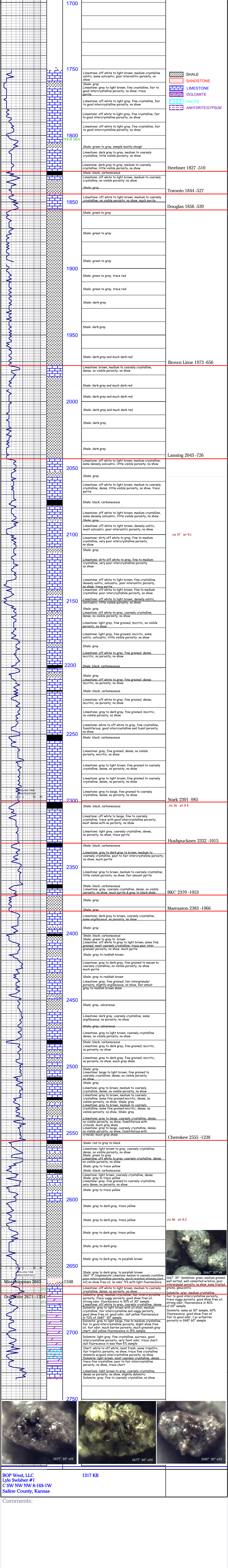
CONTRACTOR **C&G Drilling Rig #2**
 SPUD **10-25-11** COMP **10-25-11**
 SAMPLES SAVED FROM **1700** TO **1870** (RTD)

FORMATION	SAMPLE	E LOG	DATA
Grand	1827	1838	-511
Heebner	1827	1838	-510
Douglas	1827	1838	-510
Brown	1827	1838	-510
Shale	1827	1838	-510
Hushpuckney	2332	2333	-1016
BKC	2370	2374	-1056
Marmaton	2383	2386	-1062
Cherokee	2555	2558	-1241
Mississippian	2665	2668	-1351
Miss Doolittle	2671	2674	-1357
RTD	2735	2738	-1441

REFERENCE WELLS

A	B	C	D
1320 FNL & 330' FNL	716S 1W	BOP West, Harbin #1	
565 FNL & 330' FNL	716S 1W	BOP West, Harbin #2	
1590 FNL & 370' FNL	8-11S 1W	Scott's Production, LLC, Lee Johnson #5	

FORMATION	SAMPLE	E LOG	DATA
Grand	1827	1838	-511
Heebner	1827	1838	-510
Douglas	1827	1838	-510
Brown	1827	1838	-510
Shale	1827	1838	-510
Hushpuckney	2332	2333	-1016
BKC	2370	2374	-1056
Marmaton	2383	2386	-1062
Cherokee	2555	2558	-1241
Mississippian	2665	2668	-1351
Miss Doolittle	2671	2674	-1357
RTD	2735	2738	-1441



BOP West, LLC
 Lyle Swisher #1
 C SW NW NW 8-16S-1W
 Saline County, Kansas

1317 KB

Comments: