



**TRILOBITE TESTING, INC.**

# DRILL STEM TEST REPORT

Russell Oil, Inc

**5 11s 34w Logan, KS**

P.O. Box 8050  
Edmond, Ok 73083

**James D 1-5**

Job Ticket: 44486

**DST#: 2**

ATTN: Steve Angle

Test Start: 2011.09.29 @ 08:18:00

## GENERAL INFORMATION:

Formation: **LKC J**

Deviated: No Whipstock: ft (KB)

Time Tool Opened: 11:36:30

Time Test Ended: 16:01:00

Test Type: Conventional Bottom Hole (Reset)

Tester: Bradley Walter

Unit No: 40

**Interval: 0.00 ft (KB) To 0.00 ft (KB) (TVD)**

Reference Elevations: 3260.00 ft (KB)

Total Depth: 4396.00 ft (KB) (TVD)

3249.00 ft (CF)

Hole Diameter: 7.88 inches Hole Condition: Good

KB to GR/CF: 11.00 ft

**Serial #: 8652**

**Inside**

Press @ Run Depth: 28.91 psig @ 4346.00 ft (KB)

Capacity: 8000.00 psig

Start Date: 2011.09.29

End Date:

2011.09.29

Last Calib.:

2011.09.29

Start Time: 08:18:05

End Time:

16:00:59

Time On Btm:

2011.09.29 @ 11:36:15

Time Off Btm:

2011.09.29 @ 13:10:45

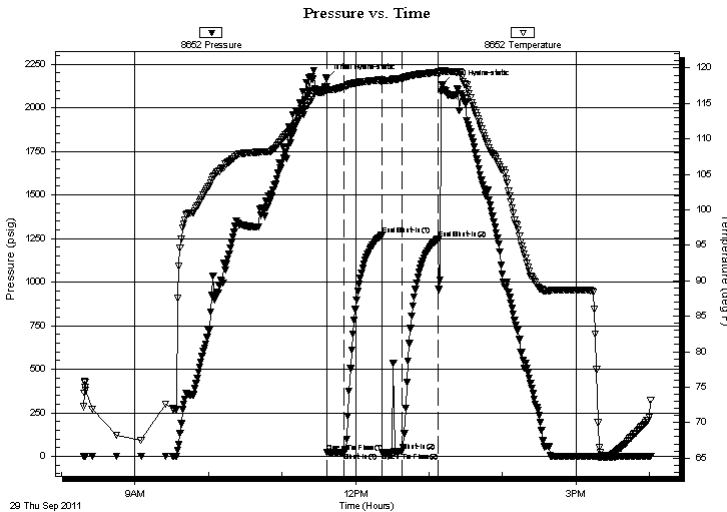
**TEST COMMENT:** IF: Surface blow, died @ 9 minutes..

IS: No return.

FF: No blow.

FS: No return.

## PRESSURE SUMMARY



Time (Min.)	Pressure (psig)	Temp (deg F)	Annotation
0	2166.49	117.40	Initial Hydro-static
1	22.94	116.71	Open To Flow (1)
15	23.42	117.38	Shut-In(1)
45	1268.43	118.35	End Shut-In(1)
46	25.03	117.97	Open To Flow (2)
62	28.91	118.54	Shut-In(2)
92	1249.30	119.41	End Shut-In(2)
95	2130.60	119.55	Final Hydro-static

## Recovery

Length (ft)	Description	Volume (bbl)
20.00	mud 100m	0.10

\* Recovery from multiple tests

## Gas Rates

Choke (inches)	Pressure (psig)	Gas Rate (Mcf/d)



**TRILOBITE  
TESTING, INC.**

# DRILL STEM TEST REPORT

**FLUID SUMMARY**

Russell Oil, Inc

**5 11s 34w Logan, KS**

P.O. Box 8050  
Edmond, Ok 73083

**James D 1-5**

Job Ticket: 44486

**DST#: 2**

ATTN: Steve Angle

Test Start: 2011.09.29 @ 08:18:00

## Mud and Cushion Information

Mud Type: Gel Chem

Cushion Type:

Oil API:

deg API

Mud Weight: 9.00 lb/gal

Cushion Length:

ft

Water Salinity:

ppm

Viscosity: 57.00 sec/qt

Cushion Volume:

bbbl

Water Loss: 6.40 in<sup>3</sup>

Gas Cushion Type:

Resistivity: ohm.m

Gas Cushion Pressure:

psig

Salinity: 5500.00 ppm

Filter Cake: 1.00 inches

## Recovery Information

Recovery Table

Length ft	Description	Volume bbl
20.00	mud 100m	0.098

Total Length: 20.00 ft      Total Volume: 0.098 bbl

Num Fluid Samples: 0

Num Gas Bombs: 0

Serial #:

Laboratory Name:

Laboratory Location:

Recovery Comments:

Serial #: 8652

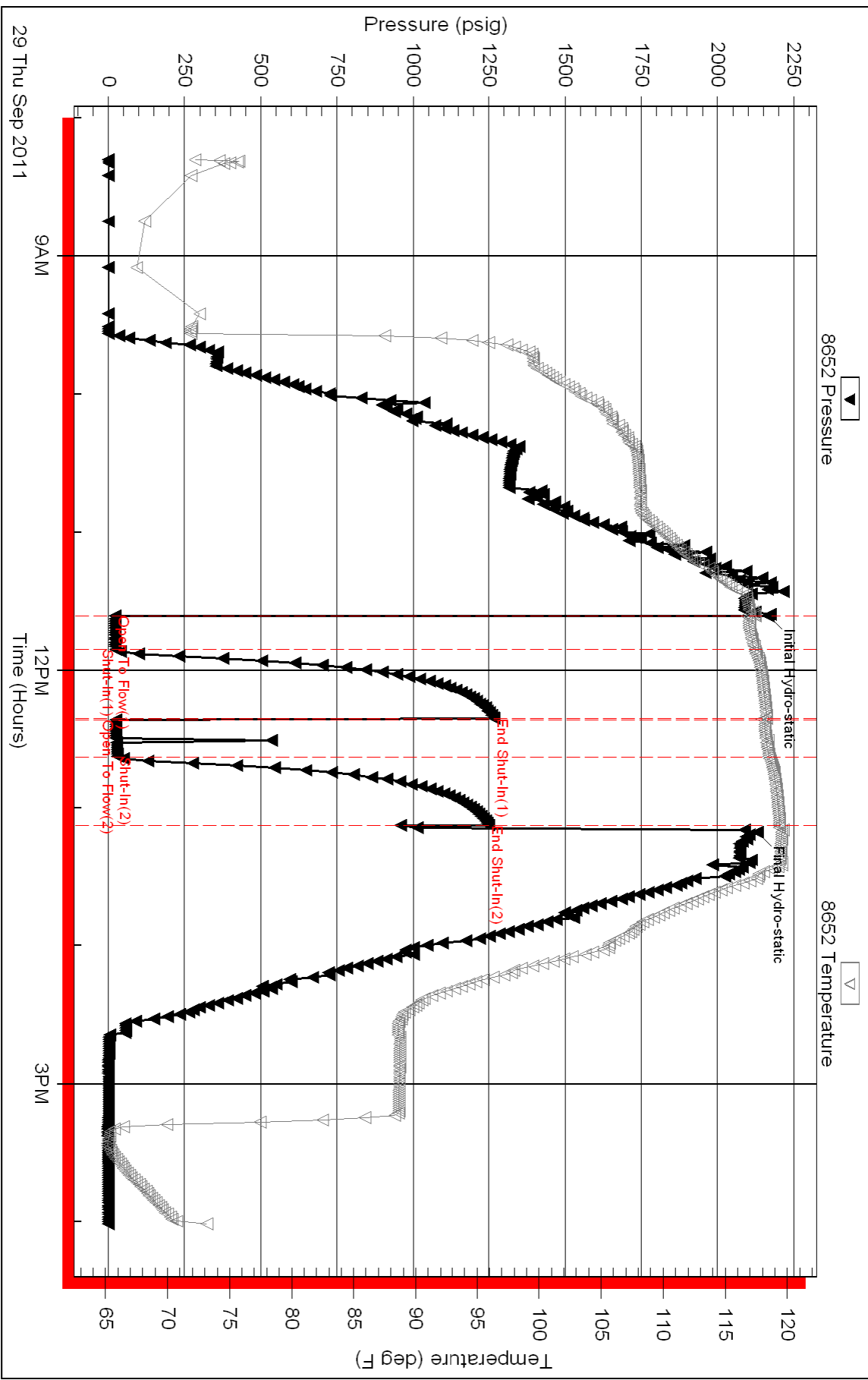
Inside

Russell Oil, Inc

James D 1-5

DST Test Number: 2

### Pressure vs. Time



Triobite Testing, Inc

Ref. No: 44486

Printed: 2011.09.30 @ 08:28:23