

1,800,000

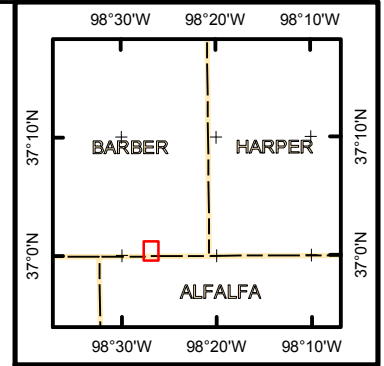
98°27'0"W

1,805,000



7
T35S - R10W

HELEN P FARNEY
TTEE OF THE HELEN
P FARNEY TRUST



13,440,000 37°10'N

13,440,000 37°10'N

12

T35S - R11W

BHL

NAD27 State Plane Kansas South
Lat: 37.013724 X: 2015265.207
Lon: -98.447723 Y: 126375.4575

8

13,435,000 37°00'N

13,435,000 37°00'N

13

WATKINS,
CHARLES E, A
SINGLE MAN

18

FARNEY, BRANDON
T & MARIANNA
L FARNEY H/W

17

Shell Watkins
& Farney 3510

ROBERT
1-13H

SWD 18-1H
NAD27 State Plane Kansas South
Lat: 36.999287 X: 2015240.456
Lon: -98.447818 Y: 121118.6414

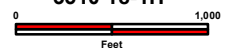
T29N - R12W

14

13

Shell Gulf of Mexico Inc.

KANSAS
BARBER COUNTY
T35S - R10W SEC. 7, 18
Shell Watkins and Farney
3510 18-1H



November 7, 2011 E. Gilbertson - 4105 B by Eric Gilbertson
ShellWatkins&Farney3510_18-1H_B2-1H.mxd UTM 14N - NAD27 - US Feet

1,800,000

98°27'0"W

1,805,000