

T30S, R7W, 6th P.M.

SGOMI

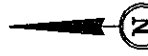
Well location, MORROW LAND 3007 #28-1H, located as shown in the SW 1/4 SE 1/4 of Section 28, T30S, R7W, 6th P.M., Kingman County, Kansas.

BASIS OF ELEVATION

SPOT ELEVATION LOCATED AT THE NORTHEAST CORNER OF SECTION 22, T33S, R7W, 6th P.M. TAKEN FROM THE ANTHONY, QUADRANGLE, KANSAS, HARPER COUNTY, 7.5 MINUTE QUAD (TOPOGRAPHIC MAP) PUBLISHED BY THE UNITED STATES DEPARTMENT OF THE INTERIOR, GEOLOGICAL SURVEY. SAID ELEVATION IS MARKED AS BEING 1348 FEET.

BASIS OF BEARINGS

BASIS OF BEARINGS IS A G.P.S. OBSERVATION.



CERTIFICATE

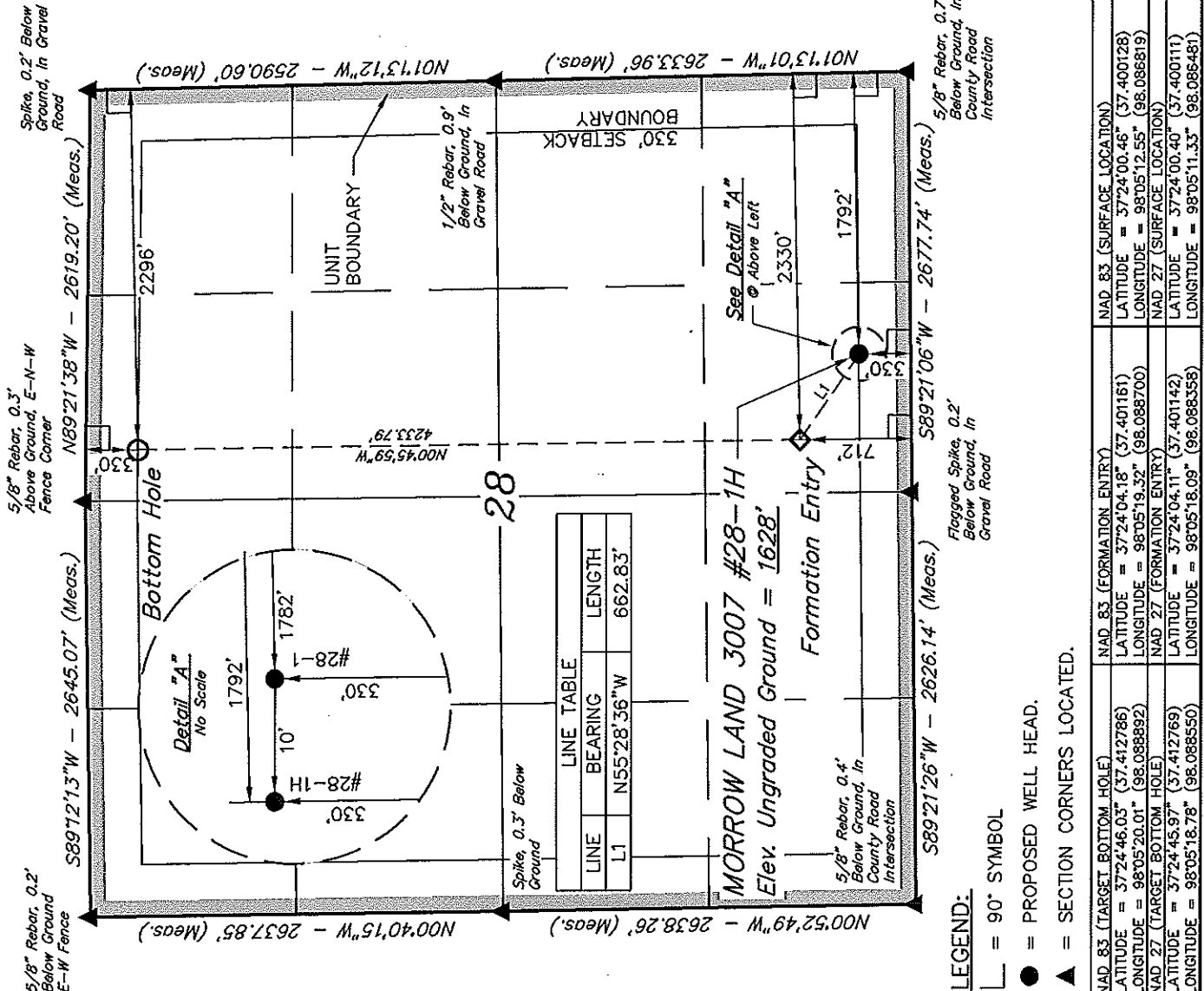
THIS IS TO CERTIFY THAT THE ABOVE PLANNED SURVEY WAS MADE IN ACCORDANCE WITH THE FIELD NOTES OF ACTUAL SURVEYS MADE BY ME OR UNDER MY CLOSE PERSONAL SUPERVISION AND THAT THE SAME ARE TRUE AND CORRECT TO THE BEST OF MY KNOWLEDGE AND BELIEF.



REVISED: 11-22-11

UNTAH ENGINEERING & LAND SURVEYING
 85 SOUTH 200 EAST - VERNAL, UTAH 84078
 (435) 789-1017

SCALE	1" = 1000'	DATE SURVEYED:	11-01-11	DATE DRAWN:	11-07-11
PARTY	L.S. K.H. C.C.	REFERENCES	G.L.O. PLAT		
WEATHER	COOL	FILE	SGOMI		



LEGEND:

- = 90° SYMBOL
- = PROPOSED WELL HEAD.
- ▲ = SECTION CORNERS LOCATED.

NAD 83 (TARGET BOTTOM HOLE)	NAD 83 (FORMATION ENTRY)	NAD 83 (SURFACE LOCATION)
LATITUDE = 37°24'46.03" (37.412786)	LATITUDE = 37°24'04.18" (37.401161)	LATITUDE = 37°24'00.46" (37.400128)
LONGITUDE = 98°05'20.01" (98.088892)	LONGITUDE = 98°05'19.52" (98.088700)	LONGITUDE = 98°05'12.55" (98.086819)
LATITUDE = 37°24'45.97" (37.412769)	LATITUDE = 37°24'04.11" (37.401142)	LATITUDE = 37°24'00.40" (37.400111)
LONGITUDE = 98°05'18.78" (98.088550)	LONGITUDE = 98°05'18.09" (98.088358)	LONGITUDE = 98°05'11.33" (98.086481)