

T34S, R7W, 6th P.M.

SGOMI

Well location, DAVIS 3407 #27-1H, located as shown on the Line Between the SE 1/4 SW 1/4 of Section 27 and the NE 1/4 NW 1/4 of section 34, T34S, R7W, 6th P.M., Harper County, Kansas.

BASIS OF ELEVATION

SPOT ELEVATION LOCATED AT THE NORTHEAST CORNER OF SECTION 22, T35S, R7W, 6th P.M. TAKEN FROM THE ANTHONY, QUADRANGLE, KANSAS, HARPER COUNTY, 7.5 MINUTE QUAD (TOPOGRAPHIC MAP) PUBLISHED BY THE UNITED STATES DEPARTMENT OF THE INTERIOR, GEOLOGICAL SURVEY. SAID ELEVATION IS MARKED AS BEING 1348 FEET.

BASIS OF BEARINGS

BASIS OF BEARINGS IS A G.P.S. OBSERVATION.

1/2" Rebar, 0.3' Below Ground, Steel Post

5/8" Rebar, 0.4' High, Fence Corner

1/2" Rebar, 0.2' Below Ground, In Abandoned Road Intersection

189' 3" (Meas.)
 2653.43' (Meas.)
 N89°36'31"W - 2656.36' (Meas.)

See Detail "A" @ Below Right
 DAVIS 3407 #27-1H
 Elev. Ungraded Ground = 1403'

Formation Entry

N01°14'59"W - 5263.03' (Meas.)

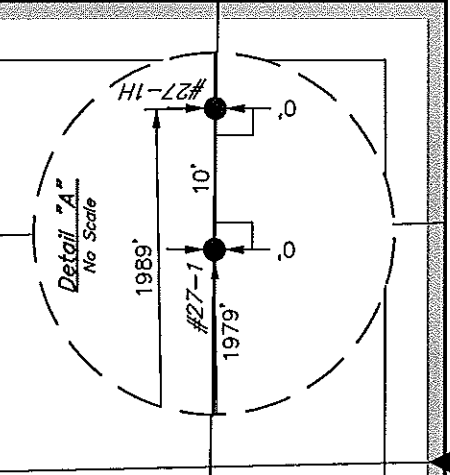
NORTH - 5280.00' (G.L.O.)

LINE	BEARING	LENGTH
L1	S33°13'22"E	605.62'

501°14'59"E
 4406.37'

34

330' SETBACK



T34S
 T35S

WEST - 2640.00' (G.L.O.)

5/8" Rebar, 0.4' High, E-W-N Fence

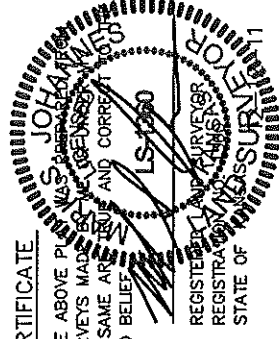
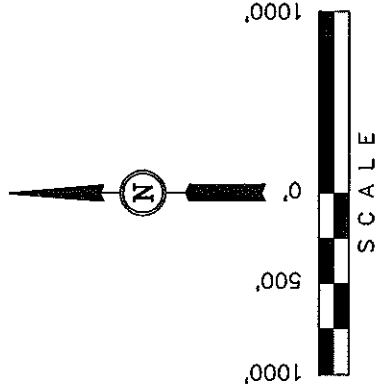
S89°45'21"W
 2641.21' (Meas.)

Spike, 0.1' Below Ground, In Road Intersection

LEGEND:

- = 90° SYMBOL
- = PROPOSED WELL HEAD.
- ▲ = SECTION CORNERS LOCATED.

NAD_83 (TARGET BOTTOM HOLE)	NAD_83 (FORMATION ENTRY)	NAD_83 (SURFACE LOCATION)
LATITUDE = 37°02'14.71" (37.037419)	LATITUDE = 37°02'58.27" (37.049519)	LATITUDE = 37°03'03.28" (37.050911)
LONGITUDE = 98°03'57.67" (98.066019)	LONGITUDE = 98°03'58.83" (98.066342)	LONGITUDE = 98°04'02.92" (98.067478)
NAD_27 (TARGET BOTTOM HOLE)	NAD_27 (FORMATION ENTRY)	NAD_27 (SURFACE LOCATION)
LATITUDE = 37°02'14.62" (37.037394)	LATITUDE = 37°02'58.18" (37.049494)	LATITUDE = 37°03'03.19" (37.050886)
LONGITUDE = 98°03'56.44" (98.065678)	LONGITUDE = 98°03'57.60" (98.066000)	LONGITUDE = 98°04'01.69" (98.067136)



CERTIFICATE

THIS IS TO CERTIFY THAT THE ABOVE PUBLISHED FIELD NOTES OF ACTUAL SURVEYS MADE UNDER MY SUPERVISION AND THAT THE SAME ARE TRUE AND CORRECT TO THE BEST OF MY KNOWLEDGE AND BELIEF.

REGISTERED PROFESSIONAL SURVEYOR
 REGISTRATION NO. LS-1260
 STATE OF KANSAS

UNTAH ENGINEERING & LAND SURVEYING
 85 SOUTH 200 EAST - VERNAL, UTAH 84078
 (435) 789-1017

SCALE	1" = 1000'	DATE SURVEYED:	11-05-11	DATE DRAWN:	12-09-11
PARTY	L.S. K.H. C.C.	REFERENCES	G.L.O. PLAT		
WEATHER	COOL	FILE	SGOMI		