

WESLEY D. HANSEN Consulting Petroleum Geologist

KGS
AAPG
Kansas License #418

212 N. Market, Suite 257, Wichita, KS 67202
Office: 316-267-7313 Cellular ; 316-772-6188

LITHOLOGY STRIP LOG

WellSight Systems

Scale 1:240 (5"=100') Imperial
Measured Depth Log

Well Name: Trans Pacific Oil Corporation #1-13 Muir Unit "A"
Location: 2505' FSL, 781' FWL of Section 13-6S-18W
License Number: API: 15-163-23984
Spud Date: 10-7-2011
Surface Coordinates: 2505' FSL, 781' FWL of 13-6S-18W

Region: Rooks County, KS
Drilling Completed: 10-14-2011

Bottom Hole Coordinates: Vertical hole

Ground Elevation (ft): 1950' K.B. Elevation (ft): 1955'
Logged Interval (ft): 2800' To: RTD Total Depth (ft): 3690'
Formation: Arbuckle at RTD

Type of Drilling Fluid: Chemical - displaced from 2645'-2724'
Printed by WellSight Log Viewer from WellSight Systems 1-800-447-1534 www.WellSight.com

OPERATOR

Company: Trans Pacific Oil Corporation
Address: 100 S. Main
Suite 200
Wichita, KS 67202

GEOLOGIST

Name: Wesley D. Hansen
Company: Wesley D. Hansen - Consulting Petroleum Geologist
Address: 212 N. Market, Suite 257
Wichita, KS 67202
Office: 316-263-7313 Cellular: 316-772-6188

COMMENTS

Contractor: American Eagle Rig #3
Pusher: Brad Parker

Surface Casing: 8 5/8" set at 218' w/150 sx
Production Casing: 4 1/2" casing set at +or- 3690'

Mud by: MudCo - Gary Schmidtberger and Chuck Herbers were the engineers

DST's by: Trilobite Testing - Kevin Mack was the tester

Logs by: Superior Well Services DIL, CN-CD, ML, Sonic

Deviation Surveys: 1 deg. @ 221; 1 deg. @ 2520'; 1 deg. @ 3247'

Bit #	Size	MFG	Type	Depth Out	Footage Cut	Hours on bit
1	12 1/4"		rerun	221'	221'	2 1/4
2	7 7/8"		QX21-S	2520'	2299'	30

Bit #	Size	MFG	Type	Depth Out	Footage Cut	Hours on bit
1	12 1/4"		rerun	221'	221'	2 1/4
2	7 7/8"		QX21-S	2520'	2299'	30
3	7 7/8"		QX21-J	3690'	1170'	41 1/4

FORMATION TOPS AND STRUCTURAL COMPARISON

FORMATION	SAMPLE TOPS		LOG TOPS		COMPARISON WELL
	Depth	Datum	Depth	Datum	
Anhydrite	1417'	+538	1416'	+539	-12'
B/Anhydrite	1445'	+510	1444'	+511	-10
Topeka	2905'	-950	2906'	-951	-14'
Heebner Shale	3112'	-1157	3113'	-1158	-15'
Toronto	3139'	-1184	3136'	-1181	-12'
Lansing	3155'	-1200	3153'	-1198	-9'
BKC	3383'	-1428	3384'	-1429	-15'
Arbuckle	3633'	-1678	3633'	-1678	-153'
RTD	3690'	-1735			
LTD			3692'	-1737	

COMPARISON WELL
Trans Pacific Oil Corp.
Hansen Foundation "A" #1-12
750' FSL, 330' FWL 12-6S-18W

DST No. 1 Toronto/Lansing

Interval: 3143'-3210'

Times: 30-60-60-90

Recovery: 2' FO; 15' O&WCM (20o, 30w, 50m);

62' WCM w/oil spots (20w, 80m)

FP: 33-39/40-50 SIP: 1117-1077

HP: 1529-1450 BHT: 95 deg. F

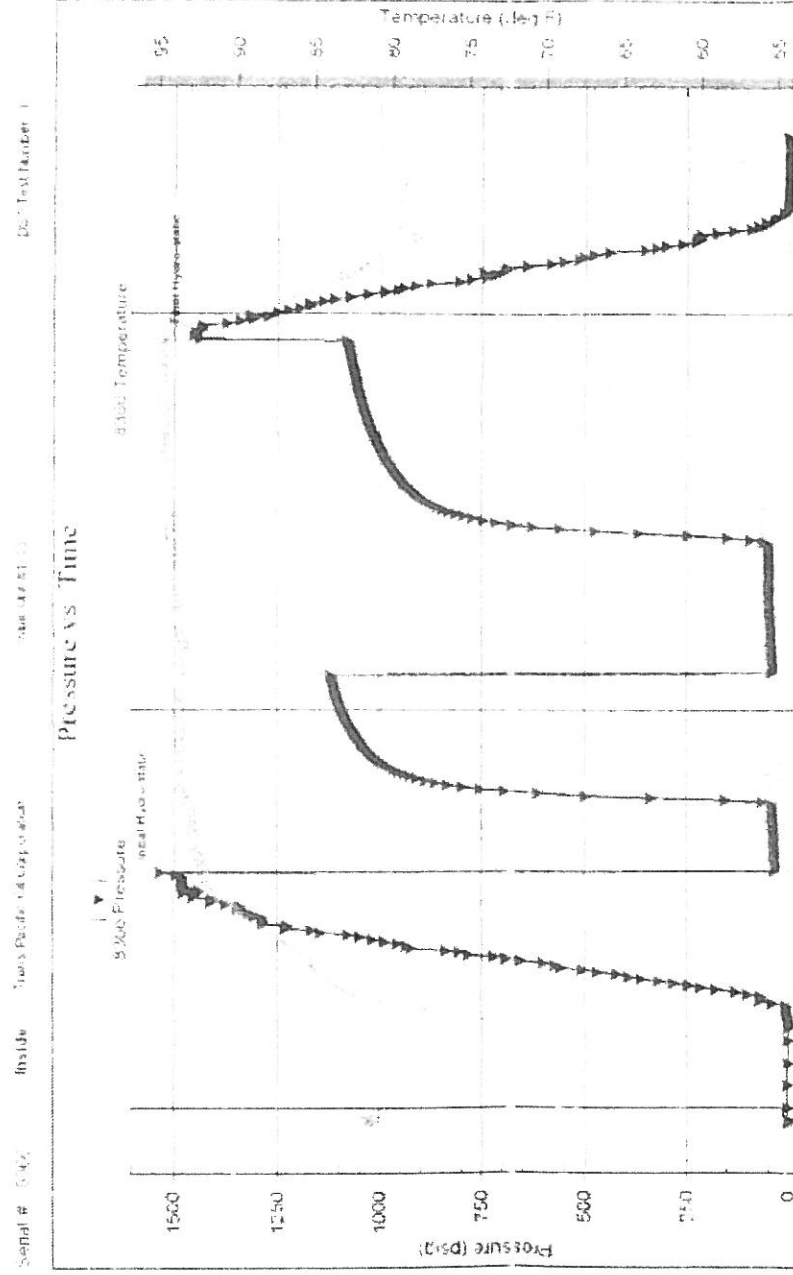
IFP: tool slid 15' with 1" blow, died in 1 minute; surface blow at 5 min. mark bldg. to 1 1/4"

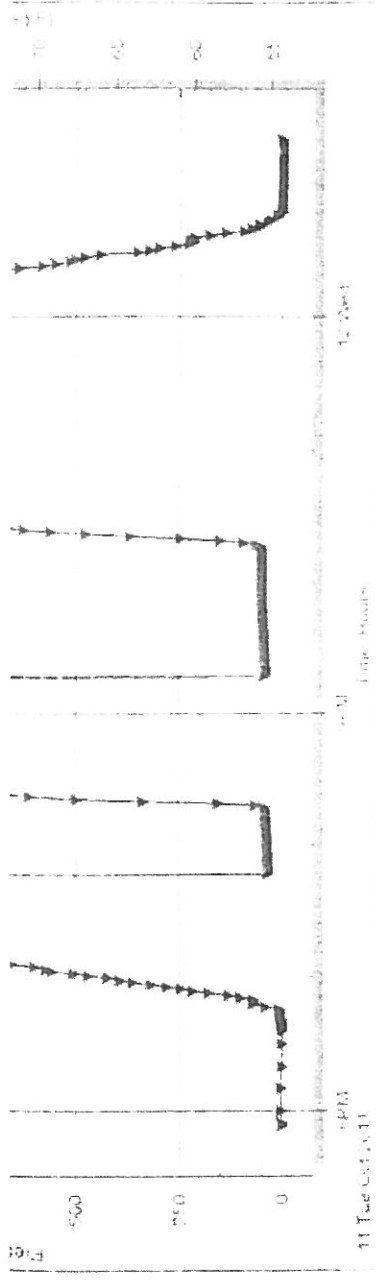
ISIP: no return

FPP: weak surface blow at 15 min. mark bldg. to 1 1/4"

FSIP: no return

DRILL STEM TESTS





DRILL STEM TESTS

DST No. 2 Lansing 70' Zone

Interval: 3225'-3247'

Times: 30-60-60-90

Recovery: 434' GIP; 186' GCO (30g, 70o); 252'

GM&WCO (10g, 10m, 20w, 60o); 62' GO&MCW

(10g, 10o, 10m, 70w); oil gravity 37 deg.; chl. of

water was 35K

FP: 37-101/107-209 SIP: 1144-1128

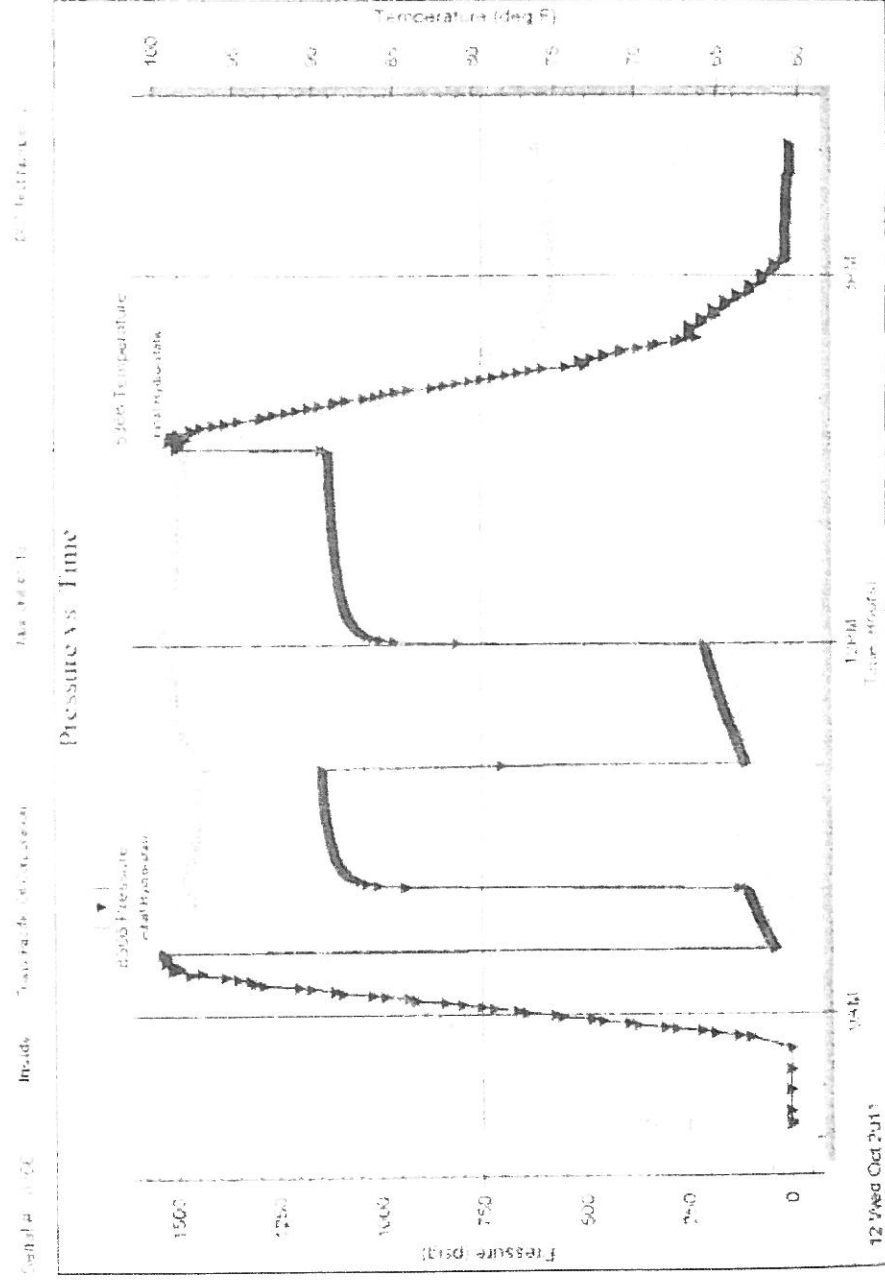
HP: 1534-1500 BHT: 99 deg. F

IFP: tcol slid 10'; fair blow bldg. to B.O.B. in 8 minutes

ISIP: return blow built to 3 1/2 inches

FFP: B.O.B. in 10 minutes

FSIP: return blow built to 9 inches

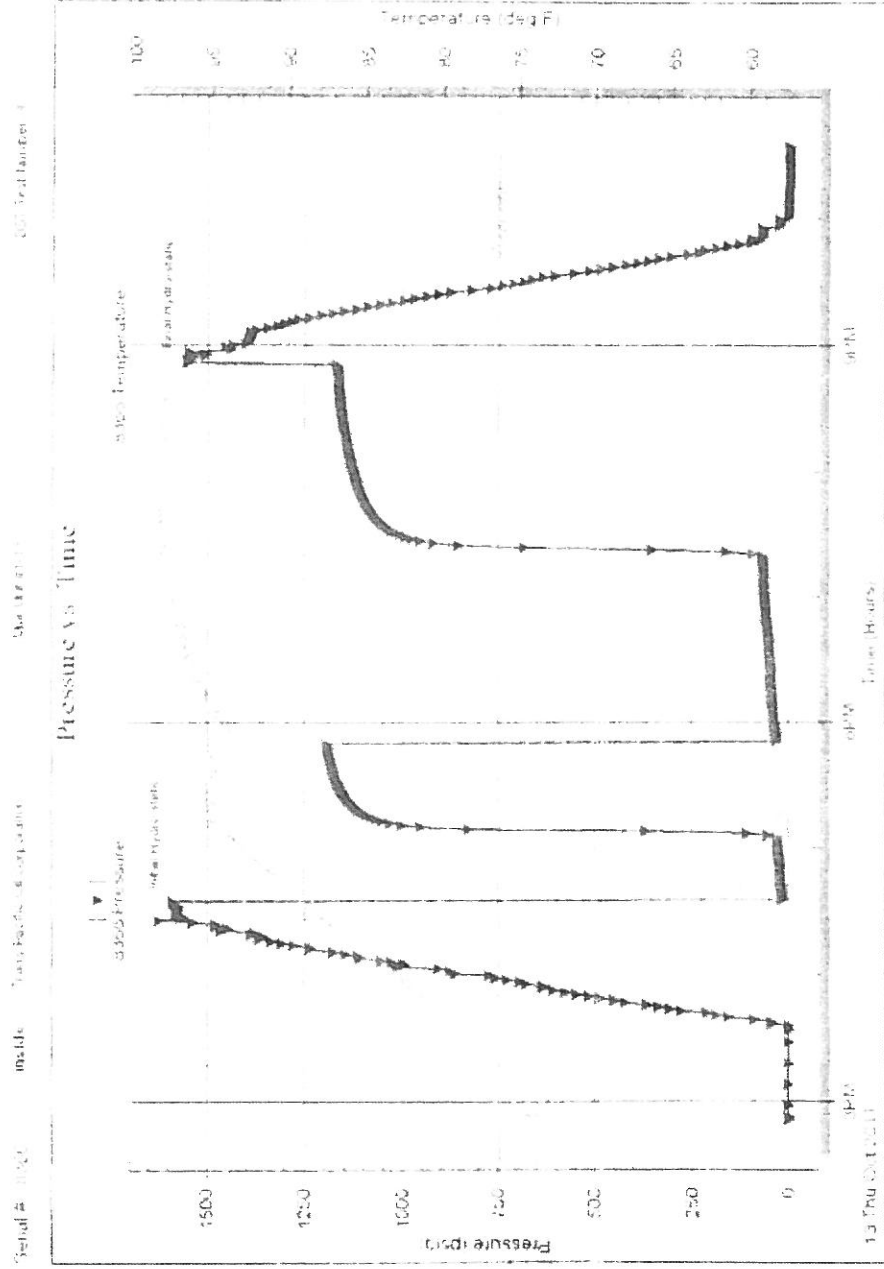


12 Wed Oct 2, 1931

DRILL STEM TESTS

DST No. 4 Lansing 160' Zone
 Interval: 3304-3323'
 Times: 30-45-90-90
 Recovery: 50' GIP; 97' CGO (20g, 80o); 42'
 G&OCM (10g, 30o, 60m); oil grav. 30 deg.
 FP: 15-31/32-68 SIP: 1193-1167
 HP: 1585-1553 BHT: 98 deg. F

IFP: weak surface blow built to 1/8 inch
 ISIP: no return
 FFP: surface blow built to 3 inches, died
 back to 1 1/2 inches
 FSIP: no return



ROCK TYPES

- Anhy
- Cht
- Coal
- Congl
- Dol
- Gyp
- Lmst

- Salt
- Shale
- Shcol
- Shgy
- Siltst
- Ss
- Carb sh

- Dol
- Dtd
- Gry sh
- Sandylms
- Shale
- Siltstn
- Shlyslts

- Sltysl
- Sdy dolo
- Silty dolo
- Shy dolo
- Shaly ls

- ### FOSSIL
- Algae
 - Amph
 - Belm
 - Bioclst
 - Brach
 - Bryozoa
 - Cephal
 - Coral
 - Crin
 - Fchin

ACCESSORIES

- Plant
- Strom
- Fuss
- Oomold

- ### MINERAL
- Anhy
 - Arggrn
 - Arg
 - Bent
 - Rit

- Glau
- Gyp
- Hvymin
- Kaol
- Marl
- Minxl
- Nodule
- Phos
- Pyr
- Salt
- Sandv

- ### STRINGER
- Anhy
 - Arg
 - Bent
 - Coal
 - Dol
 - Gyp
 - Ls
 - Mrst
 - Siltstrg
 - Sectrn

- Coal
- Dol
- Gyp
- Ls
- Mrst
- Sltstrg
- Ssstrg
- Carbsh
- Clystn
- Dol
- Grysh
- Gryslt
- Lms
- Sandylms
- Sh
- Sltstn

- Marl
- Minxl
- Nodule
- Phos
- Pyr
- Salt
- Sandy
- Silt
- Sil
- Sulphur
- Tuff
- Chlorite
- Dol
- Sand
- Silty

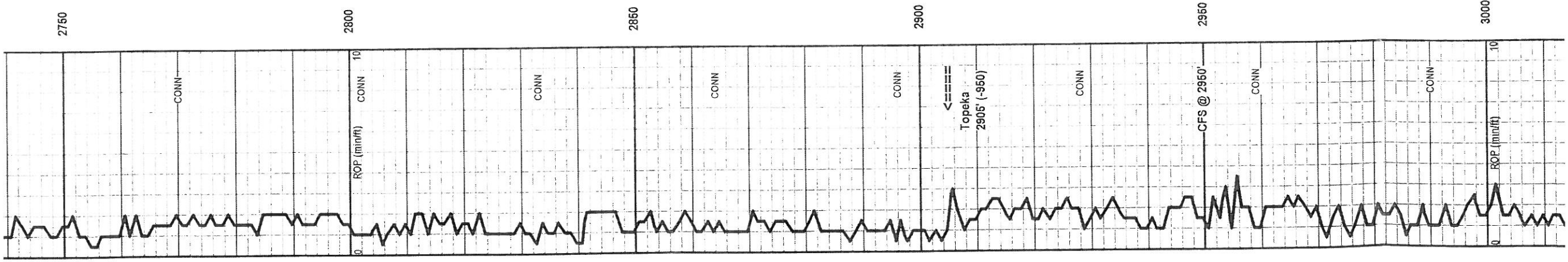
- MINERAL
- Anhy
- Arggrn
- Arg
- Bent
- Bit
- Breclrag
- Calc
- Carb
- Chtdk
- Chtlt
- Dol
- Feldspar
- Ferrpel
- Ferr

- Bioclst
- Brach
- Bryozoa
- Cephal
- Coral
- Crin
- Echin
- Fish
- Foram
- Fossil
- Gastro
- Oolite
- Ostra
- Pelec
- Pellet
- Pisolite

OTHER SYMBOLS

- INTERVALS
- Core
- Dst
- Dst
- EVENTS
- Rft
- Dst top/base
- OIL SHOWS
- Even
- Spotted
- Quest.
- Trace
- Dead
- Gas show

Curve Track 1 ROP (min/ft)	Depth	Lithology	Geological Descriptions	Remarks
	1400' 1450' 2700' 2750'			<p>Anhydrite 1417' (+538)</p> <p>Base/Anhydrite 1445' (+510)</p> <p>Bit trip at 2620' - Pipe strap was 0.24' long to the board</p> <p>Morning Depth & Activity 10-7-2011 MIRT - Spud at 11:45 PM 10-8 WOC @ 221' 10-9 Drig. @ 1421' 10-10 Drig. @ 2465' 10-11 Drig. @ 3066' 10-12 TOOH for DST #2 @ 3247' 10-13 TIH after DST #3 @ 3273' 10-14 Drig. @ 3444' 10-15 RTD @ 3690' logging completed - running casing</p> <p>jet - displaced mud system from 2645'-2724'</p>



Ls: lt-med brn, tan vf-cryptoxin, occ gray cryptoxin; some offwhite, tan mic-vfxin dense, trace fusilinids

Geologist on location at 2789'

Ls: mix AA; influx lt-med gray vf-cryptoxin, mottled IP; more offwhite dense

Ls: lt-med brn, lt-med gray vf-cryptoxin; some mottled gray granular, NVP

Ls: mix AA with occ tan cryptoxin with scatt. vug. por.; more tan, offwhite vfxin dense, some ppt por., N.S.; Sh: some gray, very pyritic

Ls: mix AA with some offwhite, lt gray mic-fnxin with poor ppt por., N.S.; some lt-med gray shale

Sh: lt-med gray; some lt-med gray silty shale and siltst; Ls: more tan, lt brn vf-cryptoxin, fossilif. IP and mottled tan, lt gray fn granular, poor to NVP

Ls: various lt-med brn, lt-med gray vf-cryptoxin, NVP, some lt-med gray shale and dark gray silty shale; occ gray siltst

Ls: various dense AA, some mottled gray granular, NVP, sl influx; lt gray opa chert; minor gray shale and micac. gray sandy siltst; common recirc. shales

90' spl - Sh: some med gray, silty and micac. IP, some red-brn; Ls: lt-med gray, some lt-med brn vf-cryptoxin, mottled IP

2900' spl - Sh: definite influx med to dark gray, micac. and carbon. IP; some black carbon., fissile; Ls: influx tan, offwhite, lt gray mic-vfxin dense, some ppt por., N.S.

10' spl - Ls: tan, lt brn, lt gray vfxin dense and mottled gray granular, NVP; decr. shale % AA

20' spl - sl influx gray micac. siltst and micac. vfg Sst; Ls: sl influx lt-med brn and dark gray cryptoxin

Topeka 2905' (-950)

Ls: influx mottled gray granular and lt-med gray vfxn, NVP; lesser tan, lt brn vf-cryptoxin, NVP; some dark gray to black carbon and fissile shale

Ls: flood mottled med to dark gray vf-cryptoxin to granular; some med brn cryptoxin, NVP

Ls: lt-med gray, lt-med brn vf-cryptoxin; decr. mottled gray AA; occ offwhite micxin subchalky IP; some med to dark gray shale

CFS 2950' 20" spl - Ls: lt gray, tan, offwhite mic-vfxin dense; incr. lt-med gray shale %; 45" spl - Ls: influx tan, offwhite dense AA and lt-med gray vfxin dense; occ lt-med brn cryptoxin; trace tan fxin with interxin por., sl show brn listless oil, no odor, patchy fluor.; some tan with ppt por., barren

trace residual shows

70' spl - Ls: various brn, gray, tan vf-cryptoxin; occ black carbon. shale

80' spl - Sh: mcr. med gray, silty, some micac. gray siltst; Ls: med to dark brn cryptoxin and lt-med gray vf-cryptoxin

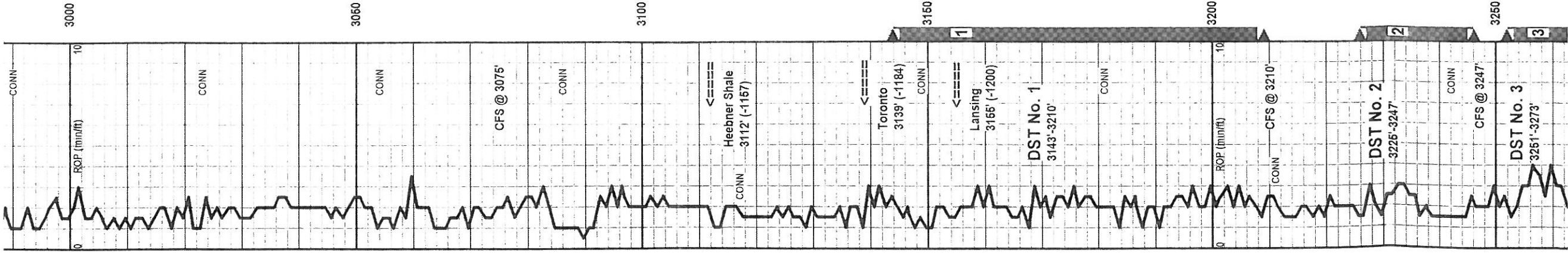
90' spl - Ls: good influx tan, lt brn vf-cryptoxin, NVP, lt-med gray mic-vfxin dense, subchalky IP; some gray shale AA

3000' spl - Ls: tan, lt brn vf-cryptoxin AA; sl influx tan, lt brn mic-vfxin with ppt por.; some offwhite, lt gray micac. siltst and med gray silty shale

Ls: mix offwhite, tan mic-vfxin dense, occ ppt por., one chip with spotty stain; tan, lt brn fn granular with poor to NVP, NS.

Ls: influx med to dark gray, gray-brn vf-cryptoxin, mottled IP; Sh: mcr. med to dark gray

Ls: tan, lt brn mic-fnxin with ppt por., some subchalky, N.S.; lt brn, lt-med gray vf-cryptoxin, NVP; some dark gray and occ black shale



chip with spotty stain, tan. It brn fn granular with poor to NVP, NS

Ls: influx med to dark gray, gray-brn vf-cryptoxin, mottled IP; Sh: incr. med to dark gray

Ls: tan, lt brn mic-fnxln with ppt por., some subchaly. N.S.; lt brn, lt-med gray vf-cryptoxln, NVP; some dark gray and occ black shale

40' spl - Sh: sl influx black carbon.; Ls: tan, offwhite fn granular, fossilif. IP with inter and intra-particle por., N.S.

50' spl - Ls: mic-fnxln with por. AA; some med brn cryptoxln to mottled sl granular, NVP; some mottled brn/offwhite marl

60' spl - Ls: lt. gray, lt-med brn cryptoxln

70' spl - Ls: mix AA with Sh: lt-med gray, some black carbon.

75' spl - Sh: med gray, red-brn; Ls: some sl mottled tan granular, NVP; some tan, lt brn mic-fnxln with ppt por., N.S.

CFS 3075' spls - Ls: tan, lt brn mic-fnxln with ppt por., N.S.; rare tan oolitic with fair-good line oomoldic por., trace with patchy stain; trace tan vfxln with patchy ppt por. with dark brn stain; trace-occ tan, offwhite mic-vfxln with spotty dark brn oily stain, no odor, no fluor.; med brn, gray cryptoxln and tan, lt gray mic-vfxln dense at base, N.S.; trace dark gray opq chert

Ls: tan, lt gray, lt brn cryptoxln; some mottled gray granular, fossilif., NVP; trace chert AA

Ls: tan fn granular with good inter-particle por.; offwhite, tan micxln subchaly. N.S.

Ls: tan, lt gray, offwhite mic-vfxln dense

20' spl - Ls: tan, lt gray, lt brn vf-cryptoxln; common tan, offwhite mic-vfxln dense; sl influx tan vfxln dolomite, N.S.

30' spl - Ls: various dense with some dolomite AA; Sh: sl influx black carbon.

40' spl - Ls: lt-med brn cryptoxln; Sh: lt-med gray, some silty with some gray micac. siltst

50' spl - Sh: lt-med gray and black; Ls: influx offwhite, tan mic-fnxln, fossil hash, subchaly to occ chaly

60' spl - Ls: influx lt-med gray vf-cryptoxln, some pyritic, scatt. tan granular with poor vug, and inter-particle por. with dark brn oily stain, no odor, no fluor., nfo, nsq; scatt. gray, brn opq chert

70' spl - Ls: various gray, lt brn cryptoxln, sl cherty; offwhite mic-vfxln dense, subchaly; several chips offwhite, tan cryptoxln to granular with inter-particle and some vug por. with spotty brn stain, no odor, nfo, some dull even fluor.

80' spl - Ls: several chips tan, offwhite med to coarse xln, oolitic IP with inter-particle and inter-oolitic por. with spotty stain, no odor, nfo; predom. offwhite, tan mic-vfxln, fossilif. IP, subchaly IP and tan, lt gray cryptoxln, N.S.

90' spl - Ls: tan, lt gray cryptoxln and offwhite mic-vfxln dense, subchaly; good influx offwhite, lt gray opq chert, N.S.

3200' spl - Ls: various dense, cherty AA; scatt. tan vfxln dolomite; 10' spl had incr. in red-brn and med gray shale

10' spl - Ls: tan, lt brn, lt gray cryptoxln, sl cherty; very scatt. tan granular to sl oolitic with poor inter-particle por., patchy to even stain, sl sfo, no odor, dull fluor.

CFS 3210' spls - Ls: offwhite, tan med-coarse xln with vug. and inter-particle por. with sl-fair odor, spotty lt stain, sfo on break; some tan dense with spotty stain and slow bleeding gas, shows very lt oil on break; offwhite, tan mic-vfxln and tan, lt gray cryptoxln, N.S.; Sh: influx med gray

30' spl - Ls: influx lt-med gray vf-cryptoxln; trace tan coarse xln, fossilif. and tan oolitic with poor inter-oolitic and inter-particle por. with spotty ppt stain, no odor, nfo, even fluor.

40' spl in remarks column

47' spl - Sh: sl influx black carbon.; Ls: predom. tan, lt gray cryptoxln; lesser offwhite mic-vfxln dense

CFS 3247' spls - Ls: tan, lt brn oolitic with poor to fair inter-oolitic por., common spar matrix, with fair to good odor, sl pungent, lt brn stain, sl show to on break; occ offwhite vf-cryptoxln with patchy stain; offwhite micxln subchaly to chaly at base

60' spl - trashy; Ls: tan, lt gray, lt brn cryptoxln; Sh: vc gray, red-brn

70' spl - Ls: good influx tan, lt brn cryptoxln and offwhite, tan mic-vfxln dense, NVP, N.S.

CFS 3273' 20' spl - Ls: flood offwhite mic-vfxln dense, subchaly to occ chaly; occ tan mic-vfxln with spoaty bot

7:00 AM at 3066' on 10-11-2011

trace residual shows

MudCo Mud Check at 3096'

8:45 AM on 10-11-2011
 wt vis vl pH chl
 8.8 45 4.8 11.5 500
 PV YP Gels lcm solids
 9 20 8/10 # 3.6%

Heebner Shale 3112' (-1157)

Toronto 3139' (-1184)

Lansing 3155' (-1200)

DST No. 1 Toronto/Lansing
 Interval: 3143'-3210'
 Times: 30-50-60-90
 IFF: tool slid 15' with 1" blow, died in 1 minute, surface blow at 5 min., mark bldg. to 1 1/4"
 ISIP: no return
 FFP: weak surface blow at 15 min. mark bldg. to 1 1/4"
 F/SIP: no return
 Recovery: 2' FO; 15' O&WCM (20c, 30w, 50m); 62' WCM w/roll spoils (20w, 80m)
 FP: 33-39/40-50 SIP: 1117-1077
 HP: 1529-1450 BHT: 95 deg. F

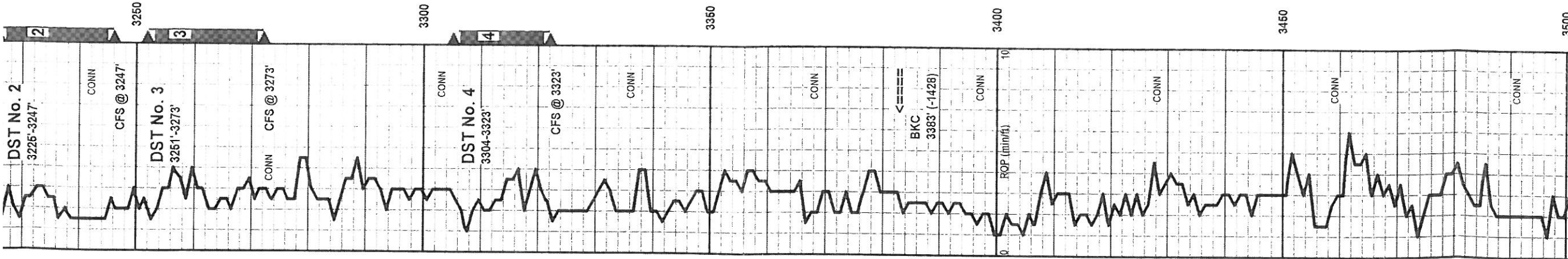
DST No. 2 Lansing 70' Zone
 Interval: 3225'-3247'
 Times: 30-50-60-90
 IFF: tool slid 10'; fair blow bldg. to B.O.B. in 8 minutes
 ISIP: return blow built to 3 1/2 inches
 FFP: B.O.B. in 10 minutes
 F/SIP: return blow built to 9 inches
 Recovery: 434' GIP; 186' GCO (30g, 70o), 252' GM&WCO (10g, 10m, 20w, 60o); 62' GO&MCW (10g, 10c, 10m, 70w); oil gravity 37 deg.; chl. of water was 35k
 FP: 37-101/107-209 SIP: 1144-1128
 HP: 1534-1500 BHT: 99 deg. F

40' spl - Ls: lt gray, tan, med brn cryptoxln and offwhite, tan mic-vfxln dense; Sh: strong influx red-brn and mottled red-gray shaly Ls

7:00 AM at 3247' on 10-12-2011

MudCo Mud Check at 3247'

9:50 AM on 10-12-2011
 wt vis vl pH chl
 8.8 46 5.2 11.0 900
 PV YP Gels lcm solids



47' spl - Sh: sl influx black carbon, Ls: predom. tan, lt gray cryptoxin; lesser offwhite mic-vfxln dense

CFS 3247' spls - Ls: tan, lt brn oolitic with poor to fair inter-oolitic por., common spar matrix, with fair to good odor, sl pungent, lt brn stain, sl show fo on break, occ offwhite vi-cryptoxin with patchy stain, offwhite micxln subchaly to chalky at base

60' spl - Irashy; Ls: tan, lt gray, lt brn cryptoxin; Sh: vc gray, red-brn

70' spl - Ls: good influx tan, lt brn cryptoxin and offwhite, tan mic-vfxln dense, NVP, N.S.

CFS 3273' 20' spl - Ls: flood offwhite mic-vfxln dense, subchaly to occ chalky, occ tan mic-vfxln with spotty ppt edge stain, occ partially oolitic with coarse sec. calcite xtals with spotty to even stain, trace fo on break, poss. lt odor; 45' spl - Ls: very predom. dense subchaly to chalky and var. cryptoxin dense, N.S.; some lt gray-green and med gray shale

90' spl - Sh: med to dark gray, sl influx black carbon; Ls: var. dense AA with sl increase med to dark brn cryptoxin to granular; sl influx mottled lt brn chert

3300' spl - Ls: influx med to dark gray vi-cryptoxin, NVP; some granular with poor to NVP; occ dark brn chert

10' spl - Ls: flood var. gray AA; med-dark brn vi-cryptoxin; some granular, strong influx tan, offwhite mic-vfxln dense; scatt. tan, lt brn, dark gray opq chert

20' spl - Ls: var. dense with incr. chert AA, Sh: lt-med gray

CFS 3323' 20' spl - Ls: several chips tan cryptoxin with spotty ppt stain in isolated tiny vug/ppt por., sl sfo on break, trace sg, even fluor., ft to no odor, 1-2 chips fr-med gran. with fair-good inter-particle por., ppt stain, sl sfo on break

40' spl - Sh: med to dark gray, gray-green, some red-brn, trace mottled gray/red; Ls: tan, offwhite mic-vfxln dense; sl mottled tan granular with offwhite micxln matrix, N.S.

50' spl - Ls: various tan, lt brn, lt gray predom. cryptoxin; offwhite micxln subchaly to occ chalky; trace tan/offwhite with vug. por. with spotty stain, no odor (looks like 160' show)

60' spl - Sh: sl influx med to dark gray, some black; very predom. Ls: tan, lt brn cryptoxin and offwhite, tan mic-vfxln dense, subchaly to occ chalky; occ dark brn cryptoxin

70' spl - Ls: tan, lt-med brn, some lt gray vi-cryptoxin, sl mottled IP

80' spl - Ls: var. cryptoxin AA; persistent offwhite mic-vfxln dense, subchaly IP

90' spl - minor % med to dark gray shale; Ls: mix AA with more med brn and gray cryptoxin

3400' spl - Ls: tan, lt-med brn, lt gray cryptoxin to sl mottled granular IP, NVP; occ yellow tinted Ls; Sh: sl incr red, red-brn, lt gray

10' spl - incr. mottled tan/brn/gray granular Ls with red-brn and gray-green shales

20' spl - Sh: red-brn, washes red, gray-green, trace yellow; various dense Ls's AA; occ mottled red-brn granular Ls

30' spl - Ls: incr. mottled red-brn granular with common Sh: red, red-brn, gray, gray-green

40' spl - Sh: incr. red-brn (washes red) with inter-bedded tan, gray, offwhite Ls; fossilif. IP, N.S.

50' spl - Ls: offwhite mic-vfxln and tan, lt gray vi-cryptoxin; Sh: vc gray, red-brn, red, some black, washes red

60' spl - very shaly AA with trace bryozoan fossil fragments; Ls: offwhite, tan dense, subchaly IP

70' spl - Sh: abund. vc gray and red-brn (washes red); Ls: var. dense AA with some mottled pink to orange vi-cryptoxin

80' spl - var. shales and Ls' sAA; some offwhite, lt gray mic-vfxln silty dolomite

90' spl - mixed and mottled shales with Ls's and dense silty dolomite AA; some dolomitic siltst and maroon shale

3500' spl - mix AA with influx tan, brn cryptoxin Ls and trace mottled yellow/gray dense Ls

10' spl - very shaly mix AA

20' spl - Ls: more mottled yellow/tan and pink/tan with red and red-brn siltst

7:00 AM at 3247' on 10-12-2011
MudCo Mud Check at 3247'
9:50 AM on 10-12-2011
WT VIS Wl pH chl
8.8 46 5.2 11.0 900
PV YP Gels lcm solids
10 19 8/11 # 3.6%

7:00 AM at 3273' on 10-13-2011

DST No. 3 Lansing 90' and 100' zones
Interval: 3251'-3273'
Times: 30-60:30-60
IFP: weak surface blow bldg. to 3/4 inch
FFP: no return
FSIP: no return
Recovery: 1' oil; 5' mud
FP: 14-15/16-16 SIP: 881-478
HP: 1562-1578 BHT: 92 deg. F

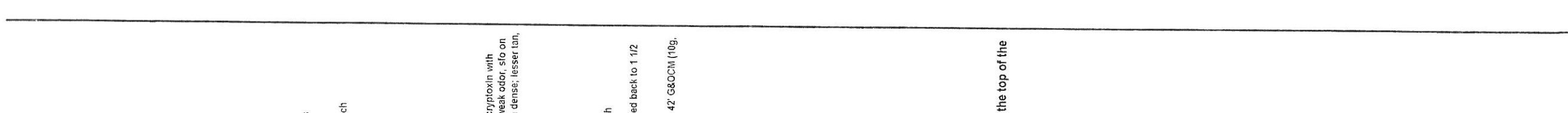
CFS 3323' 45' spl - Ls: fair influx tan cryptoxin with fair-good vug. por.; patchy brn stain, weak odor, sfo on break, predom. tan, offwhite mic-vfxln dense; lesser tan, lt brn cryptoxin, NVP

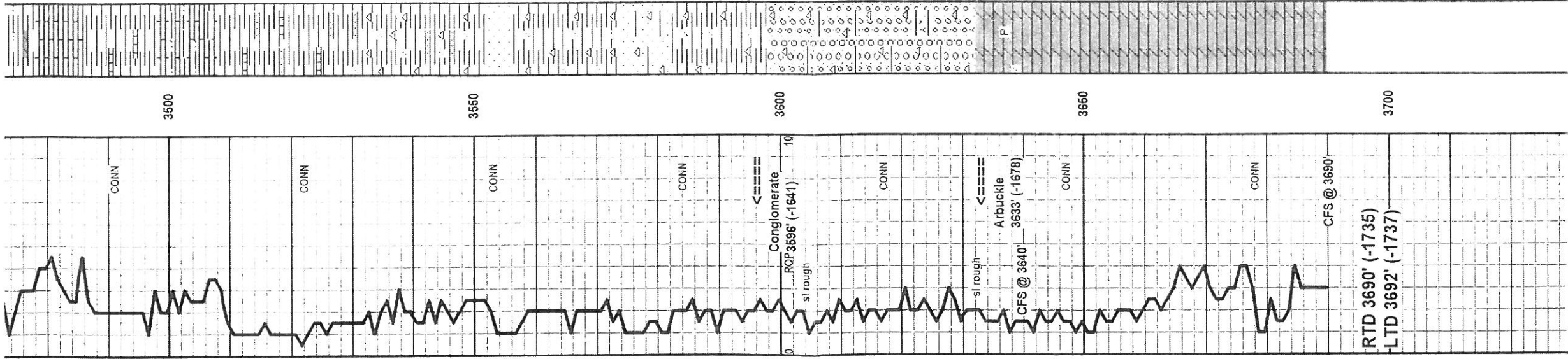
DST No. 4 Lansing 160' Zone
Interval: 3304'-3323'
Times: 30-45:90-90
IFP: weak surface blow built to 1/8 inch
ISIP: no return
FFP: surface blow built to 3 inches, dled back to 1 1/2 inches
FSIP: no return
Recovery: 50' GIP; 97' CGO (20g, 80o); 42' G&OCM (10g, 30o, 60m); oil grav. 30 deg.
FP: 15-31/32-68 SIP: 1193-1167
HP: 1585-1553 BHT: 98 deg. F

BKC 3383' (-1428)

samples wash red from 3400' to the top of the Atbuckle

7:00 AM at 3444' on 10-14-2011





90' spl - mixed and mottled shales with Ls and dense silty dolomite AA; some dolomitic siltst and maroon shale

3500' spl - mix AA with influx tan, brn cryptoxin Ls and trace mottled yellow/gray dense Ls

10' spl - very shaly mix AA

20' spl - Ls: more mottled yellow/tan and pink/tan with red and red-brn siltst

30' spl - Ls: various dense, mottled and granular IP with multi-colored shales and siltst

40' spl - Sh: multicolored, washes red, with pink and red tinted Ls; some offwhite fn-med grnd Sst, N.S

50' spl - flood Sh: red, soft with good influx Chert: offwhite, tan, yellow, red, pink opq; some red sandy shale and shaly lg Sst; fairly common clear, orange, red fn-coarse qtz grains in spl tray

60' spl - shaly, sandy and cherty mix AA; common loose qtz grains

70' spl - very shaly mix AA; some multi-colored oolitic chert with moldic por.; loose fn-coarse qtz grains

80' spl - very shaly mix AA

90' spl - AA; trace offwhite sl dolomitic chert with good vug, por., N.S.

3600' spl - very shaly and cherty mix; scatt. med to coarse orange qtz grains

10' spl - Sh: predom. red, red-brn (washes red) with various cherts and scatt. lt gray coarse to very coarse qtz grains

20'-40' spls are still flooded with red, red-brn shale with common cherts and loose qtz grains

CFS 3640' spls - very predom. very shaly, cherty and sandy mix with trace Dolo: lt gray fn-med/bn with some interxln and vug. por., some NVP, N.S.; incr. dolomite % in 45" spl

Dolo: lt gray, tan fn-med xln with some por. AA; some vf-cryptoxin with NVP, occ sandy, rarely pyritic, N.S.

Dolo: lt gray, tan fn-med xln and vf-cryptoxin, some por. AA; some offwhite mic-vfxln dense

Dolo: lt gray, tan AA, predom. NVP, occ tan sucrosic, N.S

Dolo: lt gray, tan vf-cryptoxin and some mic-vfxln dense

Dolo: mix AA with influx med brn fn-med xln with interxln and vug. por.

MudCo Mud Check at 3618'
 10:46 AM on 10-14-2011
 wt vis wl pH chl
 9.2 52 7.2 11.0 1600
 PV YP Gels lcm solids
 15 25 11/32 1# 6.4%

Conglomerate 3596' (-1641)

Arbuckle 3633' (-1678)

RTD reached at 6:06 PM on 10-14-2011
 CFS 60" - short trip - CTCH 1 1/4 hours - drop survey - TOFL

Because of the positive results of DST No's 2 and 4, 4 1/2" casing was set for further testing through perforations.

Respectfully submitted,
Wesley D. Hansen
 Wesley D. Hansen
 Petroleum Geologist
 Kansas License No. 418