



Woolsey Operating Company, LLC

Scale 1:240 (5"=100') Imperial

Measured Depth Log

Well Name: Nusser #2
Location: Section 11 Township 35 South - Range 11 West
License Number: 15-007-23750-00-00
Spud Date: September 15, 2011
Surface Coordinates: 2310' FSL, 2230' FWL or NE1/4 NE 1/4 SW1/4
Bottom Hole Coordinates: Verticle Hole
Ground Elevation (ft): 1393' **K.B. Elevation (ft):** 1404'
Logged Interval (ft): 4000' **To:** 5568' **Total Depth (ft):** 5568'
Formation: Kansas City Group ----> Simpson Group
Type of Drilling Fluid: Chemical Mud Displaced at 3268'
Region: Barber County, KS
Drilling Completed:

Printed by WellSight Log Viewer from WellSight Systems 1-800-447-1534 www.WellSight.com

OPERATOR

Company: Woolsey Operating Company,LLC
Address: 125 N. Market, Suite 1000
Wichita, KS 67202

GEOLOGIST

Name: Bill Klaver
Company: Woolsey Operating Co. LLC
Address: 125 N. Market, Wichita Kansas, 67202

COMMENTS

Surface Casing: Ran 5 joints of 10 3/4" X 32.75#/ft surface casing to 225' KB (tally 212') with 225 sx Class A, 2% gel, 3% cc. Cement did circulate.

Production Casing: 5 1/2" X 16.5#/ft

Deviation Surveys: 1/2 at 228', 1/2 at 1205', 3/4 at 1703', 3/4 at 2328', 1/2 at 2795', 3/4 at 3267', 3/4 at 3791', 1 1/4 at 4294', 1 at 4864', 1 at 5568'.

Pipe Strap @ 4864', strap: 4880.21', board: 4889.28', strap 9.07' short. A 9' error was found on the board. No correction was made.

Duke Drilling Rig 10 Bit Record:

#1 14 3/4" HTC RR in at 0' out at 228', 228' in 2.75 hours

#2 7 7/8 Varel HE 21 in at 228', out at 5340' in 162 hours, average 32.9' per hour drilling.

Gas Detector: Woolsey Operating Co. Gas Trailer #2

Mud System: Mud-Co. Brad Bortz, Engineer

Open Hole Tests: Trilobite, Leal Cason Tester

OH Logs: Superior Well Service: Dual Induction Laterolog w/SP, CNL-FDC w/PE, Gamma Ray and Caliper.

House Geologist: Brian Wilhite

DSTs

DST #1 Mississippi, 4742'-4864'. 30"-60"-60"-120". Strong blow BOB 10 seconds into IFP, Strong blow GTS 12 minutes into FFP, TSTM. Recovered: 4674' GIP, 50' SGCM (2% Gas, 98% Mud). IHP 2399, IFP 76-82, ISIP 1313, FFP 35-41, FSIP 999, FHP 2308. BHT 127 degrees.

CREWS

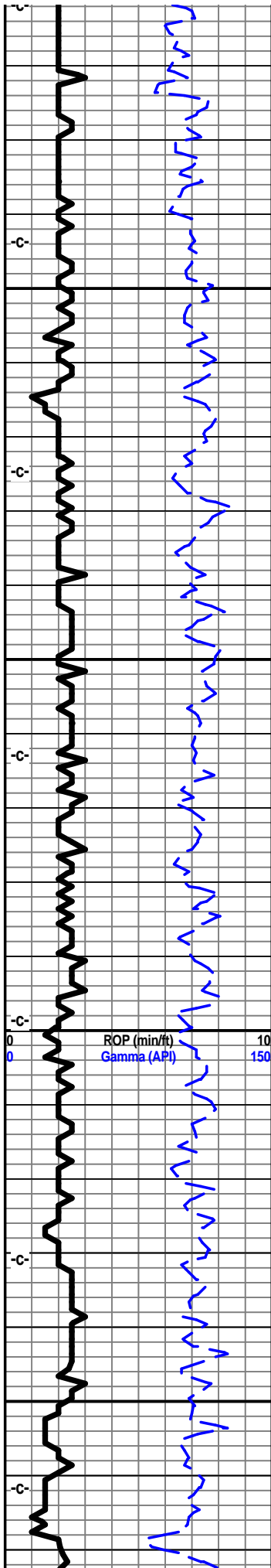
Scott Edwards, Toolpusher

Alex Ordonez, Days

Colby Crawford, Evening

Chad Hallmark, Morning

Ron Burns, Relief

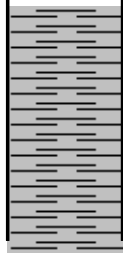


4100

4150

4200

4250



7 am Progress:

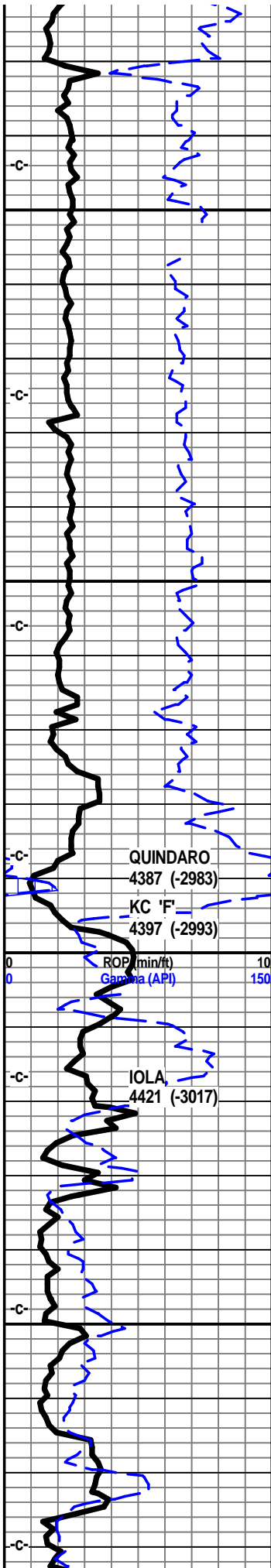
- September 14, 2011 Rain, no move
- September 15, 2011 MIRT/Spud
- September 16, 2011 WOC
- September 17, 2011 Drilling at 1142'
- September 18, 2011 Drilling at 2030'
- September 19, 2011 Drilling at 2770'
- September 20, 2011 Drilling at 3400'
- September 21, 2011 Drilling at 4110'
- September 22, 2011 Drilling at 4624'
- September 23, 2011 DST #1 at 4864'
- September 24, 2011 Drilling at 5044'
- September 25, 2011 Drilling at 5316'
- September 26, 2011 CFS at 5558'

E-Log Tops:

- Herrington 1917 (-513)
- Onaga 2786 (-1382)
- Waubunsee 2844 (-1440)
- LeCompton 3615 (-2211)
- Kanwaka 3640 (-2236)
- Elgin Sand 3691 (-2287)
- Heebner 3833 (-2429)
- Toronto 3846 (-2442)
- Douglas Grp 3872 (-2468)
- Douglas Shl 3916 (-2512)
- Quindaro 4382 (-2978)
- Kansas City 'F' 4393 (-2989)
- Kansas City 'G' 4416 (-3012)
- Stark 4540 (-3136)
- Swope 4551 (-3147)
- Hushpuckney 4572 (-3168)
- Hertha 4579 (-3175)
- B/Kansas City 4621 (-3217)
- Pawnee 4723 (-3319)
- Cherokee Grp 4770 (-3366)
- Cherokee Sd 4798 (-3394)
- Mississippi 4815 (-3411)
- C3 4822 (-3418)
- C2A 4832 (-3428)
- C2 4860 (-3456)
- C1 4999 (-3595)
- Osage 5054 (-3650)
- Northview Shl 5056 (-3652)
- Compton 5061 (-3657)
- Kinderhook 5087 (-3683)
- Woodford 5154 (-3760)
- Misener Sd 5186 (-3782)
- Viola 5212 (-3808)
- Simpson Grp 5341 (-3937)
- Wilcox 5365 (-3961)
- McLish Shl 5443 (-4039)

0 TG 200

Mud-Co. 4233'
wt. 9.3+ vis. 57
wl. 10.2 chl. 3000

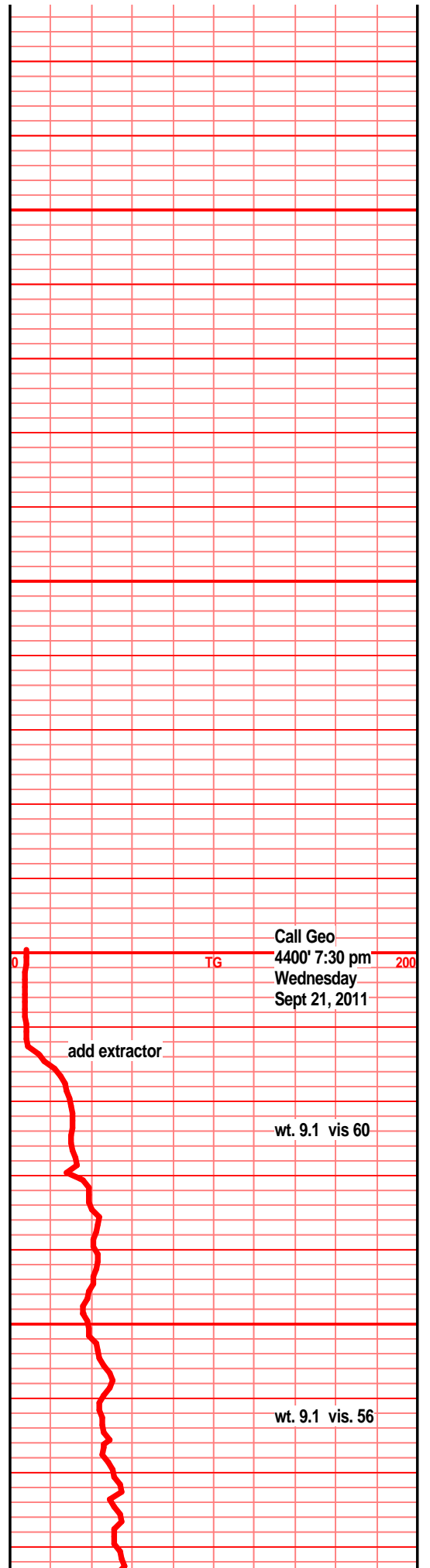
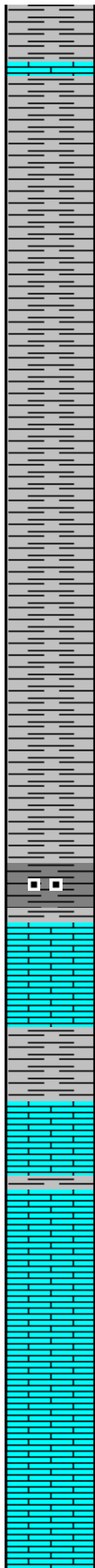


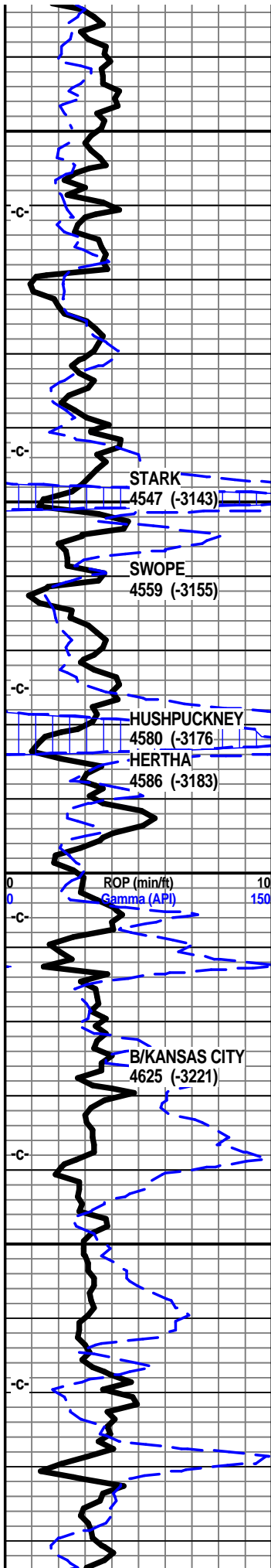
4300

4350

4400

4450





4500

4550

4600

4650



mucho blk grsy, wxy, carb shl in spl, lst off wht tan f sli med xln blkly flky sub chlky tr foss frags,

lst off wht lt gry f xln gran flky sub chlky, foss frags, soft, foss frags, micro ool, pelletal

shl gry, gry-blk, lst tan off wht lt gry, f xln blkly ang soft sub chlky pcs, tr foss frags, calc xln fill

lst gry tan lt brn f vf xln dns hrd flky, tr sub chlky, xln calc fill, tr foss frags, tr chrt tan lt brn

lst crm tan lt brn f vf xln dns, blkly soft, flky sub chlky, foss frags, shls, gry, drk gry soft, calc,

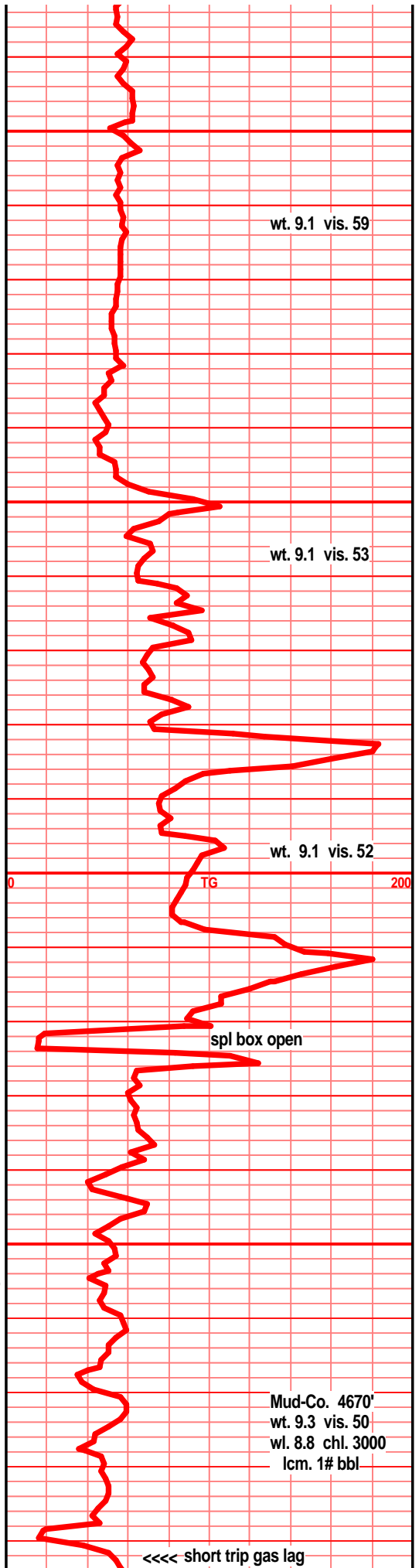
shl gry dkr gry soft calc, lst tan gry f vf xln gran soft sub chky arg, dns tr foss frags, tr chrt wht tan opa

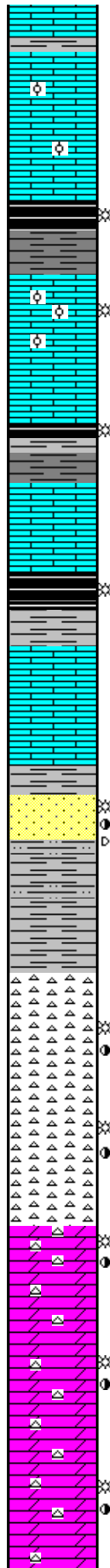
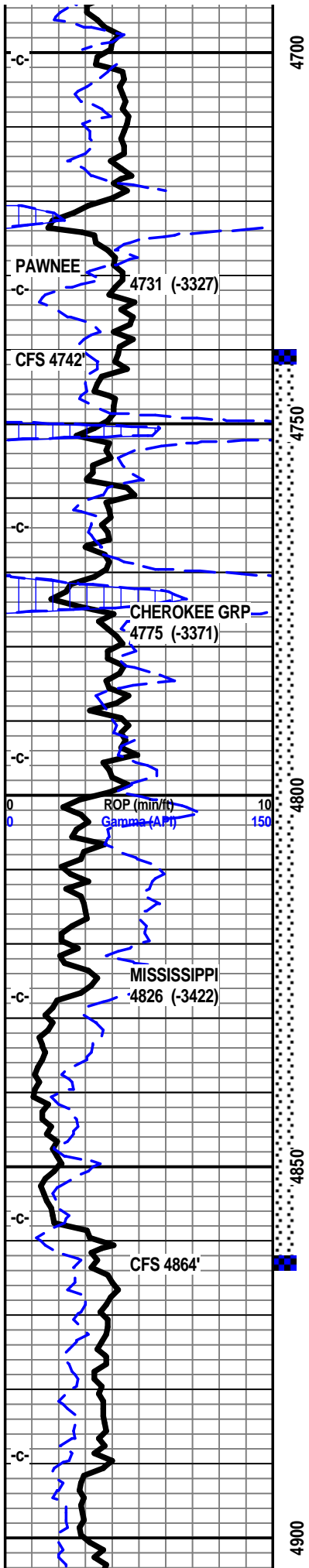
shl gry green silty gritty, lst tan buff lt brn f xln blkly ang hrd dns sub chlky calc xln fill, tr micro foss

shl gry brn, lst tan buff crm f vf xln blkly dns, sub chlky, calc xln fill, tr micro foss calc xln fill

lst tan buff crm f xln blkly dns flky tr sub chlky foss frags calc xln fill,

shl gry drk gry tr blk, silty gritty calc, lst tan buff brn vf xln dns hrd calc fill, foss frags





1st buff tan crm t vf xln dky rky sub cnky ross frags micro ool, calc xln fill, tr chrt wth tan shrp frsh opaq

1st buff tan lt brn f sli med xln blk ang sub chlky calc xln fill, inter xln por, foss frags, ool, pelletal,

1st buff tan gry/brn f xln gran blk sub chlky foss frags, foss ool/pelletal, calc xln fill

shl gry drk gry blk, semi carb, silty gritty gran in prt,

1st crm tan off wht f vf xln blk ang pcs, sub chlky, foss frags, foss ool, crsly in prt, foss pelletal, hvy calc xln fill, no vis por, spls wsh white, VSS gas bubs

1st crm buff tan f xln blk sub chlky foss frags, foss ool, crsly in prt, hvy calc xln fill, tr chrt wht shrp frsh foss

shl gry med gry calc silty gritty, shl blk carb wxy, 1st tan brn vf xln dns hrd foss arg, silty, pyritic

1st crm buff lt gry f vf xln dns hrd blk sub chlky, tr micro foss frags, calc xln fill, tr chrt wht shrp frsh

shl gry blk, med gry, blk carb, wxy grsy, 1st aa in spl

1st buff gry tan f vf xln dns gran arg, silty, sub chlky, shls gry, gry/brn silty gritty calc

1st tan buff brn vf xln dns hrd chlky gran gritty shl gry brn silty sndy gritty soft

sst tan ddrk brn clstrs, vf grnd, sub ang grns, w/srtd, w/cem, calc cem, hrd blk ang clstrs, sub fria in prt, drk flky stain, gas bubs, dull UV, nodor

shl gry green silty sndy, sst lt tan wht/green tint, f grnd, sub ang grns, w/srtd clay fill, calc fill, sli stain, gas nodor

chrt wht lt gry, lt tan, tr smokey, mstly frsh, shrp, opaq, transl, vis frac por, tr sli weath edge, lt stain, gas bubs nodor

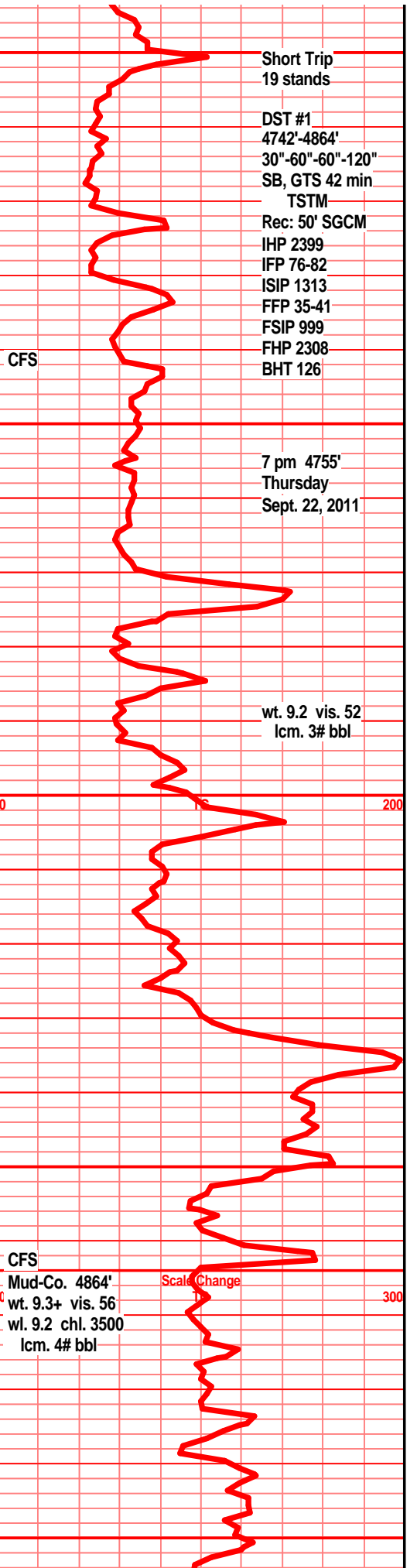
chrt wht tan lt gry, tr smokey, shrp, frsh, opaq, transl, frac por, gas bubs/stain along fracs, tr weath trip text edge, pp, moldic por, tan/brn stain, SFO, gas bubs, dull UV, sli odor, chrt wht/brn mott, tr spongy text, weath/trip text edge, pp/moldic por, brn stain, gas bubs, SSFO

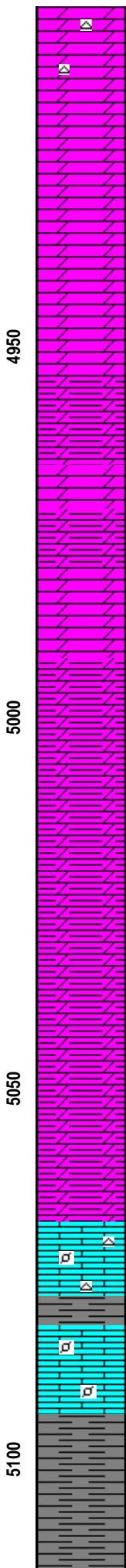
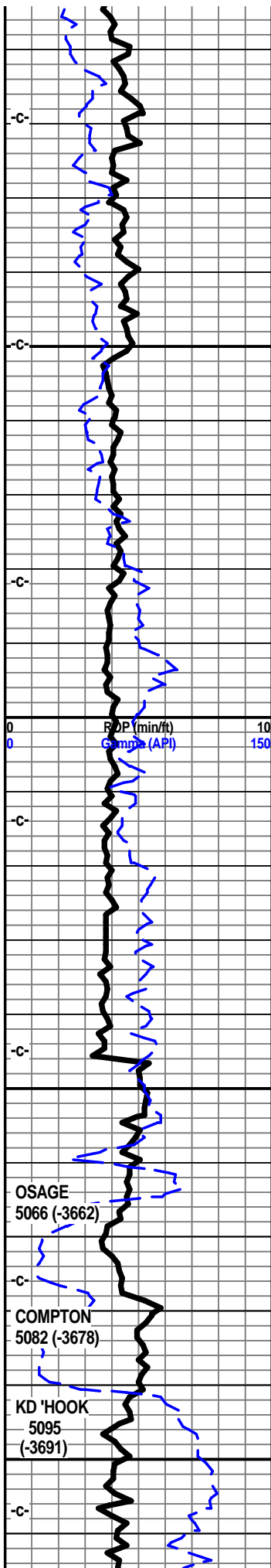
chrt wht tan gry/lt smokey, incr frsh shrp blk opaq transl w/depth, frac por, tr weath trip text por aa, sli odor, tan/brn stain, tr gas bubs, odor, dolo chrty dolo wht lt tan f vf xln gritty sndy text, tr glau, edge stain, gas bubs, SSFO, sli odor

dolo calc dolo, lt crm off wht tan, lt green tint, f vf xln blk dns hrd gran sndy, snd inclu, tr glau, tr brn stain tr gas bubs, chrt wht shrp opaq, transl

dolo crm off wht, grn tint, f vf xln dns hrd blk ang gritty, sndy text, chrty, chrty wht shrp frsh, tr stain tr gas bub

dolo crm tan lt green tint, f vf xln dns hrd blk tr silic text, tr sndy text, glau, chrty, chrt wht shrp frsh opaq, stain, lt tan/brn stain, v faint odor/brkn??





dolo, calc dolostn in prt, f vf xln blkly ang dns hrd, sub chlky in prt, tr glau, tr sndy text, chrty in prt, chrt wht shrp frsh opa, tr lt tan/brn stain,

dolo crm lt gry f vf xln dns blkly ang silic text, sndy gritty in prt, glau in prt, chrty, chrt wht shrp frsh

dolo, calc dolo, tan crm gry/green tint, f vf xln dns hrd blkly, chrty chrt wht lt gry shrp frsh

lst crm tan lt gry f vf xln dns hrd blkly, silic text in prt, chrty, chrt wht shrp frsh opa

dolo calc dolo, crm tan lt gry f vf xln blkly ang hrd dns, tr silic text, sndy gritty text, in prt, tr glau, bec silty arg in prt

dolo calc dolo f vf xln gran gritty incr gry silty arg, incr gry med gry silty dolo shls

dolo calc dolo, gry bec med gry vf xln blkly gran gritty arg silty, shls gry med gry dolo calc gritty

dolo crm gry med gry f vf xln gran silty arg, much chrt wht shrp frsh blkly opa, poor sample

mixed trash/garbage, spls appear as C2A chrt, ?

dolo silty gritty shley dolo, drk tan gry, f vf xln blkly dns arg, much chrt wht shrp frsh opa, ?

dolo calc silty dolo, vf xln gran gritty arg silty, pyritic,

dolo, calc dolo, vf xln silty gritty arg pyritic, chrt gry smokey shrp frsh opa, abun gry silty calc shl, silty gritty

much recirc spls, dolo calc dolo, lt gry gry tr med gry, f vf xln blkly ang pcs, silty gritty arg, chrt gry smokey shrp frsh

daylight tour spls>>>abun gry med gry dolo silty gritty shl, dolo calc dolo, vf xln gritty silty arg

dolo/calc dolo shls, gry med gry silty gritty, pyritic, gran dns hrd

shl gry, drk gry, silty pyritic, dolo, gran gritty, shl arg, f vf lxn dns hrd arg

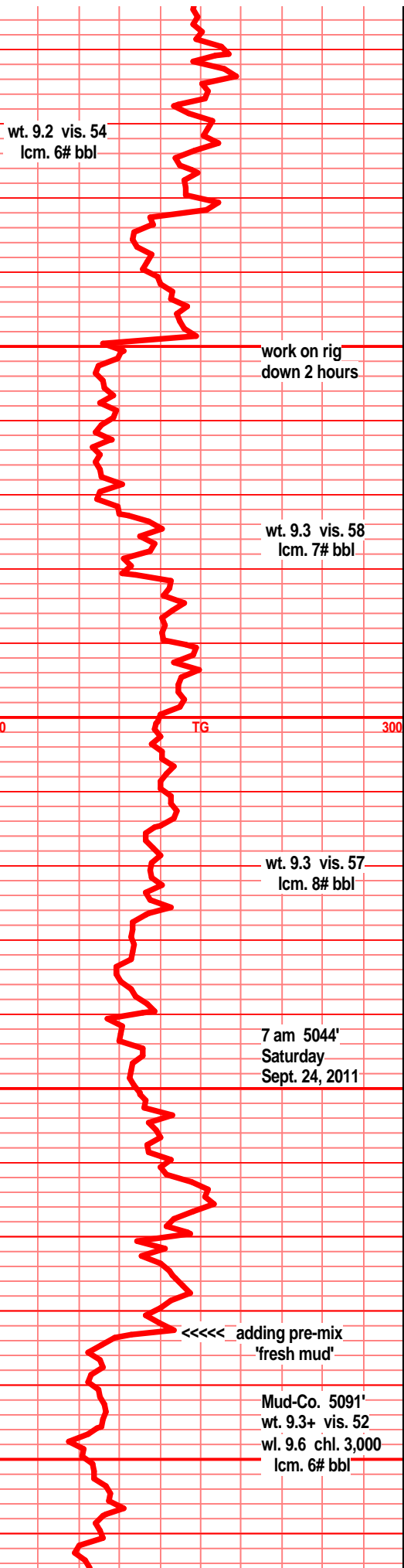
lst wht f sli med xln blkly flky ang, foss frags, micro ool/pelletal, chrty in prt, chrt wht shrp frsh opa transl

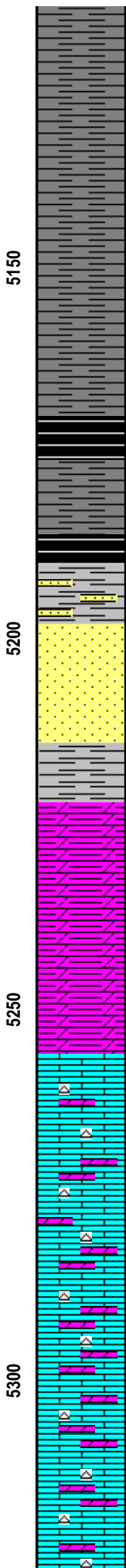
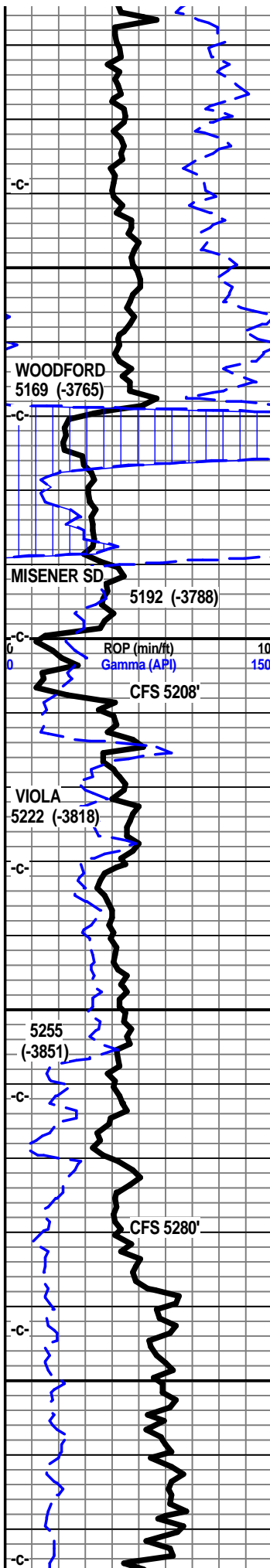
shl drk gry/green, lst wth bright wht f sli med xln blkly ang flky, tr sub chlky text, tr glau, chrty in prt, chrt wht shrp

lst wht off wht f xln bky ang dns sub chlky, foss frags, pelletal, tr glau,

shl gry, med gry, silty gritty, pyritic bands, soft gran in prt

shl gry drk gry blk, silty gritty, pyitic bands,





shl drk gry blk, brn/blk, silty gritty, pyritic in prt

shl drk gry blk, blk semi carb text, silty gritty, pyritic in prt soft

shll gry drk gry blk, silty gritty ptey, tr gas bubs, pyritic

shl gry dkr gry, red/brn blk, silty flky splintery pcs, tr gas bubs, tr snd grn inclu

shl gry med gry, blk, tr carb inclu, silty gritty, v fnly sndy in prt tr gas bubs

shl drk gry, red/brn, reddish blk, blk, silty gritty, organic, semi carb, pyritic/cu inclu, soft, spitting gas

shl drk gry blk, drk brn/red/blk, silty gran gritty pcs, pyritic/cu fill, abun gas bubs, "spitting" gas in spl tray

shl gry drk gry blk, silty, sst wht clr clstrs, f grnd, ang grns, w/srtd, w/cem, pyritic, clay/mineral fill, tr gas bubs

sst clr, wht clstrs (yellw grn inclu), f grnd sb rded, msly rded grns, w/srtd, fair cem, calc cem, limy in prt, sub fria to tite, mineral fill, blk mineral fill, clay clast fill, foss frags, tr gas bubs 1-2 pcs

shl gry med gry soft mushy, silty gritty, pyritic, abun gas bubs

shl gry med gry silty gritty, soft, gran, pyritic

dolo, shly dolo stn, brn/red, silty, gritty, gran, soft, shls red brn, brn blk, silty, gritty pyritic, silty semi carb text, abun gas bubs, shl gry soft silty gritty gas

shl gry lt med gry silty soft gritty, lst gry wht marl, soft mushy f xln gran,

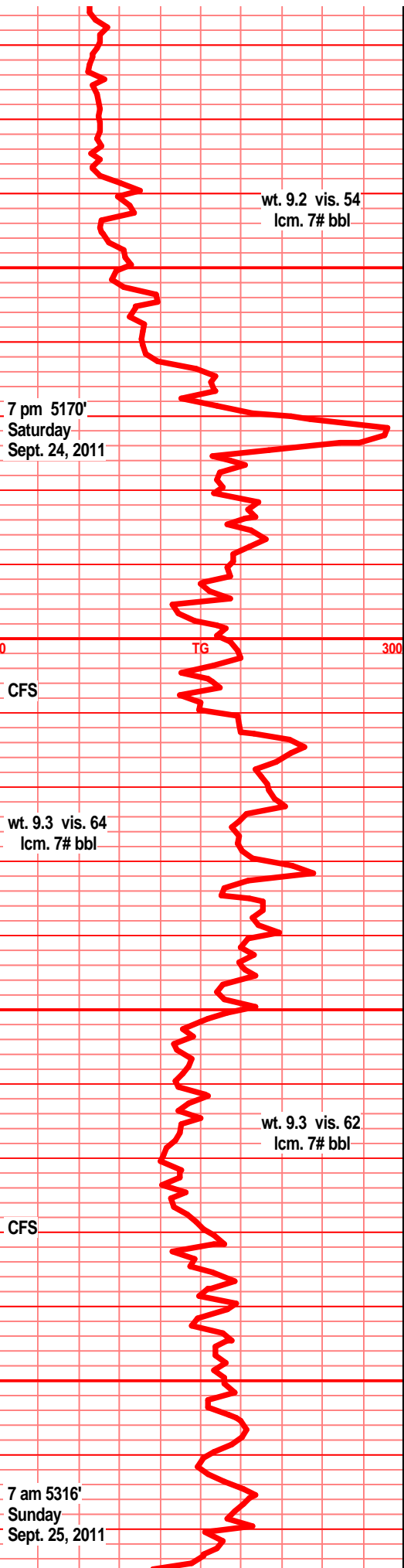
shl gry lt gry soft silty gran, shl brn gry silty gritty soft, abun gas bubs

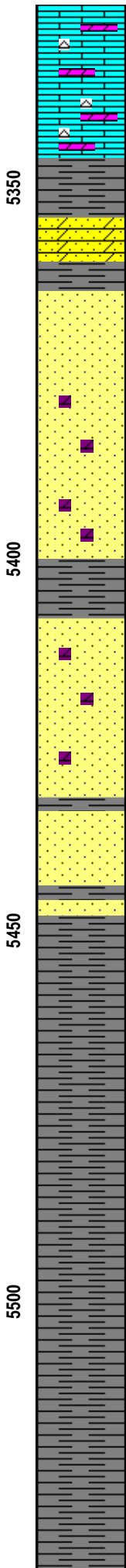
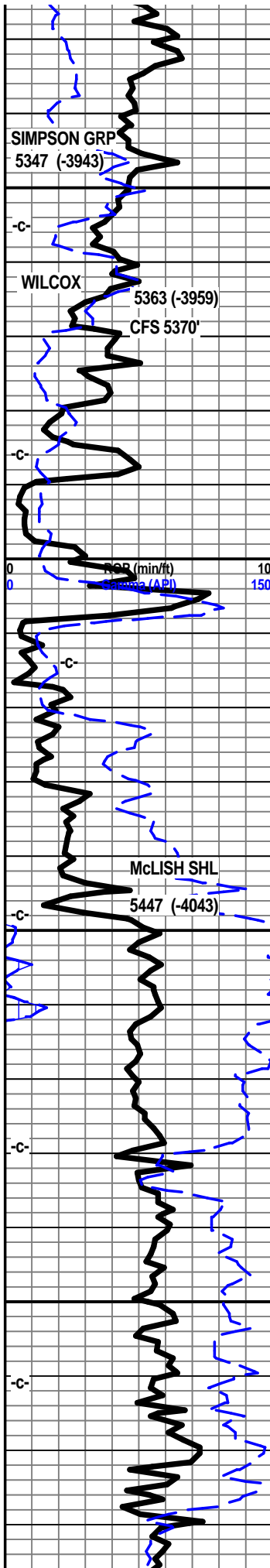
lst wht, off wht, wht/gry mott, f sli med xln, blk, ang, sub chky in prt, inter xln por, foss frags, pelletal in prt, pyritic in prt, chrty in prt, chrt wht shrp frsh foss, tr dolo lt tan, lt brn, f vf xln dns gran, tr suc text, inter xln por, tr chrty, chrt dull tan shrp frsh opa q foss

lst wht, off wht, wht lt gry mott, f sli med xln, sub chky, flky, inter xln por, chrty in prt, chrt wht shrp opa q foss, dolo, tan lt brn vf xln suc text in prt, arg, chrty, chrt dull tan shrp frsh foss

lst wht off wht lt gry mott f sli med xn flky sub chky tr foss frags, pyritic fill, inter xln por, chrty in prt, chrt wht shrp frsh, tr dolo wht tan lt brn f vf xln dns, hrd, blk, ang pcs, chrty in prt, chrt dull tan lt brn shrp frsh opa q foss

lst wht tan lt gry mott f med xln blk ang dns hrd, flky, sub chky tr foss frags, pyritic fill chrty in prt, chrt wht shrp frsh, dolo tan lt tan/gry brn f vf xln dns hrd bky pcs, gran, tr suc text, chrty, chrt dull tan shrp frsh foss opa q





lst dolo tan drk tan brn f vf xln, dns hrd blkly ang chrtly, much chrt brn shrp frsh opa

dolo tan lt brn f vf xln dns hrd blkly, tr sucr text, tr foss frags, v chrtly, chrt tan dull tan/brn shrp frsh blk opa, shl drk gry green, deep teal green silty pyritic

shl gry drk gry teal blue green, sst gry/green f grnd, sub ang grns, prly srted, w/cem, sub fria, tite, calc fill, pyritic dolomitic NS

sst clr lt tan clstrs, f grnd, sub ang/sub rded grns, w/srted, fria to sub fria, fairly cem, silic cem, min fill, drk brn oil smears, nodor, sst tan clstrs f grnd sub rded grns, prly srted, prly cem, fria, gran, min fill, tr pyritic, NS

sst wht clr clstrs, f grnd, sug ang/sub rded grns, w/srted, pr/fair cem, silic cem, sub fria to tite, min fill, tr grn clsy/shl fill

sst wht lt tan clstrs, f grnd sub rded, tr ang grns, w/srted, prly cem, sub fria to fria, gd inter grn por, tr glau, tr min fill, mstly sort crmbly clstrs

shl gry teal blue green silty snd grn inclu, sst aa

sst wht, off wht tr lt tan clstrs, f vf grnd, sub ang/sub rded grns, w/srted, fair to well cem, sub fria to tite blkly ang clstrs, xln dolo fill, min fill, pyritic in prt, tr clay fill NS

sst wht off wht clstrs, f vf grnd, sub ang to rded grns, w/srted, sub fria to tite, dolo xln fill/cem, min fill, pyritic in prt, tr glau, tr clay fill

sst wht tr clr clstrs, f tr vf grnd, sub rded/rded grns, w/srted, sub fria, mstly semi fria hrd blkly clstrs, w/cem, dolo xln fill/cem, min specks, tr clay fill, tr pyritic,

shl drk gry/green, dark teal/blue green, silty, pyritic, wxy grsy, snd grn inclu

shl drk gry/green, dark teal green, silty, gritty, sndy in prt, glau, snd grn inclu, pyritic in some

shl drk gry/green, dark teal green, wxy slick, silty, gritty in prt, sndy in prt, snd gr inclu, pyritic bands, tr glau

shl drk gry green, silty slick gritty

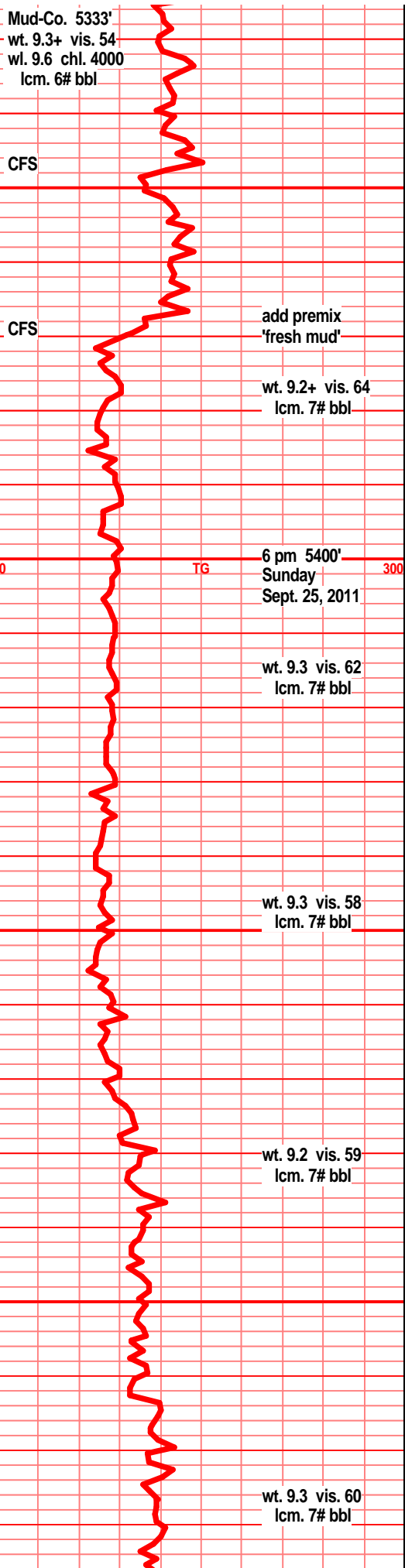
shl gry drk gry green, teal green, silty, pyritic, snd grn inclu,

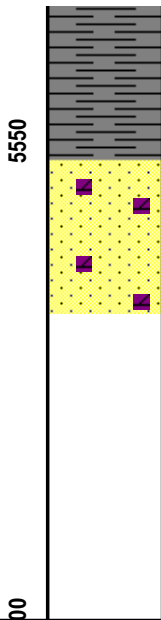
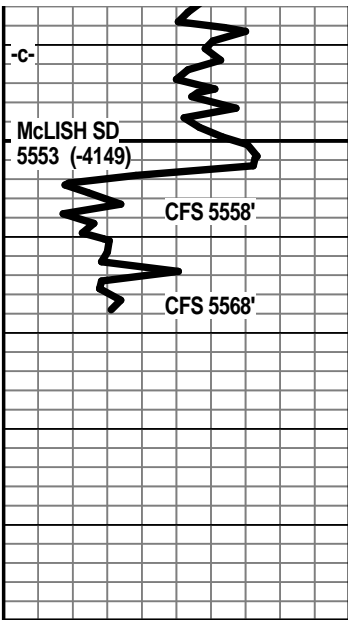
shl drk gry green, drk teal green, silty, pyritic, wxy grsy

shl drk gry green, drk teal green, silty, pyritic bands, sndy gritty in prt, pyritic

shl drk gry green, drk teal green, silty, sndy, snd grn inclu

shl gry drk gry blk, drk gry green silty sndy in





prt

shl gry drk gry green, silty, gritty, sndy in prt, slick wxy grsy pyritic

sst lt gry clstrs, f vf grnd, sub ang grns, fair to prly srted, w/cem, fria to sub fria, mstly packed dns, silic cem, min fill, pyritic, flood of loose clr w/rded vfn snd grns in spl tray.

sst lt gry clstrs, tr clr, f grnd, sub ang grns, prly srted, w/cem, silic cem, min fill, pyritic, clay fill, abun loose grains

Woolsey Operating Co. LLC.
Nusser #2
2310' FSL, 2230' FWL
NE NE SW
11-T35S-R12W
Barber County, Kansas

