



TRILOBITE TESTING, INC.

DRILL STEM TEST REPORT

Cholla Production LLC.

3 2s 39w

7851 S. Elati St.
STE. 201 littleton Co.
80120
ATTN: Clayton Erickson

Zimelman #1-3

Job Ticket: 042936

DST#: 2

Test Start: 2011.11.17 @ 10:30:00

GENERAL INFORMATION:

Formation: **Cherokee**

Deviated: No Whipstock: ft (KB)

Time Tool Opened: 12:18:30

Time Test Ended: 16:34:30

Test Type: Conventional Bottom Hole (Reset)

Tester: Chuck Kreuzer Jr.

Unit No: 57

Interval: 4557.00 ft (KB) To 4581.00 ft (KB) (TVD)

Reference Elevations: 3130.00 ft (KB)

Total Depth: 4581.00 ft (KB) (TVD)

3125.00 ft (CF)

Hole Diameter: 7.88 inches Hole Condition: Fair

KB to GR/CF: 5.00 ft

Serial #: 8366 Inside

Press @ Run Depth: 20.91 psig @ 4558.00 ft (KB)

Capacity: 8000.00 psig

Start Date: 2011.11.17 End Date: 2011.11.17

Last Calib.: 2011.11.17

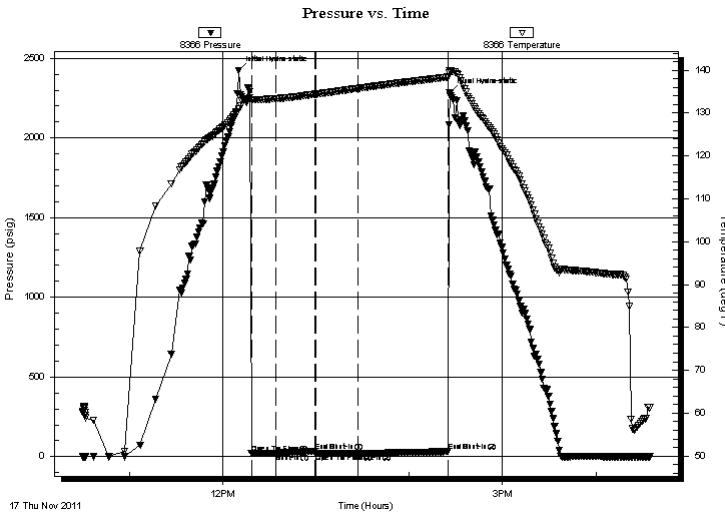
Start Time: 10:30:05 End Time: 16:34:29

Time On Btm: 2011.11.17 @ 12:10:30

Time Off Btm: 2011.11.17 @ 14:26:00

TEST COMMENT: IF: Weak blow, Died in 3 mins.
IS: No blow back over 30 mins.
FF: No blow over 20 mins.
FS: No blow back over 60 mins.

PRESSURE SUMMARY



Time (Min.)	Pressure (psig)	Temp (deg F)	Annotation
0	2424.41	130.98	Initial Hydro-static
8	19.49	133.15	Open To Flow (1)
24	21.87	133.37	Shut-In(1)
49	34.78	134.39	End Shut-In(1)
50	20.11	134.40	Open To Flow (2)
77	20.91	135.76	Shut-In(2)
135	32.63	138.39	End Shut-In(2)
136	2282.58	139.96	Final Hydro-static

Recovery

Length (ft)	Description	Volume (bbl)
5.00	mud with oil specs	0.02

* Recovery from multiple tests

Gas Rates

Choke (inches)	Pressure (psig)	Gas Rate (Mcf/d)



**TRILOBITE
TESTING, INC.**

DRILL STEM TEST REPORT

FLUID SUMMARY

Cholla Production LLC.

3 2s 39w

7851 S. Elati St.
STE. 201 littleton Co.
80120

Zimbelman #1-3

Job Ticket: 042936

DST#: 2

ATTN: Clayton Erickson

Test Start: 2011.11.17 @ 10:30:00

Mud and Cushion Information

Mud Type: Gel Chem

Cushion Type:

Oil API:

deg API

Mud Weight: 9.00 lb/gal

Cushion Length:

ft

Water Salinity:

ppm

Viscosity: 51.00 sec/qt

Cushion Volume:

bbbl

Water Loss: 7.99 in³

Gas Cushion Type:

Resistivity: ohm.m

Gas Cushion Pressure:

psig

Salinity: 1000.00 ppm

Filter Cake: 2.00 inches

Recovery Information

Recovery Table

Length ft	Description	Volume bbl
5.00	mud w ith oil specs	0.025

Total Length: 5.00 ft Total Volume: 0.025 bbl

Num Fluid Samples: 0

Num Gas Bombs: 0

Serial #:

Laboratory Name:

Laboratory Location:

Recovery Comments:

Serial #: 8366

Inside

Cholla Production LLC.

Zimbelman #1-3

DST Test Number: 2

