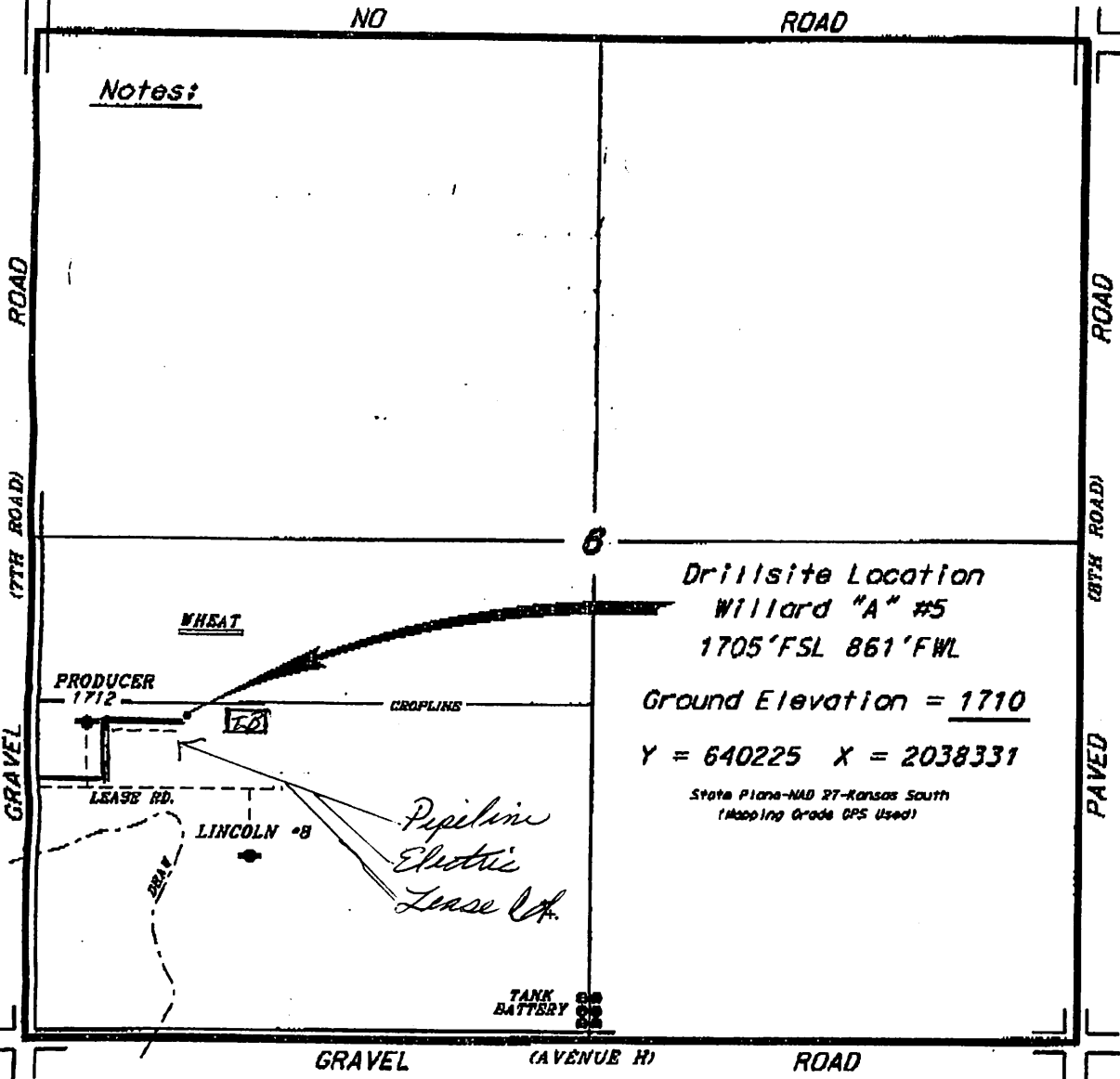


WILLARD LEASE
SW. 1/4, SECTION 6, T19S, R9W
RICE COUNTY, KANSAS

Notes:



Drillsite Location
Willard "A" #5
1705'FSL 861'FWL
Ground Elevation = 1710
Y = 640225 X = 2038331

State Plane-NAD 27-Kansas South
(Mapping Grade GPS Used)