

**SUPERIOR
Hays,
Kansas**

**COMPENSATED
DENSITY / NEUTRON
LOG**

Company TRANS PACIFIC OIL CORPORATION
Well JOHNSON "D" #1-6
Field
County NESS State KANSAS

Company TRANS PACIFIC OIL CORP.
Well JOHNSON "D" #1-6
Field
County NESS
State KANSAS

Location: API #: 15-135-25259
330' FSL & 330' FEL
SEC 6 TWP 17S RGE 26W
Permanent Datum GROUND LEVEL Elevation 2649
Log Measured From KELLY BUSHING 9' A.G.L.
Drilling Measured From KELLY BUSHING
Other Services
DIL
MICRO
Elevation
K.B. 2658
D.F.
G.L. 2649

Date	7-1-11
Run Number	ONE
Depth Driller	4581
Depth Logger	4582
Bottom Logged Interval	4558
Top Log Interval	3800
Casing Driller	223
Casing Logger	223
Bit Size	7.875
Type Fluid in Hole	CHEMICAL MUD
Density / Viscosity	9.4 / 54
pH / Fluid Loss	10.5 / 8.8
Source of Sample	FLOWLINE
Rm @ Meas. Temp	0.90 @ 82F
Rmf @ Meas. Temp	0.68 @ 82F
Rmc @ Meas. Temp	1.08 @ 82F
Source of Rmf / Rmc	MEASURED
Rm @ BHT	.610 @ 120F
Time Circulation Stopped	3 HOURS
Time Logger on Bottom	11:00 A.M.
Maximum Recorded Temperature	120F
Equipment Number	860
Location	HAYS, KS.
Recorded By	RUPP
Witnessed By	MAX LOVELY

<<< Fold Here >>>

All interpretations are opinions based on inferences from electrical or other measurements and we cannot and do not guarantee the accuracy or correctness of any interpretation, and we shall not, except in the case of gross or willful negligence on our part, be liable or responsible for any loss, costs, damages, or expenses incurred or sustained by anyone resulting from any interpretation made by any of our officers, agents or employees. These interpretations are also subject to our general terms and conditions set out in our current Price Schedule.

Comments

SUPERIOR WELL SERVICES
785-628-6395
THANK YOU FOR YOUR BUSINESS
DIRECTIONS: UTICA, W TO "B" RD., 2S, 1W, S INTO.

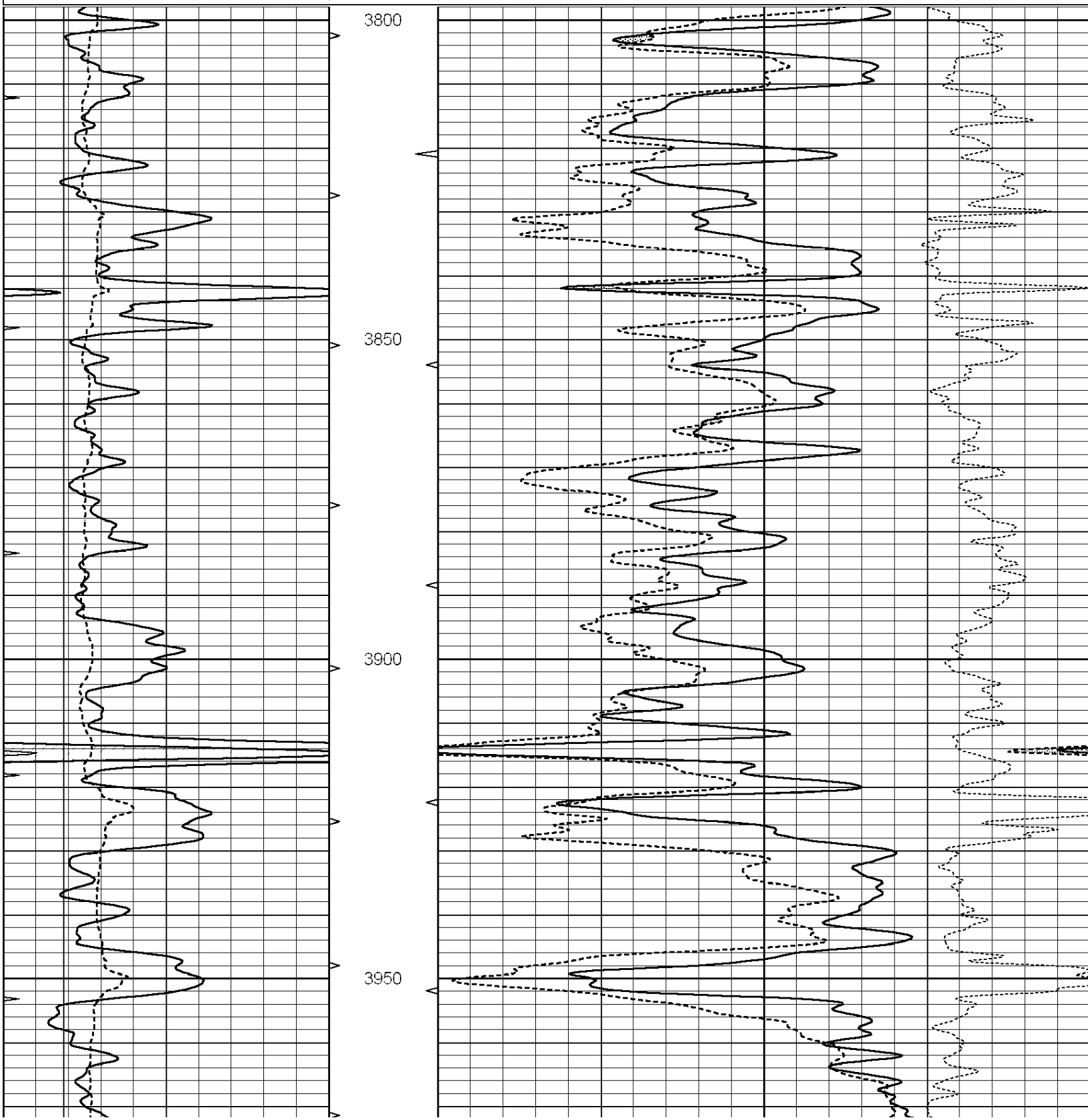


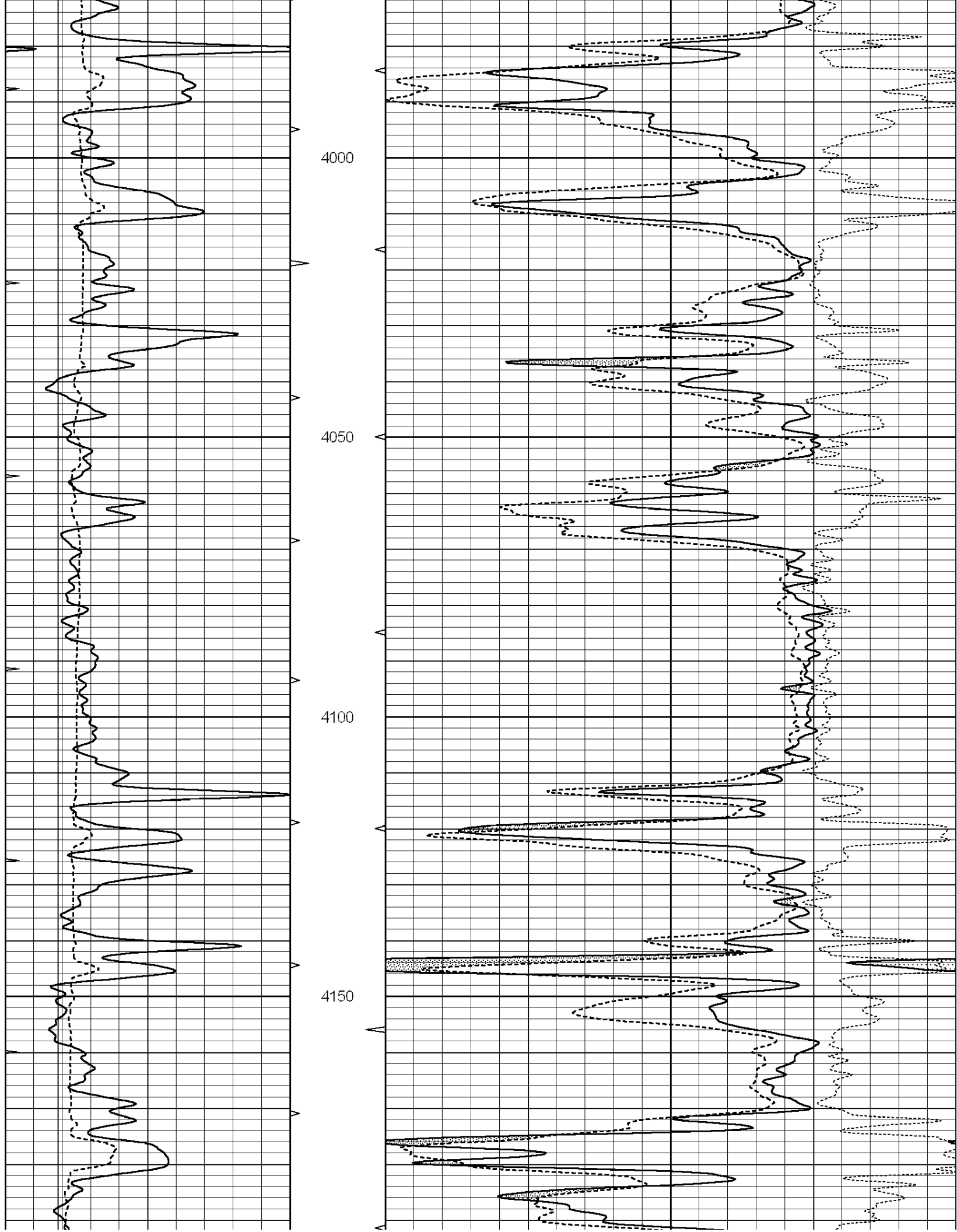
**SUPERIOR
Hays,
Kansas**

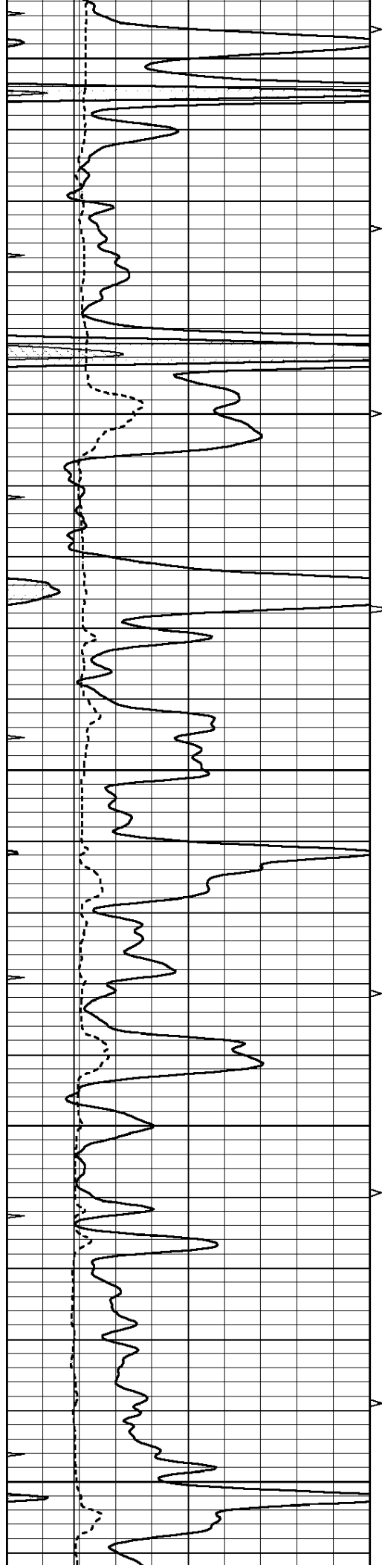
MAIN SECTION

Database File: 006948ddn.db
 Dataset Pathname: pass3.A
 Presentation Format: den_neu
 Dataset Creation: Fri Jul 01 14:21:23 2011
 Charted by: Depth in Feet scaled 1:240

0	GAMMA RAY (GAPI)	150	ABHV	30	COMPENSATED DENSITY (pu)	-10
6	CALIPER (in)	16	10 (ft3)	0 30	COMPENSATED NEUTRON (pu)	-10
0	MINMK	20	TBHV		-0.25 CORRECTION (g/cc)	0.25
			0 (ft3)	10		







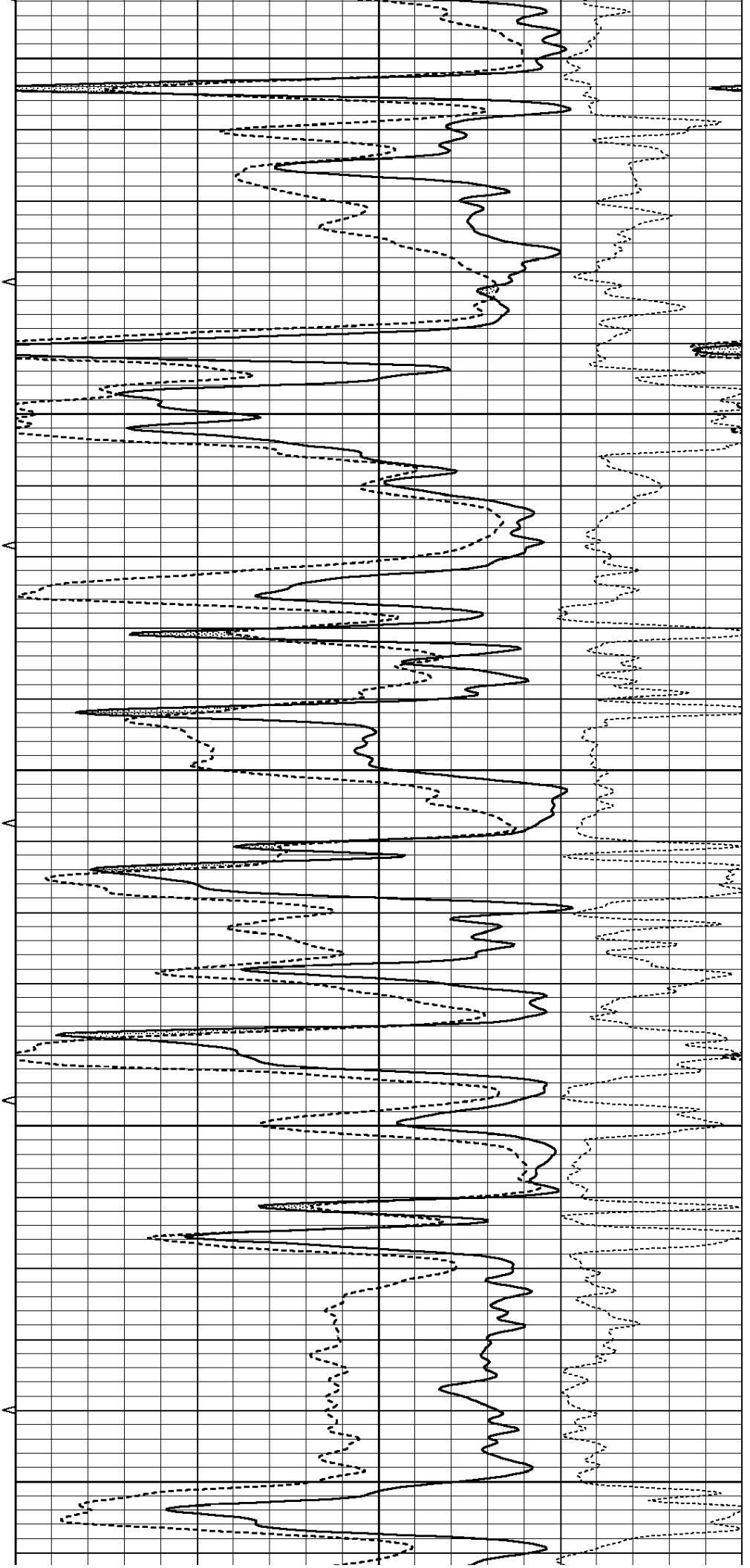
4200

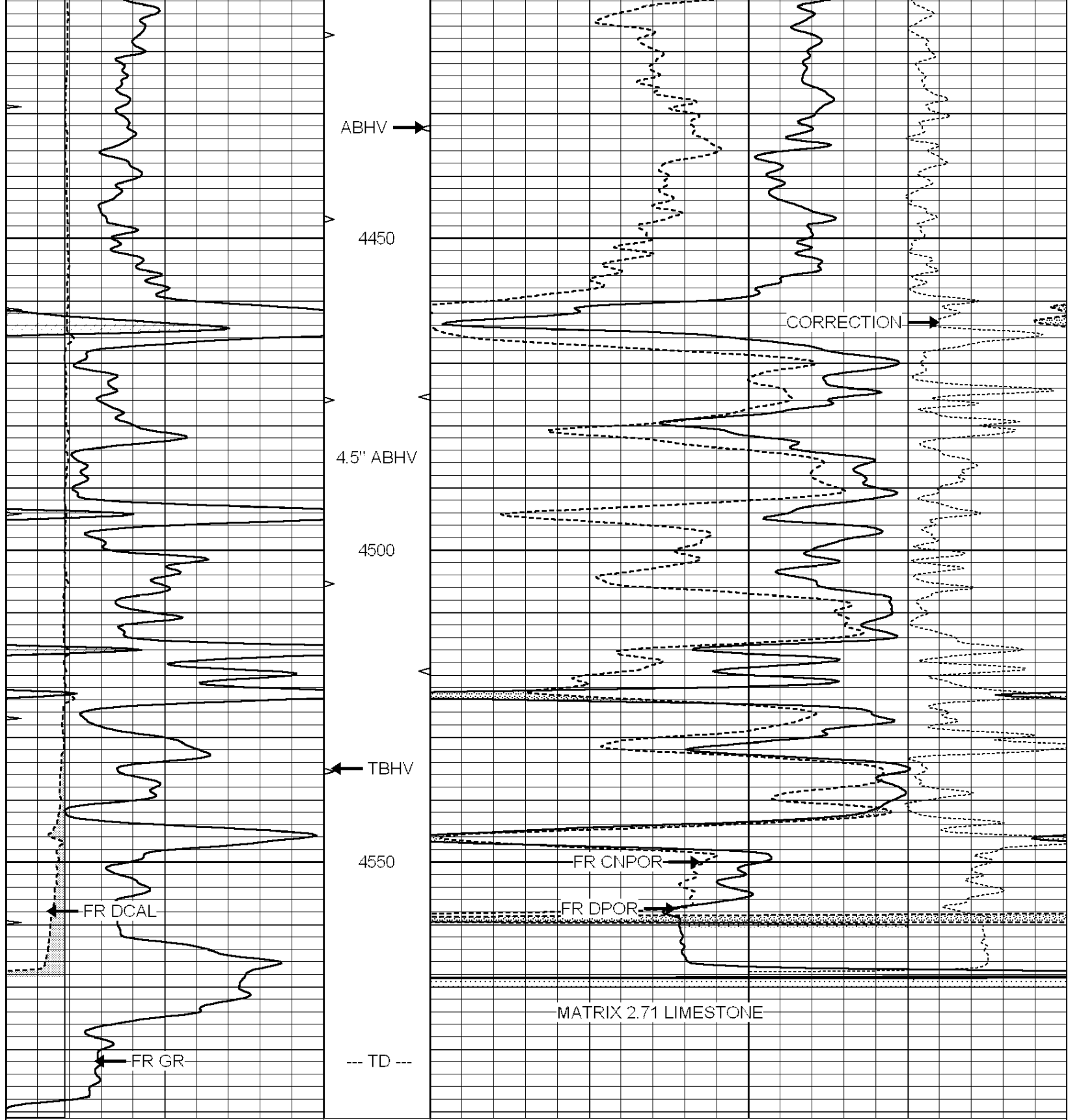
4250

4300

4350

4400





0	GAMMA RAY (GAPI)	150	ABHV	30	COMPENSATED DENSITY (pu)	-10
6	CALIPER (in)	16	10 (ft3)	0	COMPENSATED NEUTRON (pu)	-10
0	MINMK	20	TBHV		-0.25	CORRECTION (g/cc)
			0 (ft3)	10		0.25

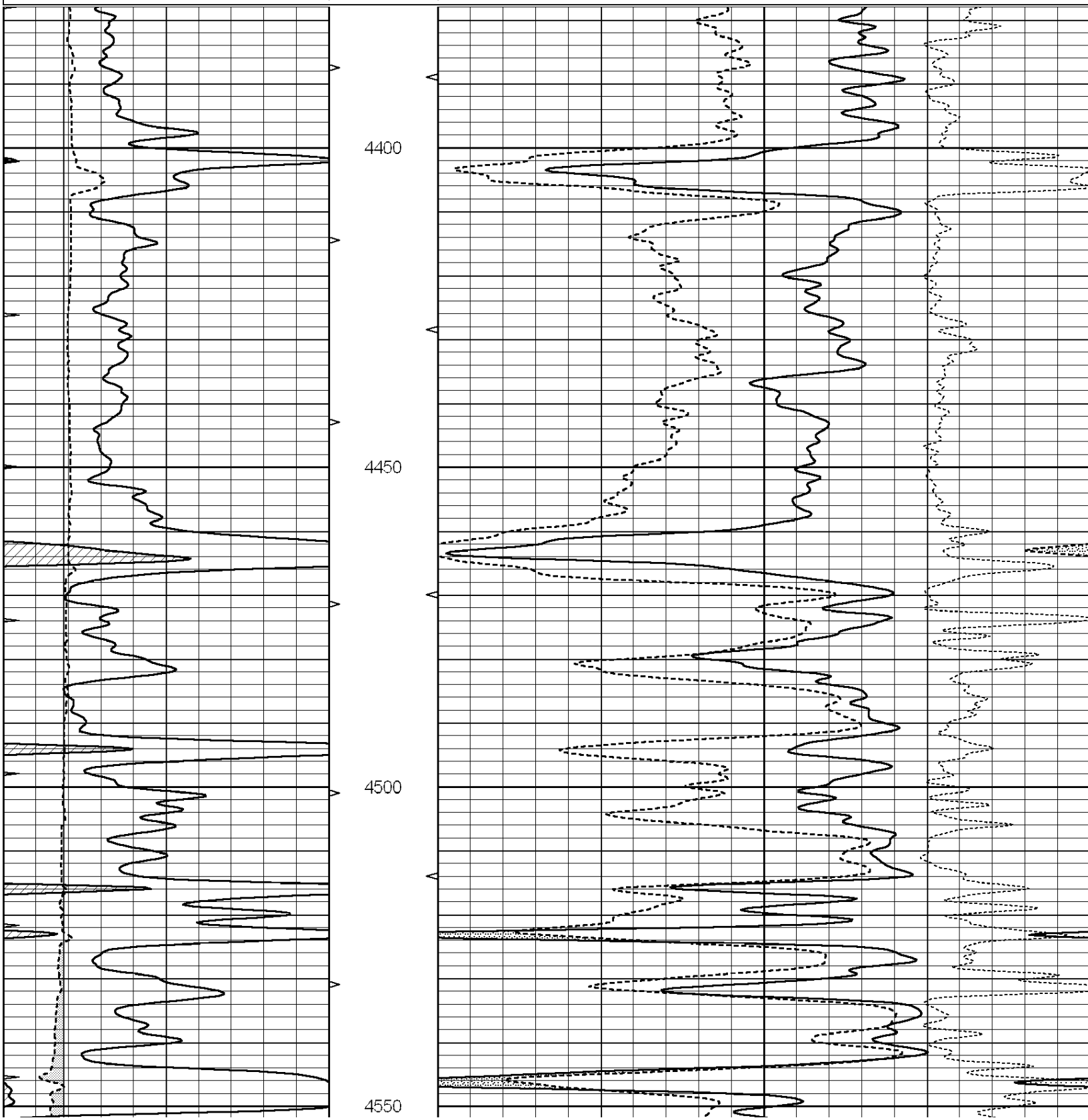


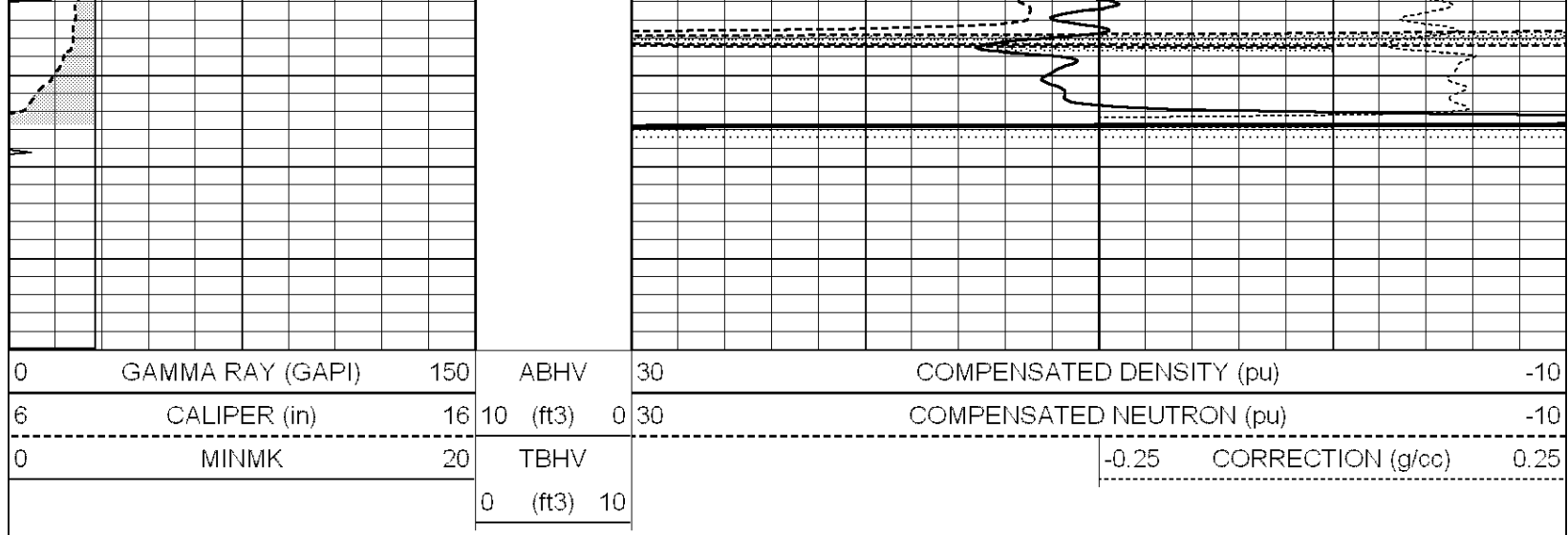
SUPERIOR
Hays,
Kansas

REPEAT SECTION

Database File: 006948ddn.db
 Dataset Pathname: pass2.A
 Presentation Format: den_neu
 Dataset Creation: Fri Jul 01 14:27:31 2011
 Charted by: Depth in Feet scaled 1:240

0	GAMMA RAY (GAPI)	150	ABHV	30	COMPENSATED DENSITY (pu)	-10
6	CALIPER (in)	16	10 (ft3)	0 30	COMPENSATED NEUTRON (pu)	-10
0	MINMK	20	TBHV		-0.25 CORRECTION (g/cc)	0.25
			0 (ft3)	10		





Calibration Report

Database File: 006948ddn.db
 Dataset Pathname: pass3.A
 Dataset Creation: Fri Jul 01 14:21:23 2011

Dual Induction Calibration Report

Serial-Model: DIL5-GEAR
 Performed: Fri Jul 01 12:27:18 2011

Loop:	Readings			References			Results	
	Air	Loop		Air	Loop		m	b
Deep	0.004	0.654	V	0.000	400.000	mmho/m	520.000	-18.000
Medium	-0.005	0.737	V	0.000	462.500	mmho/m	560.000	-14.000
Internal:	Zero	Cal		Zero	Cal		m	b
Deep	0.006	0.655	V	0.000	400.000	mmho/m	615.668	-3.483
Medium	0.010	0.747	V	0.000	462.500	mmho/m	627.607	-6.064

Compensated Density Calibration Report

Serial-Model: GEAR1-GEARHART
 Source / Verifier: 147 / 147
 Master Calibration Performed: Fri Jul 01 12:35:11 2011

Master Calibration

	Density		Far Detector	Near Detector	
Magnesium	1.710	g/cc	1243.76	629.14	cps
Aluminum	2.590	g/cc	282.16	435.01	cps
Spine Angle = 76.03			Density/Spine Ratio = 0.576		
	Size		Reading		
Small Ring	9.40	in	3.82	V	
Large Ring	14.20	in	6.37	V	

Compensated Neutron Calibration Report

Serial Number: NUE_2I
 Tool Model: G

CALIBRATION

Detector	Readings		Target		Normalization
Short Space	1.00	cps	1.00	cps	1.0000
Long Space	1.00	cps	1.00	cps	1.0000

Gamma Ray Calibration Report

Serial Number:	GR5	
Tool Model:	OPEN	
Performed:	Fri Jul 01 12:24:30 2011	
Calibrator Value:	1.0	GAPI
Background Reading:	0.0	cps
Calibrator Reading:	1.0	cps
Sensitivity:	0.6500	GAPI/cps