



Scale 1:240 (5"=100') Imperial  
Measured Depth Log

Well Name: Maier Family Trust 1-25  
 Location: Sec. 25-16S-16W Rush County, Kansas  
 License Number: 15-165-21936-00-00  
 Spud Date: 9/20/11  
 Surface Coordinates: 990' FSL / 580' FEL  
 Region: Allenbough East  
 Drilling Completed: 9-27-2011

Bottom Hole Coordinates:  
 Ground Elevation (ft): 1961' K.B. Elevation (ft): 1971'  
 Logged Interval (ft): 1800' To: 3650' Total Depth (ft): 3650'  
 Formation: Lansing, Arbuckle  
 Type of Drilling Fluid:

Printed by WellSight Log Viewer from WellSight Systems 1-800-447-1534 www.WellSight.com

#### OPERATOR

Company: Sam Gary Jr. & Assoc  
 Address: 1515 Wynkoop, # 700  
 Denver, Co. 80202  
 Geo: Neil Sharp

#### GEOLOGIST

Name: Tim Hedrick  
 Company: EARTH TECH OGL, Inc.  
 Address: PO Box 683  
 102 W. Main  
 Hooker, Okla. 73945

#### DST'S

DST #1 3338 TO 3349' 5 60 20 70  
 IF- WK 1/4" B;O THRU/ ISI-NB/ FF- NB/ FSI- NB  
 IH- 1647, FH 1604/ IF 20 T 18/ FF-21 TO 23/ ISI-587, FSI-300  
 RECOVERED- 2' TOTAL FLUID, 2' DRILL MUD, BHT 102 DEG., PIT CHL 5800/ SAMPLER- 4000 ML M., 80 PSI

DST#2 3416 TO 3455 5 60 20 70  
 IF-SRFC BLO THRU/ISI-NB/ FF- NB/ FSI- NB  
 IH-1661, FH-1603/ IF-19 TO 20, FF- 20 TO 22/ ISI-53 , FSI-34  
 RECOVERED - 5' TF, 5' DRILL M., BHT 100 DEG/ PIT CHL-5900/ SAMPLER 4000 ML M., 25 PSI

#### DSTs

DST#3 3485 TO 3540 5 60 3 120  
 IF - BOB IN 2 MIN./ ISI-3" BLO DIED IN 21 MIN/FF-BOB IN 11/2 MIN/FSI- BOB IN 9 MIN.  
 IH- 1818, FH -1738/ IF 84 TO 188, FF-175 TO 387/ISI- 1139,FSI-1083  
 RECOVERED-510' GIP/ 915' TF, 700' FREEOIL,95%O.,5%M./ 170' GMO,20%G,50%O.,30%M./ 45' VSOCM, 5%O., 95%M.  
 BHT 104, GR 39/ PIT CHL 7300  
 SAMPLER-1500 ML GAS, 1500 ML OIL, 295 PSI- 4000ML TOTAL

#### ROCK TYPES

Anhy  
 Bent  
 Brec  
 Cht  
 Clyst  
 Coal  
 Congl  
 Dol

Gyp  
 Igne  
 Lmst  
 Meta  
 Mrlst  
 Salt  
 Shale  
 Shcol

Shgy  
 Sltst  
 Ss  
 Till  
 Carb sh  
 Dol  
 Dtd  
 Gry sh

Sandylms  
 Shale  
 Sltstn  
 Shlyslts  
 Sitysh  
 Lms

**ACCESSORIES**

**MINERAL**

- Anhy
- Arggrn
- Arg
- Bent
- Bit
- Brefracg
- Calc
- Carb
- Chtdk
- Chtlt
- Dol
- Feldspar
- Ferrpel
- Ferr
- Glau
- Gyp
- Hvymin
- Kaol
- Marl
- Minxl
- Nodule
- Phos
- Pyr

- Salt
- Sandy
- Silt
- Sil
- Sulphur
- Tuff
- Chlorite
- Dol
- Sand
- Sltly

**FOSSIL**

- Algae
- Amph
- Belm
- Bioclst
- Brach
- Bryozoa
- Cephal
- Coral
- Crin
- Echin
- Fish
- Foram

- Fossil
- Gastro
- Oolite
- Ostra
- Pelec
- Pellet
- Pisolite
- Plant
- Strom
- Fuss
- Oomold

**STRINGER**

- Anhy
- Arg
- Bent
- Coal
- Dol
- Gyp
- Ls
- Mrst
- Sltstrg
- Ssstrg
- Carbsh

- Clystn
- Dol
- Grysh
- Gryslt
- Lms
- Sandyms
- Sh
- Sltstn

**TEXTURE**

- Boundst
- Chalky
- Cryxln
- Earthy
- Finexln
- Grainst
- Lithogr
- Microxln
- Mudst
- Packst
- Wackest

**OTHER SYMBOLS**

**POROSITY TYPE**

- Earthy
- Fenest
- Fracture
- Inter
- Moldic
- Organic
- Pinpoint
- Vuggy

**SORTING**

- Well
- Moderate
- Poor

**ROUNDING**

- Rounded
- Subrnd
- Subang

**Angular**

**OIL SHOWS**

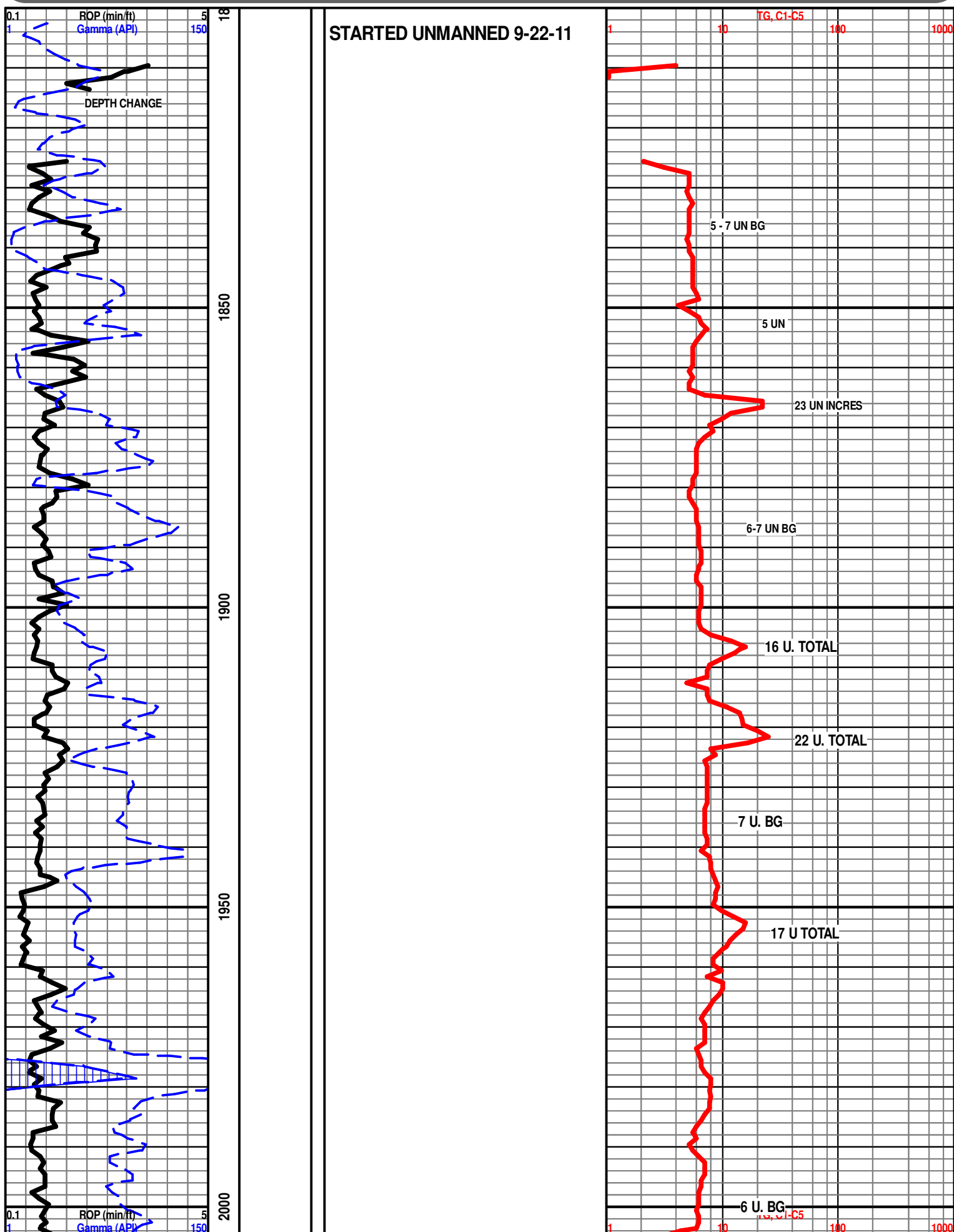
- Even
- Spotted
- Ques
- Dead
- Gas show

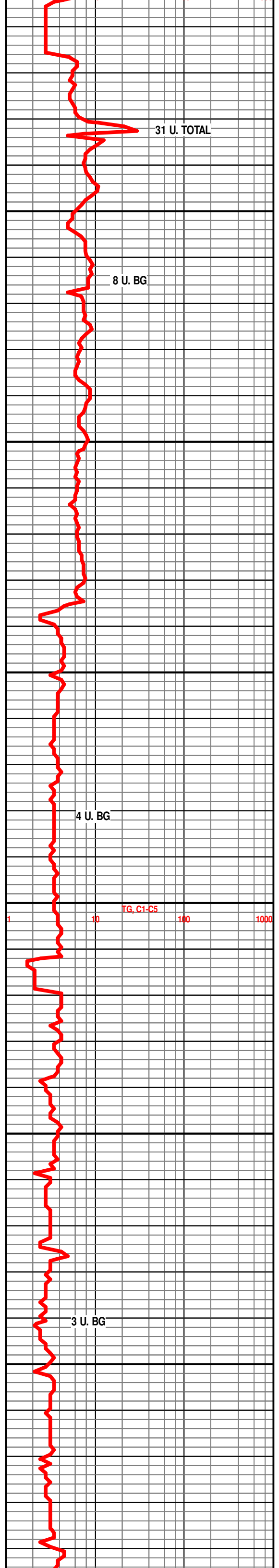
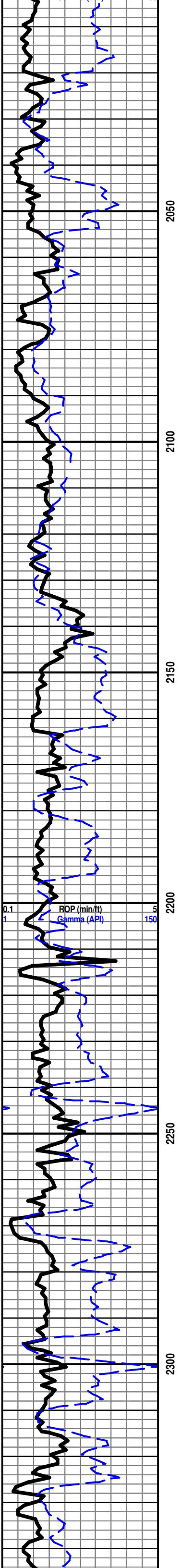
**INTERVALS**

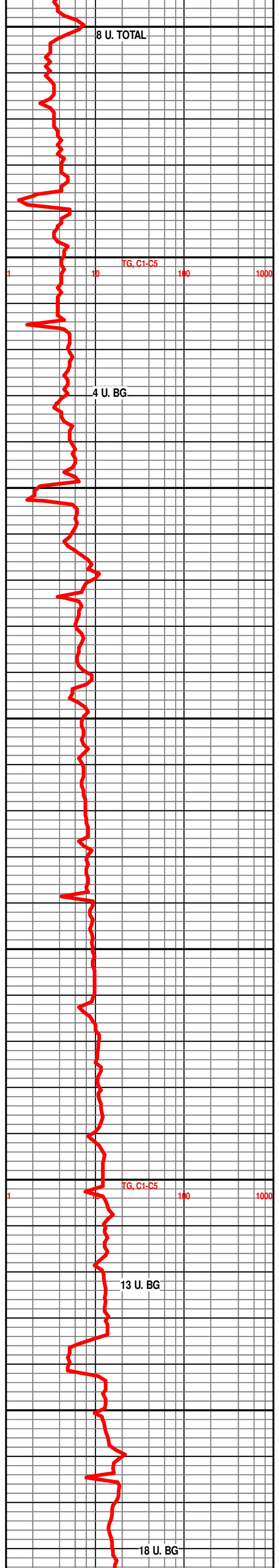
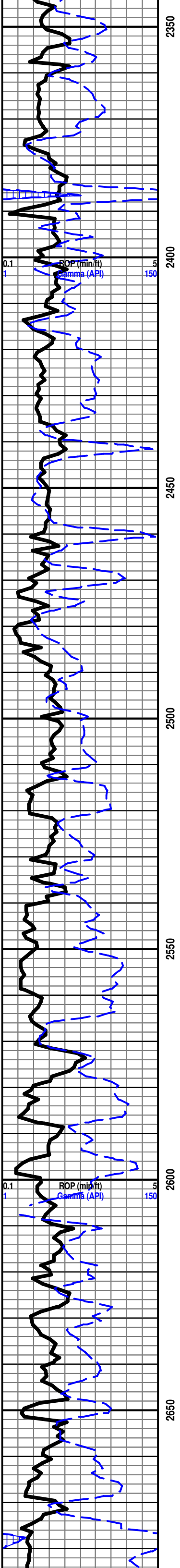
- Core
- Dst
- Dst

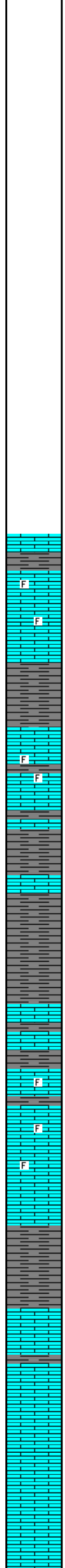
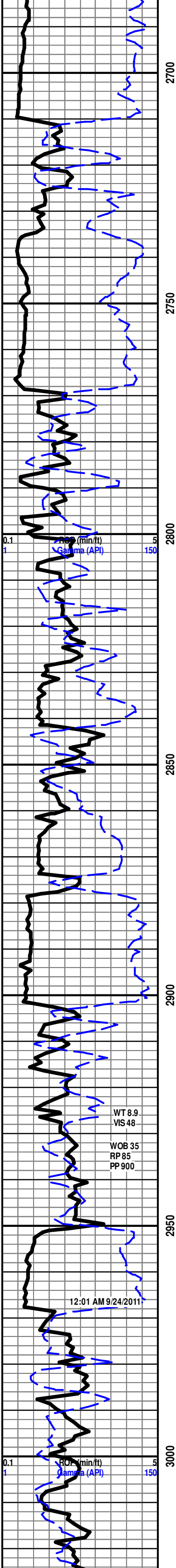
**EVENTS**

- Rft
- Sidewall









**BASE RT SH. 2709' - 738'**

LS- CRM LT TN TN HD DNS TO SLI BRITT, MD-F-XLN RE-XLN MTRX, FOSS FRGS IMBD THRU , BRIT YEL MIN FLO IP, NO VIS POR, NO VIS SHOW

SH- LT TO MD GY- FRM IP BLKY SMTH TXT TO SFT IP

LS- LT TN TO LT GY- HD DNS F-XLN TO MD XLN IP TR IMBD FOSS FRGS IP , TR IMBD DISS SH IP, NO FLO, NO VIS POR, NO VIS SHOW

SH- LT YO MD GY- FRM BLKY IP TO SFT V/ GMMY TXT

SH- LT TO MD GY- FRM IP TO V/ SFT GMMY TO SLI SLTY IP

**HOWARD 2902' - 931'**

LS- TN LT BRN- HD DNS MD-FXLN RE-XLN MTRX, FOSS FRGS IMBD IP, SLI TR IMBD SH IP, LT BRIT YEL MIN FLO , NO VIS POR, NO VIS CUT OR SHOW

LS- OFF WHT TO CRM BFF- HD BRITT IP GRDNG TO ABDT SFT WHT CHLK, TR FOSS FRGS IP, LT BRIT YEL MIN FLO IP, NO VIS POR, NO VIS SHOW

**SEVERY 2950' - 979'**

SH- LT GRN TO MD GY - FRM IP TO V/ SFT SLTY TO V/ SFT GMMY IP

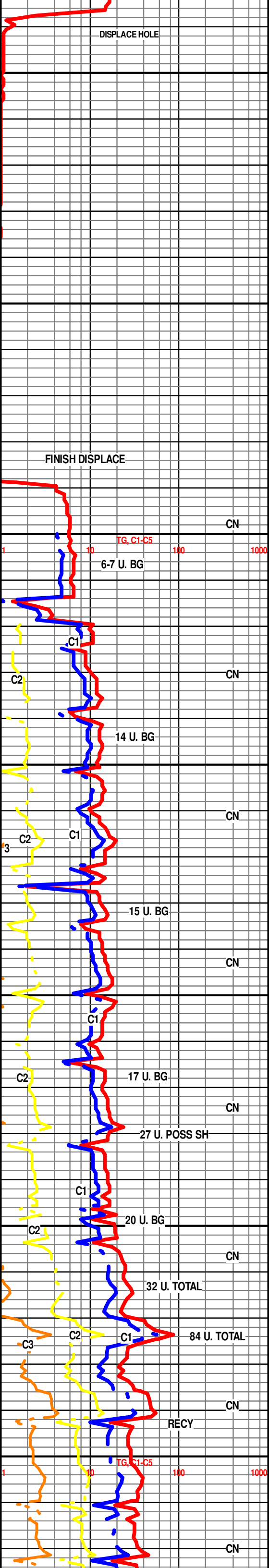
**TOPEKA 2968' - 997'**

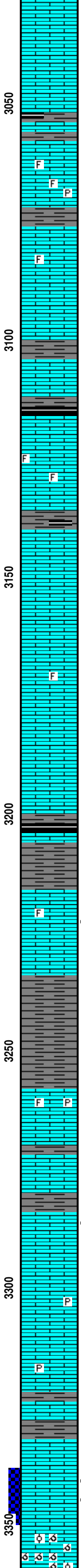
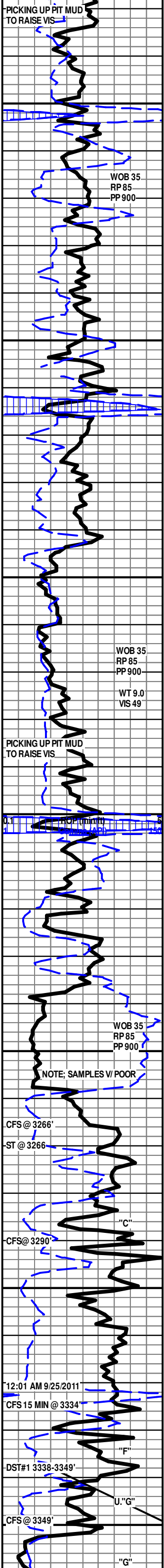
LS- CRM LT TN BFF- HD DNS TO TR BRITT, MD-XLN TO TT SUCRO MTRX, SLI TR SFT WHT CHLK IP, SCAT BRIT YEL FLO IP, TR PR MICRO PP POR IP, NO VIS CUT

LS- OFF WHT CRM - MD HD TO SFT, ABDT WHT CHLK GMMY TXT, NO FLO, NO VIS POR, NO VIS SHOW

LS- CRM TN BFF- HD DNS TO V/ SFT, F-XLN TO S-SUCRO S-CHLKY TO CHLKY, LT YEL MIN FLO, NO VIS POR, NO VIS SHOW

LS- CRM LT TN TN- HD DNS F-V/F-XLN RE-XLN





MTRX IP, SLI TR IMBD ANG LM GRNS IP, NO FLO, NO VIS POR, NO VIS SHOW

LS- CRM LT TN- HD DNS F-V/F-XLN , SUCRO S-CHLKY IP, HVY TR ABDT SFT WHT CHLK, NO FLO, NO VIS POR, NO VIS SHOW

SH- DK GY - FRM BLKY SMTH TXT W/ TR BLK SFT CARB SH IMBD IP

LS- CRM LT TNT TN- HD DNS TO BRITT, MD-F-XLN RE-XLN TRX, SCAT IMBD FOSS FRGS, TR SCAT PYR IP, NO FLO, NO VIS POR, NO VIS SHOW

**LeCOMPTON 3075' - 1104'**

LS- CRM LT TN TN- HD DNS F-MD -XLN SLI RE-XLN IP, SLI TR FOSS FRGS IP , SLI TR IMBD WHT CHLK, NO FLO, NO VIS POR, NO VIS SHOW

SH- LT GRN, V/ SFT GMMY TXT

SH- BLK SFT CARB

LS- OFF WHT CRM BFF- HD DNS TO BRITT, MD-F-XLN RE-XLN MTRX IP, HVY TR SCAT FOSS FRGS IP, SLI TR SUCRO S-CHLKY IP, LT YEL MIN FLO, NO VIS POR, NO VIS SHOW

SH- DK GY TO BLK- FRM BLKY SMTH TXT TO BLK SFT CARB IP

LS- OFF WHT CRM- MD HD TO SFT, V/ SUCRO S-CHLKY TO CHLKY IP, SLI TR AREN LOOKING TXT IP, NO FLO, NO VIS POR, NO VIS SHOW

LS- OF WHT WHT- MD HD TO SFT, V/ SUCRO S-CHLKY TO CHLKY MTRX, SLI TR FOSS FRGS IP, NO FLO, NO VIS POR, NO VIS SHOW

LS- OFF WHT CRM BFF- HD DNS IP TO SFT CHLKY, F-XLN TO SUCRO S-CHLKY IP, NO FLO, NO VIS POR, NO VIS SHOW

**HEEBNER 3200' - 1229'**

SH- BLK SFT CARB

SH- LT GY TO LT GRN- V/ FRM IP TO V/ SFT GMMY TXT

3221- 3224' LS- OFF WHT CRM (LT TN STN IN 10%), HD DNS F-V/F-XLN RE-XLN MTRX, SLI TR FOSS FRGS IMBD IP, SLI TR SFT WHT CHLK IMBD IP, DLL YEL FLO IN 80%, BRIT YEL GLD FLO IN 10%, PR VIS INTER FOSS POR IN 10%, NO VIS POR IN 80%, GD FLSH CUT TO FR SLO STRM CUT IN 10%, NO ODOR

**DOUGLAS 3234' - 1263'**

SH- LT GY GY- FRM IP TO V/ SFT SLTY TXT

**LANSING 3258' - 1287'**

LS- CRM BFF OFF WHT- HD DNS TO BRITT IP, MD-XLN RE-XLN MTRX IP, HVY TR ABDT SFT CHLK IP, TR SCAT IMBD FOSS FRGS IP, SCAT IMBD PYR CLSTRS, NO FLO, NO VIS POR, NO VIS SHOW

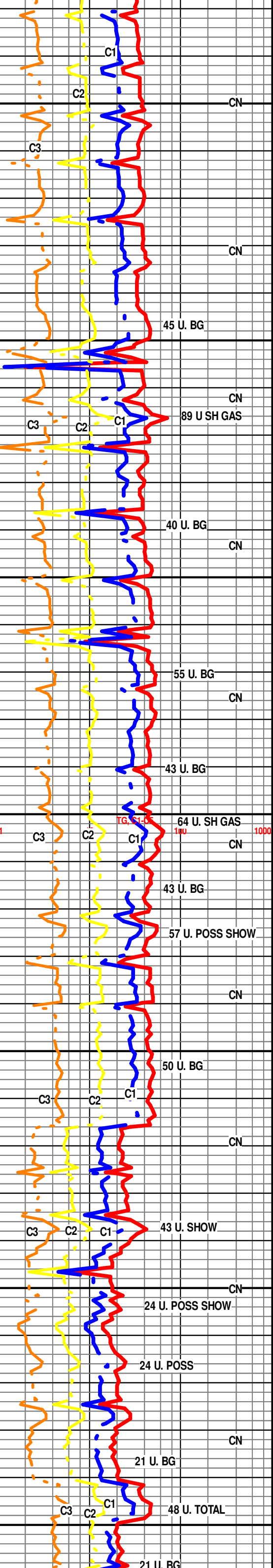
3284 - 3286 LS- OFF WHT CRM BFF(LT TN STN IN 10%)- HD DNS IP TO BRITT IP, MD-F-XLN RE-XLN MTRX, HVY TR FOSS FRGS IP, ABDT SFT WHT CHLK IMBD IP, BRIT YEL GLD FLO IN 10%, DLL YEL FLO IN 20%, NO FLO IP, PR TO FR VIS MICRO VUG POR IP, TR PR SCAT INTER FOSS POR IP, LT FLSH TO V/ WK SLO STRM CUT IN 10%, FLEETING ODOR

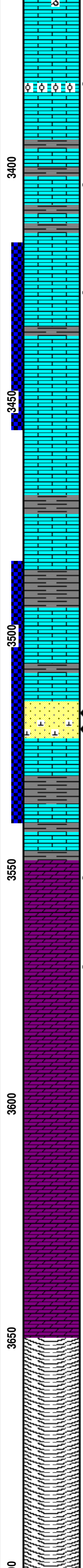
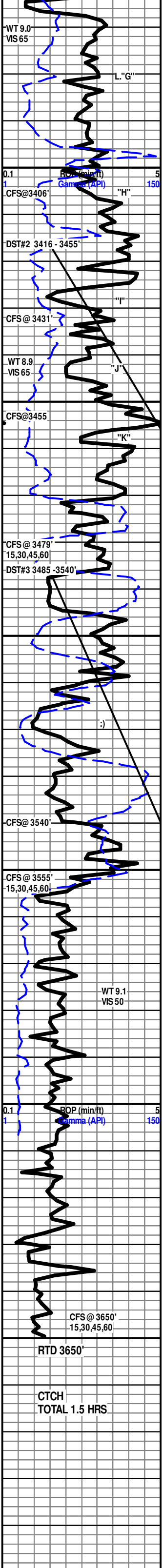
3301-3304 LS- OFF WHT CRM BFF- HD DNS F-V/F-XLN RE-XLN IP, TR IMBD CALC XLS IP, HVY TR ABDT FRM TO SFT WHT CHLK IP, SLI TR SCAT PYR CLSTRS, DLL YEL FLO IP TO NO FLO , POSS FRACT POR IP, NO VIS SHOW OR CUT

LS- OFF WHT WHT- HD DNS F-XLN TO SUCRO S-CHLKY IP, ABDT SFT WHT CHLK , TR FREE PYR CLSTRS, NO FLO, NO VIS POR, NO VIS SHOW

3341 TO 3346- LS- CRM LT TN TN ( TN STN IN 70%) HD DNS IP TO V/ BRITT, MD-F-XLN RE-XLN MTRX, SMLL IMBD OOL IP, SCAT FOSS FRGS THRU, TR WHT CHRT IP, BRIT YEL GLD FLO 90%, PR VIS INTER FOSS POR, SCAT FR TO TR GD INTER-OOL POR, TR SCAT MICROVUG POR, ABDT V/ SMLL CUTTINGS W/ STN, V/ GD FLSH CUT TO GD SLO STRM MLKY BLU CUT IN 80%, FR OIL ODOR, LT TN LCH ON DISH

LS- OFF WHT CRM- HD V/ BRITT V/ RE-XLN MTRX, V/ OOLMLD TO SLI OOL IP W/ SMLL TO MD OOL, HVY TR WHT CHRT , V/ DLL YEL MIN FLO, GD TO EXCEL OOLMLD POR, SCAT VUG POR IP, NO VIS SHOW





LS- OFF WHT CRM, HD BRITT, F-XLN RE-XLN IP, PYR IP, NO FLO, NO VIS POR, NO CUT

3381-3383 LS- OFF WHT CRM LT TN DUE TO STAIN SCAT IN 50% HD VBRITT MD-XLN TO RE-XLN MTRX TO SUCRO SUB CHLKY IP,ABDT IMBD SM OOL, TR SMLL OOL AT POINT MTRX,TR SM CALC XLS IP, DLL YEL GLD FLO THRU OUT SCAT BRIT YEL GLD FLO IN 50%, PR TO FR SCAT VUG POR, TR PR TO FR VIS INT-OOL POR IP V/GD FLUSH CUT TO EXCL SLO STRM MILKY BLUE CUT LT OIL ODOR BRN LCH ON DISH

3400'-3403' LS- OFF WHT CRM TN BRN DUE TO OIL STAIN HD DNSE F/MD-XLN RE-XLN MTRX V/SUB CHLKY IP, BRIT YEL GLD FLO IN 30% DLL YEL GLD FLO IN 40% PR TO FR SCAT MICRO VUG POR SCAT THRU, PR SCAT MICRO P.P. POR IP, GD FLUSH CUT, FR TO GD SLO STRM CUT, LT TN LCH ON DISH, LT OIL ODOR

3425-3428 LS- WHT OFF WHT W/ BLK DOS 80%, HD DNSE TO BRITT IP, MD- F-XLN, RE-XLN MTRX V/FOSS HVY TR FREE MD CALC XLS IP SLI TR SUB CHLKY IP, DLL YEL GLD FLO IN 40% BRIT YEL GLD SPOTTED FLO 20%, PR TO FR VIS INTER FOSS POR SCAT THRU, TR OF PR SCAT VUG POR FR FLUSH CUT TO V/GD SLW STRM RICH MILKY BLUE CUT GD OIL ODOR WET FR OIL ODOR DRY

LS- WHT OFF WHT, V/FRM CHLKY MTRX, DLL YEL FLO, NO VIS POR, NO SHOW

LS- WHT OFF WHT TO TN, HD DNS, FN V/F-XLN FARLY NON DESCRIPT, DLL YEL FLO IN 60%, NO VIS POR, NO SHOW

LS- CRM OFF WHT WHT LT TN, HD DNS, FN XLN TO REXLN MTRX IP, SLI TR IMBD CALC XLS SCAT IP, DLL YEL FLO IP, NO VIS POR, NO VIS SHOW

SH- RED GY BRN IP, FRM BLKY GRNY TXT

LS- OFF WHT TO WHT V/ SUCRO S-CHLKY TO CHLKY MTRX, ABDT FRM WHT CHLK, NO FLO, NO VIS POR, NO VIS SHOW

SH- RD DK RD- FRM BLKY SMTH TXT TO V/ SFT GMMY

LS- OFF WHT TO WHT - HD DNS V/F-CRYPTO-XLN IMBD WHT CHT, TR FOSS FRGS IP, LT YEL MIN FLO, NO VIS POR, NO VIS SHOW

3514 TO 3517 SS- DK TN BRN DUE TO OIL STN IN 90%, HD TO V/FRI, F-GRN CLR QURTZ GRNS ANG TO S-ANG, WLL SRT, SIL CMNT W/ DK BRN STN THRU, PR VIS INTER-GRN POR DLL YEL GLD FLO THRU SPTTD BRIT YEL GLD FLO IP, EXCEL INST FLSH CUT TO EXCEL SLO STRM MLKY BLUE CUT THRU, BRN LCH ON DISH

3517-3520 SS- DK TN DK BRN (LV OIL STN IN 70%, HD V/FRI, F-MD QURTZ GRNS ANG S-ANG GRNS, TR S-RND IP,CLR GRNS, FR SRT, HVY TR IMBD LRG ANG LM GRNS IP, SIL CMNT TO SLI CALC CMNT,PR TO FR VIS INTER-GRN POR THRU, HVY TR GD INTERGRN POR IN 20%,DLL YEL GLD FLO THRU, SPTTD YEL GLD FLO SCAT THRU, EXCEL INST FLSH CUT TO EXCEL SLO STRM MLKY BLUE CUT THRU, BRN LCH ON DISH

**ARBUCKLE 3548' -1577'**

DOL- OFF WHT WHT LT GRYISH TN, STAIN IN 20%, HD DNS TO BRITT, FN XLN TO CRS SUCRO MTRX THRU, ABDT IMBD SM S/ANG TO ANG DOL GRNS THRU, IMBD PYR SCAT IN 15%, TR SFT WHT CHLK IMBD IP, DLL GLD FLO IN 40%. PR TO FR INTR-XLN POR, GD FLUSH CUT THRU TO GD STRONG MLKY BLUE STREAM CUT THRU, TN STAIN ON DISH

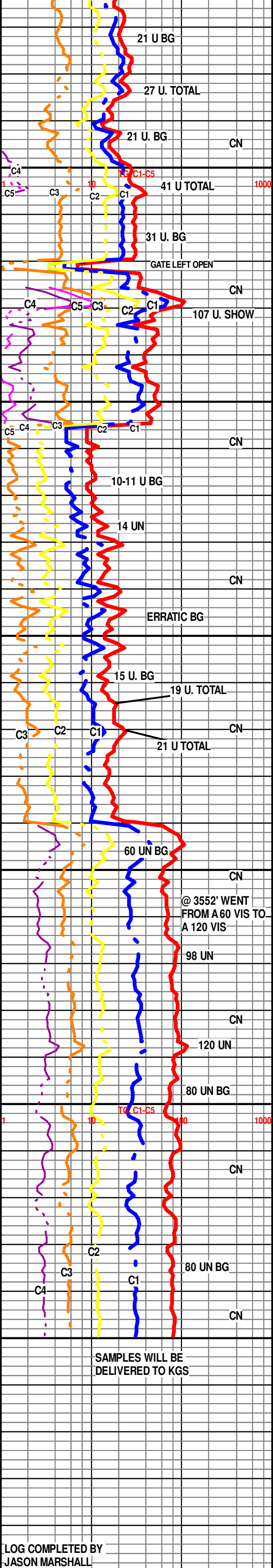
DOL- GRYISH TN TO DK TN OFF WHT IP, STAIN IN 40%, HD DNS TO VBRITT, FN XLN TO CRS SUCRO MTRX THRU, ABDT IMBD SM S/ANG TO RND DOL GRNS THRU, DLL GLD FLO IN 50%. FR TO TR GD INTR-XLN TO TR FR VUG POR, GD FLUSH CUT THRU TO GD STRONG MLKY BLUE STREAM CUT THRU, TN STAIN ON DISH, NO ODOR

DOL- OFF WHT WHT, HD DNS TO BRITT, FN TO MD XLN TO SUCRO MTRX THRU, ABDT IMBD SM S/ANG TO RND DOL GRNS THRU, SLI TR IMBD PYR SCAT IN 5%, DLL YEL FLO IN 20%. PR INTR-XLN TO FR VUG POR, FR FLUSH CUT THRU TO PR STREAM CUT IN 10%, NO ODOR

DOL- OFF WHT WHT, HD DNS TO BRITT, FN XLN TO SUCRO MTRX THRU, ABDT IMBD SM S/ANG TO RND DOL GRNS THRU, DLL YEL FLO IN 40%. FR INTR-XLN POR, NO VIS CUT NO VIS SHOW

DOL- OFF WHT WHT, HD DNS TO BRITT, FN XLN TO SUCRO MTRX THRU, ABDT IMBD SM S/ANG TO RND DOL GRNS THRU, DLL YEL FLO IN 40%. FR INTR-XLN POR, NO VIS CUT NO VIS SHOW

**TD 3650' @ 4:00 PM 09/27/2011**



THANK YOU FOR CHOOSING EARTHTECH

LOG COMPLETED BY JASON MARSHALL

CTCH TOTAL 1.5 HRS