

MACKLIN M. ARMSTRONG

Geologist

Kansas License Number 743

316-209-5047

Scale 1:240 Imperial

Well Name: Kirk No. 1-5(SE)
Surface Location: Sec 5 T30S R22W
Bottom Location: 540' FSL and 330' FEL
API: 15-025-21531
License Number: 5316
Spud Date: 10/6/2011 Time: 12:30 PM
Region: Clark County, Kansas
Drilling Completed: 10/21/2011 Time: 4:21 PM
Surface Coordinates:
Bottom Hole Coordinates:
Ground Elevation: 2433.00ft
K.B. Elevation: 2443.00ft
Logged Interval: 3600.00ft To: 5990.00ft
Total Depth: 5990.00ft
Formation:
Drilling Fluid Type: Chemical/Fresh Water Gel

OPERATOR

Company: Falcon Exploration, Inc.
Address: 125 North Market
Wichita, Kansas 67202
Contact Geologist:
Contact Phone Nbr: 316-262-1378
Well Name: Kirk No. 1-5(SE)
Location: Sec 5 T30S R22W API: 15-025-21531
Pool: Wildcat Field: Wildcat
State: Kansas Country: Clark

CONTRACTOR

Contractor: Val Energy
Rig #: 3
Rig Type: mud rotary
Spud Date: 10/6/2011 Time: 12:30 PM
TD Date: 10/21/2011 Time: 4:21 PM
Rig Release: 10/21/2011 Time: 11:00 AM

ELEVATIONS

K.B. Elevation: 2443.00ft Ground Elevation: 2433.00ft
K.B. to Ground: 10.00ft

SURFACE CO-ORDINATES

Well Type: Vertical

Well Type: vertical
 Longitude: 99.73911
 N/S Co-ord:
 E/W Co-ord:

Latitude: 37.45431

NOTES

Date	Depth	Activity
10-06-11	MIRU	Spud at 12:30 pm
10-07-11	625	Drilling
10-08-11	1167	Drilling
10-09-11	2483	Drilling
10-10-11	3049	TOH to fish for Drill Collars
10-11-11	3162	Drilling
10-12-11	3593	Drilling
10-13-11	4180	Drilling
10-14-11	4597	TOH to repair Rotary Table
10-15-11	4697	Drilling Ahead
10-16-11	5082	Drilling Ahead
10-17-11	5342	CTCH
10-18-11	5342	TIH after DST No. 1
10-19-11	5584	Drilling Ahead
10-20-11	5880	Drilling Ahead
10-21-11	5990	P & A

Surface Casing: 8 5/8" 23# at 655'
 Production Casing: None Set

Deviation: 655 - 1 deg
 3173 - 1 1/4 deg
 4597 - 1 1/4 deg
 5342 - 1 3/4 deg
 5990 - 3/4 deg

Bit Record:	Make	Type	Depth In	Depth Out	Hours
	JZ 7 7/8"	QX20	655	5524	150 1/2
	JZ 7 7/8"	QX20	5524	5990	35 1/4

Drill Stem Tests:

DST No. 1 5314 to 5342
 3-120-120-180
 IHP 2614 FHP 2483
 IFP 840-514 FFP 408-380
 ISIP 1047 FSIP 444
 Temp 116 deg
 Gas Flows during FFP: 10" - 78.1 mcf, 20" - 59.2 mcf, 30" - 20.9 mcf, 97" - 5.6 mcf, 100" - 3.71 mcf
 Recovery: 4440' Gas in Pipe
 65' Mud
 190' GSOCM - 17%G, 3%O, 80%M
 125' GWMCO - 20%G, 18%W, 10%M, 52%O
 440' GOMCW - 21%G, 26%O, 10%M, 43%W
 30' GSOMCW - 7%G, 3%O, 12%M, 78%W (Chl 67,000 ppm)

Formation	Sample	E-Log	Datum	Well 1	Well 2
Root Shale	3610	3612	-1169	+15	-4
Stotler	3674	3675	-1232	+20	-3
King Hill	4177	4177	-1734	+9	+2
Heebner	4388	4390	-1947	+7	-1
Toronto	4405	4405	-1962	+8	0
Douglas	4430	4430	-1987	+1	-1
Brown Lime	4548	4549	-2106	+10	-2
Lansing	4568	4570	-2127	+11	+2
Stark	4910	4910	-2467	+17	+10

Swope	4917	4917	-2474	+18	+14
Hushpuckney	4947	4948	-2505	+17	+9
Hertha	4958	4960	-2517	+18	+12
B/Kansas City	5016	5018	-2575	+15	+10
Marmaton	5033	5035	-2592	+16	+11
Pawnee	5114	5115	-2672	+14	+10
Cherokee Shale	5161	5162	-2719	+13	+21
Inola	5257	5257	-2814	+12	+12
Morrow Shale	5268	5268	-2825	+7	+13
Mississippi	5290	5291	-2848	+22	+18
Cowley Facies	5776	5778	-3335	NP	NP
Total Depth	5990	5992	-3549		

Reference Well No. 1: Pickrell Drilling Company, Baldwin 'O' No. 1, NE NE Sec 8 T30S R22W
Reference Well No. 2: Harris Oil and Gas, Baldwin No. 1-9, S2 NW NW Sec 9 T30S R22W

Due to the results of the Drill Stem Test and the electric log calculations, it was decided to plug this test well.

Respectfully submitted,
Macklin M. Armstrong

ROCK TYPES

Cht	Dolsec	shale, gry
Dolprim	Lmst fw7>	Carbon Sh

ACCESSORIES

MINERAL

▲ Chert, dark

FOSSIL

F Fossils < 20%
φ Oolite

OTHER SYMBOLS

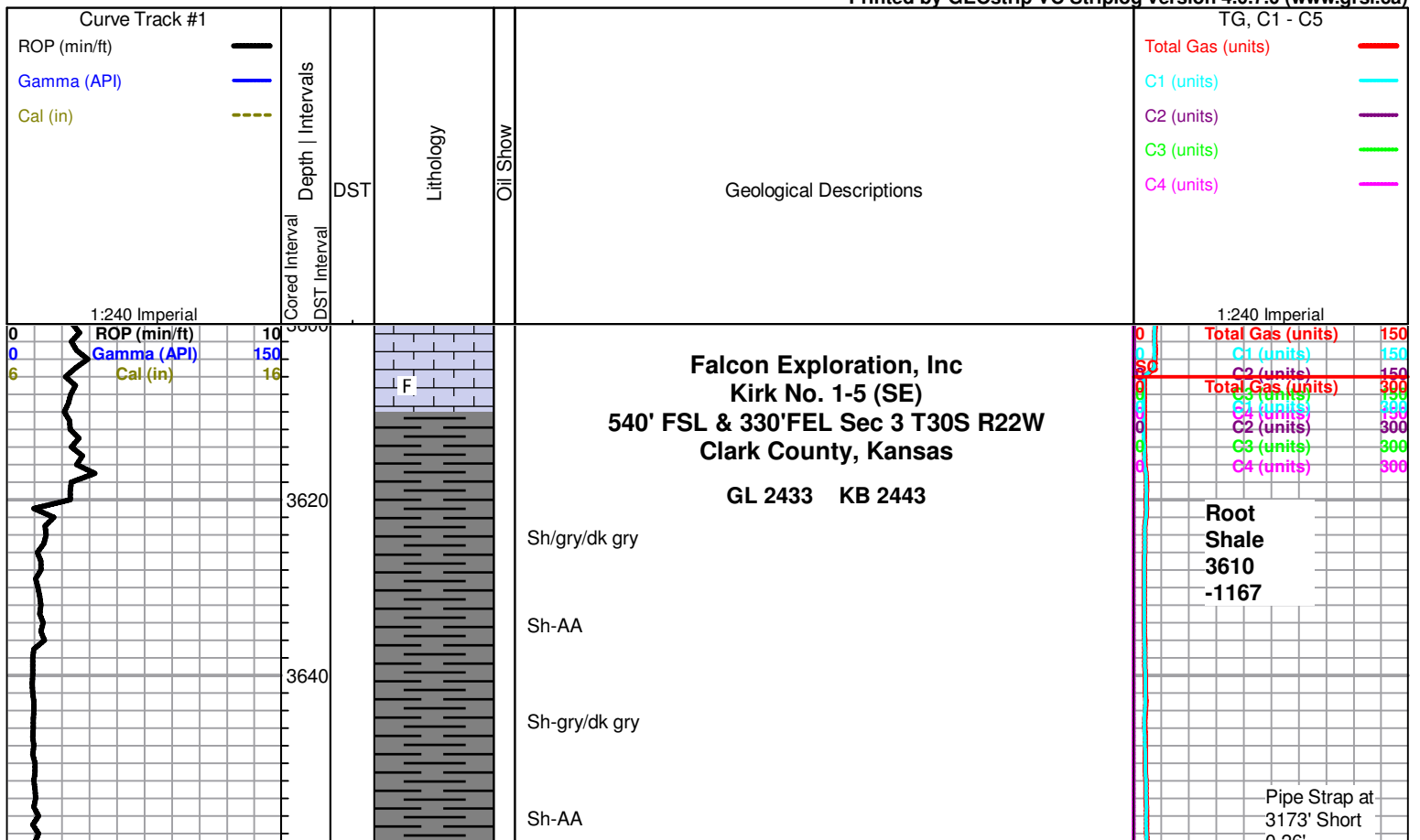
INTERVALS

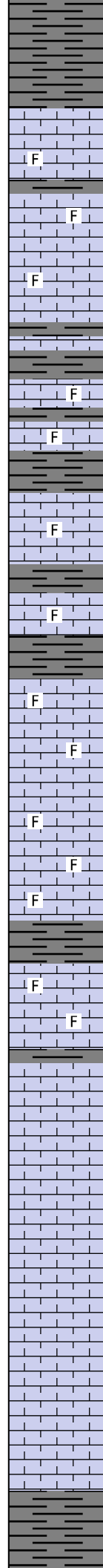
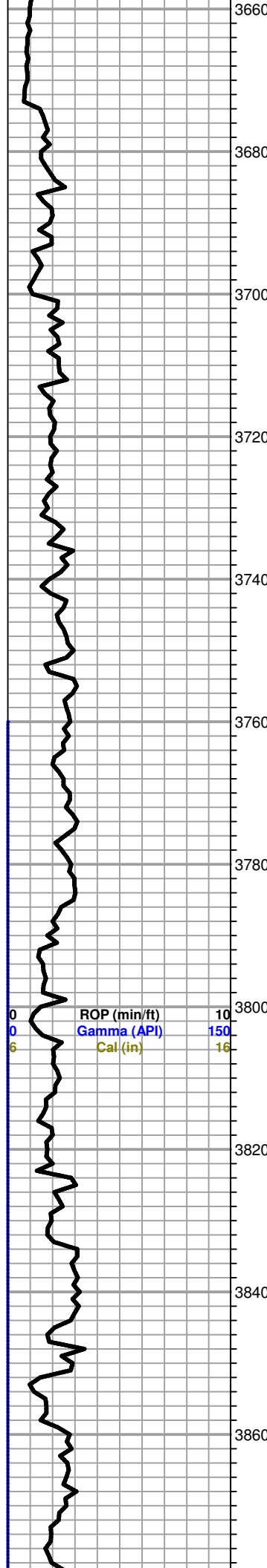
■ Core
· DST

DST

■ DST Int
■ DST alt
■ Core

Printed by GEOstrip VC Striplog version 4.0.7.0 (www.grsi.ca)





Sh-AA

-----Stotler 3674 -1231-----

Ls-frm/tan/lt gry f/mxln mhd/dns sl fos no por

Sh-gry/dk gry

Ls-frm/tan/lt gry f/mxln mhd/dns sl fos no por

Ls-frm/tan f/mxln mhd sl fos no por

Sh-gry/dk gry

Sh-AA

Ls-tan/gry f/mxln mhd sl fos no por sm Ls-tan oom

Sh-gry/dk gry

Ls-AA

Sh-gry/dk gry

Ls-tan/gry f/mxln mhd sl fos no por

Sh-gry/dk gry

Ls-tan/gry f/mxln mhd/dns sl fos no por sm Ls-tan oom

Sh-gry/dk gry

Ls-frm/tan f/mxln mhd/dns sl fos no por

Ls-AA

Ls-frm/tan f/mxln mhd/dns sl fos no por

Ls-AA

Sh-gry/dk gry

Ls-frm/tan f/mxln mhd/dns sl fos no por

Ls-frm tan f/mxln mhd sl fos trc xln por ns

Sh-gry/dk gry

Ls-frm/tan/lt gry f/mxln mhd/dns no por

Ls-AA

Ls-lt gry/tan fxln mhd no pos

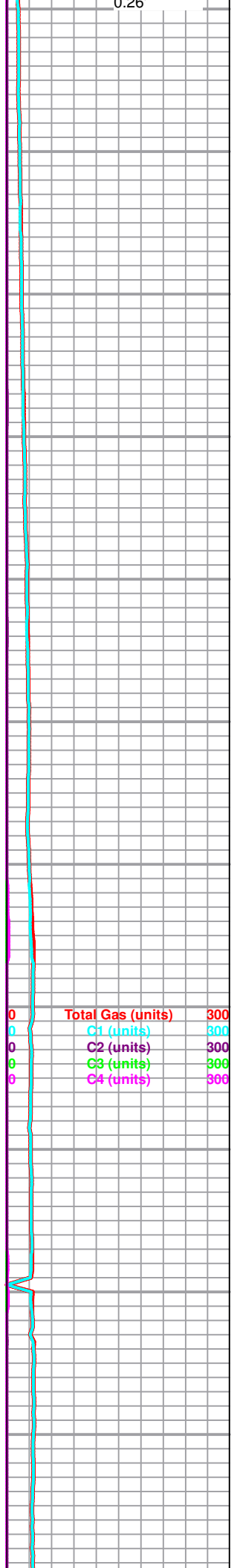
Ls-lt gry/tan fxln dns no por

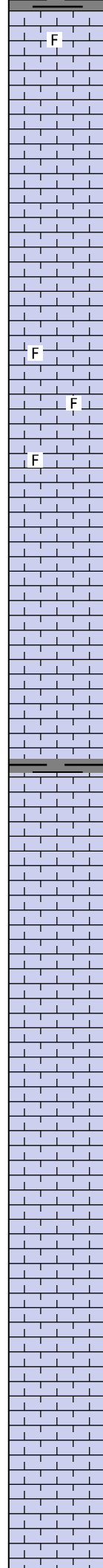
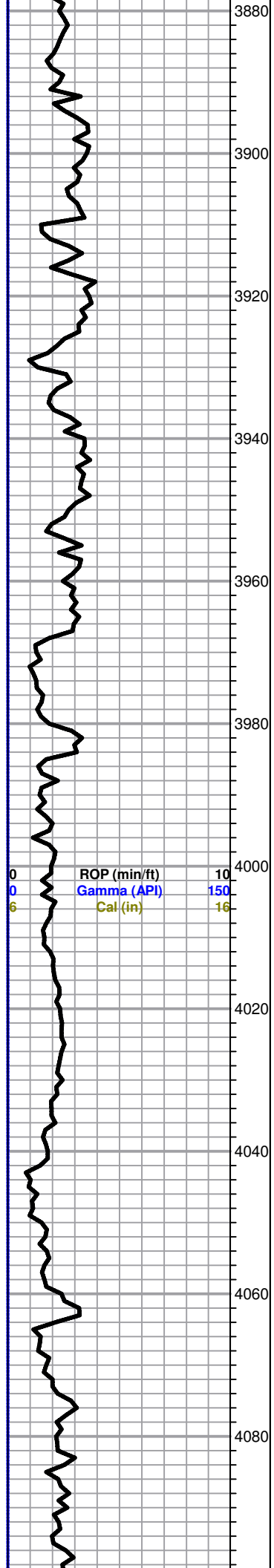
Ls-AA

Ls-lt gry/tan fxln mhd trc xln por ns

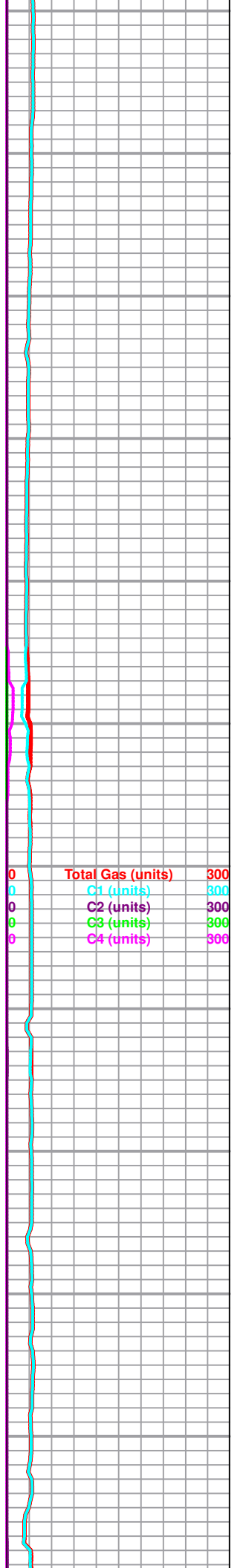
Ls-lt gry/tan fxln dns no por

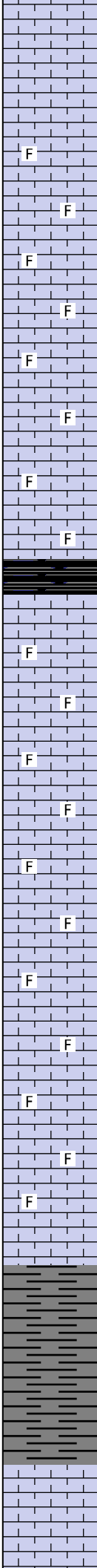
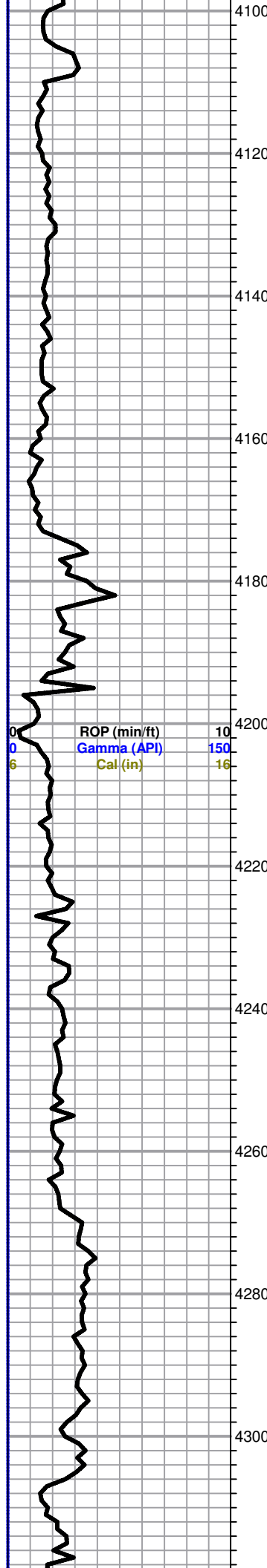
Sh-gry/dk gry



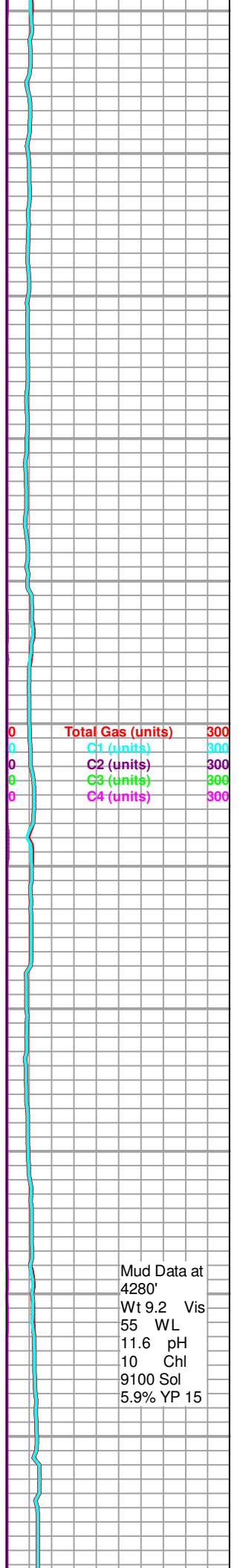


Ls-lt gry/tan/crm fxln mhd/dns sl fos no por
 Ls-AA
 Ls-lt gry/crm/tan fxln dns no por
 Ls-AA
 Ls-lt gry/tan f/mxln mhd trc xln por ns
 Ls-lt gry/tan fxln dns no por
 Ls-crm/tan f/mxln mhd sl fos trc xln por ns
 Ls-crm/tan f/mxln mhd/dns sl for no por
 Ls-AA
 Ls-crm/tan fxln mhd trc xln por ns
 Ls-crm/tan fxln mhd/dns no por
 Ls-crm/tan fxln s/mhd trc xln por ns
 Ls-crm/tan fxln mhd/dns no por
 Sh-gry/dk gry
 Ls-lt gry/tanfxln mhd no por
 Ls-AA
 Ls-lt gry/tan fxln mhd/dns no por
 Ls-AA
 Ls-lt gry/tan fxln mhd/dns no por
 Ls-crm/tan f/mxln s/mhd sl clkx trcxln por ns
 Ls-AA
 Ls-crm tan fxln mhd/dns no por
 Ls-crm/tan f/mxln s/mhd no por sm Ls-crm/wt fxln clkx
 Ls-crm/tan fxln mhd/dns no por
 Ls-AA

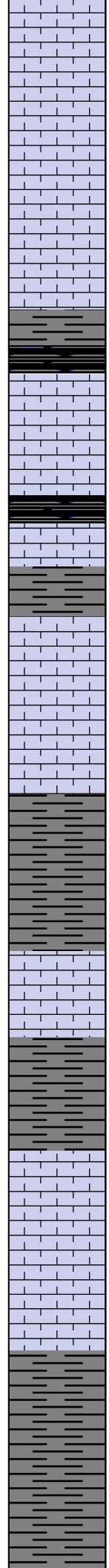
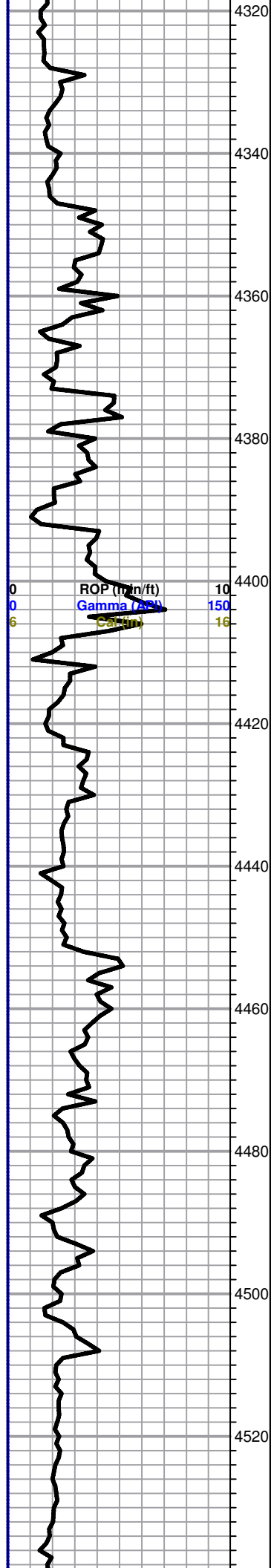




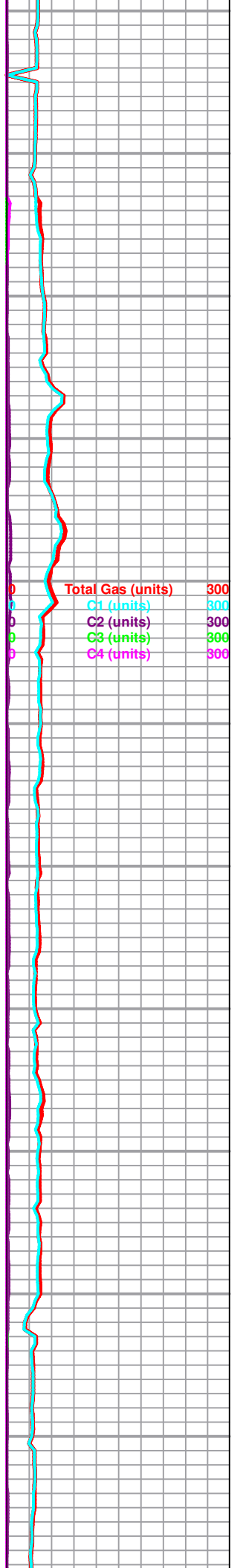
Ls-tan/lt gry fxln trc xln por ns
 Ls-tan/lt gry fxln dns no por
 Ls-tan f/mxln mhd sl fos no por
 Ls-AA
 Ls-tan f/mxln mhs sl fos no por
 Ls-AA
 Ls-AA
 Ls-tan/gry f/mxln mhd/dns sl fos no por
 -----King Hill 4177 -1734-----
 Sh-blk carb
 Ls-tan/gry f/mxln mhd/dns sl for no por
 Ls-AA
 Ls-crm/tan f/mxln soft sl clky trc xln por ns
 Ls-crm/tan f/mxln mhd sl fos no por
 Ls-AA
 Ls-crm/tan fxln mhd/dns sl fos no por
 Ls-AA
 Ls-lt gry/tan f/mxln mhd/dns sl fos no por
 Ls-AA
 Ls-lt gry/crm/tan f/mxln mhd/dns sl fos no por
 Ls-lt gry/tan f/mxln dns no por
 Sh-gry/dk gry/slty
 Sh-AA
 Sh-AA
 Ls-tan/lt gry fxln sm mxln mhd no por

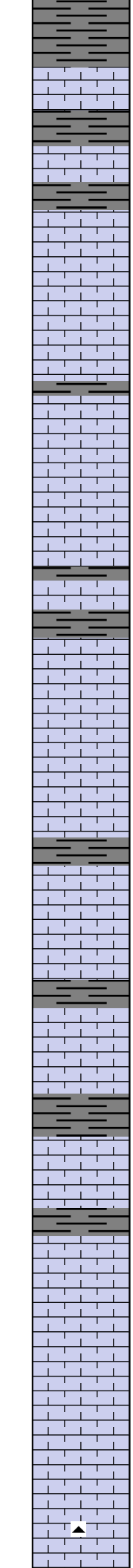
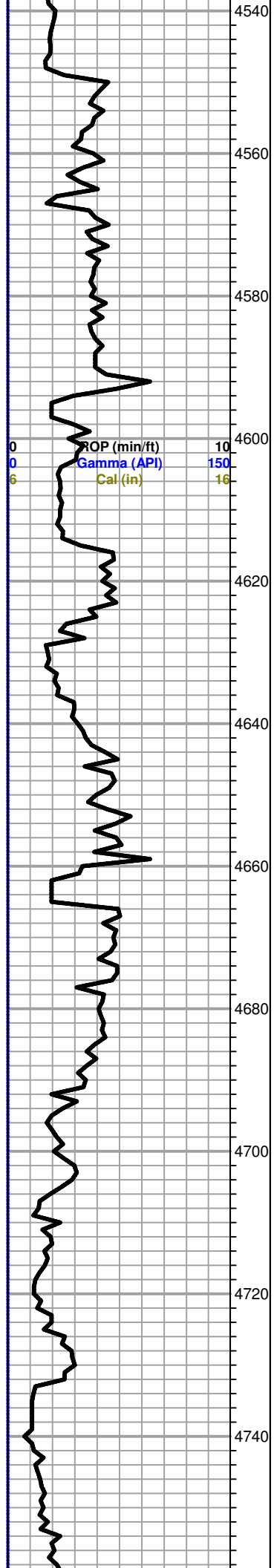


Mud Data at
 4280'
 Wt 9.2 Vis
 55 WL
 11.6 pH
 10 Chl
 9100 Sol
 5.9% YP 15

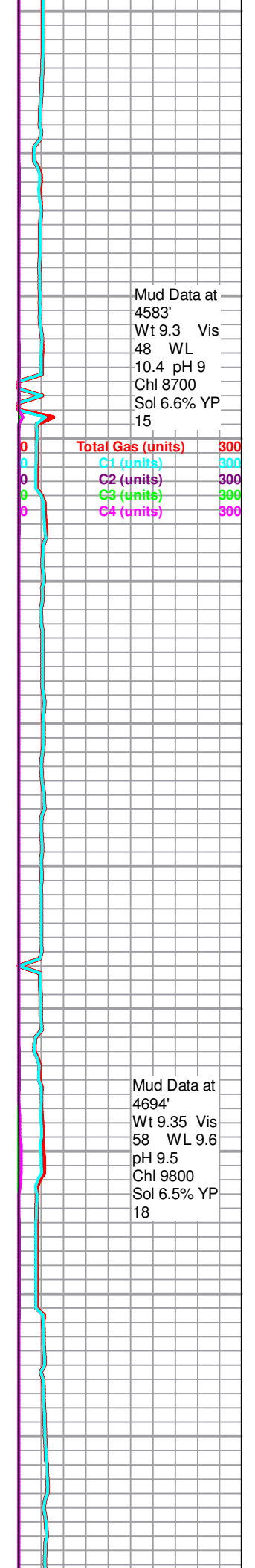


Ls-crm/tan f/mxln mhd no por
 Ls-lt gry/crm fxln mhd no por
 Ls-AA
 Ls-lt gry/crm fxln dns no por
 Ls-AA
 Sh-gry/dk gry
 Sh-blk carb
 Ls-tan/lt gry fxln dns no por
 Ls-AA
 -----Heebner 4388 -1945-----
 Sh-blk carb
 Ls-tan/lt gry fxln dns no por
 Sh-gry/dk gry
 -----Toronto 4405 -1962-----
 Ls-crm/wt fxln s/mhd trc xln por ns
 Ls-AA
 Ls-crm fxln mhd/dns no pot
 -----Douglas 4430 -1987-----
 Sh-gry/dk gry
 Sh-AA
 Ls-crm fxln dns no por
 Sh-gry/dk gry
 Sh-AA
 Ls-tan/lt brn fxln dns no por
 Ls-tan/lt brn fxln mhd/dns no por
 Ls-tan fxln dns no por
 Ls-tan fxln mhd/dns no por
 Sh-gry/dk gry
 Sh-AA
 Sh-gry/dk gry





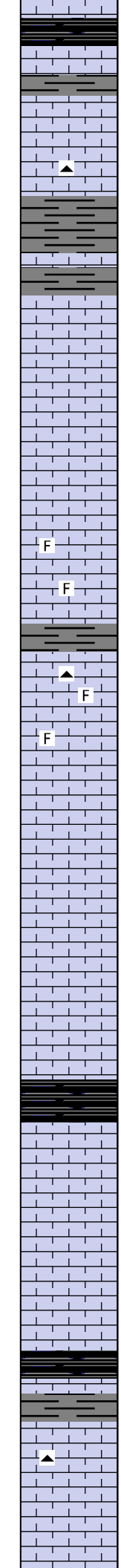
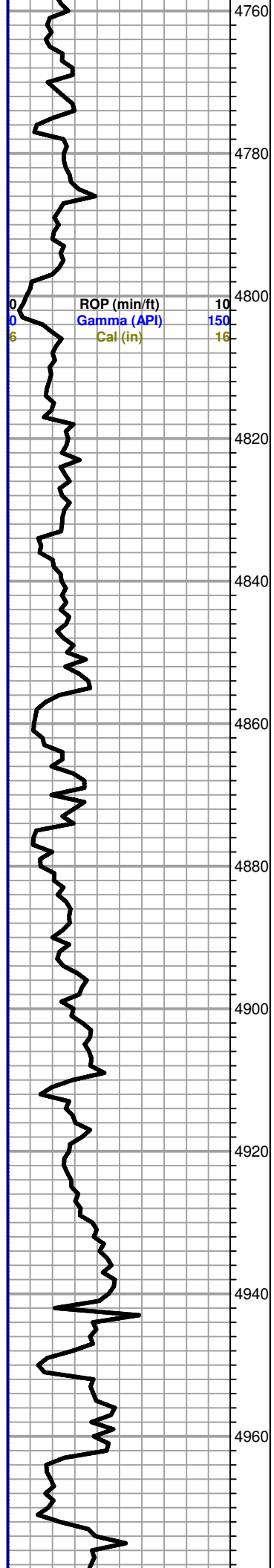
Sh-AA
-----Brown Lime 4548 -2105-----
Ls-brn fxln dns no por
Sh-gry/dk gry
Ls-tan/crm fxln dns no por
-----Lansing 4568 -2125-----
Ls-tan/crm/lt brn fxln dns no por
Ls-tan/gry f/mxln dns no por
Sh-gry/dk gry
Ls-crm/tan fxln mhd trc xln por ns
Ls-crm/tangry fxln mhd no por
Ls-AA
Sh-gry/dk gry
Ls-crm/tan fxln dns no por
Sh-gry/dk gry
Ls-crm/tan fxln mhd trc vug por ns
Ls-crm/tan fxln mhd/dns no por
Ls-crm/tan fxln dns no por
Ls-AA
Sh-gry/dk gry
Ls-tan/gry fxln mhd trc xln por ns
Ls-tan/gry f/mxln dns no por
Sh-gry/dk gry
Ls-tan/gry fxln dns no por
Sh-gry/dk gry
Ls-gry/brn f/mxln mhd no por
Sh-gry/dk gry
Ls-lt gry/tan fxln s/mhd clky trc vug por ns
Ls-AA
Ls-gry tan fxln dns no por
Ls-tan fxln soft sl fos fr pp por ns
Ls-tan/crm/gry fxln soft clky trc xln por ns
Ls-AA trc Chr-lt gry



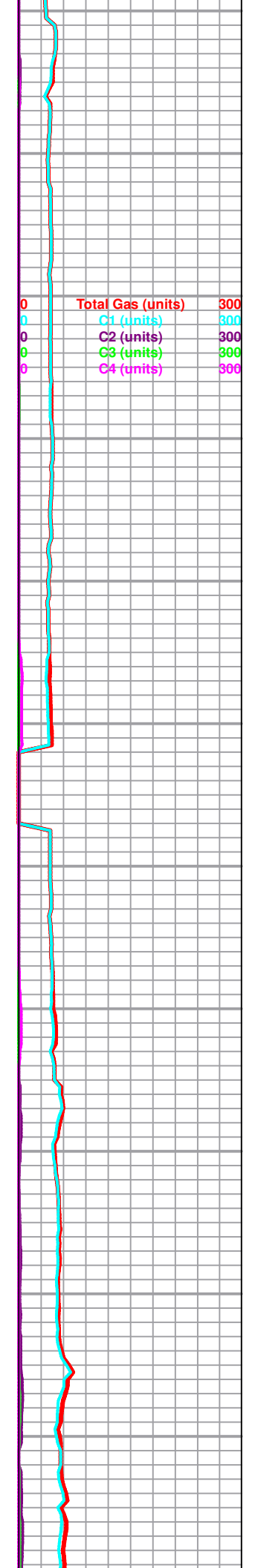
Mud Data at 4583'
Wt 9.3 Vis 48 WL 10.4 pH 9
Chl 8700 Sol 6.6% YP 15

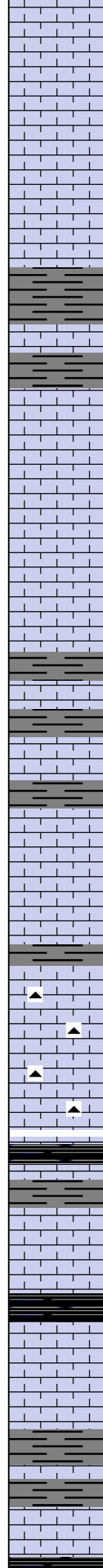
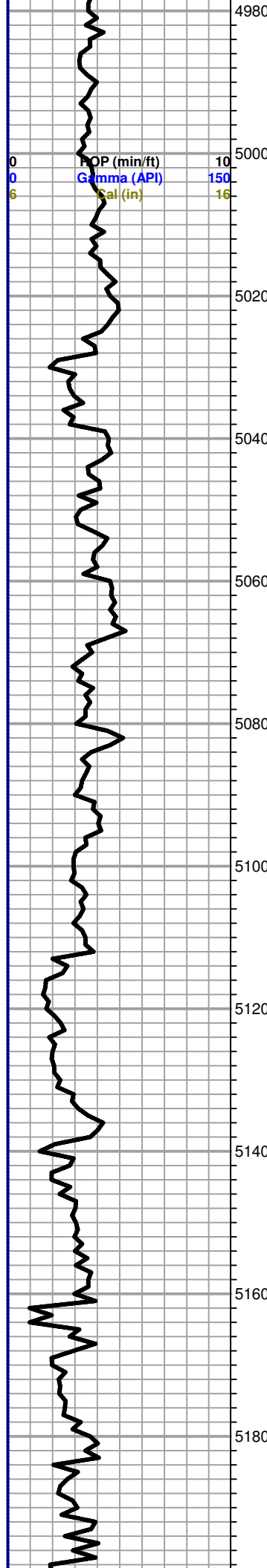
Total Gas (units)	300
C1 (units)	300
C2 (units)	300
C3 (units)	300
C4 (units)	300

Mud Data at 4694'
Wt 9.35 Vis 58 WL 9.6 pH 9.5
Chl 9800 Sol 6.5% YP 18



Ls-tan/gry/txln mhd no por trc Cht-AA
 Sh-blk carb
 Ls-gry/tan fxln dns no por
 Sh-gry/dk gry
 Ls-gry/tan f/mxln mhd trc xln por ns
 Ls-crm/tanf/mxln dns no por trc Cht-gry/lt gry
 Sh-gry/dk gry
 Ls-crm/tan fxln mhd/dns no por
 Sh-gry/dk gry
 Ls-tan/gry fxln s/mhd trc xln por ns
 Ls-tan/gry fxln mhd/dms no por
 Ls-AA
 Ls-crm/tan/gry fxln mhd/dns no por
 Ls-AA
 Ls-crm/tan fxln to sl blkly mhd sl fos sl clkly scat xln por ns
 Ls-gry/tan fxln mhd sl fos no por
 Sh-gry/dk gry
 Ls-tan f/mxln dns sl fos no por trc Cht-gry
 Ls-gry/tan f/mxln s/mhd sl fos trc xln por ns
 Ls-tan fxln dns no por
 Ls-tan fxln mhd no por
 Ls-tan fxln mhd/dns no por
 Ls-AA
 Ls-tan fxln dns no por
 -----Stark 4910 -2467-----
 Sh-blk carb
 -----Swope 4917 -2474-----
 Ls-gry/tan fxln dns no por
 Ls-AA
 Ls-gry fxln dns no por
 -----Hushpuckney 4947 -2504-----
 Sh-blk carb
 Ls-gry/brn fxln dns no por trc Cht-gry
 -----Hertha 4958 -2515-----
 Ls-gry/brn fxln dns no por trc Cht-gry
 Ls-crm/tan/brn fxln mhd sl clkly trc pp por ns
 Ls-gry/tan fxln dns no por

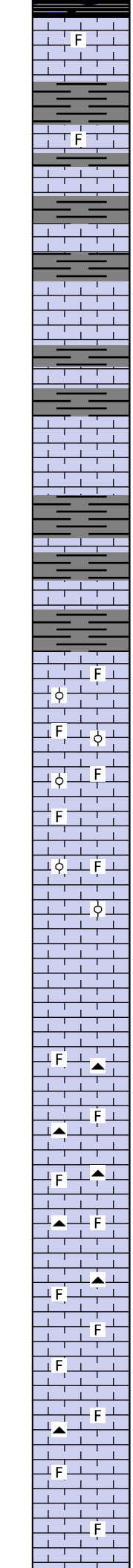
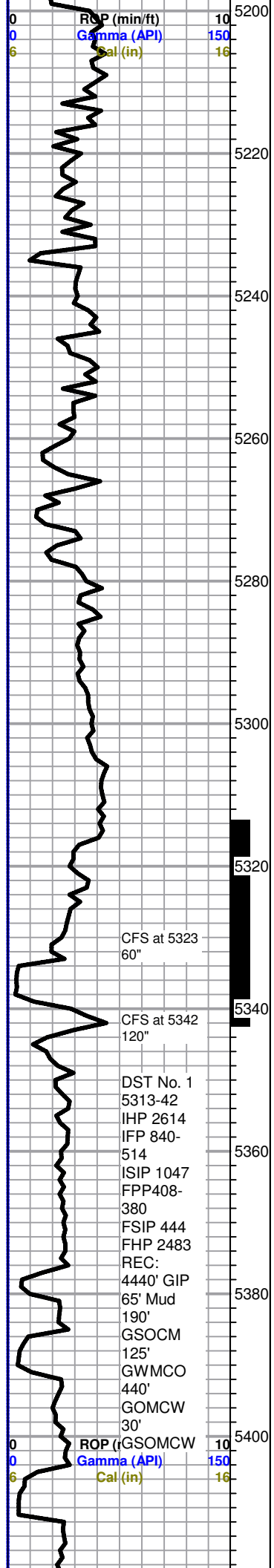




Ls-AA
Ls-gry/tan fxln dns no por
Ls-AA
Ls-AA
-----B/Kansas City 5016 -2573-----
Sh-gry/dk gry/blk
Ls-gry fxln dns no por
-----Marmaton 5033 -2590-----
Ls-gry fxln mhd trc xln por ns
Ls-gry/brn fxln dns no por
Ls-AA
Ls-gry/brn/tan fxln dns no por
Sh-gry/dk gry
Ls-gry/tan fxln dns no por
Sh-gry/dk gry
Ls-tan/crm fxln dns no por
Sh-gry/dk gry
Ls-tan/crm fxln dns sl clky no por
Ls-tan/crm fxln dns no por
-----Pawnee 5114 -2671-----
Ls-crm/tan fxln mhd sl clky no por sm Cht-lt gry/brn
Ls-crm/tan fxln mhd sl fos no por sm Cht-gry/brn/lt gry
Sh-blk carb
Ls-gry fxln dns no por
Sh-gry/dk gry
Ls-lt gry/tan fxln dns no por
-----Cherokee 5161 -2718-----
Sh-blk carb
Ls-crm/tan/brn fxln dns no por
Ls-AA
Sh-gry/dk gry/grn
Ls-tan/brn fxln dns no por
Sh-gry/dk gry/grn
Ls-crm/tan/lt gry fxln dns no por
Sh-blk carb

Total Gas (units) 300
C1 (units) 300
C2 (units) 300
C3 (units) 300
C4 (units) 300

Mud Data at
5119'
Wt 9.25
Vis 52
WL 8.8
pH 10.5
Chl 8100
Sol 6%
YP 17



Sh-blk carb

Ls-tan/brn fxln dns sl fos no por

Sh-gry/dk gry

Ls-tan/brn fxln dns no por few pcs Ls-tan/brn mhd fos trc stn

Sh-gry/dk gry

Ls-tan/brn fxln dns no por

Sh-gry/dk gry

Ls-gry fxln dns no por

Sh-gry/dk gry

Ls-AA

-----Inola 5257 -2814-----

Ls-tan/lt gry fxln mhd sl clkly no por

-----Morrow Shale 5268 -2825-----

Sh-gry/dk gry/blk

Sh-AA

Ls-tan fxln dns no por

Sh-gry/dk gry/mar/blk

-----Mississippi 5290 -2847-----

Ls-wt/lt tan f/mxln mhd fos ool and oom sl clkly no por

Ls-AA sm Ls-wt fxln s/mhd sl fos no por

Ls-wt cxln s/mhd sl fos sl ool no por

Ls-AA with one pce Ls-tan fxln mhd trc stn

Ls-brn fxln to sugary gd vug/inter xln por brn sat stn gd fluor gd cut fr odor gsfo

Ls-crm/tan fxln mhd/dns no por

Ls-crm/tan f/mxln mhd sl fos no por sm Cht-lt gry

Ls-AA sm Cht-lt gry/wt

Ls-crm/tan f/mxln s/mhd sl fos no por sm Cht-AA

Ls-AA sm Cht-lt gry/wt

Ls-crm/lt tan sm wt f/mxln soft sl fos sl clkly no por

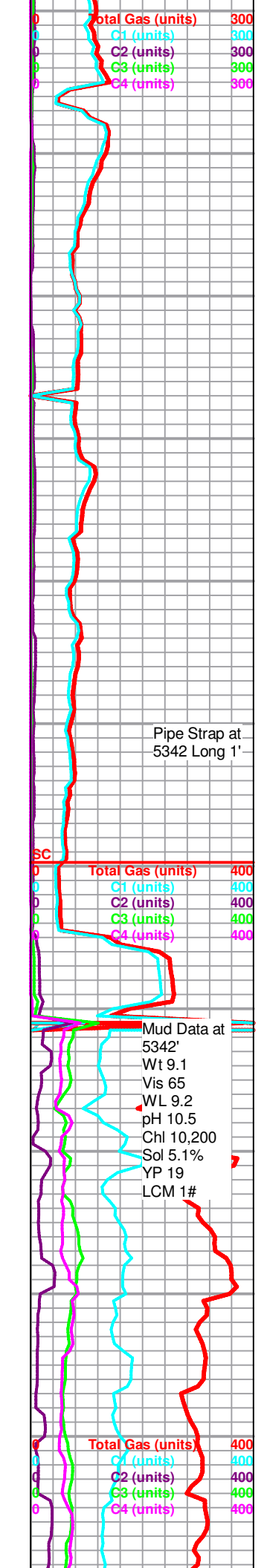
Ls-crm/lt tan f/mxln mhd sl fos no por sm Cht-wt/lt gry

Ls-crm/lt tan sm wt f/mxln soft sl fos sl clkly no por

Ls-crm/lt tan f/mxln mhd sl fos no por sm Cht-lt gry/wt

Ls-crm/lt tan sm wt s/mhd sl fos no por

Ls-crm/tan f/mxln mhd sl fos no por sm Cht-lt gry/wt

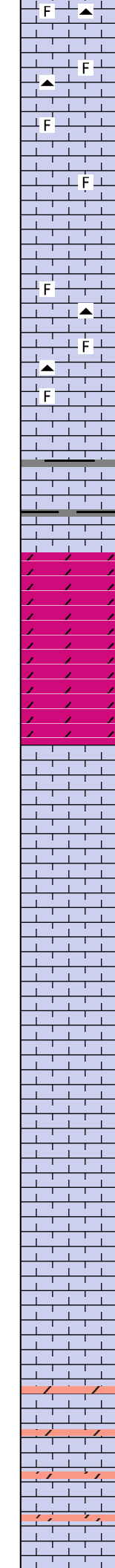
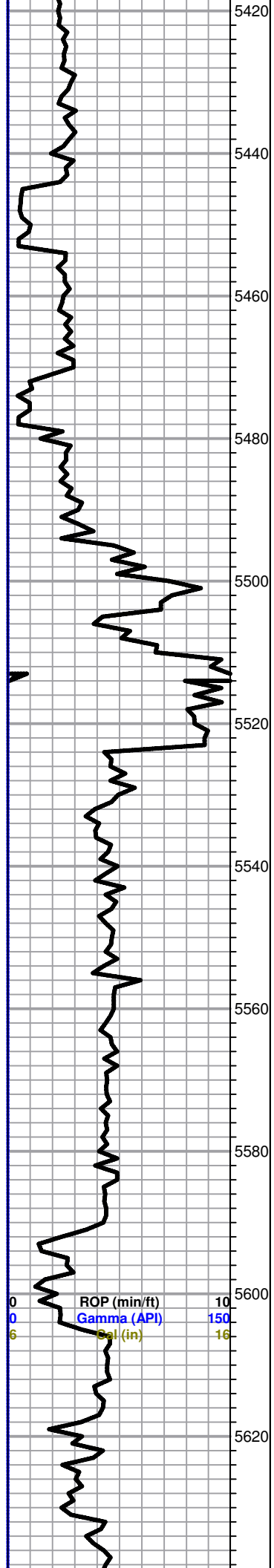


Pipe Strap at 5342 Long 1'

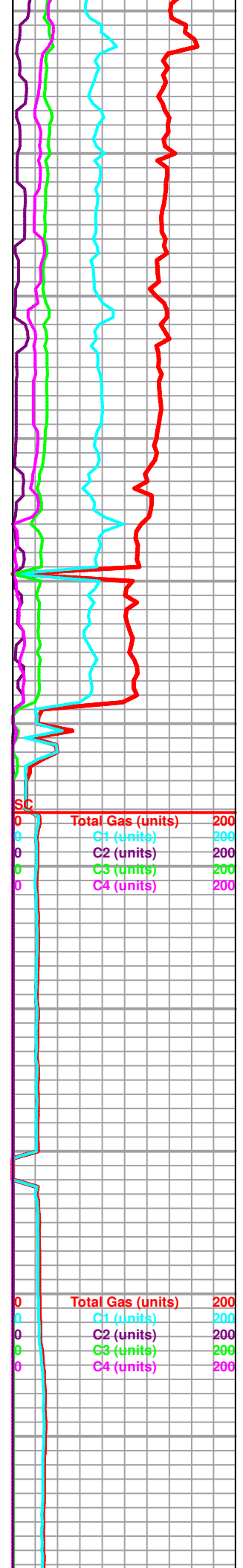
SC
Total Gas (units) 400
C1 (units) 400
C2 (units) 400
C3 (units) 400
C4 (units) 400

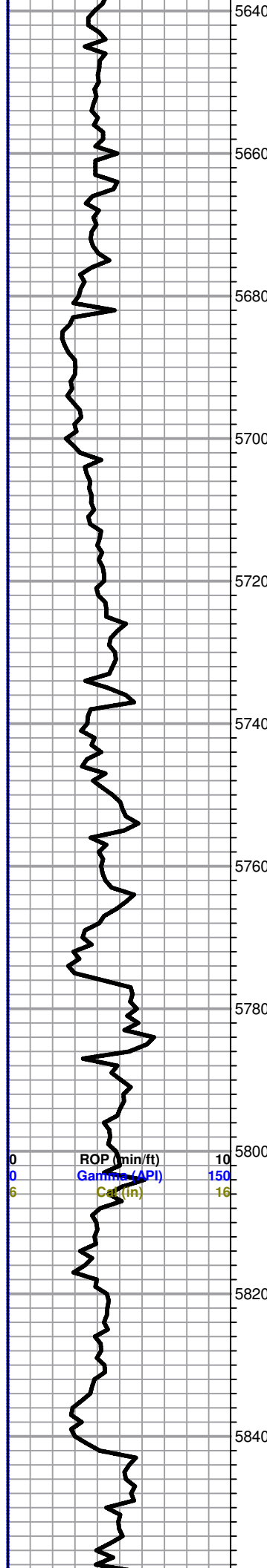
Mud Data at 5342'
Wt 9.1
Vis 65
WL 9.2
pH 10.5
Chl 10,200
Sol 5.1%
YP 19
LCM 1#

Total Gas (units) 400
C1 (units) 400
C2 (units) 400
C3 (units) 400
C4 (units) 400

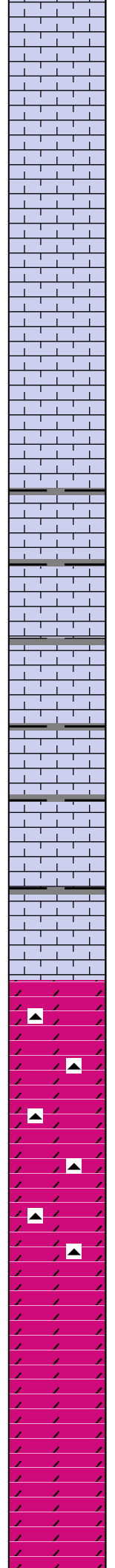


Ls-AA sm Cht-AA
 Ls-crm tan f/msln mhd sl fos no por
 Ls-crm/wt f/mxln soft sl clkly no por
 Ls-crm/tan f/mxln mhd sl fos no por less Cht
 Ls-AA less Cht
 Ls/crm/wt f/mxln s/mhd sl fos sl clkly no por
 Ls-crm/tan fxln mhd/dns no por interbd with Sh-gry/dk gry
 Ls-AA intertbf with Sh-AA
 Dolo-lt gry fxln dns no por
 Dolo-AA
 Dolo-AA
 Ls-crm fxln mhd/dns sl dolo no por
 Ls-AA
 Ls-crm/wt fxln mhd/dns sl clkly no por
 Ls-AA
 Ls-crm/wt fxln mhd/dns sl clkly no por
 Ls-AA
 Ls-tan/crm f/mxln trc inter xln por ns
 Ls-AA
 Ls-crm/tan fxln dns no por sm Dolo-tan fxln dns no por
 Ls-crm/tan f/mxln mhd no por sm Dolo-tan/gry fxln dns no por
 Ls-AA sm Dolo-AA



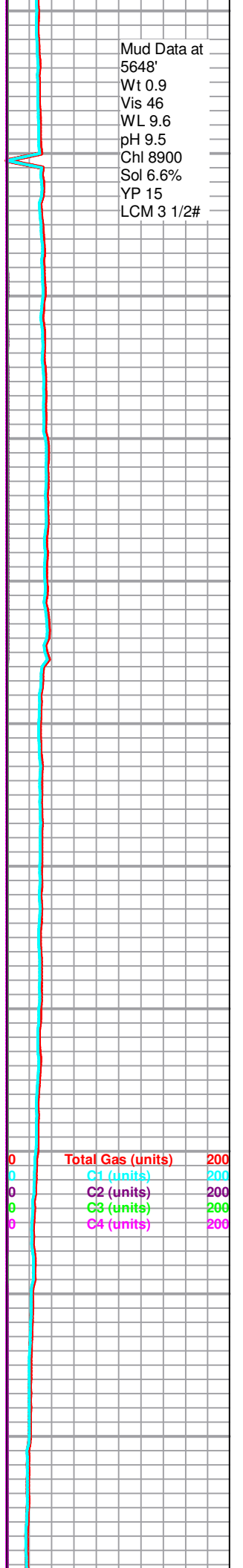


0 ROP (min/ft) 10
 0 Gamma (API) 150
 6 Ca (in) 16



Ls-crm/lt tan f/mxln dns no por
 Ls-AA
 Ls-AA
 Ls-crm/lt tan f/mxln dns no por
 Ls-AA
 Ls-wt/crm fxln s/mhd clkly no por
 Ls-wt/crm fxln sm mxln s/mhd clkly no por
 Ls-wt/lt gry fxln dns no por interbd with Sh/gry/dk gry
 Ls-AA interbd with Sh-AA
 Ls-crm/lt gry fxln dns no por interbd with Sh-gry/dk gry
 Ls-AA interbd with Sh-AA
 Ls-AA interbd with Sh-AA
 Ls-gry fxln sm mxln mhs sl clkly no por
 Ls-gry fxln dns no por
 Ls-gry fxln mhd/dns sl clkly no por
 -----Cowley Facies 5776 -3333-----
 Dolo-crm f/mxln to sl suc dns sl glau no por sm Cht-lt gry trans
 Dolo-AA sm Cht-AA
 Dolo-gry mxln to sl suc dns sl glau no por sm Cht-lt gry trans
 Dolo-AA sm Cht-AA
 Dolo-lt gry/crm f/mxln to sl suc no por
 Dolo-AA
 Dolo-lt gry/crm f/mxln to sl suc no por
 Dolo-AA

Mud Data at
 5648'
 Wt 0.9
 Vis 46
 WL 9.6
 pH 9.5
 Chl 8900
 Sol 6.6%
 YP 15
 LCM 3 1/2#



0 Total Gas (units) 200
 0 C1 (units) 200
 0 C2 (units) 200
 0 C3 (units) 200
 0 C4 (units) 200

