



**TRILOBITE  
TESTING, INC**

# DRILL STEM TEST REPORT

Eagle Creek Corporation  
150 N Main STE 905  
Wichita, KS 67202-1317  
ATTN: Bob O'Dell

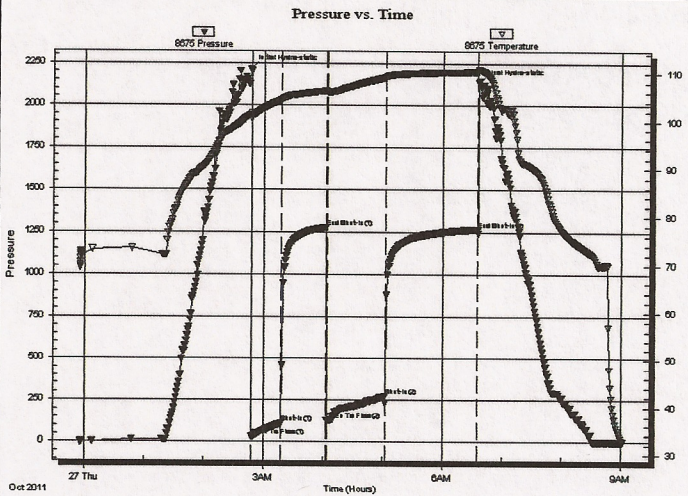
**18-17s-34wScott, KS**  
**Barnhart #2-18**  
Job Ticket: 44336      **DST#: 1**  
Test Start: 2011.10.26 @ 23:55:00

## GENERAL INFORMATION:

Formation: **Marmaton "A"**  
Deviated: No Whipstock: ft (KB)  
Time Tool Opened: 02:47:30  
Time Test Ended: 09:01:00  
Interval: **4392.00 ft (KB) To 4435.00 ft (KB) (TVD)**  
Total Depth: 4435.00 ft (KB) (TVD)  
Hole Diameter: 7.88 inches Hole Condition: Fair  
Test Type: Conventional Bottom Hole (Initial)  
Tester: Jace McKinney  
Unit No: 28  
Reference Elevations: 3084.00 ft (KB)  
3074.00 ft (CF)  
KB to GR/CF: 10.00 ft

**Serial #: 8675      Inside**  
Press@RunDepth: 271.46 psig @ 4393.00 ft (KB)      Capacity: 8000.00 psig  
Start Date: 2011.10.26      End Date: 2011.10.27      Last Calib.: 2011.10.27  
Start Time: 23:55:31      End Time: 09:01:30      Time On Btm: 2011.10.27 @ 02:46:45  
Time Off Btm: 2011.10.27 @ 06:36:30

TEST COMMENT: B.O.B. in 11 min  
Built to 1/4" return blow  
B.O.B. in 11 1/2 min.  
Built to 1/4" return blow



## PRESSURE SUMMARY

Time (Min.)	Pressure (psig)	Temp (deg F)	Annotation
0	2213.83	101.38	Initial Hydro-static
2	31.71	100.53	Open To Flow (1)
32	109.95	104.31	Shut-In (1)
76	1277.31	106.29	End Shut-In (1)
77	130.45	105.99	Open To Flow (2)
136	271.46	109.14	Shut-In (2)
229	1267.52	110.35	End Shut-In (2)
230	2135.22	110.87	Final Hydro-static

## Recovery

Length (ft)	Description	Volume (bbl)
0.00	270 feet gas in pipe	0.00
226.00	100% Clean Oil	3.17
186.00	mcgo 10%M 30%G 60%O	2.61
124.00	mcgo 20%M 40%G 40%O	1.74

## Gas Rates

Choke (inches)	Pressure (psig)	Gas Rate (Mcf/d)



**TRILOBITE TESTING, INC**

## DRILL STEM TEST REPORT

Eagle Creek Corporation

18-17s-34wScott, KS

150 N Main STE 905  
Wchita, KS 67202-1317

Barnhart #2-18

Job Ticket: 44337

DST#: 2

ATTN: Bob O'Dell

Test Start: 2011.10.27 @ 22:15:00

### GENERAL INFORMATION:

Formation: **Marmaton "C-D"**

Deviated: No Whipstock: ft (KB)

Time Tool Opened: 00:26:30

Time Test Ended: 07:00:30

Test Type: Conventional Bottom Hole (Reset)

Tester: Jace McKinney

Unit No: 28

Interval: **4445.00 ft (KB) To 4478.00 ft (KB) (TVD)**

Total Depth: 4478.00 ft (KB) (TVD)

Hole Diameter: 7.88 inches Hole Condition: Fair

Reference Elevations: 3084.00 ft (KB)

3074.00 ft (CF)

KB to GR/CF: 10.00 ft

Serial #: **8675**

Inside

Press@RunDepth: 348.10 psig @ 4446.00 ft (KB)

Start Date: 2011.10.27

End Date: 2011.10.28

Start Time: 22:15:01

End Time: 07:00:30

Capacity: 8000.00 psig

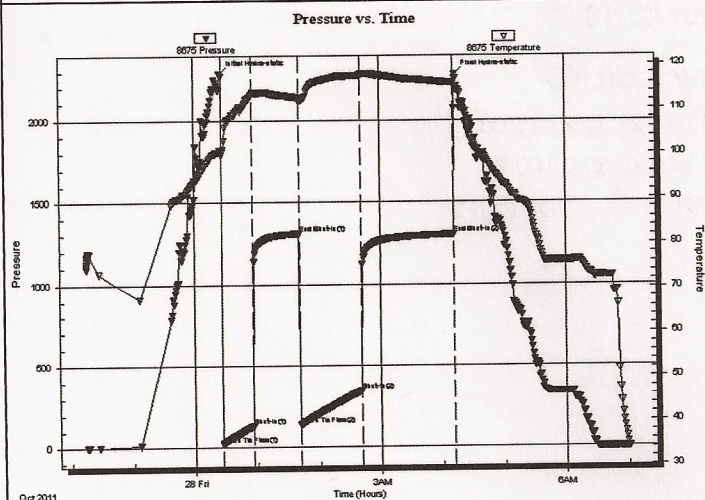
Last Calib.: 2011.10.28

Time On Btm: 2011.10.28 @ 00:25:15

Time Off Btm: 2011.10.28 @ 04:12:45

TEST COMMENT: B.O.B. in 13 1/2 min.  
No return blow  
B.O.B. in 12 1/2 min.  
No return blow

### PRESSURE SUMMARY



Time (Min.)	Pressure (psig)	Temp (deg F)	Annotation
0	2286.33	100.55	Initial Hydro-static
2	22.14	99.63	Open To Flow (1)
32	132.05	113.23	Shut-In(1)
76	1311.03	112.52	End Shut-In(1)
77	137.08	111.77	Open To Flow (2)
137	348.10	117.51	Shut-In(2)
227	1304.40	115.83	End Shut-In(2)
228	2278.48	114.87	Final Hydro-static

### Recovery

Length (ft)	Description	Volume (bbl)
124.00	mcw 40%M60%W	1.74
598.00	mcw 10%M90%W	8.39

\* Recovery from multiple tests

### Gas Rates

Choke (inches)	Pressure (psig)	Gas Rate (Mcf/d)



**TRILOBITE TESTING, INC**

## DRILL STEM TEST REPORT

Eagle Creek Corporation

**18-17s-34wScott,KS**

150 N Main STE 905  
Wichita, KS 67202-1317

**Barnhart #2-18**

Job Ticket: 44338

**DST#: 3**

ATTN: Bob O'Dell

Test Start: 2011.10.28 @ 18:45:00

### GENERAL INFORMATION:

Formation: **Pawnee**

Deviated: No Whipstock: ft (KB)

Time Tool Opened: 21:13:30

Time Test Ended: 02:49:30

Test Type: Conventional Bottom Hole (Reset)

Tester: Jace McKinney

Unit No: 28

Interval: **4496.00 ft (KB) To 4530.00 ft (KB) (TVD)**

Reference Elevations: 3084.00 ft (KB)

Total Depth: 4530.00 ft (KB) (TVD)

3074.00 ft (CF)

Hole Diameter: 7.88 inches Hole Condition: Fair

KB to GR/CF: 10.00 ft

**Serial #: 8675**

Inside

Press@RunDepth: 37.01 psig @ 4497.00 ft (KB)

Capacity: 8000.00 psig

Start Date: 2011.10.28

End Date: 2011.10.29

Last Calib.: 2011.10.29

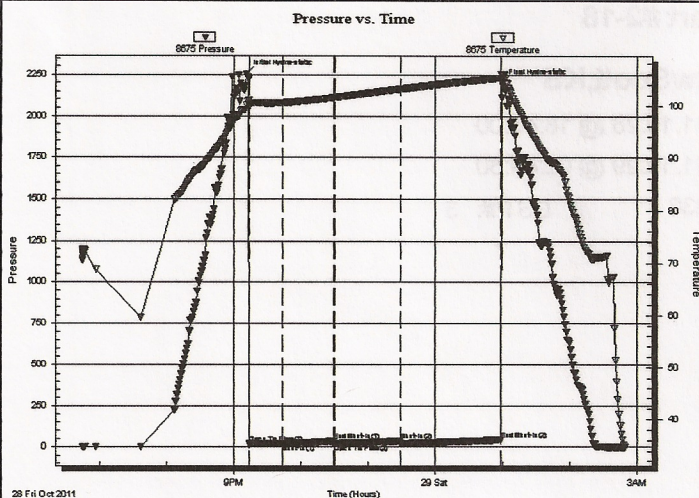
Start Time: 18:45:01

End Time: 02:49:30

Time On Btmr: 2011.10.28 @ 21:11:15

Time Off Btmr: 2011.10.29 @ 00:59:30

TEST COMMENT: Built to 1/4" blow  
No return blow  
No blow  
No return blow



### PRESSURE SUMMARY

Time (Min.)	Pressure (psig)	Temp (deg F)	Annotation
0	2255.95	99.99	Initial Hydro-static
3	17.55	99.49	Open To Flow (1)
33	19.23	100.48	Shut-In(1)
78	35.63	101.49	End Shut-In(1)
79	19.25	101.51	Open To Flow (2)
138	37.01	103.16	Shut-In(2)
228	43.54	105.32	End Shut-In(2)
229	2202.15	105.91	Final Hydro-static

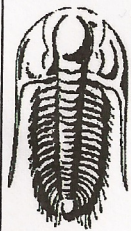
### Recovery

Length (ft)	Description	Volume (bbl)
1.00	100% Mud	0.01

\* Recovery from multiple tests

### Gas Rates

Choke (inches)	Pressure (psig)	Gas Rate (Mcf/d)



**TRILOBITE TESTING, INC**

# DRILL STEM TEST REPORT

Eagle Creek Corporation

**18-17s-34wScott,KS**

150 N Main STE 905  
Wichita, KS 67202-1317

**Barnhart #2-18**

Job Ticket: 44339

**DST#: 4**

ATTN: Bob O'Dell

Test Start: 2011.10.30 @ 11:40:00

## GENERAL INFORMATION:

Formation: **Johnson**

Deviated: No Whipstock: ft (KB)

Time Tool Opened: 13:28:45

Time Test Ended: 17:52:15

Test Type: Conventional Bottom Hole (Reset)

Tester: Jace McKinney

Unit No: 28

Interval: **4658.00 ft (KB) To 4710.00 ft (KB) (TVD)**

Total Depth: 4710.00 ft (KB) (TVD)

Hole Diameter: 7.88 inches Hole Condition: Fair

Reference Elevations: 3084.00 ft (KB)

3074.00 ft (CF)

KB to GR/CF: 10.00 ft

**Serial #: 8675**

**Inside**

Press@RunDepth: 25.18 psig @ 4659.00 ft (KB)

Start Date: 2011.10.30

End Date: 2011.10.30

Start Time: 11:40:01

End Time: 17:52:15

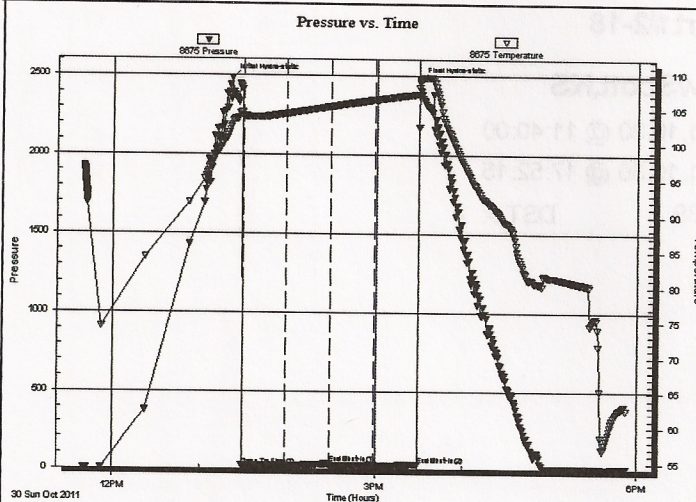
Capacity: 8000.00 psig

Last Calib.: 2011.10.30

Time On Btm: 2011.10.30 @ 13:21:15

Time Off Btm: 2011.10.30 @ 15:30:00

TEST COMMENT: Weak surface blow  
No return blow  
No blow  
No return blow



## PRESSURE SUMMARY

Time (Min.)	Pressure (psig)	Temp (deg F)	Annotation
0	2486.03	102.79	Initial Hydro-static
8	20.27	103.81	Open To Flow (1)
38	21.20	104.33	Shut-In(1)
68	33.03	105.39	End Shut-In(1)
68	20.44	105.40	Open To Flow (2)
98	25.18	106.35	Shut-In(2)
128	28.41	107.19	End Shut-In(2)
129	2474.12	108.79	Final Hydro-static

## Recovery

Length (ft)	Description	Volume (bbl)
1.00	100% Mud	0.01

\* Recovery from multiple tests

## Gas Rates

Choke (inches)	Pressure (psig)	Gas Rate (Mcf/d)