

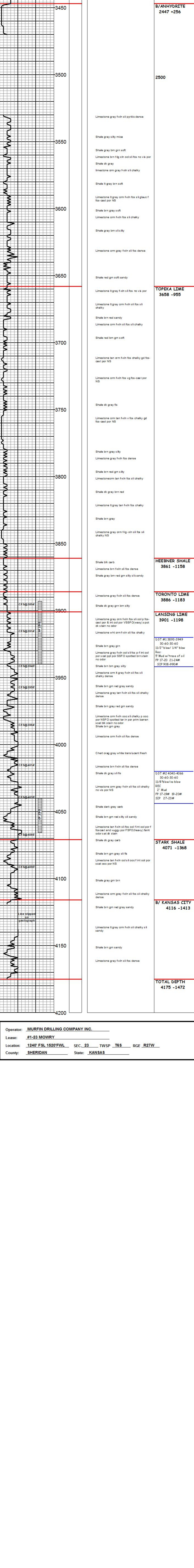
# GEOLOGIST'S REPORT

OPERATOR <b>MURFIN DRILLING COMPANY INC.</b>		ELEVATIONS	
LEASE <b>#1-23 MOWRY</b>		KB <b>2703</b>	
LOCATION <b>1240' FSL 1520' FWL</b>		GL <b>2598'</b>	
SEC. <b>23</b>	TWSP <b>T6S</b>	RGE <b>R27W</b>	ALL MEASUREMENTS FROM K.B.
COUNTY <b>SHERIDAN</b>	STATE <b>KANSAS</b>		
FIELD <b>WILDCAT</b>	CASING RECORD		
CONTRACTOR <b>MURFIN DRILLING CO.</b>	RIG NO. <b>#8</b>	Conductor	
COMMENCED <b>DEC 8, 2011</b>	COMPLETED <b>DEC 15, 2011</b>		
MUD DISPLACED <b>3330'</b>	MUD TYPE <b>CHEMICAL</b>	Surface <b>8 5/8" @ 382'</b>	
DRILLING TIME (HRT) FROM _____ TO _____	3530' TO 4175'	Production	
SAMPLES SAVED FROM _____	3530' TO 4175'		
SAMPLES EXAMINED FROM _____	3530' TO 4175'		
GEOLOGICAL SUPERVISION FROM <b>3500'</b>	TO <b>4175'</b>	ELECTRICAL SURVEYS:	
GEOLOGIST ON WELL <b>STEPHEN J MILLER</b>	LOG TECH		
FORMATION		DUAL IND.	
NAME	LOG	TOP	SAMPLE
	DATE	DATE	DATE
ANHYDRITE	2416	+287	2415
ANHYDRITE	2449	+254	2447
ANHYDRITE	2498	-955	2497
TOPEKA LIME	2668	-955	2666
HEEBNER SHALE	3860	-1157	3861
HEEBNER SHALE	3888	-1185	3886
TORONTO LIME	3902	-1199	3901
LANSING LIME	3902	-1199	3901
LANSING LIME	4073	-1370	4071
STARK SHALE	4073	-1370	4071
STARK SHALE	4117	-1414	4116
STARK SHALE	4117	-1414	4116
TOTAL DEPTH	4178	-1475	4175

API	15-179-21292
Drilling Fluids:	MORGAN MUD
Drill Stem Testing:	TRILOBITE TESTING
Gas Trailer:	NONE
Reserve Pit Chlorides:	1200 PPM

REMARKS

DRILL TIME (MIN/FT)	DEPTH	SAMPLE DESCRIPTIONS	REMARKS
---------------------	-------	---------------------	---------



Operator: **MURFIN DRILLING COMPANY INC.**

Lease: **#1-23 MOWRY**

Location: **1240' FSL 1520' FWL** SEC. **23** TWSP **T6S** RGE **R27W**

County: **SHERIDAN** State: **KANSAS**