



TRILOBITE TESTING, INC.

DRILL STEM TEST REPORT

McCoy Petroleum Corp.
 8080 E. Central, Suite 300
 Wichita, Ks 67206
 ATTN: Jerry Smith

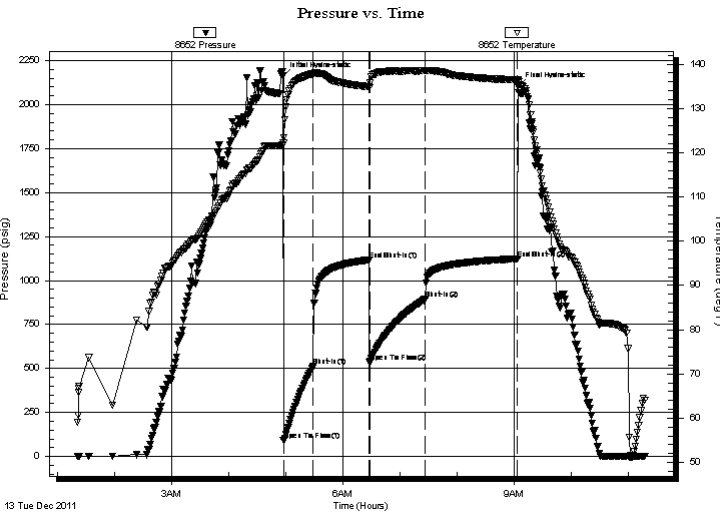
8 20s 27w Lane, Ks
M-M Diel A #1-8
 Job Ticket: 45373 **DST#: 1**
 Test Start: 2011.12.13 @ 01:21:00

GENERAL INFORMATION:

Formation: **Lansing K**
 Deviated: No Whipstock: ft (KB)
 Time Tool Opened: 04:57:45
 Time Test Ended: 11:18:15
 Interval: **4282.00 ft (KB) To 4330.00 ft (KB) (TVD)**
 Total Depth: 4330.00 ft (KB) (TVD)
 Hole Diameter: 7.88 inches Hole Condition: Good
 Test Type: Conventional Bottom Hole (Initial)
 Tester: Bradley Walter
 Unit No: 40
 Reference Elevations: 2743.00 ft (KB)
 2731.00 ft (CF)
 KB to GR/CF: 12.00 ft

Serial #: 8652 Inside
 Press @ Run Depth: 895.00 psig @ 4283.00 ft (KB) Capacity: 8000.00 psig
 Start Date: 2011.12.13 End Date: 2011.12.13 Last Calib.: 2011.12.13
 Start Time: 01:21:05 End Time: 11:18:15 Time On Btm: 2011.12.13 @ 04:57:00
 Time Off Btm: 2011.12.13 @ 09:04:45

TEST COMMENT: IF: BOB @ 1 minute.
 IS: No return.
 FF: BOB @ 3 minutes
 FS: No return.



PRESSURE SUMMARY

Time (Min.)	Pressure (psig)	Temp (deg F)	Annotation
0	2162.21	121.76	Initial Hydro-static
1	90.66	123.41	Open To Flow (1)
32	511.04	137.73	Shut-In(1)
91	1115.28	134.85	End Shut-In(1)
91	533.94	134.72	Open To Flow (2)
150	895.00	138.49	Shut-In(2)
247	1124.44	136.39	End Shut-In(2)
248	2103.15	136.40	Final Hydro-static

Recovery

Length (ft)	Description	Volume (bbl)
2600.00	mcw 3m 97w (oil spots)	25.86

Gas Rates

	Choke (inches)	Pressure (psig)	Gas Rate (Mcf/d)



**TRILOBITE
TESTING, INC.**

DRILL STEM TEST REPORT

FLUID SUMMARY

McCoy Petroleum Corp.
8080 E. Central, Suite 300
Wichita, Ks 67206
ATTN: Jerry Smith

8 20s 27w Lane, Ks
M-M DieI A #1-8
Job Ticket: 45373 **DST#: 1**
Test Start: 2011.12.13 @ 01:21:00

Mud and Cushion Information

Mud Type: Gel Chem	Cushion Type:	Oil API: 0 deg API
Mud Weight: 9.00 lb/gal	Cushion Length: ft	Water Salinity: 70000 ppm
Viscosity: 42.00 sec/qt	Cushion Volume: bbl	
Water Loss: 9.58 in ³	Gas Cushion Type:	
Resistivity: ohm.m	Gas Cushion Pressure: psig	
Salinity: 4600.00 ppm		
Filter Cake: 1.00 inches		

Recovery Information

Recovery Table

Length ft	Description	Volume bbl
2600.00	mcw 3m 97w (oil spots)	25.863

Total Length: 2600.00 ft Total Volume: 25.863 bbl

Num Fluid Samples: 0 Num Gas Bombs: 0 Serial #:

Laboratory Name: Laboratory Location:

Recovery Comments: rw is .120 @ 65F = 70000ppm

Serial #: 8652

Inside

McCoy Petroleum Corp.

M-M Diel A #1-8

DST Test Number: 1

Pressure vs. Time

