



JERRY A. SMITH

CERTIFIED PETROLEUM GEOLOGIST

GEOLOGIST'S REPORT DRILLING TIME and SAMPLE LOG

COMPANY: McCoy Petroleum Corporation		ELEVATIONS	
LEASE: M-M Diel Unit "A" #1-8		K.B. 2743	
FIELD: Wildcat		D.F.	
LOCATION: NW-NW-SE		G.L. 2733	
SEC. 8	TWSP. 20	RNG. 27W	Measurements Are All From:
COUNTY: Lane	STATE: KS		KB
CONTRACTOR: VAL Energy, Rig #7		CASING	
SPUD: 12/07/11	COMP. 12/16/11	SURFACE: 8 5/8" @ 228'	
RTD. 4730	LTD. 4735	PRODUCTION: D & A	
MUD UP: 3213	TYPE MUD: Chemical		ELECTRICAL SURVEYS
API No. 15-101-22334		Weatherford: DIL, DEN-S-NEU, MICRO	
SAMPLES SAVED FROM: 3800	TO: RTD		
DRILLING TIME KEPT FROM: 3800	TO: RTD		
SAMPLES EXAMINED FROM: 3800	TO: RTD		
GEOLOGICAL SUPERVISION FROM: 3750			
GEOLOGIST ON WELL: Jerry A. Smith			
FORMATION TOPS	LOG	SAMPLES	
ANHYDRITE	2034 (+709)	2034 (+709)	
HEEBNER	3968 (-1225)	3966 (-1223)	
LANSING	4010 (-1267)	4009 (-1266)	
STARK	4289 (-1546)	4289 (-1546)	
B/KANSAS CITY	4363 (-1625)	4366 (-1628)	
FT. SCOTT	4520 (-1777)	4524 (-1781)	
CHEROKEE	4544 (-1801)	4544 (-1801)	
MISSISSIPPIAN	4662(-1919)	4665 (-1922)	

LEGEND

Anhydrite	Salt	Sandstone	Shale	Carb sh	Limestone	Ool.Lime	Chert	Dolomite

LITHOLOGY	DRILLING TIME IN MINUTES PER FOOT Rate of Penetration Increases		SAMPLE DESCRIPTIONS	REMARKS
	DEPTH	5" 10" 15" 20" 25"		
				NO GAS DETECTOR D.S.T.'S (2): TRILOBITE MUD: MUD-CO
				S.H.T.'S:

225 1
3365' 3/4°
4330' 1 1/4°

2000

20

40

60

ANHYDRITE
2034 (+709) SMPL & LOG

B/ANHYDRITE
2068 (+675) SMPL
2070 (+673) LOG

2100

20

40

60

80

2200

VERT. LOG SCALE: 5" = 100'

3800

LM - LF - 14 Gy. Fr. - 74.
CHKY. No Vis. ♂.

LM - AA.

20

SH - DR Gy. w/ Saatt. LM -
20 - 24 Gy. Fr. Pass
DSE.

SH - DR Gy.

LM - LF - 14 Gy. Fr. - 74.
CHKY.

40

LM - AA w/ Saatt. CHKY -
20 Gy. Fr. S.M.P. DSE.

CHKY LM - AA.

60

LM - CRM, Gy. Fr. - 74.
74 Saatt. V.G.Y. D. AS

LM - CRM, Fr. CHKY.
Pass in Fr. No Vis. ♂.

80

LM - AA.

SH - BLK, CARB.

3900

ABD SH - LF - 14 Gy.

LM - CRM, LF Gy. Fr. - 74.
CHKY. Pass in Fr.
No Vis. ♂.

20

LM - CRM, LF Gy. Fr. - 74.
Pass. CHKY. No Vis.
♂.

40

LM - CRM, LF Gy. Fr. - 74.
Pass in Fr. CHKY.
No Vis. ♂.

LM - CRM, LF Gy. Fr. - 74.
CHKY. No Vis. ♂.

60

LM - AA.

SH - BLK, CARB.

HEEBNER
3966 (-1223) SMPL
2000 (1000) LCC

3968 (-1225) LOG

TORONTO
3984 (-1241) SMPL
3985 (-1242) LOG

LANSING
4009 (-1266) SMPL
4010 (-1267) LOG

MUNCIE CREEK
4190 (-1447) SMPL

LM = Gr - M Gr. Fx.
D.S.S.

SH - M -> DK Gr.

LM = Gr, Gr -> M Gr
Pass in PT.
Seat - PR -> GR VBY/
Mud P. NS.

SH - M -> DK Gr.

LM = Gray, Gr -> M Gr
Gr, D.S.S., SH, D.S.S.

LM = AA.

LM = AA.

SH - M -> DK Gr, Gr.

LM = Gray, Gr -> M Gr.
D.S.S.

SH - M Gr, Gr - Gr.

LM = Gr, Gr, Fx. Gr &
Pass in PT. No Vis.

LM = Gr, Gr -> M Gr, Fx.
Gr, Gr in PT. No Vis.

LM = AA w/ Seat - DK
Gr SH.

LM = Gr, Gr, Fx. Gr.
No Vis P.

LM = AA w/ Seat - Gr
Gr, D.S.S., SH, D.S.S.

LM = Gr, Gr -> M Gr, Fx.
Pass in PT. Gr.
No Vis P.

LM = AA.

SH - M -> DK Gr.

LM = Gr -> M Gr, Fx.
Pass in PT. Seat.
Gr, D.S.S., SH, D.S.S.
Gr, Gr in PT.
No Vis P.

LM = AA.

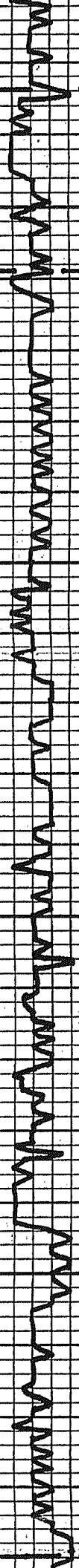
LM = AA.

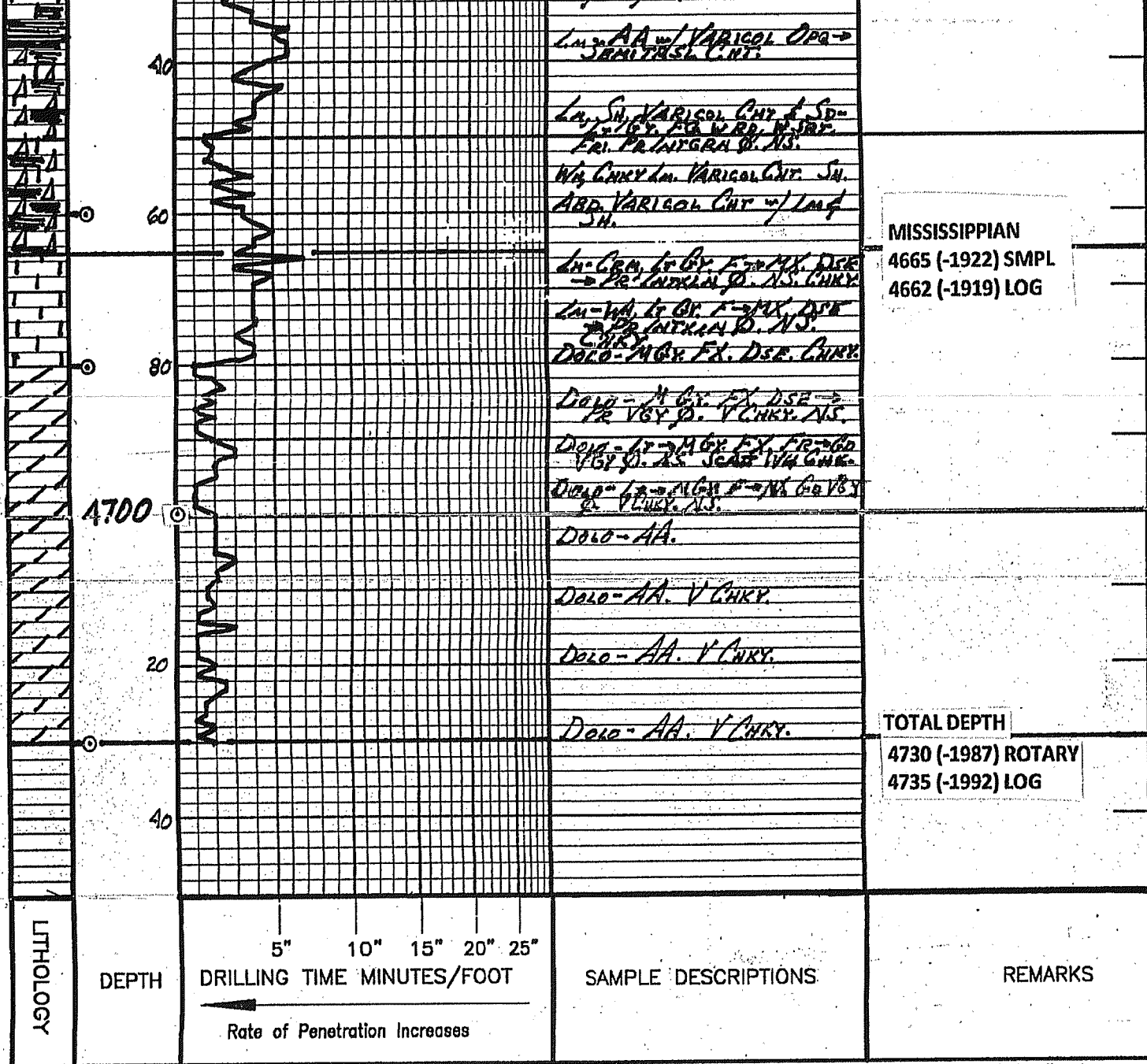
SH = Fx. Gr.

4000

4100

80
20
40
60
80
20
40
60
80





COMPANY McCoy Petroleum Corporation		ELEVATION 2743 KB	
LEASE M-M Diel Unit "A" #1-8			
LOCATION NW-NW-SE	SEC 8	TWP 20	RGE 27W
COUNTY	STATE KS		