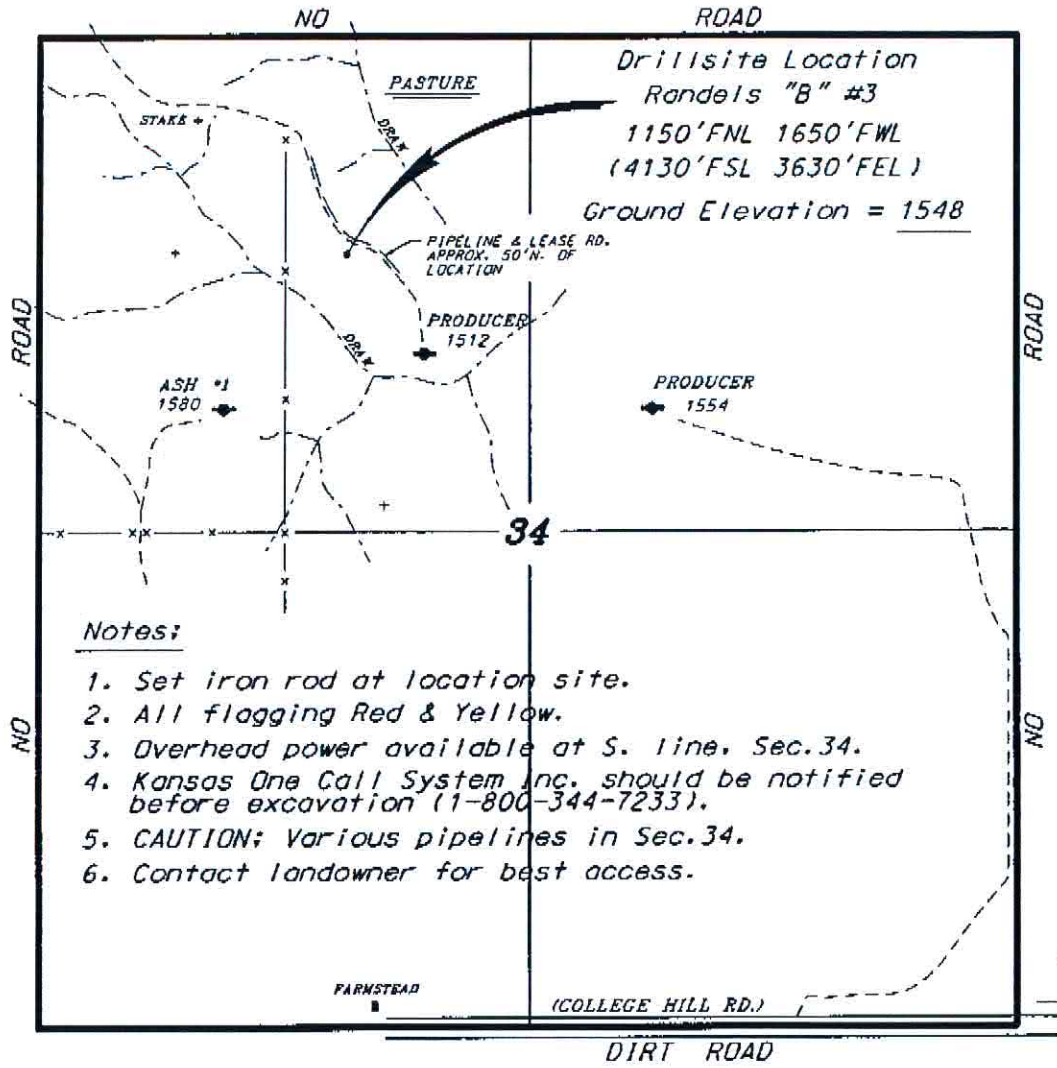


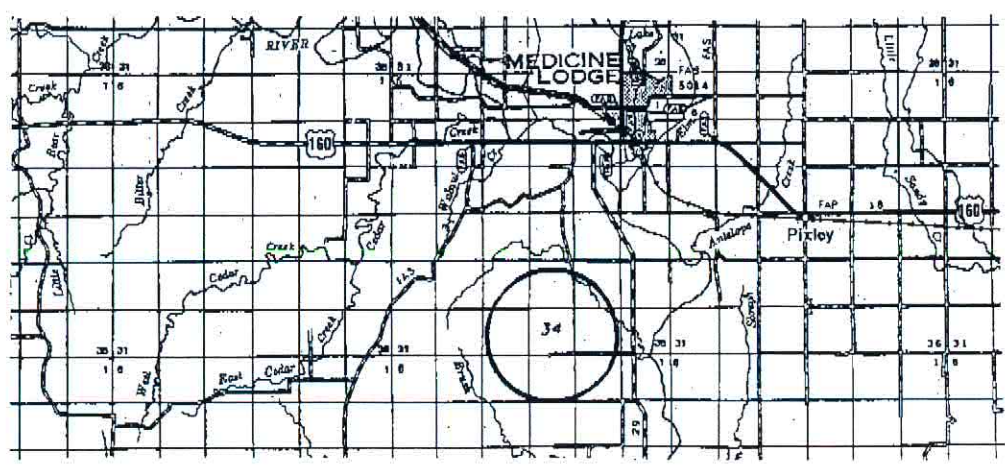
**GRIFFIN MANAGEMENT, LLC  
 RANDELS LEASE  
 NW.1/4, SECTION 34, T32S, R12W  
 BARBER COUNTY, KANSAS**



Notes:

1. Set iron rod at location site.
2. All flagging Red & Yellow.
3. Overhead power available at S. line, Sec.34.
4. Kansas One Call System Inc. should be notified before excavation (1-800-344-7233).
5. CAUTION; Various pipelines in Sec.34.
6. Contact landowner for best access.

1.25 MILES TO HIGHWAY 281



\* Controlling data is based upon the best maps and photographs available to us and upon a regular section of land containing 640 acres.  
 \* Approximate section lines were determined using the normal standard of care of oilfield surveyors practicing in the state of Kansas. The section corners, which establish the precise section lines, were not necessarily located, and the exact location of the drillsite location in the section is not guaranteed. Therefore, the operator securing this service and accepting this plot and all other parties relying thereon agree to hold Central Kansas Oilfield Services, Inc., its officers and employees harmless from all losses, costs and expenses and sole liabilities released from any liability from incidental or consequential damages.  
 \* Elevations derived from National Geodetic Vertical Datum.

Date January 18, 2012