

Revised BHL
1/24/12

TOPOGRAPHIC LAND SURVEYORS

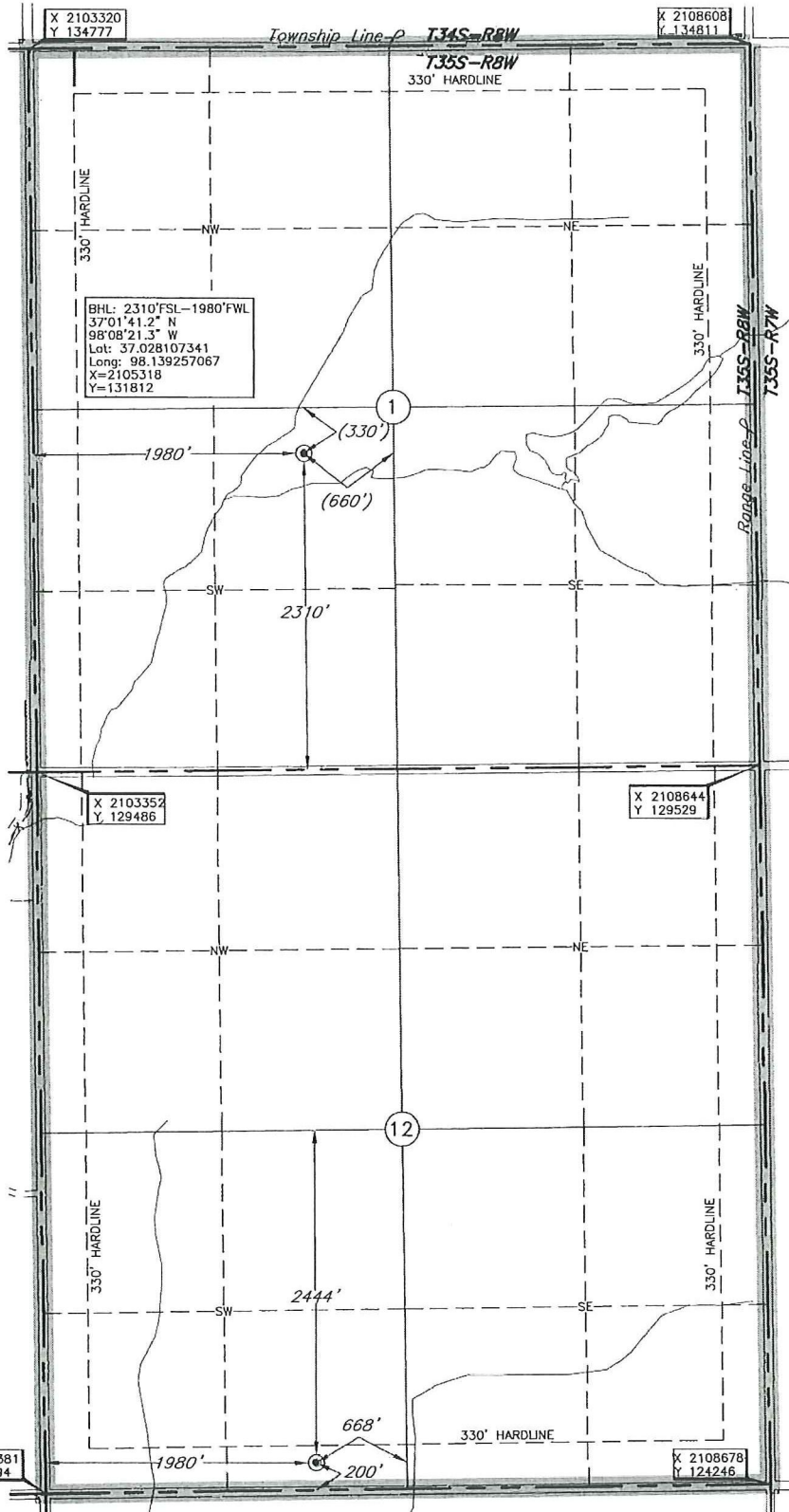
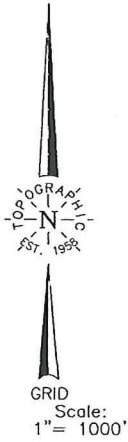
6709 NORTH CLASSEN BLVD., OKLA. CITY, OKLA. 73116 • LOCAL (405) 843-4847 • OUT OF STATE (800) 654-3219
Certificate of Authorization No. LS-99, Exp. Dec 31, 2011

HARPER

County, Kansas

200' FSL-1980' FWL Section 12 Township 35S Range 8W P.M.

BOTTOM HOLE INFORMATION PROVIDED BY OPERATOR LISTED. NOT SURVEYED. CORNER COORDINATES ARE TAKEN FROM POINTS SURVEYED IN THE FIELD.



This location has been very carefully staked on the ground according to the best official survey records, maps, and photographs available to us, but its accuracy is not guaranteed. Review this plot and notify us immediately of any possible discrepancy.

Operator: SANDRIDGE ENERGY, INC.

Lease Name: BRAD

Topography & Vegetation Loc. fell in sloped cut field

Good Drill Site? Yes

Best Accessibility to Location From South off county road

Distance & Direction From Hwy Jct or Town From St. Hwy. 132 at Oklahoma-Kansas State Line North of Manchester, Ok., 90

4.5 miles West on State Line, then 0.6 mile North, then 1 mile West to the SW Cor. of Sec. 12-T35S-R8W

Well No.: 1-12H

ELEVATION:
1287 Gr. at Stake

(The following information was gathered using a GPS receiver Accuracy ±2-3 Meters.)

GPS
DATUM: NAD-27
LAT: 37°00'28.0"N
LONG: 98°08'21.2"W
LAT: 37.007789173
LONG: 98.139211265
STATE PLANE COORDINATES:
ZONE: KS SOUTH
X: 2105360
Y: 124414

Revision B

Date of Drawing: Jan. 24, 2012

Invoice # 174051

Date Staked: Oct. 8, 2011 LC

CERTIFICATE:

I, T. Wayne Fisch a Registered Land Surveyor and an authorized agent of Topographic Land Surveyors, do hereby certify that the above described well location was surveyed and staked on the ground as shown herein.

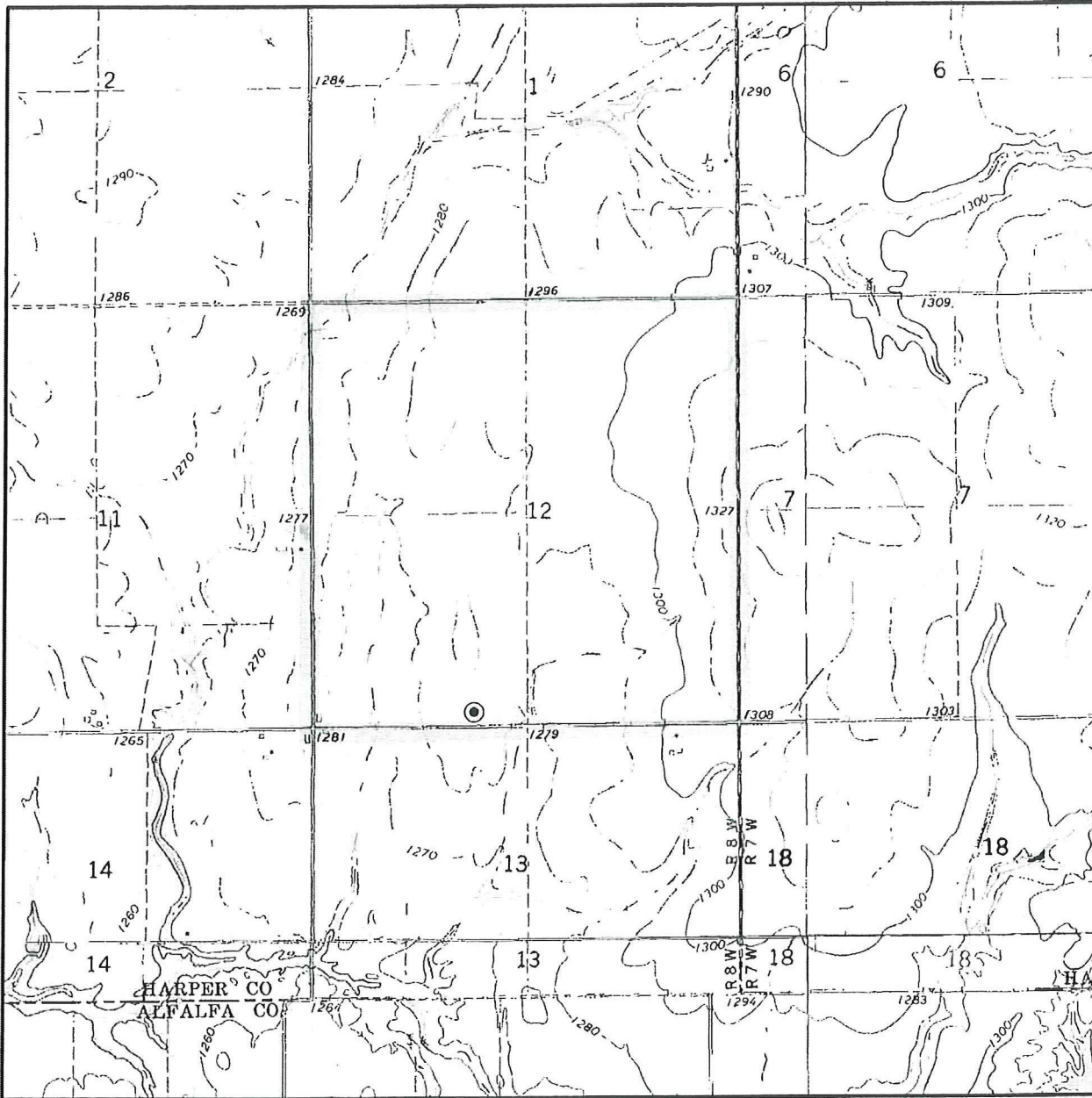
Kansas Reg. No. 1213



TOPOGRAPHIC LAND SURVEYORS

Surveying and Mapping for the Energy Industry
 6709 North Classen Blvd. Oklahoma City, OK 73116 www.topographic.com
 Telephone Numbers: Local (405) 843-4847 Toll Free (800) 654-3219

LOCATION & ELEVATION VERIFICATION MAP



Sec. 12 Twp. 35S Rng. 8W

County HARPER State KS

Operator SANDRIDGE ENERGY, INC.

Description 200'FSL-1980'FWL

Lease BRAD 1-12H

Elevation 1287' Gr. at Stake

U.S.G.S. Topographic
 Quadrangle Map WALDRON, KS

Above Background Data from
 U.S.G.S. Topographic Map

Scale: 1"=2000'

Contour Interval 10'

This location has been very carefully staked on the ground according to the best official survey records, maps and photographs available to us, but its accuracy is not guaranteed. When elevation is shown hereon it is the ground elevation of the location stake.
 Review this plat and inform us immediately of any possible discrepancy.

TOPOGRAPHIC

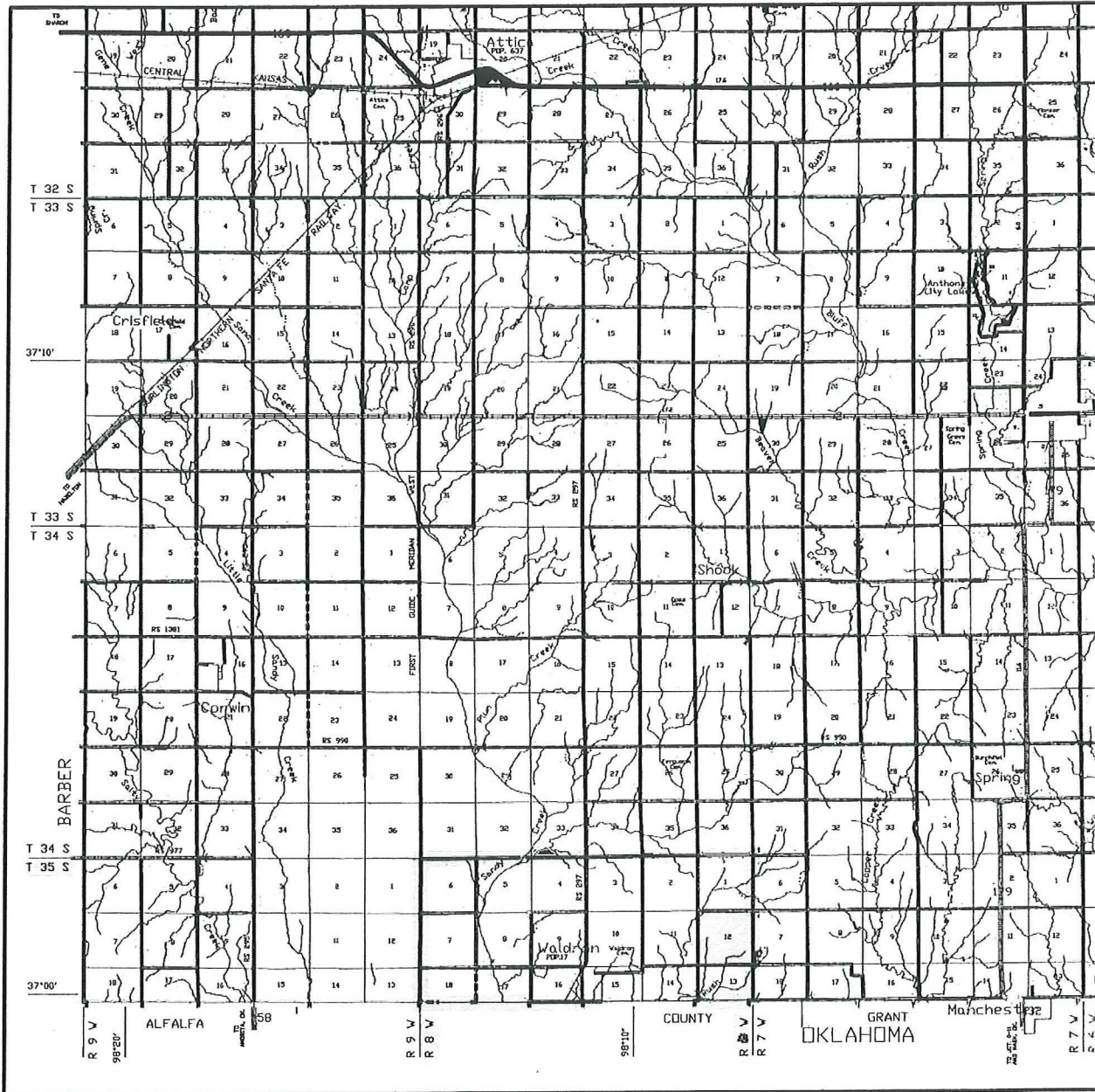
SURVEYING • MAPPING • GIS • GPS

Oct. 8, 2011

TOPOGRAPHIC LAND SURVEYORS

Surveying and Mapping for the Energy Industry
 6709 North Classen Blvd. Oklahoma City, OK 73116 www.topographic.com
 Telephone Numbers: Local (405) 843-4847 Toll Free (800) 654-3219

VICINITY MAP



Scale: 1" = 3 Miles

Sec. 12 Twp. 35S Rng. 8W

County HARPER State KS

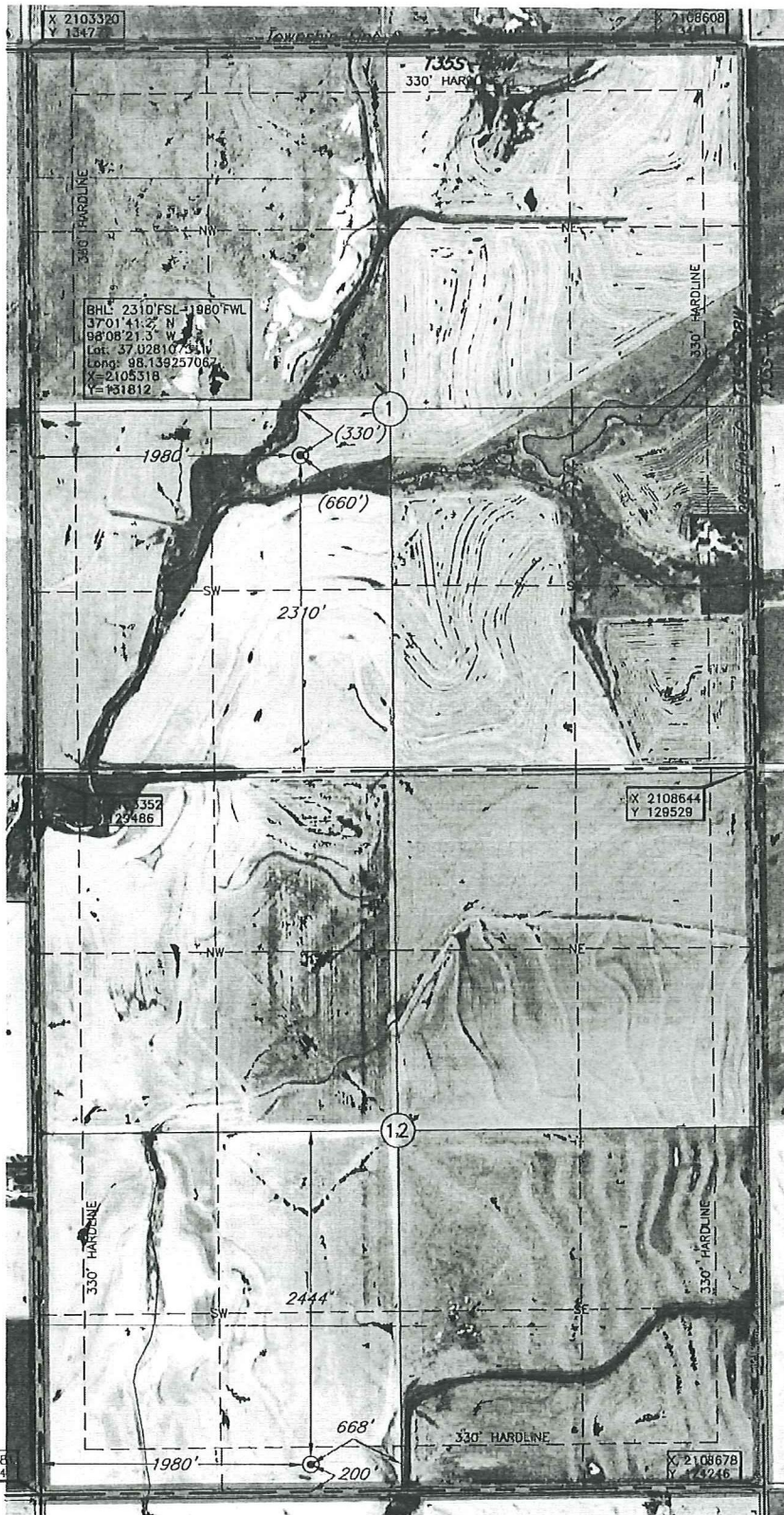
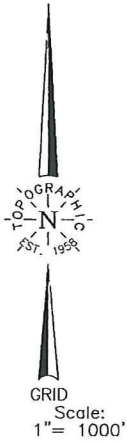
Operator SANDRIDGE ENERGY, INC.

TOPOGRAPHIC
 SURVEYING • MAPPING • GIS • GPS

Revised BHL
 1/24/12

HARPER County, Kansas
 200' FSL-1980' FWL Section 12 Township 35S Range 8W P.M.

BOTTOM HOLE INFORMATION PROVIDED
 BY OPERATOR LISTED. NOT SURVEYED.
 CORNER COORDINATES ARE TAKEN
 FROM POINTS SURVEYED IN THE FIELD.



This location has been very carefully staked on the ground according to the best official survey records, maps, and photographs available to us, but its accuracy is not guaranteed.
 Review this plot and notify us immediately of any possible discrepancy.

Operator: SANDRIDGE ENERGY, INC.

Lease Name: BRAD
 Well No.: 1-12H
 ELEVATION: 1287' Gr. at Stake

Topography & Vegetation Loc. fell in sloped cut field
 Good Drill Site? Yes Reference Stakes or Alternate Location Stakes Set None
 Best Accessibility to Location From South off county road
 Distance & Direction From St. Hwy. 132 at Oklahoma-Kansas State Line North of Manchester, Ok. 90
 4.5 miles West on State Line, then 0.6 mile North, then 1 mile West to the SW Cor. of Sec. 12-135S-8W

(The following information was gathered using a GPS receiver Accuracy ±2-3 Meters.)

GPS
 DATUM: NAD-27
 LAT: 37°00'28.0"N
 LONG: 98°08'21.2"W
 LAT: 37.007789173
 LONG: 98.139211265
 STATE PLANE COORDINATES:
 ZONE: KS SOUTH
 X: 2105360
 Y: 124414

Revision B Date of Drawing: Jan. 24, 2012
 Invoice # 174051 Date Staked: Oct. 8, 2011 LC

CERTIFICATE:

I, T. Wayne Fisch a Registered Land Surveyor and an authorized agent of Topographic Land Surveyors, do hereby certify that the above described well location was surveyed and staked on the ground as shown herein.

Kansas Reg. No. 1213

