

Well Name: Edmonston 1-28H

Contractor/Rig: Patterson-UTI 421

State: KS

County: Comanche

Proposed

SHL: 200' FSL & 660' FEL

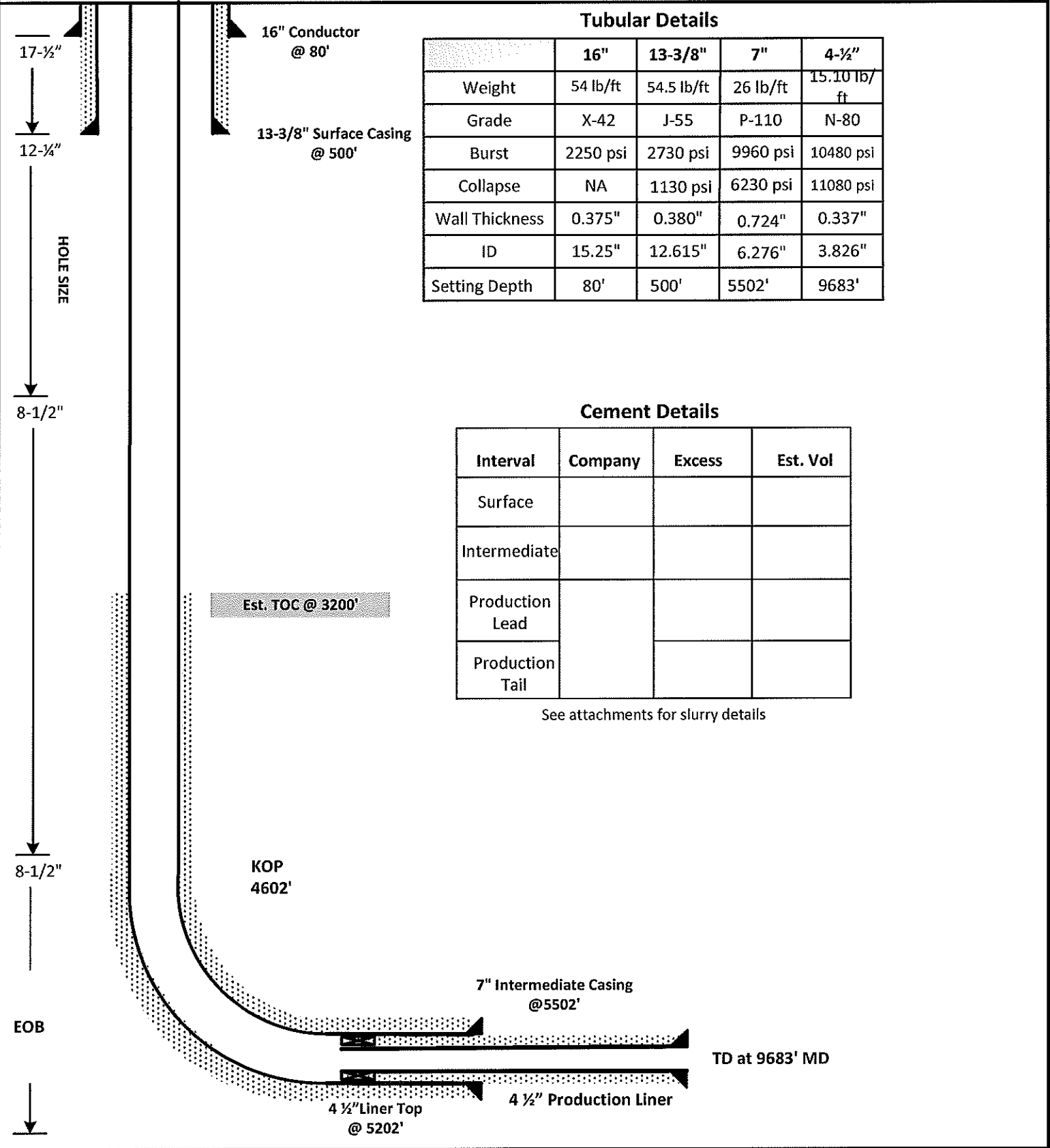
Township:

GL Elev: 1966' KB: KB Elev:

BHL: 330' FNL & 660' FEL

AFE: 12-0100

Permit Number: 1072003



Tubular Details

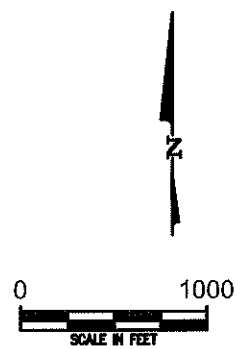
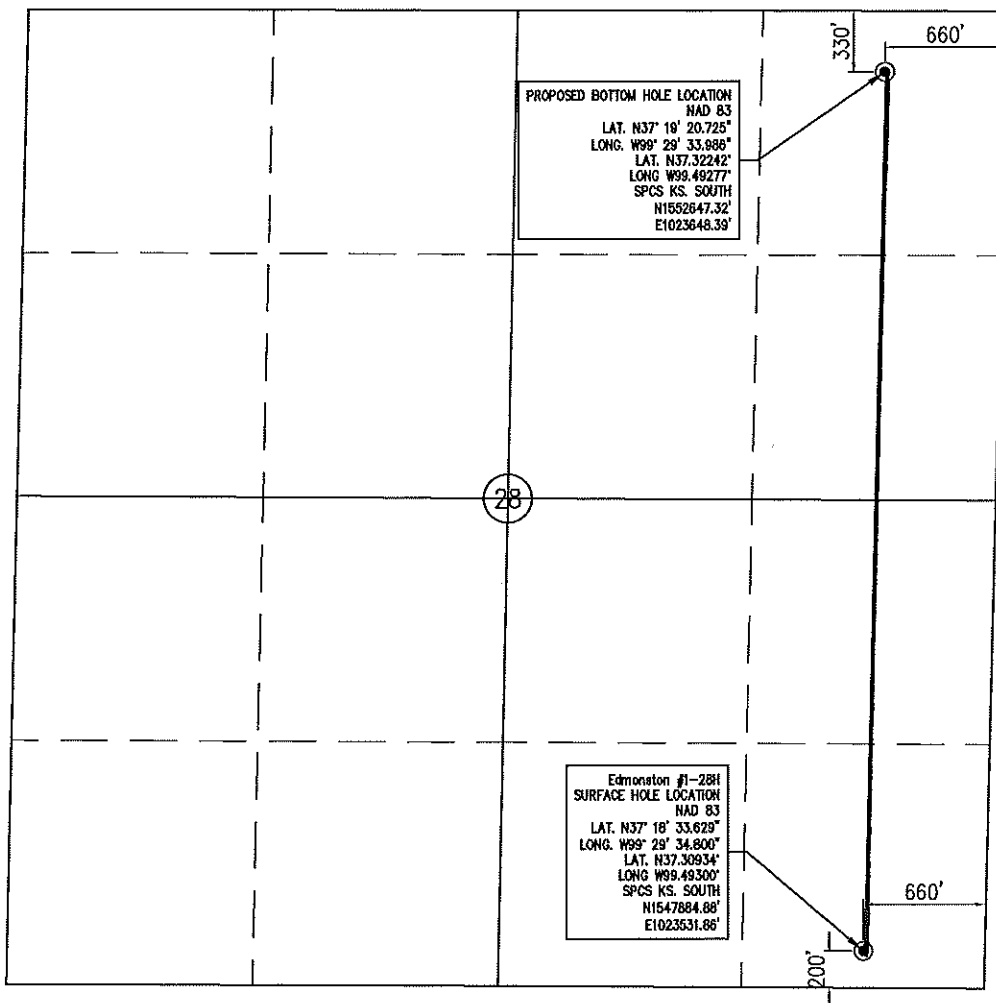
	16"	13-3/8"	7"	4-1/2"
Weight	54 lb/ft	54.5 lb/ft	26 lb/ft	15.10 lb/ft
Grade	X-42	J-55	P-110	N-80
Burst	2250 psi	2730 psi	9960 psi	10480 psi
Collapse	NA	1130 psi	6230 psi	11080 psi
Wall Thickness	0.375"	0.380"	0.724"	0.337"
ID	15.25"	12.615"	6.276"	3.826"
Setting Depth	80'	500'	5502'	9683'

Cement Details

Interval	Company	Excess	Est. Vol
Surface			
Intermediate			
Production Lead			
Production Tail			

See attachments for slurry details

WELL STAKE-OUT SURVEY



Lease Name: Edmonston
 Well No. 1-28H
 Surface El. at stake: 1967' NAVD88
 Well location Co./State: Comanche Co. Kansas
 Well location Section: 28-T31S-R20W

Alternate Datums

Horz. Datum NAD27

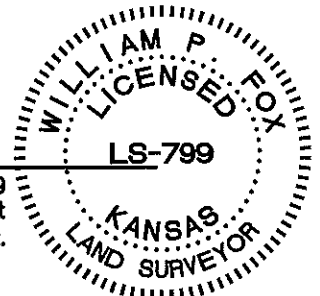
Edmonston #1-28H Lat. N37.3093178° Long. W99.4926025°

SURVEY DATUMS (shown on drawing)
 Horz. Datum NAD83(CORS96)
 Vert. Datum NAVD88(GEOD09)
 Ks. SPCS South Zone (US Feet)

State of Kansas)
)SS
 Sedgwick County)

This is to certify that this map or plat and the survey on which it is based was made by me or under my direct supervision and that to the best of knowledge and belief, this is a true and correct exhibit of said Survey. The wells shown hereon were staked January 18, 2011 at the coordinate location noted.

William P. Fox LS 799
 This survey is valid only if print
 bears Surveyor's seal signed in blue ink.




POE & ASSOCIATES, INC.
 CONSULTING ENGINEERS
 5910 E. Central, Suite 200 ■ Wichita, KS 67208-4242
 Phone 316.685-4114 ■ FAX 316.685-4444



QUINTANA PET CORP
VERNON
1

CHARTER PROD CO
HUCK
1-17

17

16

15

31S 20W

20

21

22

QUINTANA PET CORP
MCLAUGHLIN
1-22

REEDER OPERATING LLC
Richard W. Ward
1-20H

American Warrior, Inc.
RANDALL
1-27

American Warrior, Inc.
RANDALL
2

KAREN
1

27

29

28

Tug Hill Operating LLC
Edmonston
1-28H

32

33

34

J-F OIL CO LLC
1-34

HAR KEN OIL CO
TOBIAS
1



Comanche County

Location Map

Tug Hill Operating LLC
Edmonston #1-28H

By: BP

MAP PROJECTION

Datum: North American Datum 1927 (NAD27)



January 23, 2012