



**Woolsey Operating Company, LLC**

Scale 1:240 (5"=100') Imperial

Measured Depth Log

Well Name: Forester D-3  
Location: N2 SW SW SW  
License Number: API: 15-007-23771-00-00  
Spud Date: September 26, 2011  
Surface Coordinates: 330' FSL, 330' FWL Section 1-Twp 34 South - Rge 11 West  
Roundup South Pool  
Bottom Hole: Vertical Hole  
Coordinates:  
Ground Elevation (ft): 1408  
Logged Interval (ft): 4000 To: 5120  
Formation: McLish Shale  
Type of Drilling Fluid: Chemical Mud, Displace at 3395'

Region: Barber County, Kansas

Drilling Completed: October 4, 2011

K.B. Elevation (ft): 1417

Total Depth (ft): 5120

Printed by WellSight Log Viewer from WellSight Systems 1-800-447-1534 [www.WellSight.com](http://www.WellSight.com)

**OPERATOR**

Company: Woolsey Operating Company, LLC  
Address: 125 N. Market, Suite 1000  
Wichita, KS 67202

**GEOLOGIST**

Name: W. Scott Alberg  
Company: Alberg Petroleum, LLC  
Address: 609 Meadowlark Lane  
Pratt, Kansas 67124

## FORMATION TOPS

	SAMPLE TOPS	LOG TOPS
STARK SHALE	4330(-2916)	4326(-2912)
HUSHPUCKNEY SHALE	4362(-2945)	4358(-2941)
B/KC	4411(-2994)	4410(-2993)
PAWNEE	4507(-3090)	4506(-3089)
MISSISSIPPIAN	4586(-3164)	4580(-3158)
KINDERHOOK SHALE	4770(-3353)	4776(-3359)
WOODFORD SHALE	4858(-3441)	4859(-3442)
VIOLA	4895(-3478)	4903(-3486)
SIMPSON GROUP	4993(-3576)	4996(-3579)
SIMPSON WILCOX	5008(-3591)	5016(-3600)
MCLISH SHALE	5080(-3663)	5078(-3661)
RTD	5120(-3703)	
LTD		5119(-3702)

## COMMENTS

Surface Casing: Set 5 joints 10 3/4" at 213' with 240 sxs Class A, 2% gel, 3% cc, plug down at 11:15 am on September 26, 2011. Cement did Circulate.

Production Casing: .

Deviation Surveys: 220' 1 1/4, 1229' 1/2, 1728' 1/4, 2232' 1, 2703' 3/4, 3206' 1, 3710' 1/2, 3897' 1 1/4, 4019' 3/4 degree, 4207' 3/4, 4615' 1/4, 5120' 3/4.

Contractor Bit Record: 1- 14 3/4" out at 220'.

2- 7 7/8" out at 4615'.

3 -7 7/8" out at 5120'.

Gas Detector: Woolsey Operating Company, Trailer #1

Mud System: Mud Co, Brad Bortz, Engineer

DSTs: Two DST's by Superior Testers Enterprises, LLC

Logged by Superior Well Services

LTD 5119'.

## DSTs

**DST #1 4524 to 4616**

**Times 30-60-60-120**

**1st Opening, strong blow, BOB 11 minutes.**

**2nd Opening, strong blow, BOB 30 seconds, No GTS.**

**Recovery: 310' GIP, 62' Drilling Mud**

**IHP 2271# FHP 2245#**

**IFP 77-80# FFP 66-84#**

**ISIP 297# FSIP 471#**

**DST #2 4979 to 5011, Times 30-60-30-60**

**1st Opening weak blow throughout**

**2nd Opening no blow, flushed tool, no help**

**Recovery: 30' Drilling Mud**

**IHP 2552# FHP 2425#**

**IFP 44-50# FFP 51-71#**

**ISIP 80# FSIP 167#**

## CREWS

**H2 Drilling Rig #3**


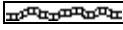
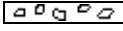

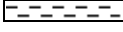

**Tool Pusher - Randy Smith**







**Drillers - Gary Axtell**


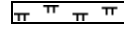

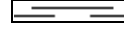

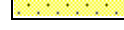
**Luis Marquez**






**Cornelio Avalos**

## ROCK TYPES

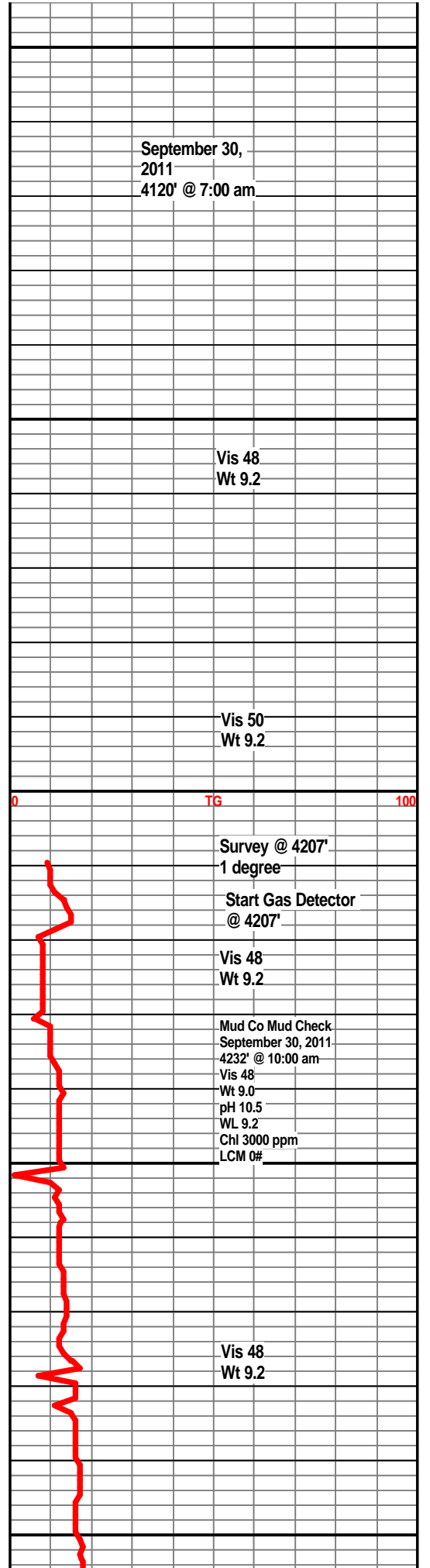
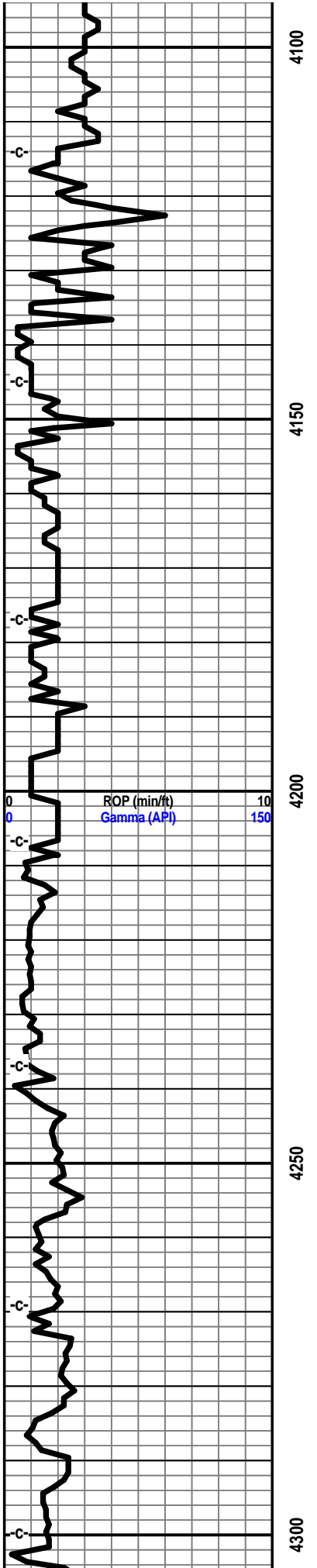
 **Anhy**  
 **Bent**  
 **Brec**  
 **Cht**  
 **Clyst**  
 **Coal**

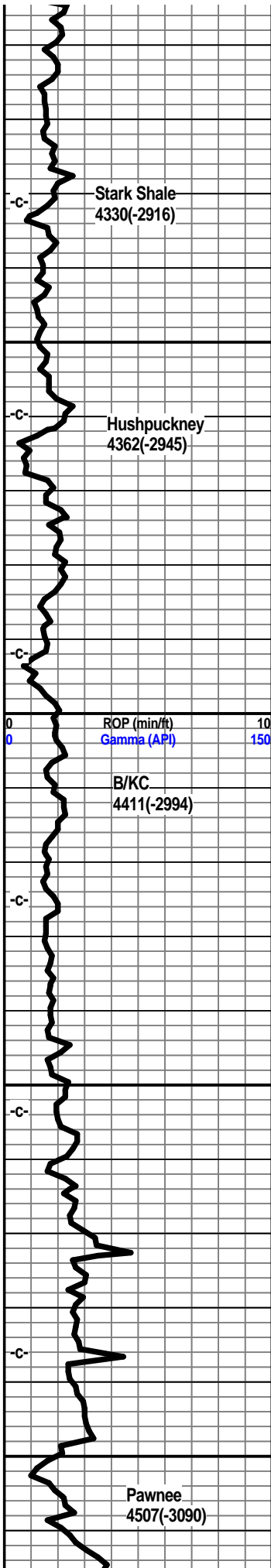
 **Congl**  
 **Sdy dolo**  
 **Shy dolo**  
 **Dol**  
 **Gyp**  
 **Sdy lmst**

 **Lmst**  
 **Mrlst**  
 **Salt**  
 **Shale**  
 **Sltst**  
 **Ss**

 **Black sh**  
 **Gry sh**  
 **Shale**  
 **Shyslts**  
 **Sltys**





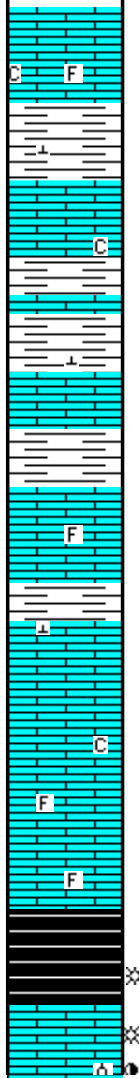


4350

4400

4450

4500



Limestone, buff-white, tan, fxln, dense, slightly foss., trace chalky.

Shale, grey-green, calcitic.

Limestone, grey-green, xln, slightly shaley.

Shale, light grey-green, calcitic.

Limestone, cream, grey-green, xln, dense, shaley.

Shale, light grey, green, calcitic.

Limestone, tan, cream, xln, dense, slightly foss, trace chalky.

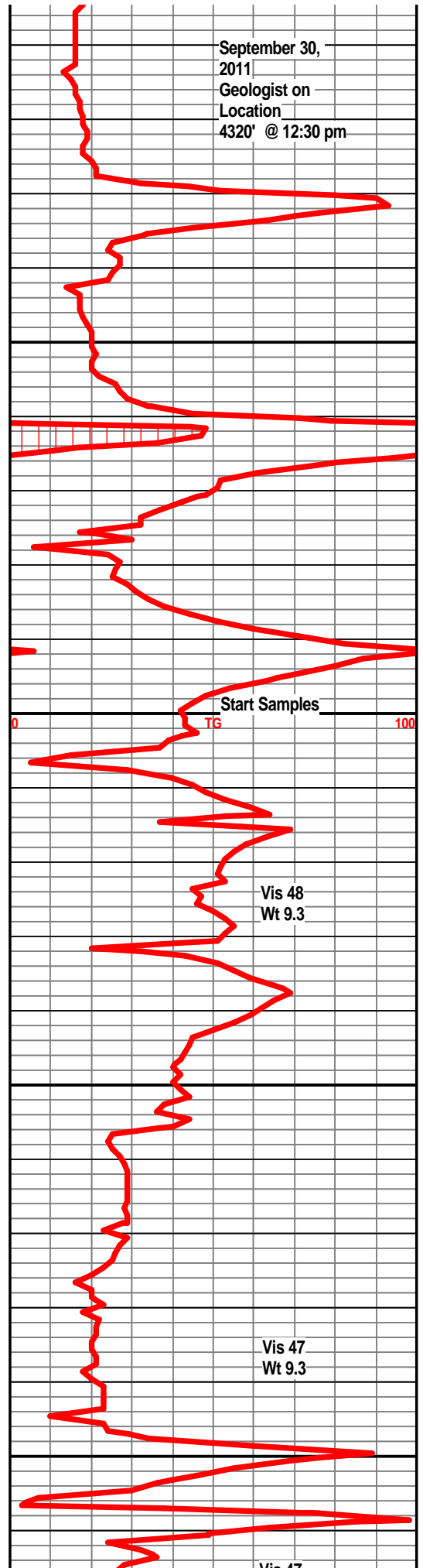
Shale, light grey.

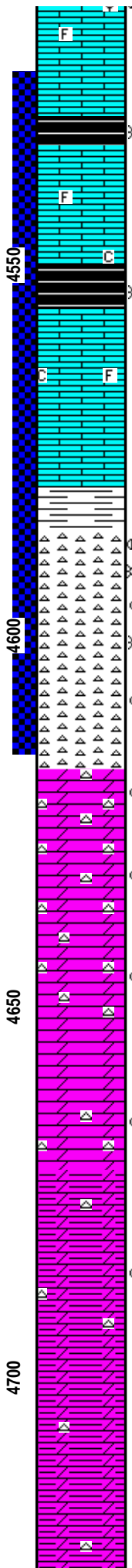
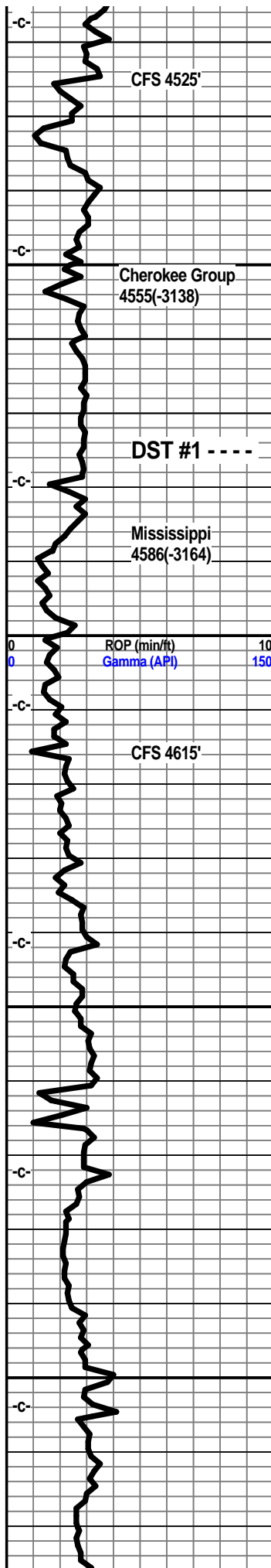
Limestone, cream, buff-white, xln, dense, trace foss, chalky in part.

Limestone, tan, buff-white, xln dense, slightly foss, chalky in part.

Shale, grey-black, carb.

Limestone, creamy-white, buff, xln, trace ppt





porosity, traces of oolites, poor porosity, faint odor, very slight show light oil, slight show of gas, dull scattered fluor.

Shale, grey-black, carb.

Limestone, cream, tan-white, xln, dense, slightly foss, trace chalky.

Shale, grey-black, slightly carb.

Limestone, tan, grey, fxln, slightly foss, subchalky in part.

Limestone, buff, tan, xln, dense, slightly foss, shaley towards base.

Shale, grey-green, traces of sand inclusions.

Chert, white, off-white, tan, translucent, sharp to weathered, scattered small vugs, scattered light brown staining, slight show light brown oil, traces of gas bubbles, poor to fair odor, scattered dull fluor.

Chert, white, off-white, translucent, pale green, sharp to weathered, some trip in part, scattered light brown staining, scattered small vugs, slight show light brown oil, slight gas show, poor to fair odor, scattered dull yellow fluor.

Dolo, tan, grey-white, xln, succ. texture, offwhite to tan weathered to sharp cherts, some light brown staining, slight odor, spotty shows of oil, dull fluor.

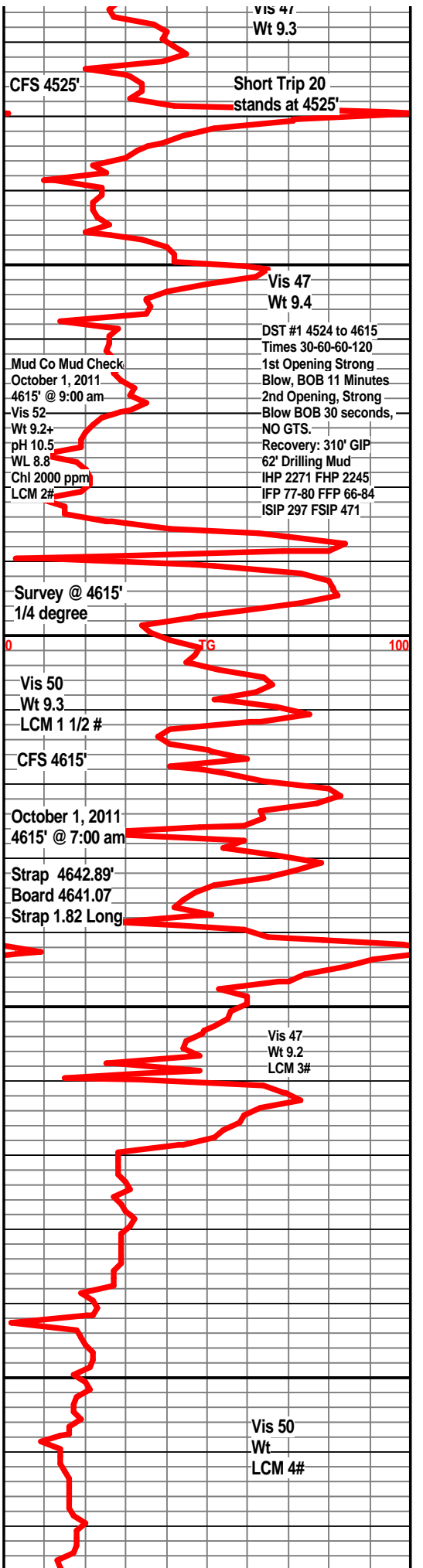
Dolo, grey-white, tan, xln, sharp to weathered cherts with scattered brown staining, slight show oil, slight odor, dull fluor.

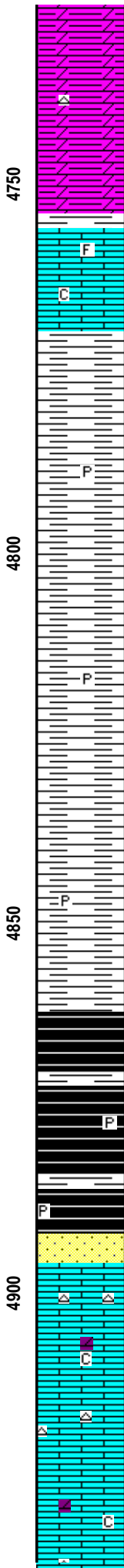
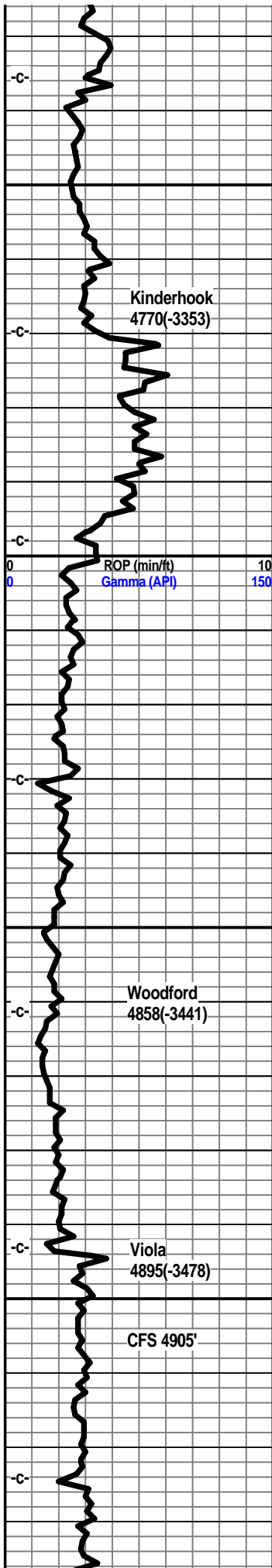
Dolo, grey-white, xln, weathered to sharp cherts, light brown scattered staining, slight odor, slight show oil and gas, dull scattered fluor.

Dolo, grey white, xln, grey-green shales, weathered cherts, slight staining, faint odor.

Dolo, grey, xln, light to dark grey shales, scattered weathered cherts with slight light staining.

Dolo, grey-white, xln, grey to dark grey shales, traces of pyrite, cherts.





Dolo, grey white, xln, grey shales.

Dolo, grey white, xln, grey-green shales.

Limestone, cream-white, buff, xln, dense, foss., subchalky in part.

Shale, light grey to grey, traces of pyrite.

Shale, light grey to grey, splintery, silty in part, traces of pyrite.

Shale, grey to dark grey, splintery, silty in part.

Shale, grey, silty, traces of pyrite.

Shale, dark grey, silty.

Shale, dark grey-black, slight show gas bubbles, traces of pyrite.

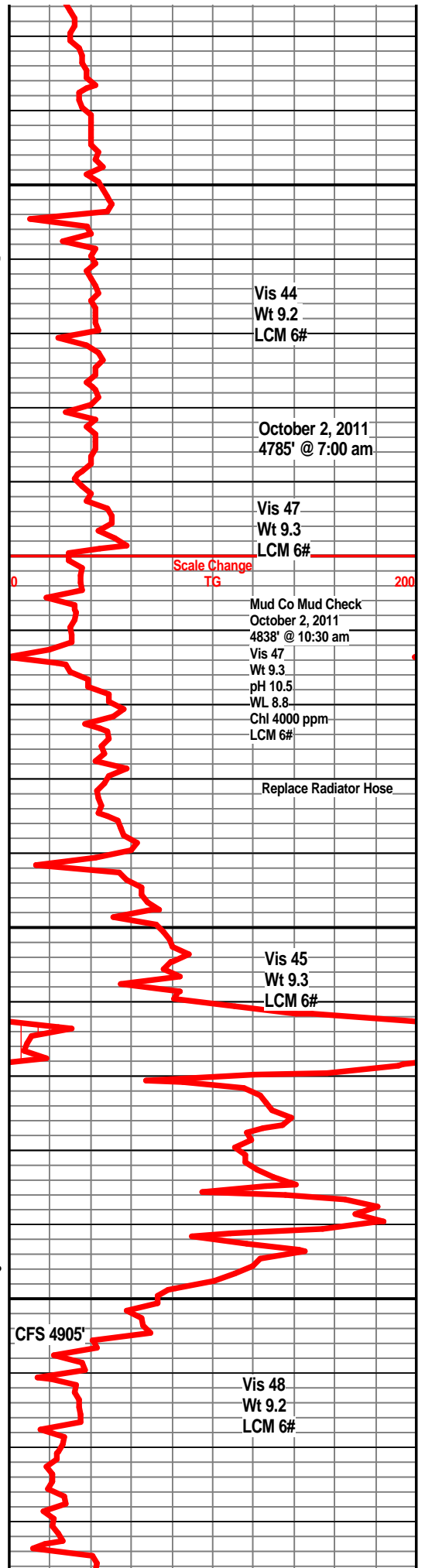
Shale, grey-black, some coffee brown, trace show gas bubble, carb.

Sandstone, clear to grey-white, sa, mostly well cemented, shale inclusions, scattered show of light oil under UV, ??? odor

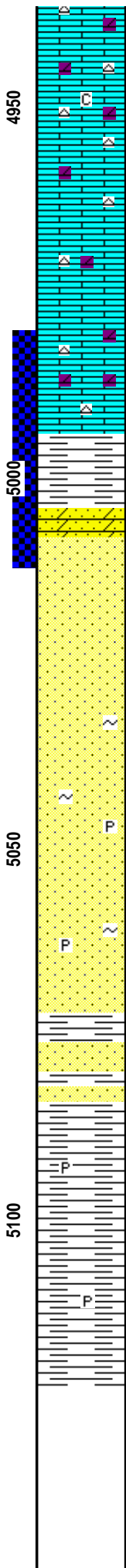
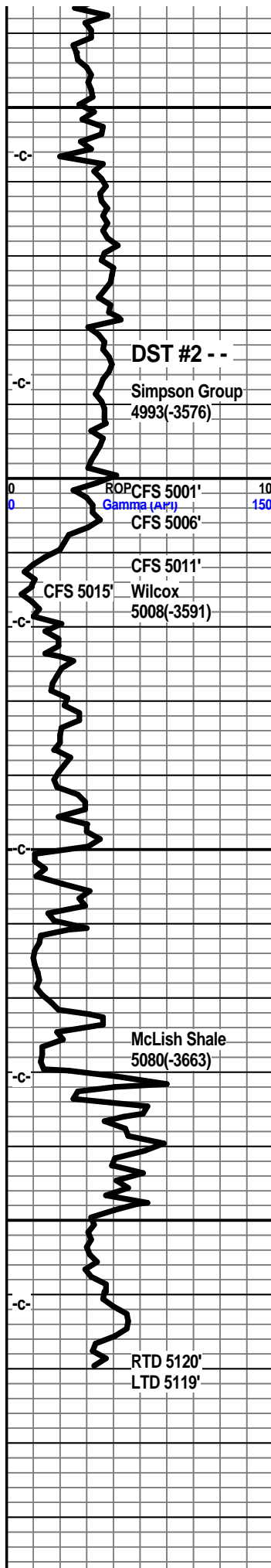
Limestone, cream-white, buff, xln, dense, dolo in part, translucent to off-white chert, subchalky in part, no visible shows.

Limestone, cream, buff-white, xln, some xln porosity, trace show light oil in few samples, no odor, no gas show, dull spotty fluor, some chalk, no odor.

Limestone, a/a, some tan dolo ls.







Limestone, tan, buff-white, fxln, dense, sl. dolo, traces of white chalky limestone, tan sharp cherts.

Limestone, tan, buff, xln, dense, tan cherts, dolo in part.

Limestone, tan, buff, fxln, dense, tan sharp cherts, slightly dolo in part.

Limestone, tan, buff, fxln, dense, specked, tan sharp cherts, slightly dolo.

Limestone, tan, buff, fxln, dense, sharp tan specked cherts, some granular ls., dolo in part.

Shale, green, dark green, firm, few sand grains embedded.

Dolo sand, tan, grey, well cemented, gluac, med grained, tite, no shows.

Sandstone, clear to white frosted qtz grains, sa to sr, friable, fair odor, fair show light oil, free oil in tray, some bleeding oil & gas. slight gas indication, good bright fluor. (5011 cfs)

Sandstone, clear to grey white, some tan sa to sr qtz grains, friable, very slight show oil, no odor, except when broken, shows decreasing from above, mostly clean clusters with no shows. Spotty fluor. (5015' cfs)

Sandstone, clear to grey, some tan, sa to sr, friable in part, some dolomitic, slight trace of oil, no odor, trace pyrite, gluac., some shale inclusions.

Sandstone, clear to grey, frosted, friable in part, some well cemented, dolomitic in part, trace gluac, ??? show oil, no odor.

Sandstone, clear to frosted white qtz grains, sa to sr, friable, gluac, no visible shows, no odor, traces of pyrite.

Shale, dark green, green, firm, blocky, traces of pyrite, some embedded sand grains.

Shale, green, light grey green, firm, waxey, blocky.

Shale, grey-green, firm, traces of pyrite.

