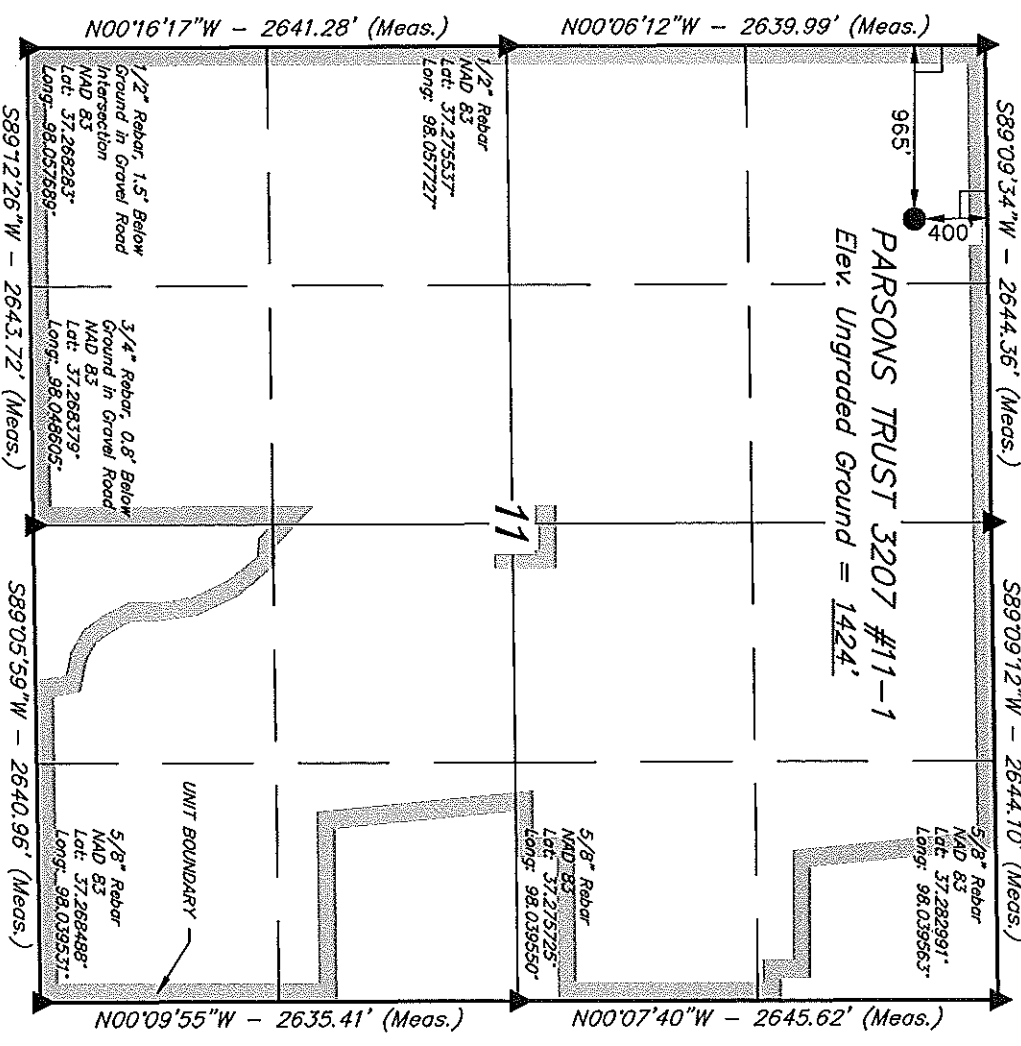


T32S, R7W, 6th P.M.

1/2" Rebar
MAD 83
Lat: 37.282737"
Long: 98.057738"
5/8" Rebar
MAD 83
Lat: 37.282999"
Long: 98.048550"
5/8" Rebar
MAD 83
Lat: 37.282991"
Long: 98.039563"
5/8" Rebar
MAD 83
Lat: 37.273725"
Long: 98.039550"
5/8" Rebar
MAD 83
Lat: 37.268488"
Long: 98.039537"
3/4" Rebar, 0.8' Below
Ground in Gravel Road
MAD 83
Lat: 37.268379"
Long: 98.048605"
1/2" Rebar, 1.5' Below
Ground in Gravel Road
Intersection
MAD 83
Lat: 37.268283"
Long: 98.057689"
5/8" Rebar
MAD 83
Lat: 37.275537"
Long: 98.057727"



LEGEND:
 L = 90° SYMBOL
 ● = PROPOSED WELL HEAD.
 ▲ = SECTION CORNERS LOCATED.

(NAD 83)
 LATITUDE = 37°16'54.21" (37.281726)
 LONGITUDE = 98°03'15.91" (98.054420)
 (NAD 27)
 LATITUDE = 37°16'54.14" (37.281706)
 LONGITUDE = 98°03'14.69" (98.054081)

SGOMI

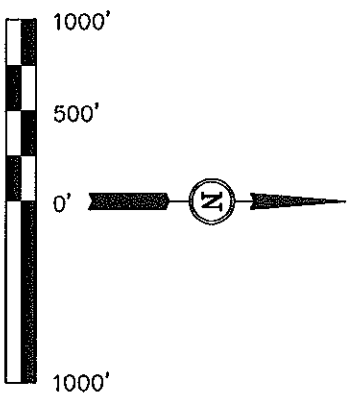
Well location, PARSONS TRUST 3207 #11-1, located as shown in the NW 1/4 NW 1/4 of Section 11, T32S, R7W, 6th P.M., Harper County, Kansas.

BASIS OF ELEVATION

SPOT ELEVATION LOCATED AT THE NORTHEAST CORNER OF SECTION 22, T33S, R7W, 6th P.M. TAKEN FROM THE ANTHONY, QUADRANGLE, KANSAS, HARPER COUNTY, 7.5 MINUTE QUAD (TOPOGRAPHIC MAP) PUBLISHED BY THE UNITED STATES DEPARTMENT OF THE INTERIOR, GEOLOGICAL SURVEY. SAID ELEVATION IS MARKED AS BEING 1348 FEET.

BASIS OF BEARINGS

BASIS OF BEARINGS IS A G.P.S. OBSERVATION.



CERTIFICATE

THIS IS TO CERTIFY THAT THE ABOVE PLAT IS A TRUE AND CORRECT COPY OF THE ORIGINAL FIELD NOTES OF ACTUAL SURVEY MADE BY ME AND CORRECTED TO THE BEST OF MY KNOWLEDGE AND BELIEF.



UTIAH ENGINEERING & LAND SURVEYING
 85 SOUTH 200 EAST - VERNAL, UTAH 84078
 (435) 789-1017

SCALE 1" = 1000'	DATE SURVEYED: 01-05-12	DATE DRAWN: 01-19-12
PARTY L.S. D.S. C.C.	REFERENCES G.L.O. PLAT	FILE SGOMI
WEATHER COLD		