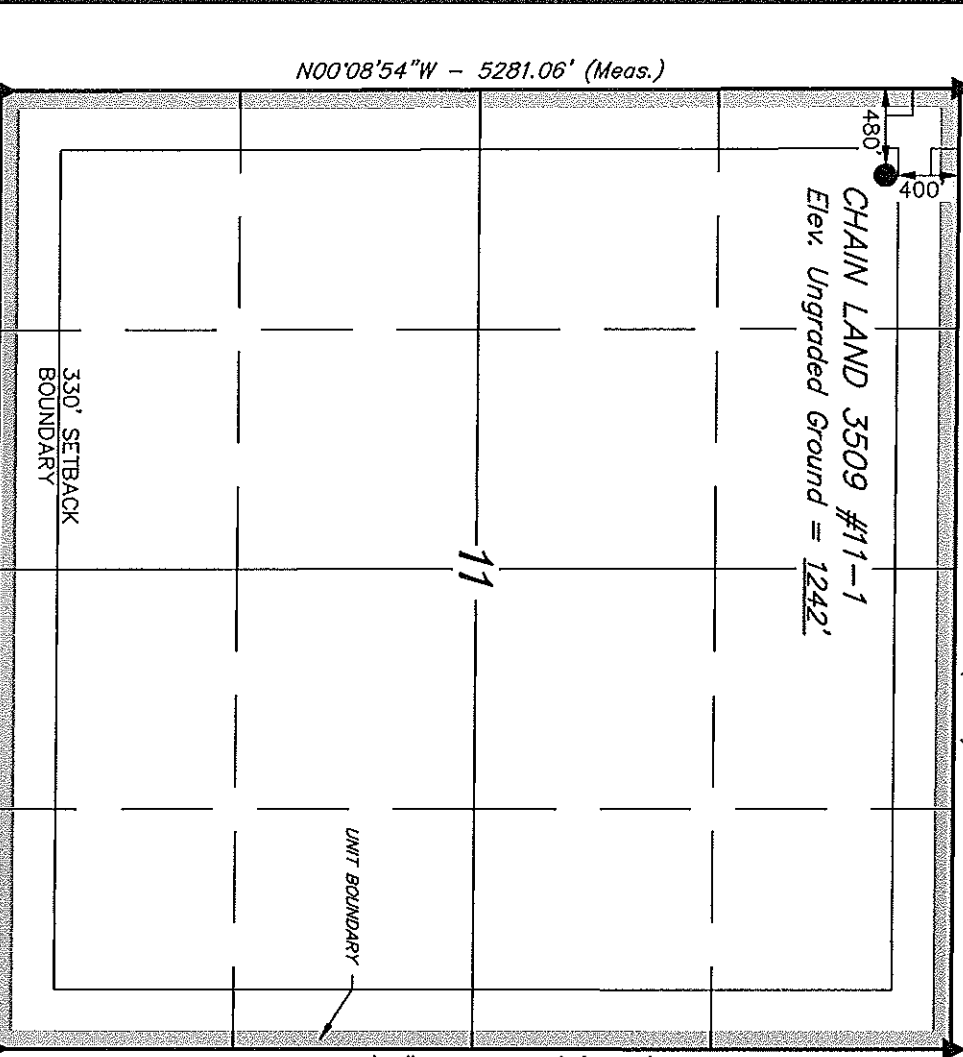


T35S, R9W, 6th P.M.

2" Alum. Cap
NAD 83
Lat: 37.021550°
Long: 98.273775°

N89°37'18"W - 5324.14' (Meas.)

2" Alum. Cap
NAD 83
Lat: 37.021475°
Long: 98.255539°



LEGEND:

- = 90° SYMBOL
- = PROPOSED WELL HEAD.
- ▲ = SECTION CORNERS LOCATED.

(NAD 83)
LATITUDE = 37°01'13.60" (37.020444)
LONGITUDE = 98°16'19.65" (98.272125)
(NAD 27)
LATITUDE = 37°01'13.50" (37.020417)
LONGITUDE = 98°16'18.40" (98.271778)

N89°38'28"W - 5304.66' (Meas.)

N00°03'46"E - 5279.11' (Meas.)

SGOMI

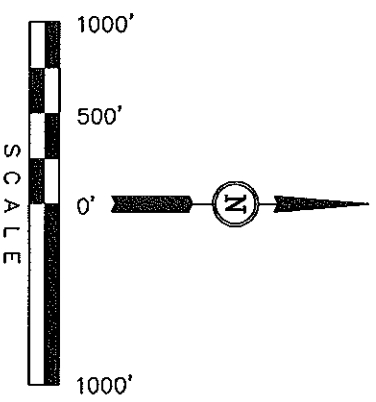
Well location, CHAIN LAND 3509 #11-1, located as shown in the NW 1/4 NW 1/4 of Section 11, T35S, R9W, 6th P.M., Harper County, Kansas.

BASIS OF ELEVATION

SPOT ELEVATION LOCATED AT THE NORTHEAST CORNER OF SECTION 22, T35S, R7W, 6th P.M. TAKEN FROM THE ANTHONY, QUADRANGLE, KANSAS, HARPER COUNTY, 7.5 MINUTE QUAD (TOPOGRAPHIC MAP) PUBLISHED BY THE UNITED STATES DEPARTMENT OF THE INTERIOR, GEOLOGICAL SURVEY. SAID ELEVATION IS MARKED AS BEING 1348 FEET.

BASIS OF BEARINGS

BASIS OF BEARINGS IS A G.P.S. OBSERVATION.



CERTIFICATE

THIS IS TO CERTIFY THAT THE ABOVE P...
FIELD NOTES OF ACTUAL SURVEYS MADE BY...
SUPERVISION AND THAT THE SAME ARE...
BEST OF MY KNOWLEDGE AND BELIEF.



UTAH ENGINEERING & LAND SURVEYING
85 SOUTH 200 EAST - VERNAL, UTAH 84078
(435) 789-1017

SCALE	1" = 1000'	DATE SURVEYED:	01-08-12	DATE DRAWN:	01-19-12
PARTY	L.S. D.S. C.C.	REFERENCES	G.L.O. PLAT		
WEATHER	COLD	FILE	SGOMI		