

T34S, R7W, 6th P.M.

SGOMI

1/2" Rebar, 1.2'  
Below Ground, In  
Gravel Road  
NAD 83  
Lat: 37.065375°  
Long: 98.110711°

R 8  
R 7  
W

589.23'5.3"W - 2646.80' (Meas.)

589.23'0.0"W - 2638.89' (Meas.)

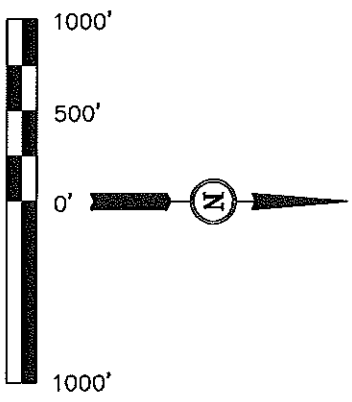
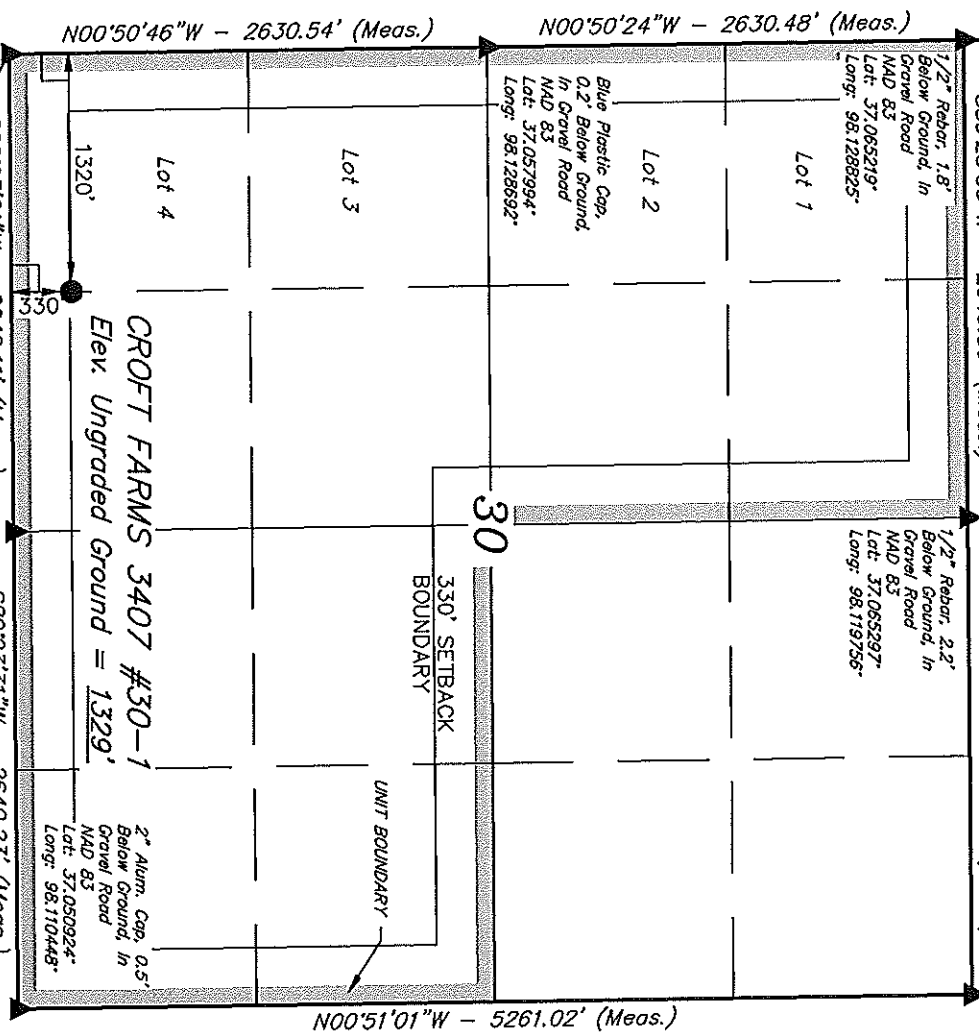
Well location, CROFT FARMS 3407 #30-1, located as shown in the SW 1/4 SW 1/4 of Section 30, T34S, R7W, 6th P.M., Harper County, Kansas.

**BASIS OF ELEVATION**

SPOT ELEVATION LOCATED AT THE NORTHEAST CORNER OF SECTION 22, T33S, R7W, 6th P.M. TAKEN FROM THE ANTHONY, QUADRANGLE, KANSAS, HARPER COUNTY, 7.5 MINUTE QUAD (TOPOGRAPHIC MAP) PUBLISHED BY THE UNITED STATES DEPARTMENT OF THE INTERIOR, GEOLOGICAL SURVEY. SAID ELEVATION IS MARKED AS BEING 1348 FEET.

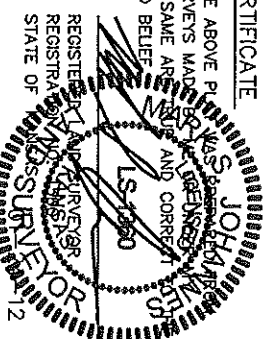
**BASIS OF BEARINGS**

BASIS OF BEARINGS IS A G.P.S. OBSERVATION.



**CERTIFICATE**

THIS IS TO CERTIFY THAT THE ABOVE PLAT WAS MADE FROM THE FIELD NOTES OF ACTUAL SURVEYS MADE BY ME AND CORRECT SUPERVISION AND THAT THE SAME ARE TRUE AND CORRECT TO THE BEST OF MY KNOWLEDGE AND BELIEF.



589.23'2.1"W - 2646.11' (Meas.)  
1/2" Rebar, 1.5'  
Below Ground, In  
Gravel Road  
NAD 83  
Lat: 37.050772°  
Long: 98.128558°

Spike, 0.3' Below  
Road  
Ground, In Gravel  
Road  
NAD 83  
Lat: 37.050850°  
Long: 98.119492°

589.23'3.1"W - 2640.23' (Meas.)  
2" Alum. Cap, 0.5'  
Below Ground, In  
Gravel Road  
NAD 83  
Lat: 37.050924°  
Long: 98.110448°

**LEGEND:**

- └─ = 90° SYMBOL
  - = PROPOSED WELL HEAD.
  - ▲ = SECTION CORNERS LOCATED.
- LATITUDE = 37°03'06.18" (37.051717)  
LONGITUDE = 98°07'26.59" (98.124053)
- LATITUDE = 37°03'06.09" (37.051692)  
LONGITUDE = 98°07'25.35" (98.123708)

<b>UNTAEH ENGINEERING &amp; LAND SURVEYING</b>			
85 SOUTH 200 EAST - VERNAL, UTAH 84078			
(435) 789-1017			
SCALE	1" = 1000'	DATE SURVEYED:	01-20-12
DATE DRAWN:	01-23-12	DATE SURVEYED:	01-20-12
PARTY	L.S. D.S. C.C.	REFERENCES	G.L.O. PLAT
WEATHER	COLD	FILE	SGOMI