



**TRILOBITE TESTING, INC.**

# DRILL STEM TEST REPORT

McCoy Petroleum Corporation

**25/12S/34W-Logan**

8080 E. Central, Ste. #300  
Wichita, KS 67206

**Craig "A" #1-25**

ATTN: Jerry Smith

Job Ticket: 46368

**DST#: 1**

Test Start: 2012.01.19 @ 23:21:30

## GENERAL INFORMATION:

Formation: **Pawnee-Cherokee**

Deviated: No Whipstock: ft (KB)

Time Tool Opened: 01:58:30

Time Test Ended: 08:24:00

Test Type: Conventional Bottom Hole (Initial)

Tester: Dustin Rash

Unit No: 38

**Interval: 4521.00 ft (KB) To 4654.00 ft (KB) (TVD)**

Reference Elevations: 3151.00 ft (KB)

Total Depth: 4654.00 ft (KB) (TVD)

3141.00 ft (CF)

Hole Diameter: 7.88 inches Hole Condition: Fair

KB to GR/CF: 10.00 ft

**Serial #: 8354**

**Inside**

Press @ Run Depth: 86.39 psig @ 4623.00 ft (KB)

Capacity: 8000.00 psig

Start Date: 2012.01.19 End Date: 2012.01.20

Last Calib.: 2012.01.20

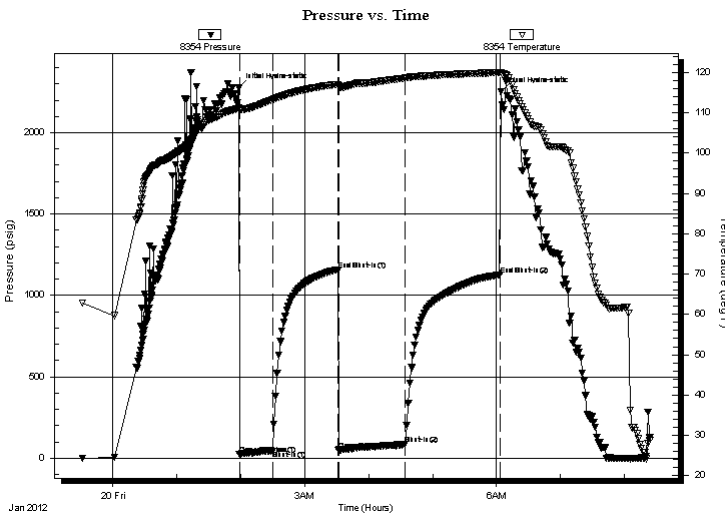
Start Time: 23:31:30 End Time: 08:24:00

Time On Btm: 2012.01.20 @ 01:58:00

Time Off Btm: 2012.01.20 @ 06:04:00

**TEST COMMENT:** IF-Weak surging blow . Built to 2&1/2 inches.  
ISI-No Return.  
FF-Weak surging blow . Built to 3/4 inch. Died @ 48 minutes.  
FSI-No Return.

## PRESSURE SUMMARY



Time (Min.)	Pressure (psig)	Temp (deg F)	Annotation
0	2274.14	111.15	Initial Hydro-static
1	24.28	110.63	Open To Flow (1)
32	45.56	113.25	Shut-In(1)
93	1154.08	117.03	End Shut-In(1)
94	47.89	116.61	Open To Flow (2)
156	86.39	118.65	Shut-In(2)
245	1127.40	119.99	End Shut-In(2)
246	2253.13	119.97	Final Hydro-static

## Recovery

Length (ft)	Description	Volume (bbl)
124.00	100%Mud	0.61

## Gas Rates

	Choke (inches)	Pressure (psig)	Gas Rate (Mcf/d)



**TRILOBITE  
TESTING, INC.**

# DRILL STEM TEST REPORT

**FLUID SUMMARY**

McCoy Petroleum Corporation

**25/12S/34W-Logan**

8080 E. Central, Ste. #300  
Wichita, KS 67206

**Craig "A" #1-25**

Job Ticket: 46368

**DST#: 1**

ATTN: Jerry Smith

Test Start: 2012.01.19 @ 23:21:30

## Mud and Cushion Information

Mud Type: Gel Chem

Cushion Type:

Oil API:

deg API

Mud Weight: 9.00 lb/gal

Cushion Length:

ft

Water Salinity:

ppm

Viscosity: 56.00 sec/qt

Cushion Volume:

bbbl

Water Loss: 7.98 in<sup>3</sup>

Gas Cushion Type:

Resistivity: ohm.m

Gas Cushion Pressure:

psig

Salinity: 3600.00 ppm

Filter Cake: inches

## Recovery Information

Recovery Table

Length ft	Description	Volume bbl
124.00	100%Mud	0.610

Total Length: 124.00 ft      Total Volume: 0.610 bbl

Num Fluid Samples: 0

Num Gas Bombs: 0

Serial #:

Laboratory Name:

Laboratory Location:

Recovery Comments:

Serial #: 8354

Inside

McCoy Petroleum Corporation

Craig "A" #1-25

DST Test Number: 1

