

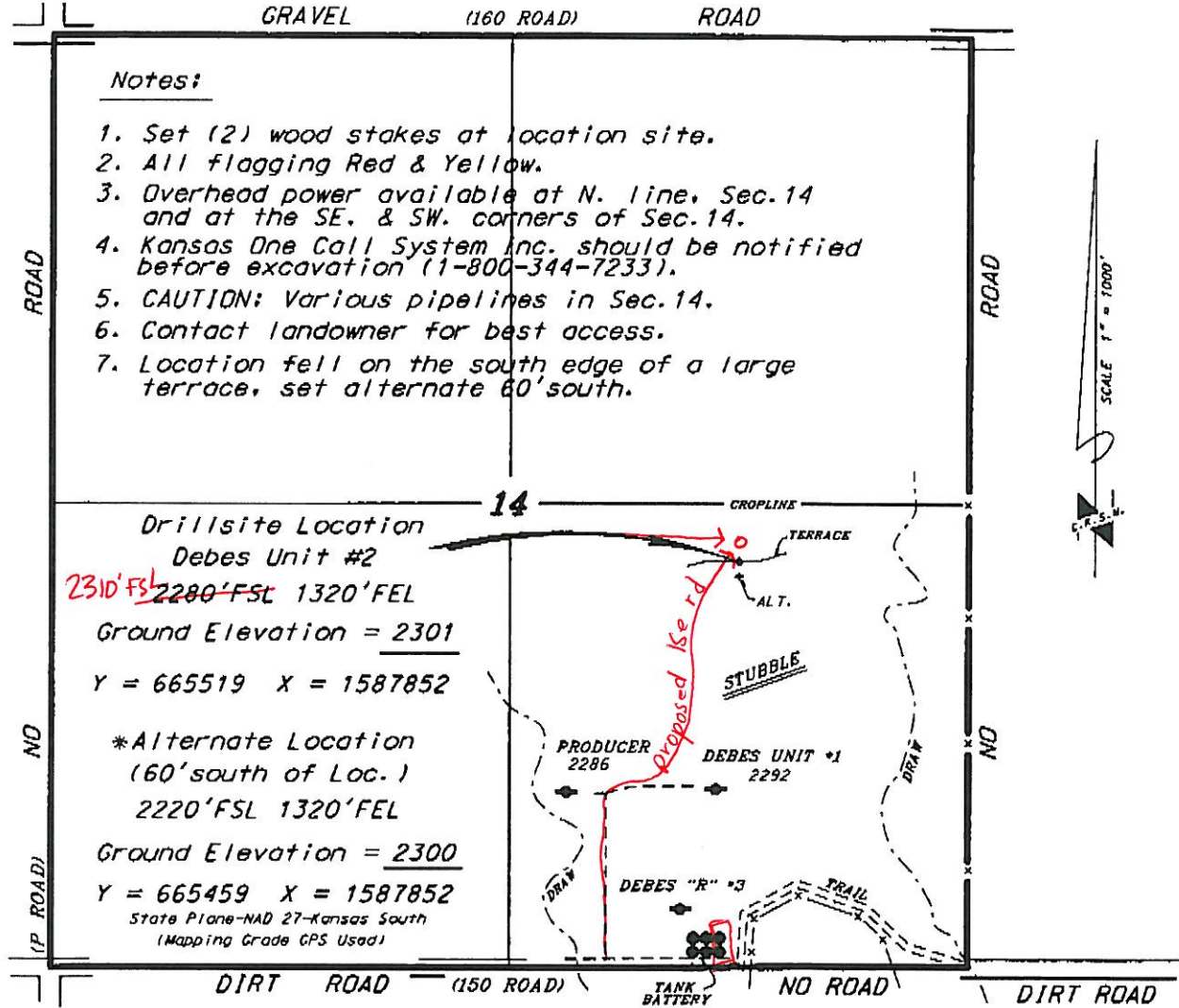
TRANS PACIFIC OIL CORPORATION
DEBES LEASE
SE. 1/4, SECTION 14, T18S, R24W
NESS COUNTY, KANSAS

GRAVEL (160 ROAD) ROAD

Notes:

1. Set (2) wood stakes at location site.
2. All flagging Red & Yellow.
3. Overhead power available at N. line, Sec. 14 and at the SE. & SW. corners of Sec. 14.
4. Kansas One Call System Inc. should be notified before excavation (1-800-344-7233).
5. CAUTION: Various pipelines in Sec. 14.
6. Contact landowner for best access.
7. Location fell on the south edge of a large terrace, set alternate 60' south.

*Ingress and egress to location as shown on this plat is for usage only and may not be legally opened for public use. Contact landowner, tenant and county road department for access.



Drillsite Location
Debes Unit #2

2310' FSL 2280' FSL 1320' FEL

Ground Elevation = 2301

Y = 665519 X = 1587852

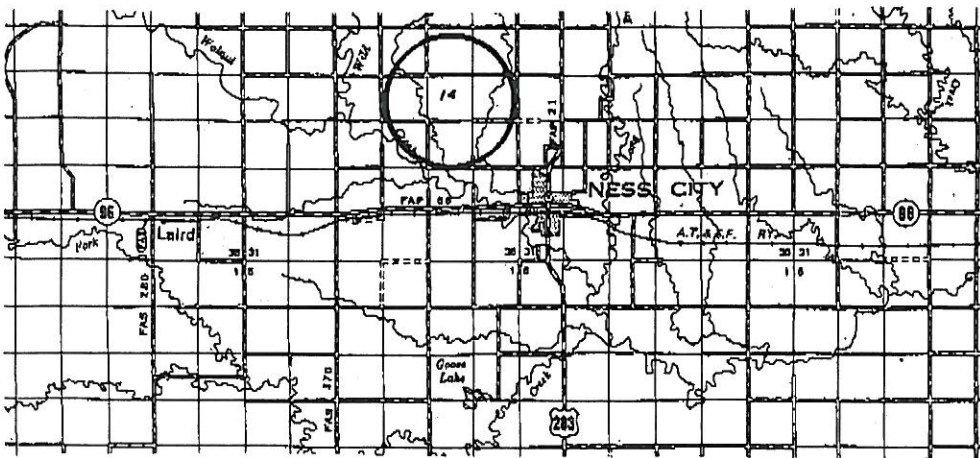
*Alternate Location
(60' south of Loc.)

2220' FSL 1320' FEL

Ground Elevation = 2300

Y = 665459 X = 1587852

State Plane-NAD 27-Kansas South
(Mapping Grade GPS Used)



* Controlling data is based upon the best maps and photographs available to us and upon a regular section of land containing 640 acres.
 * Approximate section lines were determined using the normal standard of care of oilfield surveyors practicing in the state of Kansas. The section corners, which establish the precise section lines, were not necessarily located, and the exact location of the definite location in the section is not guaranteed. Therefore, the operator, securing this service and accepting this plat and all other parties relying thereon agree to hold Central Kansas Oilfield Services, Inc., its officers and employees harmless from all losses, costs and expenses and hold harmless released from any liability from incidental or consequential damages.
 * Elevations derived from National Geodetic Vertical Datum.

Date January 25, 2012