

Schlumberger

LOG REDUCTION OF  
WITH LINEAR CORRELATION LOG

COMPANY CITIZENS SERVICE COMPANY

WELL FINNEY (1) NO. 76

FIELD ELDORADO

COUNTY BUTLER STATE KANSAS

LOCATION 2310 FSI, 2310 FWL  
394' - FINNEY (1) NO. 76  
API SERIAL NO. 29 SEC. 25S TWP 5E RANGE

Other Services:  
FDC-CNL-GR  
CYBERLOOK

Permanent Datum: GROUND LEVEL; Elev.: 1397  
Log Measured From KB 5 Ft. Above Perm. Datum  
Drilling Measured From KB

Elev.: K.B. 1402  
D.F. -----  
G.L. 1397

Date	3-27-83				
Run No.	ONE				
Depth-Driller	2570				
Depth-Logger	2571				
Btm. Log Interval	2565				
Top Log Interval	258				
Casing-Driller	8 5/8 @ 253	@	@	@	@
Casing-Logger	258				
Bit Size	7 7/8				
Type Fluid in Hole	CHEMICAL				
Dens.	9.5	40			
Visc.					
pH	10.5	11.2ml	ml	ml	ml
Fluid Loss					
Source of Sample	FLOWLINE				
Rm @ Meas. Temp.	2.61 @ 62 °F	@	°F	@	°F
Rmf @ Meas. Temp.	1.72 @ 65 °F	@	°F	@	°F
Rmc @ Meas. Temp.	3.92 @ 62 °F	@	°F	@	°F
Source: Rmf   Rmc	MEAS   CALC.				
Rm @ BHT	1.80 @ 90 °F	@	°F	@	°F
Circulation Stopped	00:30				
Logger on Bottom	3:00				
Max. Rec. Temp.	90 °F	°F	°F	°F	°F
Equip.	8351	WICH			
Location					
Recorded By	BAUER				
Witnessed By	HOWELL				

The well name, location and borehole reference data were furnished by the customer.

SCALE CHANGES		Type Log	Depth	Scale Up Hole	Scale
Run No.	ONE				
Service Order No.	380301				
Fluid Level	SURFACE				
Salinity ppm. cl	1100				
Speed F.P.M.	100				
EQUIPMENT DATA					
MODULE	1203				
Cart No.	1176				
Sonde No.	1214				
G.R. MODULE	1175				
G.R. Cart No.	1056				
Tape Recorder - (TR)	----				
Depth Encoder - (DRE)	----				
Pressure Wheel - (CPW)	----				
Type Centralizers	4 FIN				
Stand Off - Inches	1.5"				

CALIBRATION DATA		REMARKS	
SBR	SEE		
Sonde Error - ILM	CSU		
Sonde Error - ILD	CALIBRATION		
G.R. BKG. - CPS.	TAIL.		
G.R. Source - CPS.			
S.E. Set In Hole - Depth			
S.E. Corr. - Hole Size			
LOGGING DATA			
SBR			
S.E. Log - ILM			
S.E. Log - ILD			
G.R. Scale per 100 Div.			
G.R. - T.C.			
G.R. Sens.			

All interpretations are opinions based on inferences from electrical or other measurements and we cannot, and do not guarantee the accuracy or correctness of any pretensions, and we shall not be liable for any loss, costs, damages or expenses incurred by anyone resulting from any interpretation made by any of our officers, agents or employees. These interpretations are also subject to our General Terms and Conditions as set out in our current Price Schedule.

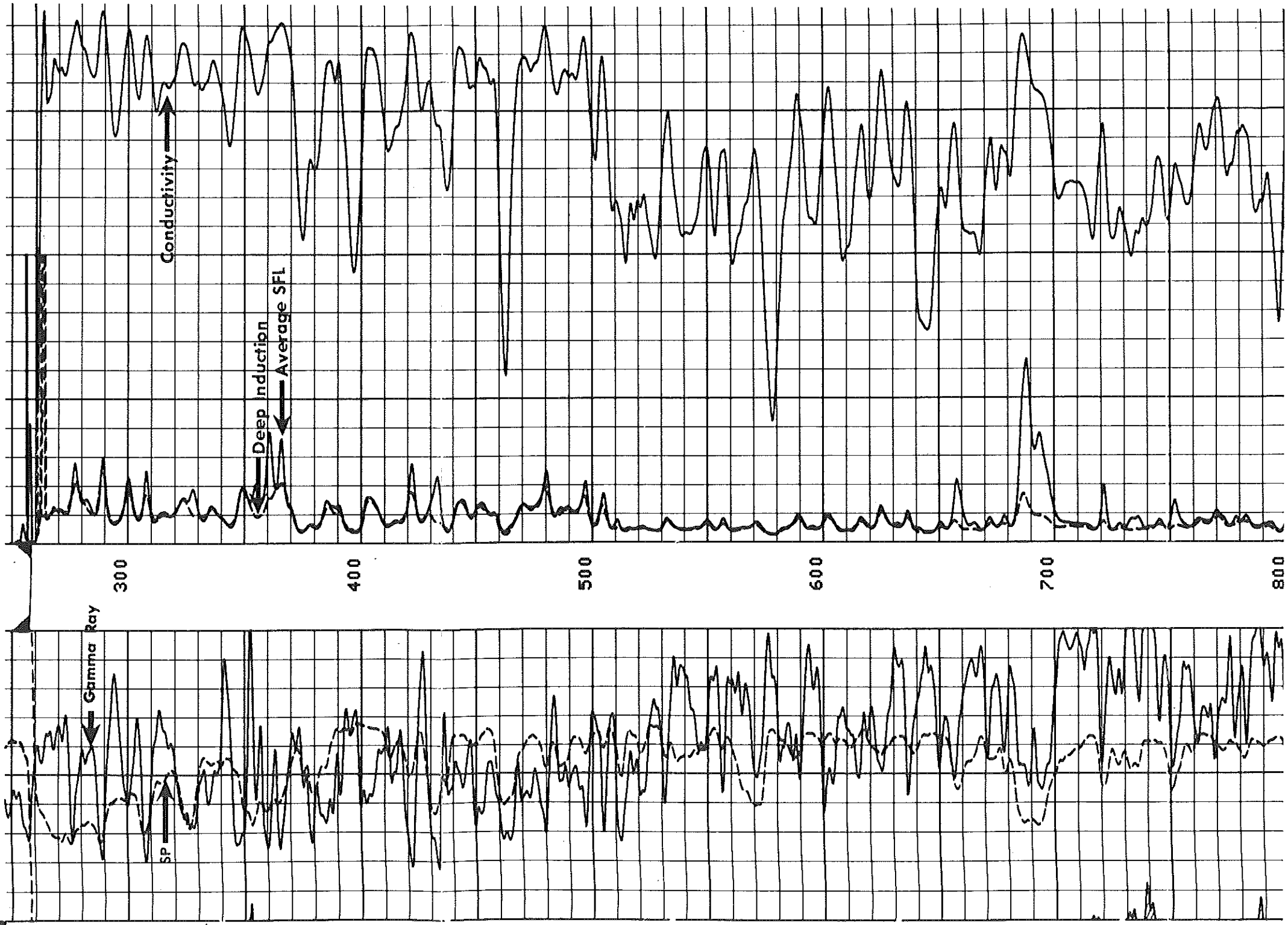
GR (GAPI)	300.00	ILD (OHMM)	50.000
150.00		0.0	
GR (GAPI)	150.00	SFLA(OHMM)	50.000
0.0		0.0	
SP (MV)		CILD(MMHO)	

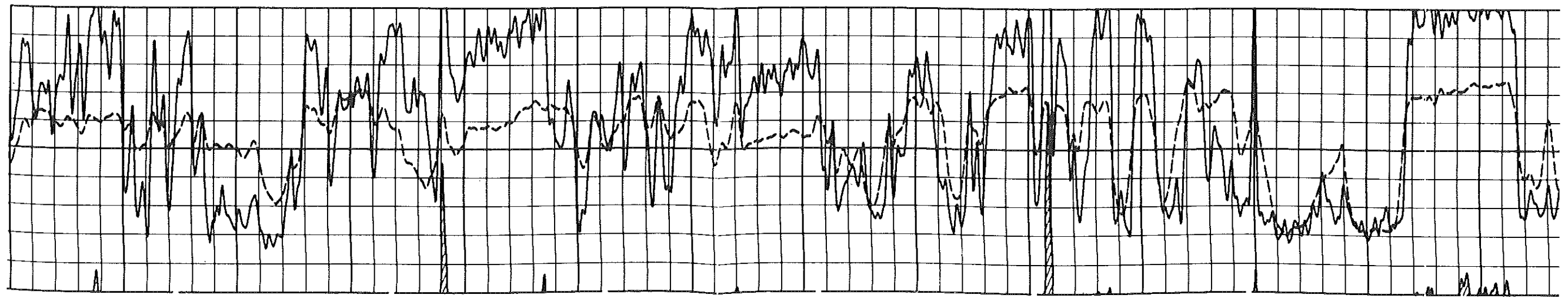
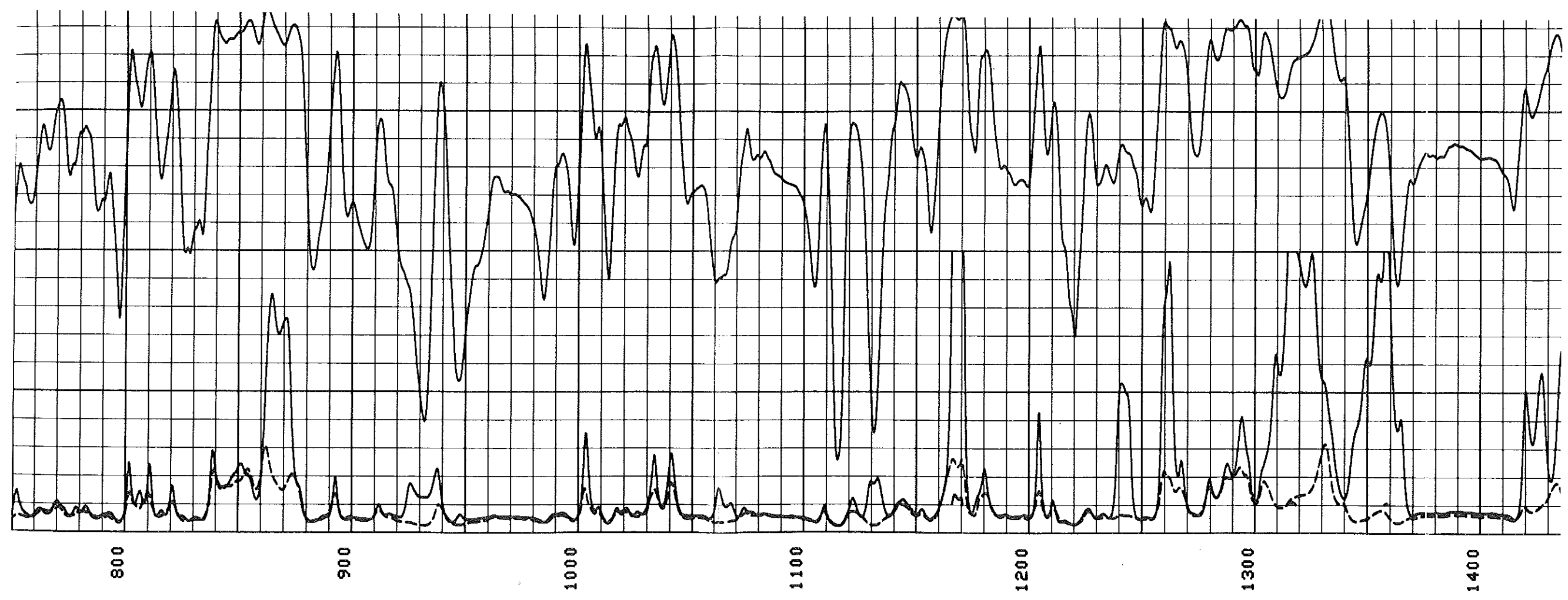
All interpretations are opinions based on inferences from electrical or other measurements and the conditions under which they were made. We shall not be liable or responsible for any loss, costs, damages or expenses incurred by anyone resulting from any interpretation made by any of our officers, agents or employees. These interpretations are also subject to our General Terms and Conditions as set out in our current Price Schedule.

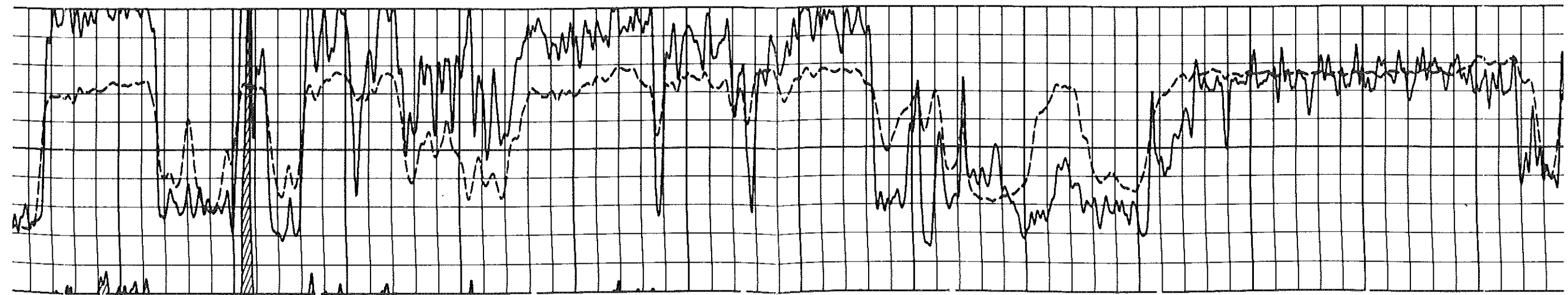
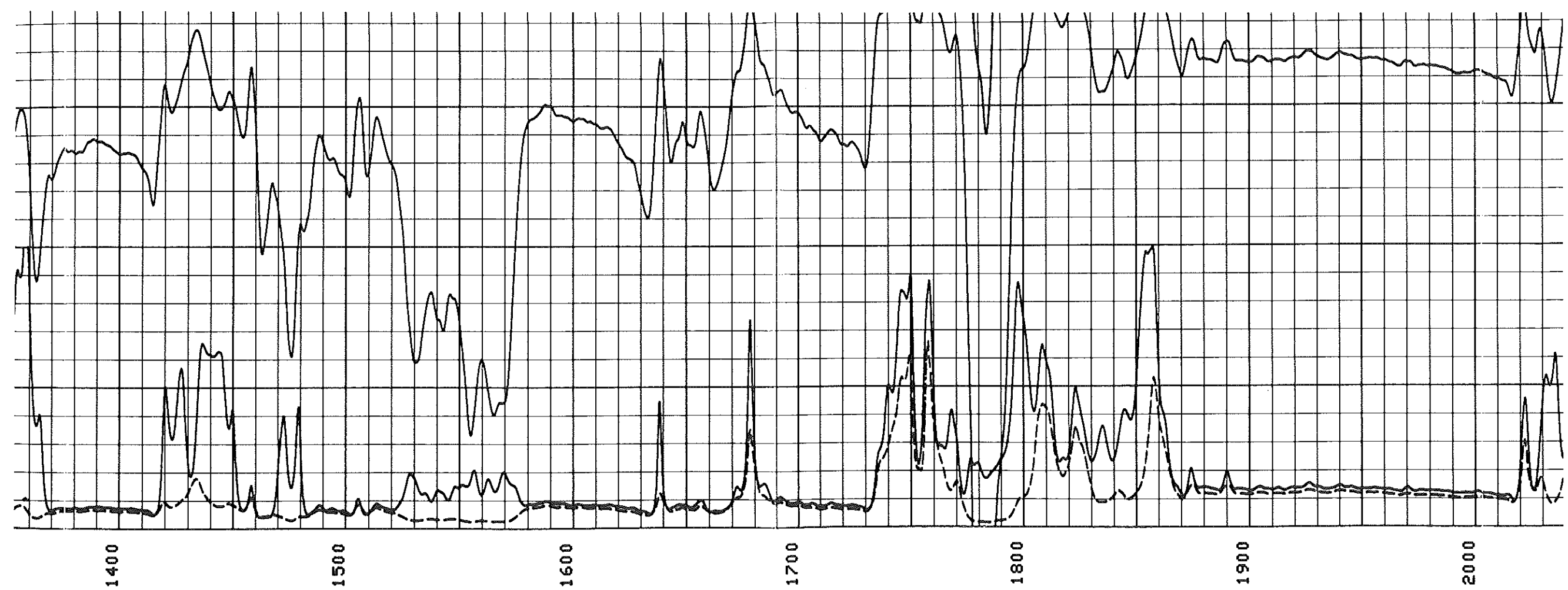
GR (GAPI) 300.00  
 GR (GAPI) 150.00  
 SP (MV) 40.000  
 -160.0

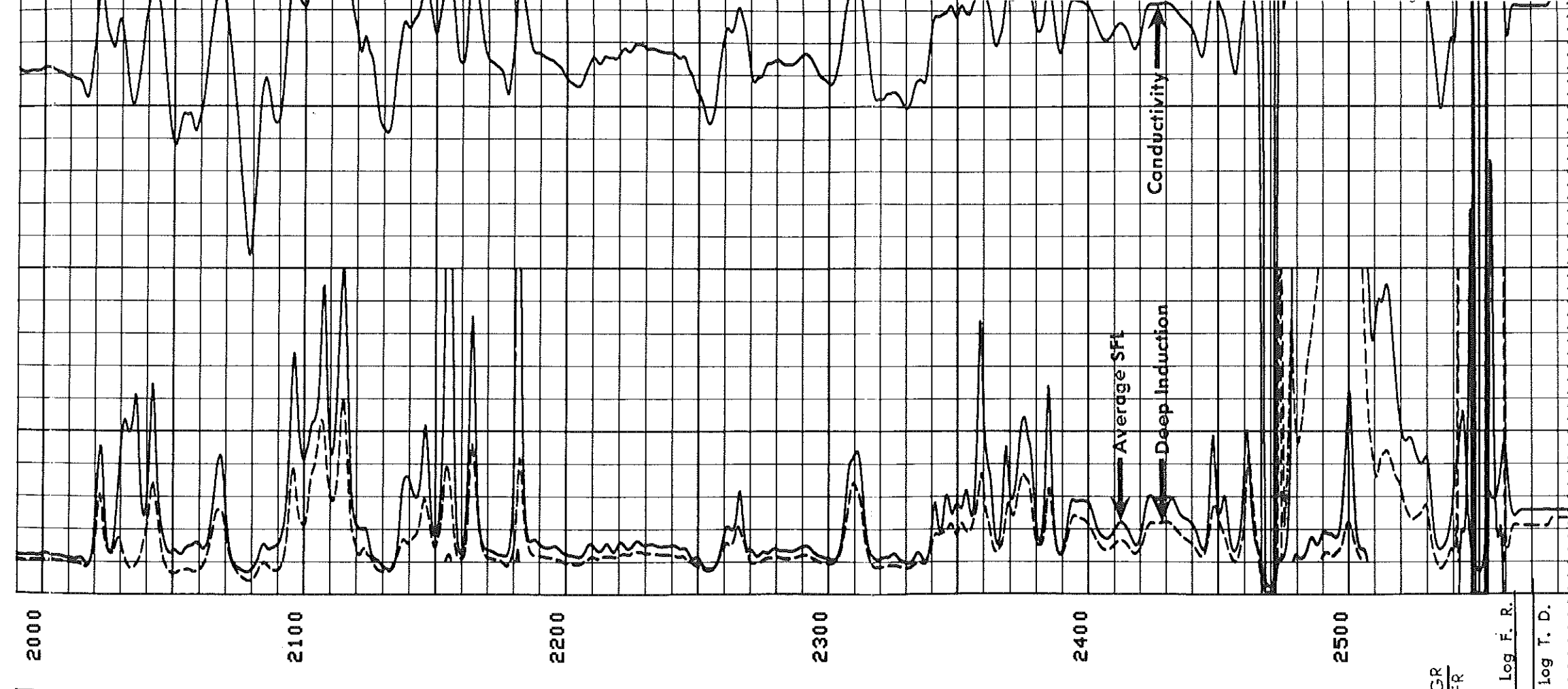
ILD (OHMM) 50.000  
 SFLA (OHMM) 50.000  
 0.0  
 0.0  
 1000.0  
 CILD (MMHD) 0

FILE 10









Log F. R.  
log T. D.

FILE

10

GR (GAPI)	300.00
GR (GAPI)	150.00
SP (MV)	40.000

ILD (OHMM)	50.000
SFLA(OHMM)	50.000
CILD(MMHD)	1000.0