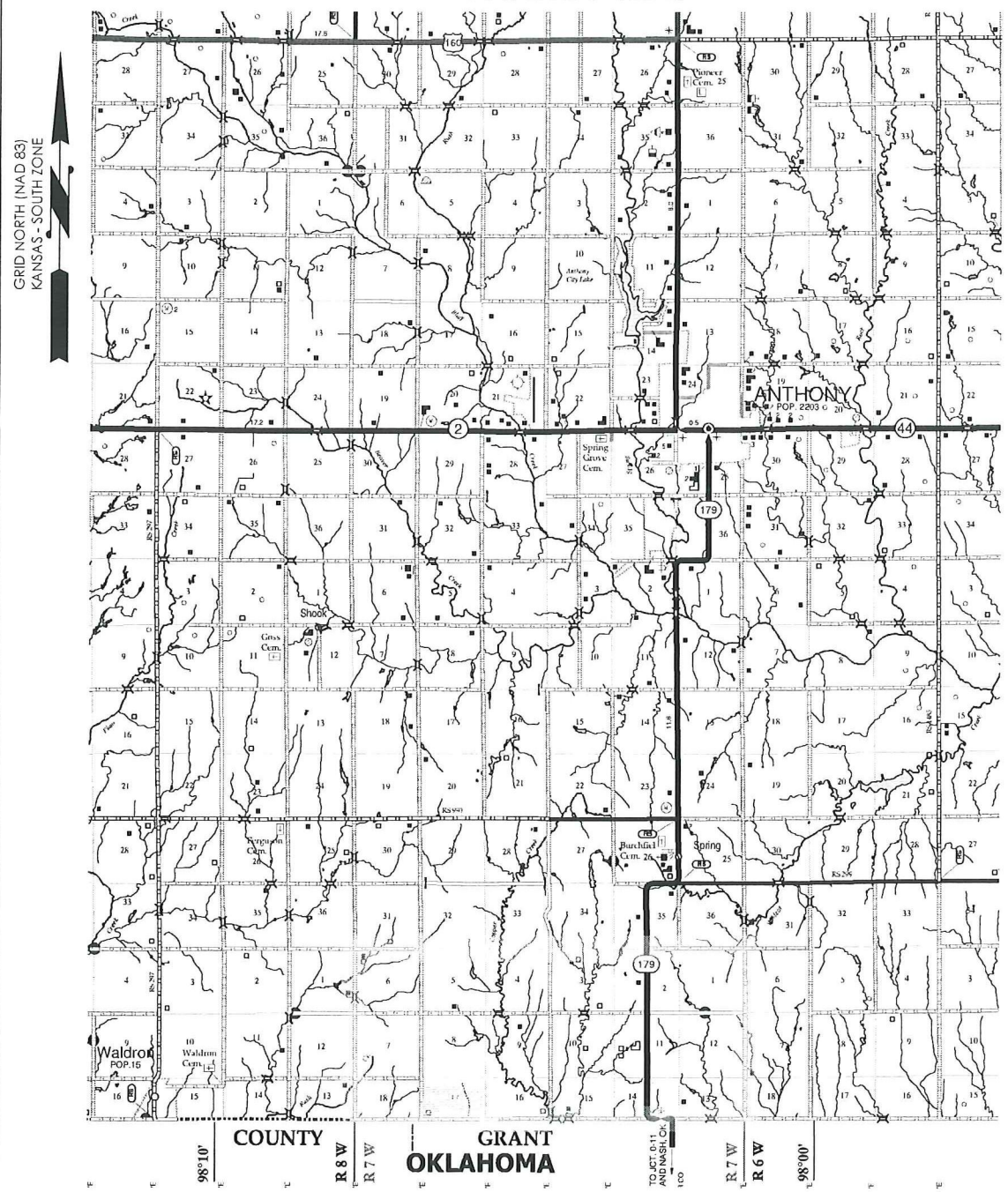


170 Commerce Road, Building 201
 Conway, Arkansas 72032
 501.328.3316 | 501.328.3325 f
 www.craftontull.com

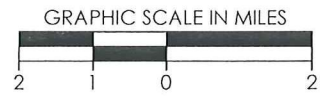


Crafton Tull
 SURVEYING

VICINITY MAP



SEC. 17 TWP. 35S RNG. 07W
 COUNTY: HARPER STATE: KS
 OPERATOR: SANDRIDGE ENERGY, INC.



REVISION		SandRidge	
▲	REVISED SHL (01-30-2012) DUE TO DRILLING'S REQUEST		
		"SHEA #2-17 SWD" PART OF THE E1/2 OF SECTION 17, T-35-S, R-07-W PROPOSED DRILL SITE HARPER COUNTY, KANSAS	
		SCALE: 1/2" = 1 MILE	DRAWN BY: S.ANDER
		PLOT DATE: 01-30-2012	SHEET NO.: 3 OF 3

AMENDED S.L.

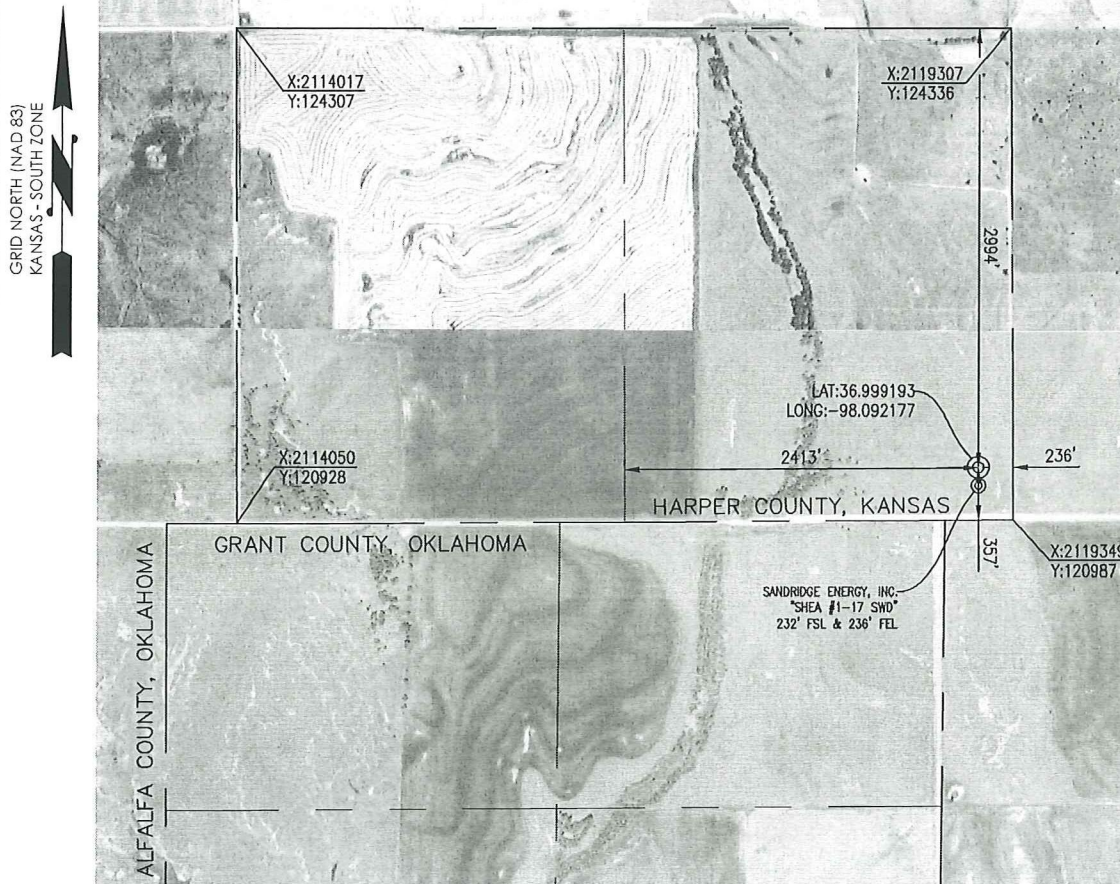
170 Commerce Road, Building 201
Conway, Arkansas 72032
501.328.3316 f 501.328.3325 f
www.craftontull.com



Crafton Tull
SURVEYING

HARPER COUNTY, KANSAS

357' FSL - 236' FEL SECTION 17 TOWNSHIP 35S RANGE 07W 6TH P.M.



THE COORDINATES ARE BASED ON NAD83 STATE PLANE COORDINATE SYSTEM AS PROCESSED BY OPUS USING THESE STATIONS: AFS18 UMINO LAMONT COORS ARP. AFS25 VICI COORS ARP. & AFS62 HVLIK HAVILAND COORS ARP.

ELEVATION:

1286' GR. AT STAKE

OPERATOR: SANDRIDGE ENERGY, INC.

WELL NO: #2-17 SWD

LEASE NAME: SHEA

TOPOGRAPHIC & VEGETATION: LOCATION FELL IN A FIELD

GOOD DRILL SITE: YES

REFERENCE STAKES OR ALTERNATE LOCATION STAKES SET: NONE

BEST ACCESSIBILITY TO LOCATION: SOUTH OR EAST LINE

DISTANCE & DIRECTION

FROM HWY JCT OR TOWN: FROM THE JCT. OF KS-179 & SW 106 RD/EO010 RD (MANCHESTER, OK), TRAVEL WEST ON SW 106 RD/EO010 RD (STATE LINE) FOR ±2.6 MILES TO THE SE CORNER OF SECTION 17, T35S-R07W.

(THE FOLLOWING INFORMATION WAS GATHERED USING A GPS RECEIVER ACCURACY ±2-3 METERS)

GPS DATUM: NAD-27
LAT: 36.999193
LONG: -98.092177

STATE PLANE COORDINATES:
ZONE: KS-SOUTH
X: 2119108.982
Y: 121340.810

DISTANCES SHOWN IN (PARENTHESIS) ARE CALCULATED BASED UPON THE QUARTER SECTION BEING 2640 FEET, THOSE SHOWN IN [BRACKETS] ARE BASED ON GLO (GENERAL LAND OFFICE) DISTANCES AND HAVE NOT BEEN MEASURED.

SURVEYOR'S CERTIFICATE:

DATE STAKED: 01-30-2012

I, C. ED GRAY, KANSAS LICENSED PROFESSIONAL LAND SURVEYOR, NO. 1404, DO HEREBY CERTIFY THAT THIS PLAT REPRESENTS THE RESULTS OF A SURVEY MADE ON THE GROUND UNDER MY SUPERVISION.

GENERAL NOTES:

THE TIES AND FOOTAGES SHOWN ON THIS PLAT ARE FROM LINES OF OCCUPATION FROM A SURVEY MADE ON THE GROUND AND / OR BEARING AND DISTANCES FROM THE GENERAL LAND OFFICE PLAT OF THE AREA SHOWN AND MAY NOT BE THE ACTUAL PROPERTY CORNERS. THIS PLAT DOES NOT REPRESENT A TRUE BOUNDARY SURVEY.



1/30/2012

GRAPHIC SCALE IN FEET

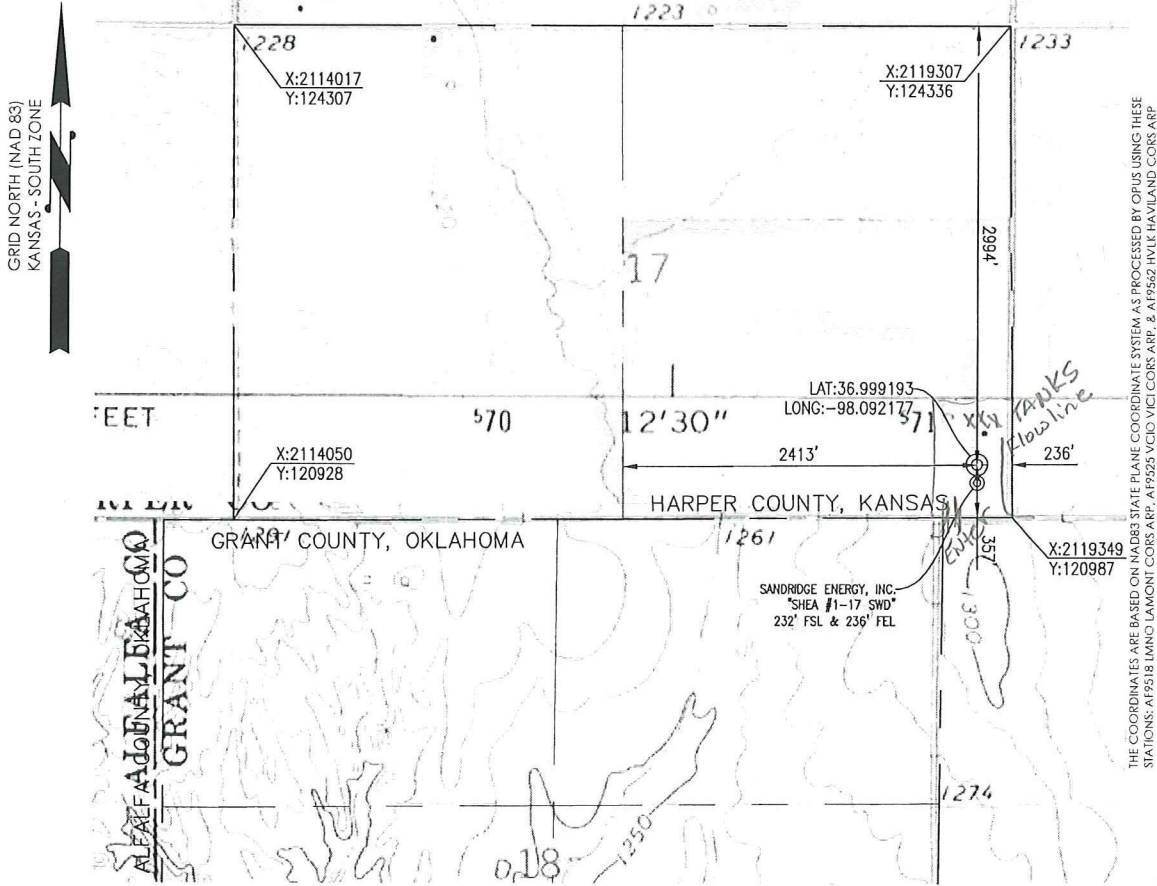


REVISION	SandRidge		
REVISION			
▲ REVISION SHL (01-30-2012) DUE TO DRILLING'S REQUEST	"SHEA #2-17 SWD" PART OF THE E1/2 OF SECTION 17, T-35-S, R-07-W PROPOSED DRILL SITE HARPER COUNTY, KANSAS		
	SCALE: 1" = 1000'	DRAWN BY: S.ANDER	SHEET NO.: 2 OF 3
	PLOT DATE: 01-30-2012		

Amended S.C.



HARPER COUNTY, KANSAS
357' FSL- 236' FEL SECTION 17 TOWNSHIP 35S RANGE 07W 6TH P.M.



GRID NORTH (NAD 83)
KANSAS - SOUTH ZONE

THE COORDINATES ARE BASED ON NAD83 STATE PLANE COORDINATE SYSTEM AS PROCESSED BY OPUS USING THESE STATIONS: AF9518 IMHO LAMONT COBS ARP, AF9525 VCI0 COBS ARP, & AF9562 HVLK HAVILAND COBS ARP

OPERATOR: SANDRIDGE ENERGY, INC.

WELL NO: #2-17 SWD

ELEVATION:
1286' GR. AT STAKE

LEASE NAME: SHEA

TOPOGRAPHIC & VEGETATION: LOCATION FELL IN A FIELD

GOOD DRILL SITE: YES REFERENCE STAKES OR ALTERNATE LOCATION STAKES SET: NONE

BEST ACCESSIBILITY TO LOCATION: SOUTH OR EAST LINE

DISTANCE & DIRECTION FROM HWY JCT OR TOWN: FROM THE JCT. OF KS-179 & SW 106 RD/E0010 RD (MANCHESTER, OK), TRAVEL WEST ON SW 106 RD/E0010 RD (STATE LINE) FOR ±2.6 MILES TO THE SE CORNER OF SECTION 17, T35S-R07W.

(THE FOLLOWING INFORMATION WAS GATHERED USING A GPS RECEIVER ACCURACY ±2-3 METERS) GPS DATUM: NAD-27 LAT: 36.999193 LONG: -98.092177 STATE PLANE COORDINATES: ZONE: KS-SOUTH X: 2119108.982 Y: 121340.810

SURVEYOR'S CERTIFICATE: DATE STAKED: 01-30-2012 I, C. ED GRAY, KANSAS LICENSED PROFESSIONAL LAND SURVEYOR, NO. 1404, DO HEREBY CERTIFY THAT THIS PLAT REPRESENTS THE RESULTS OF A SURVEY MADE ON THE GROUND UNDER MY SUPERVISION.

GENERAL NOTES: THE TIES AND FOOTAGES SHOWN ON THIS PLAT ARE FROM LINES OF OCCUPATION FROM A SURVEY MADE ON THE GROUND AND / OR BEARING AND DISTANCES FROM THE GENERAL LAND OFFICE PLAT OF THE AREA SHOWN AND MAY NOT BE THE ACTUAL PROPERTY CORNERS. THIS PLAT DOES NOT REPRESENT A TRUE BOUNDARY SURVEY.

DISTANCES SHOWN IN (PARENTHESIS) ARE CALCULATED BASED UPON THE QUARTER SECTION BEING 2640 FEET, THOSE SHOWN IN [BRACKETS] ARE BASED ON GLO (GENERAL LAND OFFICE) DISTANCES AND HAVE NOT BEEN MEASURED.



1/30/2012

GRAPHIC SCALE IN FEET



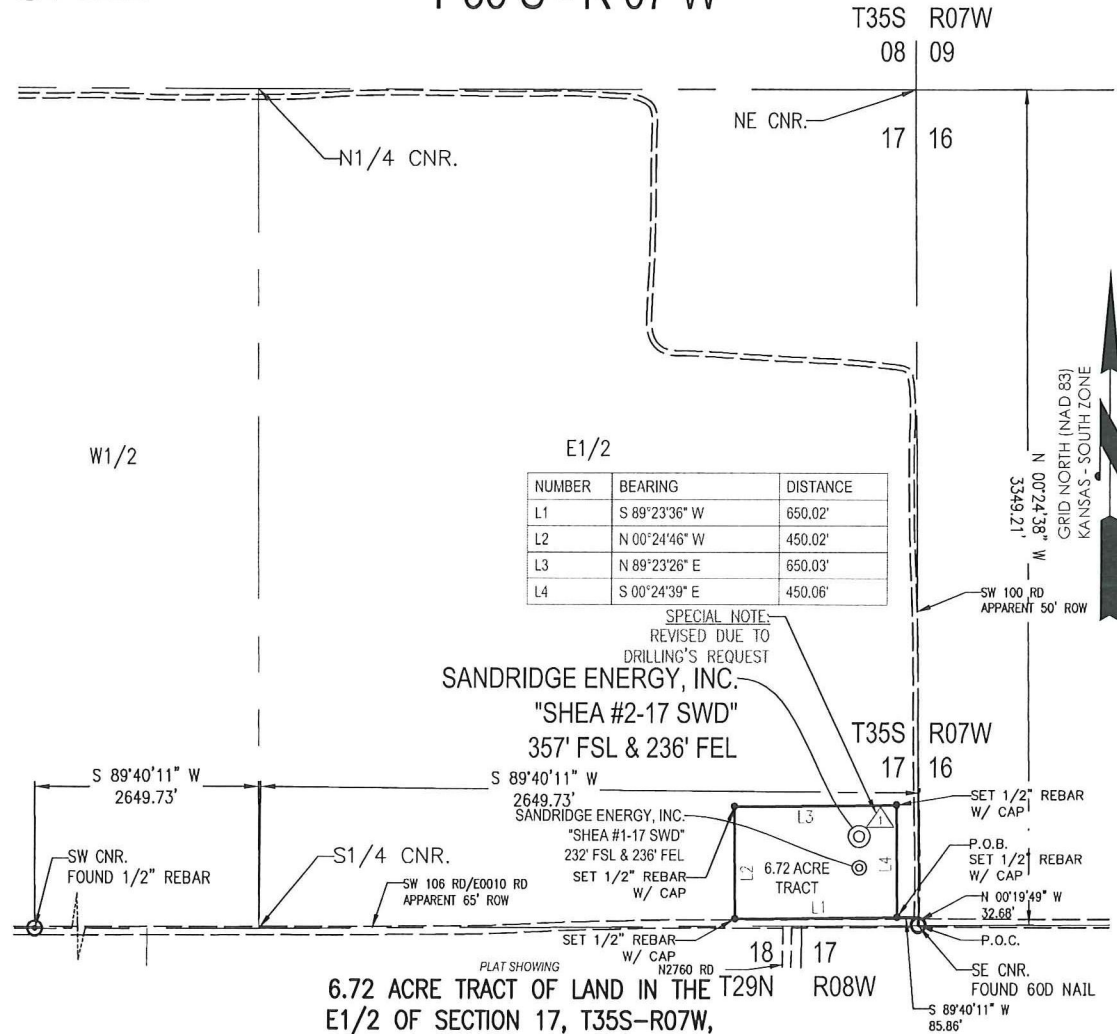
REVISION	<p>"SHEA #2-17 SWD" PART OF THE E1/2 OF SECTION 17, T-35-S, R-07-W PROPOSED DRILL SITE HARPER COUNTY, KANSAS</p>		
REVISED SHL (01-30-2012) DUE TO DRILLING'S REQUEST			
SCALE: 1" = 1000'	PLOT DATE: 01-30-2012	DRAWN BY: S.ANDER	SHEET NO.: 1 OF 3

AMENDED S.L.



HARPER COUNTY, KANSAS

T 35 S - R 07 W



NUMBER	BEARING	DISTANCE
L1	S 89°23'36\" W	650.02'
L2	N 00°24'46\" W	450.02'
L3	N 89°23'26\" E	650.03'
L4	S 00°24'39\" E	450.06'

SPECIAL NOTE:
REVISED DUE TO
DRILLING'S REQUEST
SANDRIDGE ENERGY, INC.
"SHEA #2-17 SWD"
357' FSL & 236' FEL

METES AND BOUNDS DESCRIPTION (6.72 ACRE TRACT)

PART OF THE E1/2 OF SECTION 17, TOWNSHIP 35 SOUTH, RANGE 07 WEST, HARPER COUNTY, KANSAS, MORE PARTICULARLY DESCRIBED AS FOLLOWS:

COMMENCING AT THE SE CORNER OF SAID SECTION 17;
THENCE N 00°19'49\" W ALONG THE EAST LINE OF SAID SECTION 17, A DISTANCE OF 32.68 FEET;
THENCE S 89°40'11\" W, A DISTANCE OF 85.86 FEET TO THE POINT OF BEGINNING;
THENCE S 89°23'36\" W, A DISTANCE OF 650.02 FEET;
THENCE N 00°24'46\" W, A DISTANCE OF 450.02 FEET;
THENCE N 89°23'26\" E, A DISTANCE OF 650.03 FEET;
THENCE S 00°24'39\" E, A DISTANCE OF 450.06 FEET TO THE POINT OF BEGINNING.

SAID TRACT CONTAINING 6.72 ACRES MORE OR LESS OF LAND AS SURVEYED.

THE COORDINATES ARE BASED ON NAD83 STATE PLANE COORDINATE SYSTEM AS PROCESSED BY OPUS USING THESE STATIONS: AF9518 LMNO LAMONT CORS ARP, AF9525 VCIO VICI CORS ARP, & AF9562 HVLK HAVILAND CORS ARP

SURVEYOR'S CERTIFICATE:

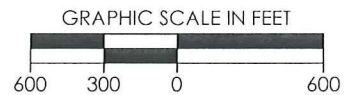
I, C. ED GRAY, KANSAS LICENSED PROFESSIONAL LAND SURVEYOR, NO. 1404, DO HEREBY CERTIFY THAT THIS PLAT REPRESENTS THE RESULTS OF A SURVEY MADE ON THE GROUND UNDER MY SUPERVISION ON THE DATE OF 01-30-2012.

GENERAL NOTES:

THE TIES AND FOOTAGES SHOWN ON THIS PLAT ARE FROM LINES OF OCCUPATION FROM A SURVEY MADE ON THE GROUND AND / OR BEARING AND DISTANCES FROM THE GENERAL LAND OFFICE PLAT OF THE AREA SHOWN AND MAY NOT BE THE ACTUAL PROPERTY CORNERS. THIS PLAT DOES NOT REPRESENT A TRUE BOUNDARY SURVEY.



1/30/2012



REVISION	SandRidge		
▲ REVISED SHL (01-30-2012) DUE TO DRILLING'S REQUEST	"SHEA #2-17 SWD" PART OF THE E1/2 OF SECTION 17, T-35-S, R-07-W PROPOSED DRILL SITE HARPER COUNTY, KANSAS		
	SCALE: 1" = 600'	DRAWN BY: S.ANDER	SHEET NO.: 1 OF 1
	PLOT DATE: 01-30-2012		