



**TRILOBITE TESTING, INC.**

# DRILL STEM TEST REPORT

Berexco LLC  
 2020 N Bramblewood  
 Wichita Ks 67206-1094  
 ATTN: Dana Wreath

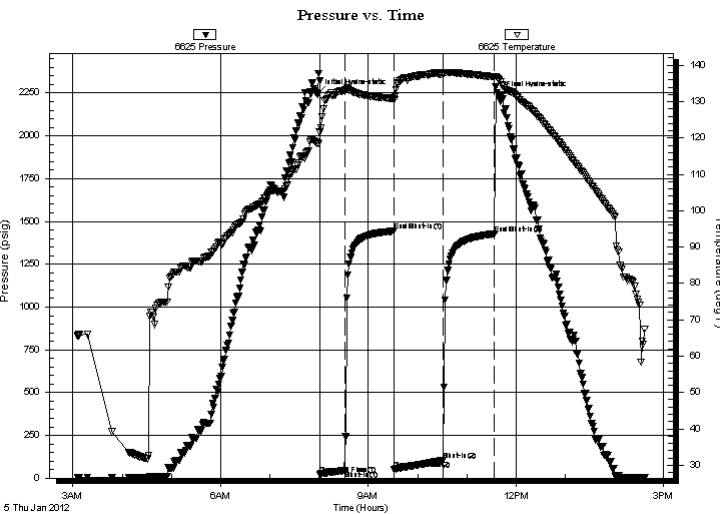
**21-22s-23w Hodgeman**  
**Spahr #1**  
 Job Ticket: 46021 **DST#: 2**  
 Test Start: 2012.01.05 @ 03:05:43

## GENERAL INFORMATION:

Formation: **Miss**  
 Deviated: No Whipstock: ft (KB)  
 Test Type: Conventional Bottom Hole (Reset)  
 Time Tool Opened: 08:01:08 Tester: Ray Schwager  
 Time Test Ended: 14:36:38 Unit No: 42  
 Interval: **4670.00 ft (KB) To 4679.00 ft (KB) (TVD)** Reference Elevations: 2389.00 ft (KB)  
 Total Depth: 4679.00 ft (KB) (TVD) 2374.00 ft (CF)  
 Hole Diameter: 7.85 inches Hole Condition: Fair KB to GR/CF: 15.00 ft

**Serial #: 6625 Inside**  
 Press @ Run Depth: 103.92 psig @ 4671.00 ft (KB) Capacity: 8000.00 psig  
 Start Date: 2012.01.05 End Date: 2012.01.05 Last Calib.: 2012.01.05  
 Start Time: 03:05:43 End Time: 14:36:38 Time On Btm: 2012.01.05 @ 07:58:07  
 Time Off Btm: 2012.01.05 @ 11:39:08

**TEST COMMENT:** 30-IFP-w k bl 1/4"to 2"bl  
 60-ISIP-no bl  
 60-FFP-no bl 1st 6min, then w k surface bl  
 60-FSIP-no bl



## PRESSURE SUMMARY

Time (Min.)	Pressure (psig)	Temp (deg F)	Annotation
0	2244.67	118.53	Initial Hydro-static
4	23.03	121.43	Open To Flow (1)
34	45.62	133.06	Shut-In(1)
94	1443.83	130.90	End Shut-In(1)
94	51.79	130.50	Open To Flow (2)
154	103.92	137.51	Shut-In(2)
216	1427.28	136.80	End Shut-In(2)
222	2232.66	135.98	Final Hydro-static

## Recovery

Length (ft)	Description	Volume (bbl)
190.00	MW 10%M90%W	0.93

\* Recovery from multiple tests

## Gas Rates

Choke (inches)	Pressure (psig)	Gas Rate (Mcf/d)



**TRILOBITE  
TESTING, INC.**

# DRILL STEM TEST REPORT

**FLUID SUMMARY**

Berexco LLC

**21-22s-23w Hodgeman**

2020 N Bramblewood  
Wichita Ks 67206-1094

**Spahr #1**

Job Ticket: 46021

**DST#: 2**

ATTN: Dana Wreath

Test Start: 2012.01.05 @ 03:05:43

## Mud and Cushion Information

Mud Type: Gel Chem

Cushion Type:

Oil API:

deg API

Mud Weight: 9.00 lb/gal

Cushion Length:

ft

Water Salinity:

23000 ppm

Viscosity: 66.00 sec/qt

Cushion Volume:

bbbl

Water Loss: 6.40 in<sup>3</sup>

Gas Cushion Type:

Resistivity: ohm.m

Gas Cushion Pressure:

psig

Salinity: 7000.00 ppm

Filter Cake: 1.00 inches

## Recovery Information

Recovery Table

Length ft	Description	Volume bbbl
190.00	MW 10%M90%W	0.934

Total Length: 190.00 ft      Total Volume: 0.934 bbl

Num Fluid Samples: 0

Num Gas Bombs: 0

Serial #:

Laboratory Name:

Laboratory Location:

Recovery Comments: RW .23@75F

Serial #: 6625

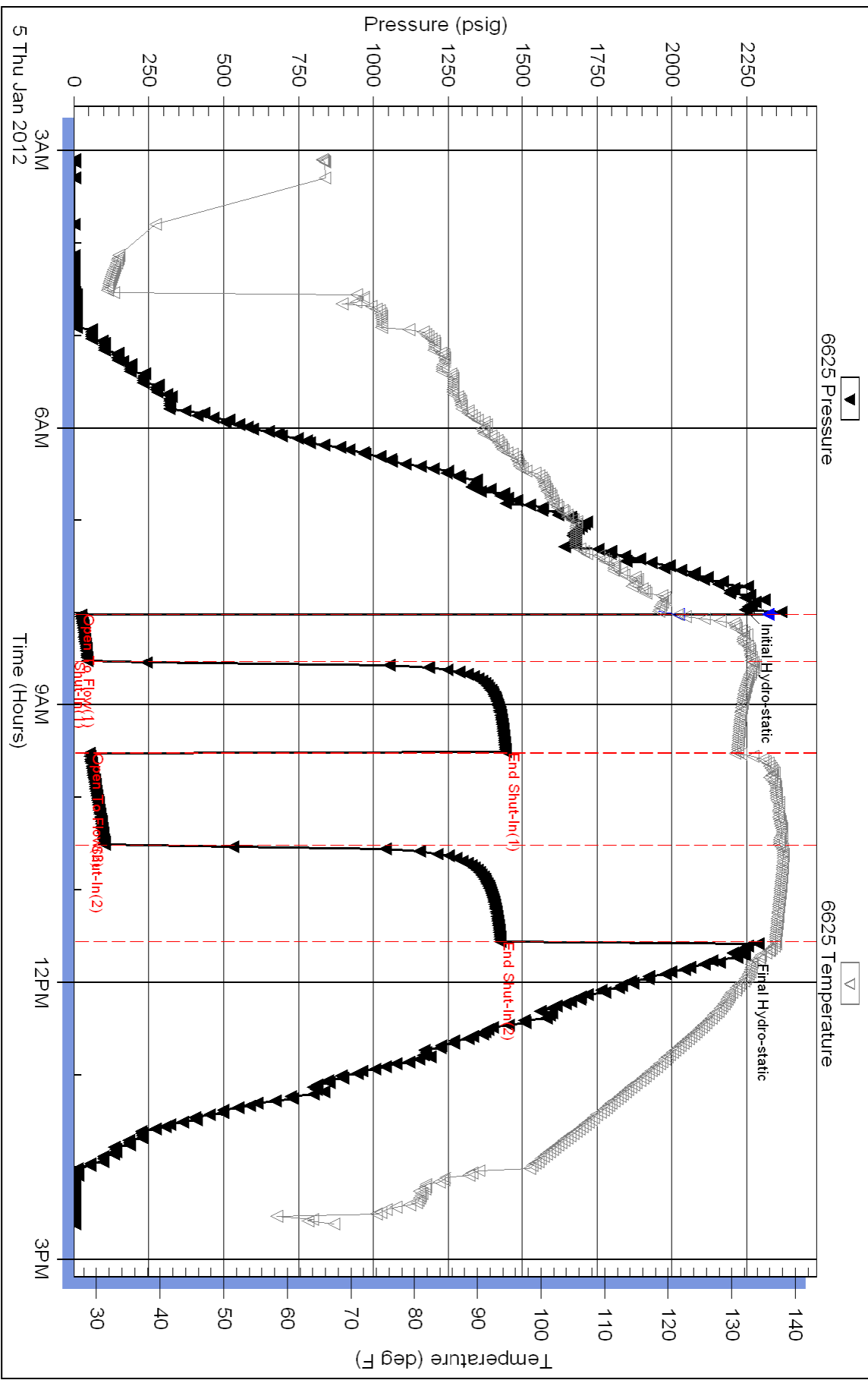
Inside

Berexco LLC

Spahr #1

DST Test Number: 2

### Pressure vs. Time



Triobite Testing, Inc

Ref. No: 46021

Printed: 2012.01.05 @ 15:01:48