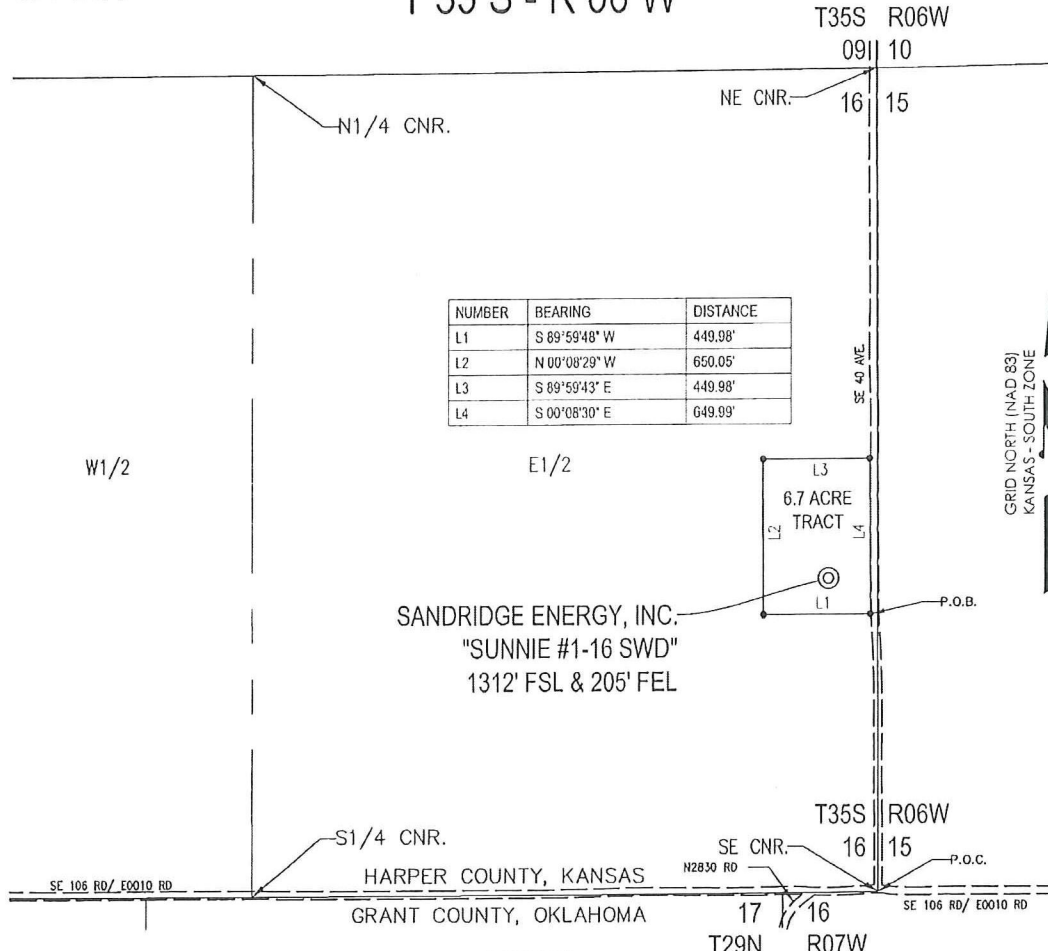


T 35 S - R 06 W



NUMBER	BEARING	DISTANCE
L1	S 89°59'48" W	449.98'
L2	N 00°08'29" W	650.05'
L3	S 89°59'43" E	449.98'
L4	S 00°08'30" E	649.99'



PLAT SHOWING
**6.7 ACRE TRACT OF LAND IN THE
 E1/2 OF SECTION 16, T35S-R06W,
 HARPER COUNTY, KANSAS**

METES AND BOUNDS DESCRIPTION (6.7 ACRE TRACT)

PART OF THE E1/2 OF SECTION 16, TOWNSHIP 35 SOUTH, RANGE 06 WEST, HARPER COUNTY, KANSAS, MORE PARTICULARLY DESCRIBED AS FOLLOWS:

COMMENCING AT THE SE CORNER OF SAID SECTION 16;
 THENCE N 00°05'58" W ALONG THE EAST LINE OF SAID SECTION 16, A DISTANCE OF 1161.37 FEET;
 THENCE S 89°54'02" W, A DISTANCE OF 30.06 FEET TO THE POINT OF BEGINNING;
 THENCE S 89°59'48" W, A DISTANCE OF 449.98 FEET;
 THENCE N 00°08'29" W, A DISTANCE OF 650.05 FEET;
 THENCE S 89°59'43" E, A DISTANCE OF 449.98 FEET;
 THENCE S 00°08'30" E, A DISTANCE OF 649.99 FEET TO THE POINT OF BEGINNING.

SAID TRACT CONTAINING 6.7 ACRES OF LAND AS SURVEYED.

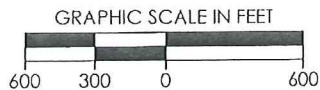
SURVEYOR'S CERTIFICATE:

I, C. ED GRAY, KANSAS LICENSED PROFESSIONAL LAND SURVEYOR, NO. 1404, DO HEREBY CERTIFY THAT THIS PLAT REPRESENTS THE RESULTS OF A SURVEY MADE ON THE GROUND UNDER MY SUPERVISION.

8/26/2011

GENERAL NOTES:

THE TIES AND FOOTAGES SHOWN ON THIS PLAT ARE FROM LINES OF OCCUPATION FROM A SURVEY MADE ON THE GROUND AND / OR BEARING AND DISTANCES FROM THE GENERAL LAND OFFICE PLAT OF THE AREA SHOWN AND MAY NOT BE THE ACTUAL PROPERTY CORNERS. THIS PLAT DOES NOT REPRESENT A TRUE BOUNDARY SURVEY.



REVISION	SandRidge		
	"SUNNIE #1-16 SWD" PART OF THE E1/2 OF SECTION 16, T-35-S, R-06-W PROPOSED DRILL SITE HARPER COUNTY, KANSAS		
	SCALE: 1" = 600'	DRAWN BY: S.ANDER	SHEET NO.: 1 OF 1
	PLOT DATE: 08-26-2011		