



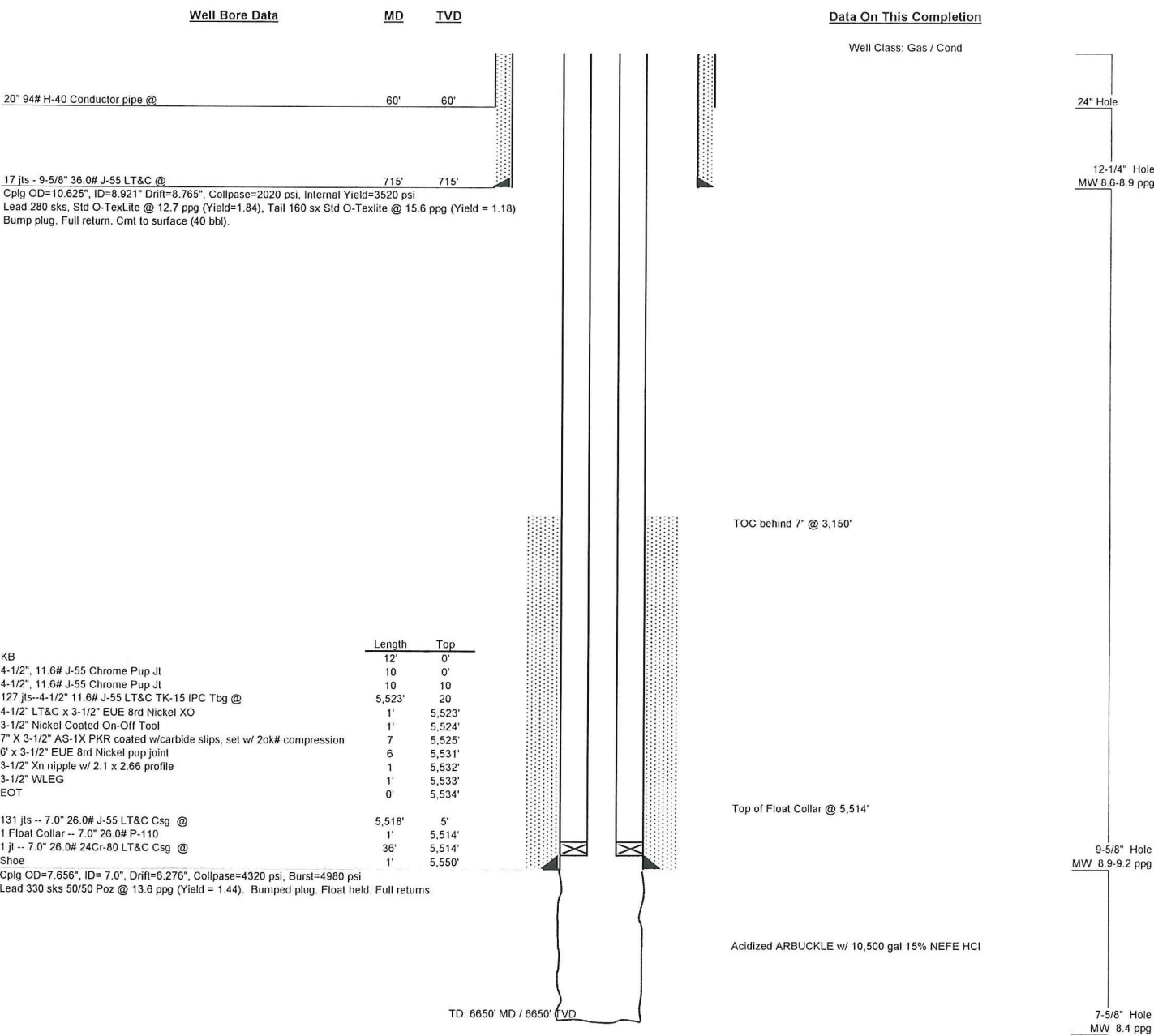
Current

Field Stranathan
 County Harper
 State Kansas
 Well **Sunnie 1-16 SWD**
 Location SEC 16, TWP 35S, RGE 6W
 KB 1239
 GL 1227

Wellbore Schematic

15-077-21779
 API NO.

Original Completion	
Current	X
Proposed	



	Length	Top
KB	12'	0'
4-1/2", 11.6# J-55 Chrome Pup Jt	10'	0'
4-1/2", 11.6# J-55 Chrome Pup Jt	10'	10'
127 jts--4-1/2" 11.6# J-55 LT&C TK-15 IPC Tbg @	5,523'	20'
4-1/2" LT&C x 3-1/2" EUE 8rd Nickel XO	1'	5,523'
3-1/2" Nickel Coated On-Off Tool	1'	5,524'
7" X 3-1/2" AS-1X PKR coated w/carbide slips, set w/ 20k# compression	7'	5,525'
6' x 3-1/2" EUE 8rd Nickel pup joint	6'	5,531'
3-1/2" Xn nipple w/ 2.1 x 2.66 profile	1'	5,532'
3-1/2" WLEG	1'	5,533'
EOT	0'	5,534'
131 jts -- 7.0" 26.0# J-55 LT&C Csg @	5,518'	5'
1 Float Collar -- 7.0" 26.0# P-110	1'	5,514'
1 jt -- 7.0" 26.0# 24Cr-80 LT&C Csg @	36'	5,514'
Shoe	1'	5,550'

Cplg OD=7.656", ID=7.0", Drift=6.276", Collpase=4320 psi, Burst=4980 psi
 Lead 330 sks 50/50 Poz @ 13.6 ppg (Yield = 1.44). Bumped plug. Float held. Full returns.