



## Woolsey Operating Company, LLC

Scale 1:240 (5"=100') Imperial

Measured Depth Log

Well Name: Tucker B-4 H  
Location: Section 11 - Township 34 South - Range 11 West  
License Number: API: Region: Barber County, KS  
Spud Date: September 23, 2011 Drilling Completed:  
Surface Coordinates: 210'FNL, 760'FWL or App. NW NE NW NW  
Schubach Field  
Bottom Hole  
Coordinates:  
Ground Elevation (ft): 1400' K.B. Elevation (ft): 1409-  
Logged Interval (ft): 4065' To: Total Depth (ft):  
Formation: Kansas City -----> Mississippi  
Type of Drilling Fluid:

Printed by WellSight Log Viewer from WellSight Systems 1-800-447-1534 www.WellSight.com

### OPERATOR

Company: Woolsey Operating Company, LLC  
Address: 125 N. Market, Suite 1000  
Wichita, KS 67202

### GEOLOGIST

Name: Billy G. Klaver  
Company: Woolsey Operating Co. LLC  
Address: 125 N. Market, Wichita Kansas, 67202

### COMMENTS

Surface Casing:  
Production Casing:

Deviation Surveys:  
Pipe Strap @  
Contractor Bit Record:

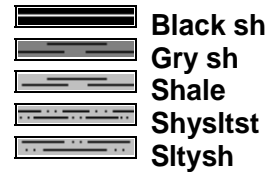
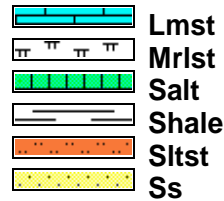
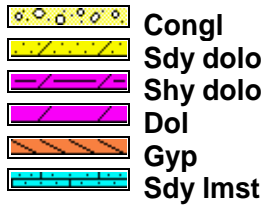
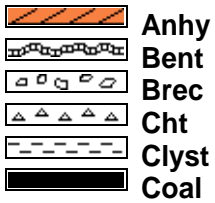
Gas Detector:  
Mud System:  
DSTs:

Note: Log Depths

## DSTs

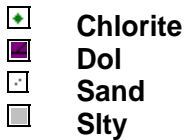
## CREWS

### ROCK TYPES

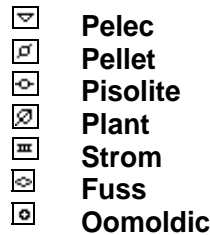
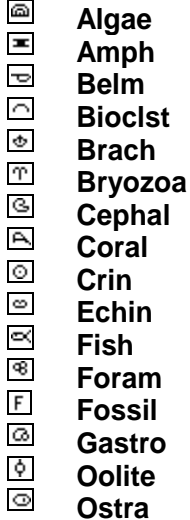


### ACCESSORIES

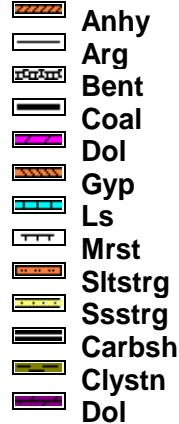
#### MINERAL



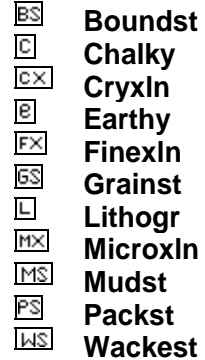
#### FOSSIL



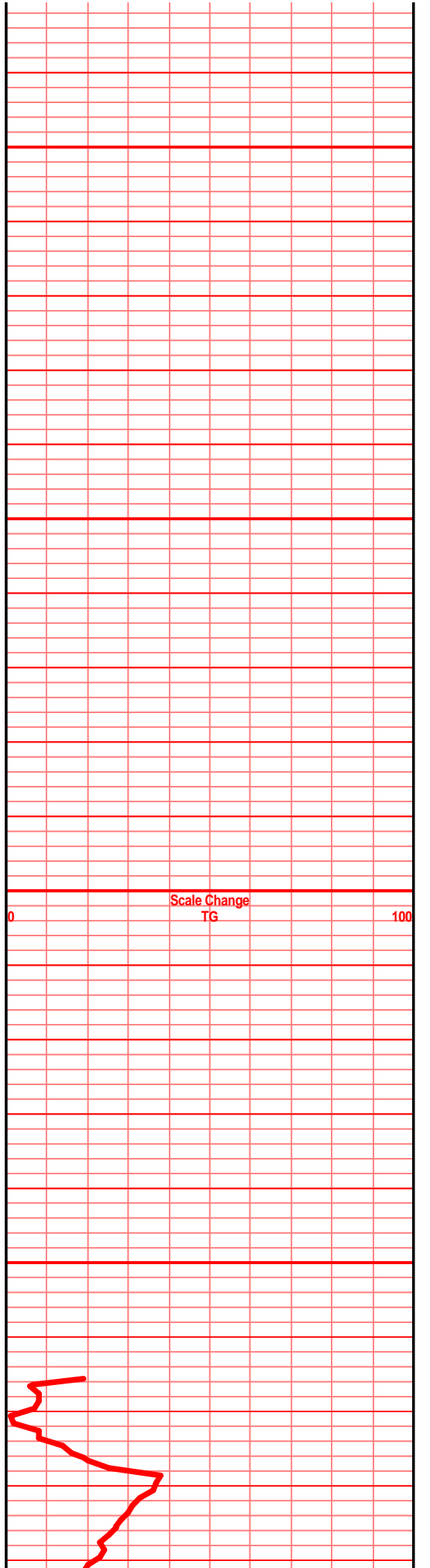
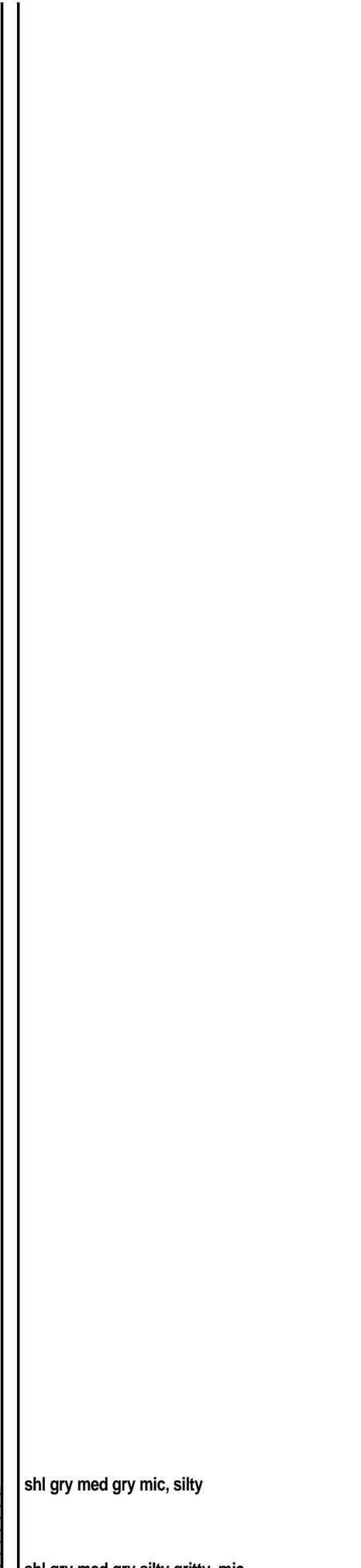
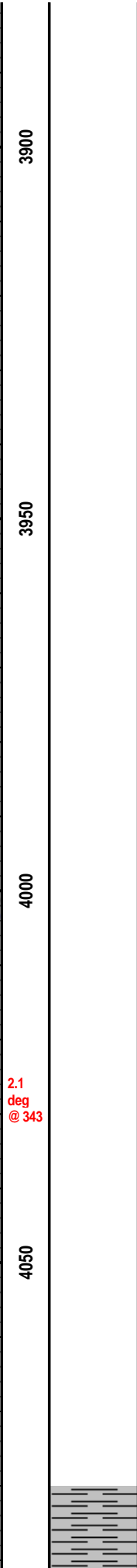
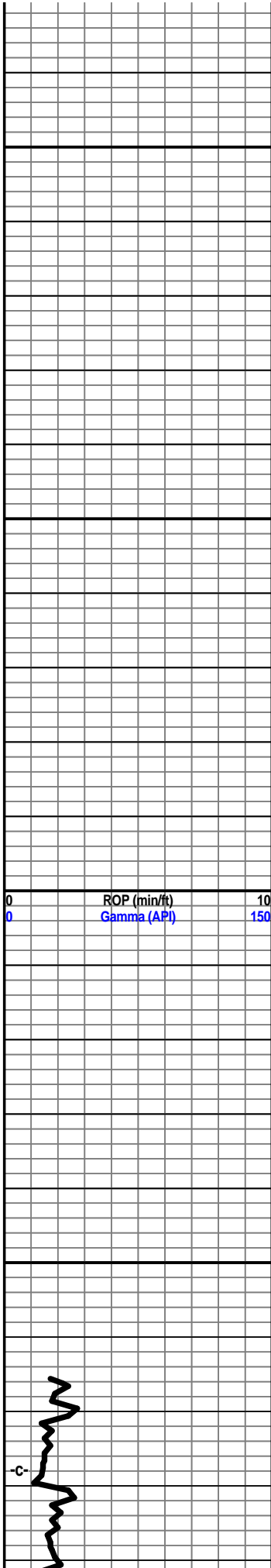
#### STRINGER

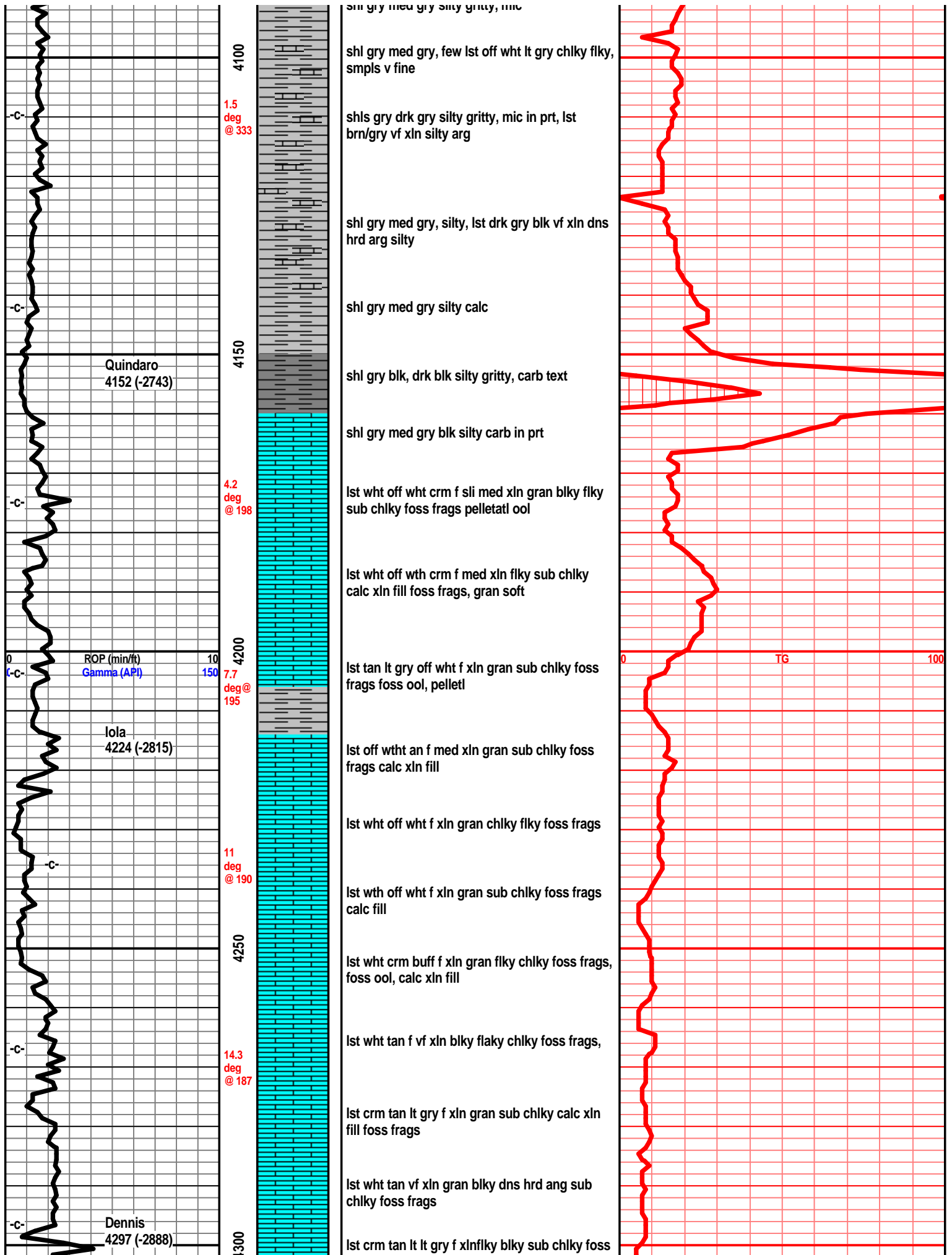


#### TEXTURE









shl gry med gry silty gritty, mic

shl gry med gry, few lst off wht lt gry chlky flky, smpls v fine

shls gry drk gry silty gritty, mic in prt, Ist brn/gry vf xln silty arg

shl gry med gry, silty, Ist drk gry blk vf xln dns hrd arg silty

shl gry med gry silty calc

shl gry blk, drk blk silty gritty, carb text

shl gry med gry blk silty carb in prt

Ist wht off wht crm f sli med xln gran blkly flky sub chlky foss frags pelletatl ool

Ist wht off wth crm f med xln flky sub chlky calc xln fill foss frags, gran soft

Ist tan lt gry off wht f xln gran sub chlky foss frags foss ool, pelletl

Ist off wth an f med xln gran sub chlky foss frags calc xln fill

Ist wht off wht f xln gran chlky flky foss frags

Ist wth off wht f xln gran sub chlky foss frags calc fill

Ist wht crm buff f xln gran flky chlky foss frags, foss ool, calc xln fill

Ist wht tan f vf xln blkly flaky chlky foss frags,

Ist crm tan lt gry f xln gran sub chlky calc xln fill foss frags

Ist wht tan vf xln gran blkly dns hrd ang sub chlky foss frags

Ist crm tan lt gry f xln flky blkly sub chlky foss

Quindaro  
4152 (-2743)

Iola  
4224 (-2815)

Dennis  
4297 (-2888)

ROP (min/ft) 10  
Gamma (API) 150

1.5 deg @ 333

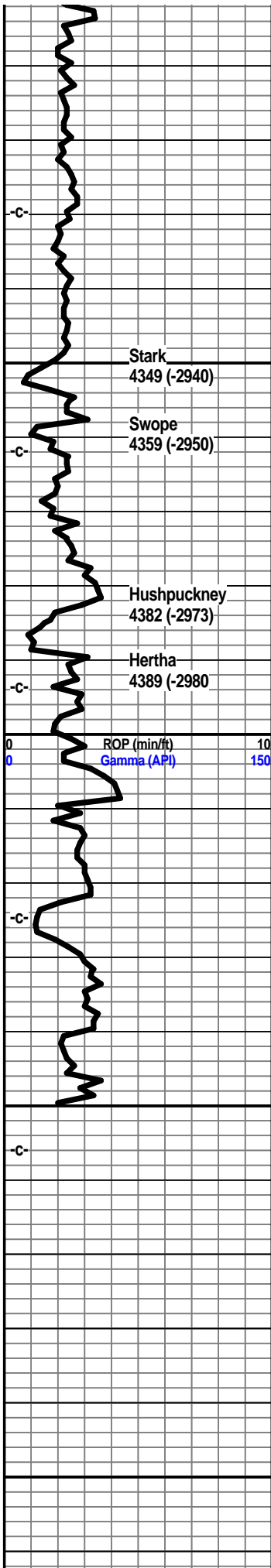
4.2 deg @ 198

7.7 deg @ 195

11 deg @ 190

14.3 deg @ 187

TG



frags

lst wth tan f xln chlky foss frags, foss ool, calc xln fill

lst wht off wht f xln gran blkly flky sub chlky foss frags, calc xln fill

lst wht lt tan f xln blkly ang chlky foss frags foss ool, pelletal

shl gry blk, blk carb, lst aa

lst crm tan f xln blkly tr chlky tr calc xln fill, tr chrt wht lt gry shrp opaq

lst crm tan f xln blkly ang sub chlky foss frags, chrt wht tan shrp frsh

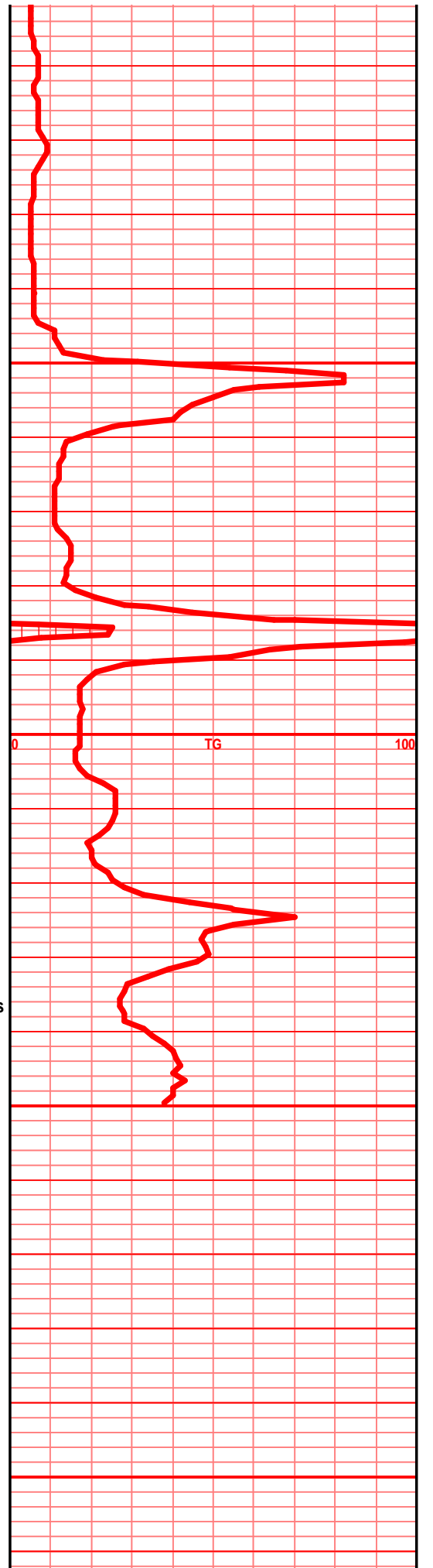
shl gry blk carb wxy grsy lst aa

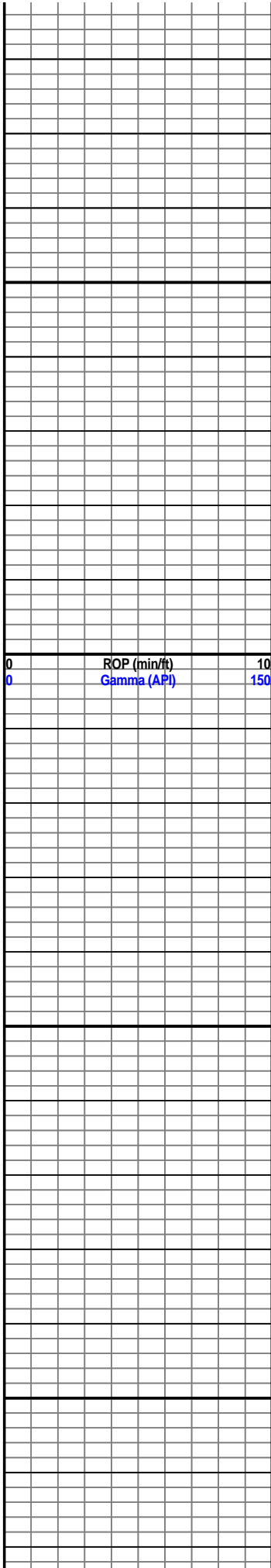
lst wht tan f xln gran sub chlky foss frags, calc xln fill

lst crm tan lt gry f xln blkly flky sub chky foss frags

shl gry blk semi carg, silty gritty

much, gry blk, blk shls, lst tan lrn f xln blkly dns hrd arg





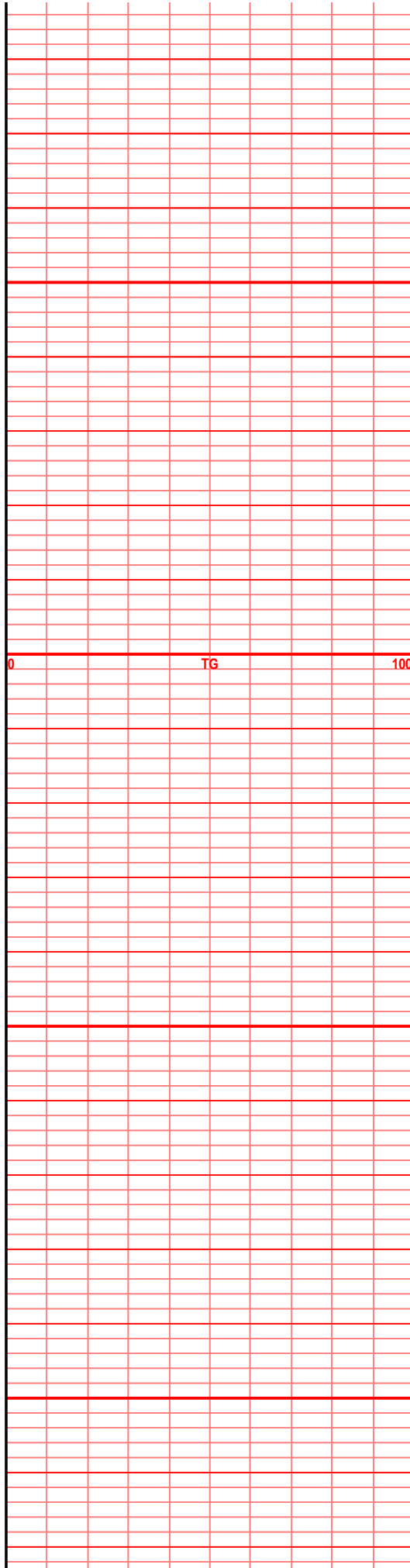
4550

4600

4650

4700

ROP (min/ft) 10  
Gamma (API) 150



TG 100


4750

00