

Woolsey Operating Company, LLC

Scale 1:600 (2"=100") Metric
Measured Depth Log

Well Name: Tucker B-4 H
Location: Section 11 - Township 34 South - Range 11 West
License Number: _____ Region: Barber County Ks
Spud Date: September 23, 2011 Drilling Completed:
Surface Coordinates: 210' FNL, 760'FWL or App NW NE NW NW
Schubach Field
Bottom Hole
Coordinates:
Ground Elevation (m): 1400' K.B. Elevation (m): 1409'
Logged Interval (m): 4065' To: Total Depth (m):
Formation: Kansas City ---> Mississippi
Type of Drilling Fluid:

Printed by WellSight Log Viewer from WellSight Systems 1-800-447-1534 www.WellSight.com

OPERATOR

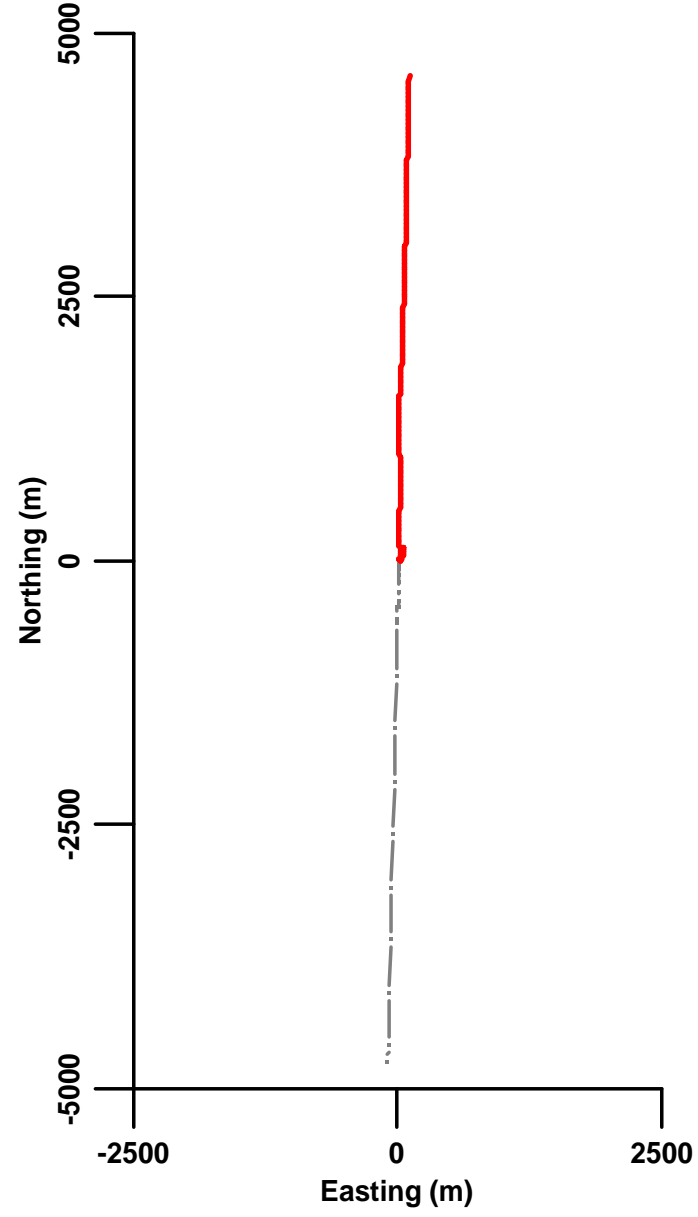
Company: Woolsey Operating Company, LLC
Address: 125 N. Market Suite 1000
Wichita, Kansas 67202

GEOLOGIST

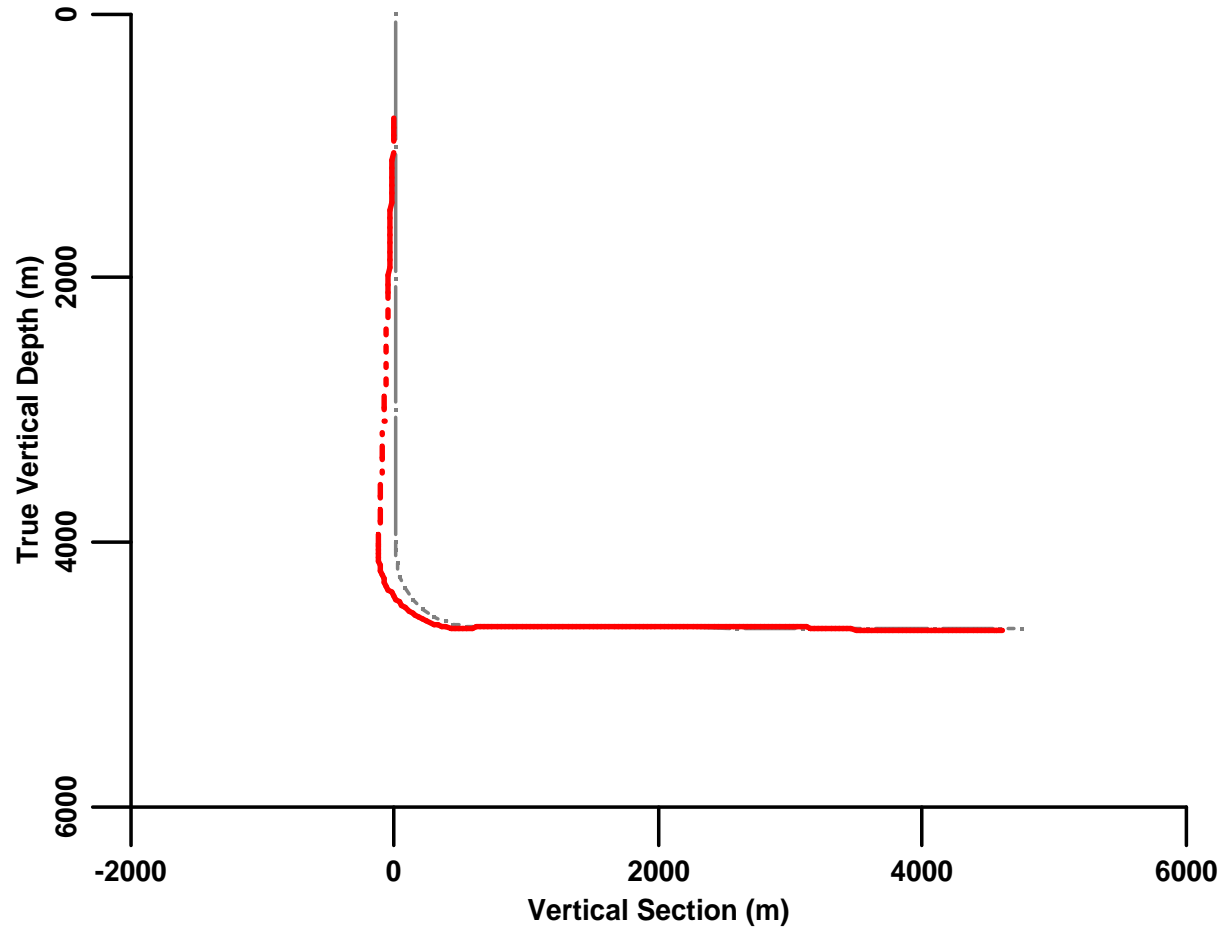
Name: Bill Klaver
Company: Woolsey Operating Company, LLC
Address: 125 N. Market Suite 1000
Wichita, Kansas 67202

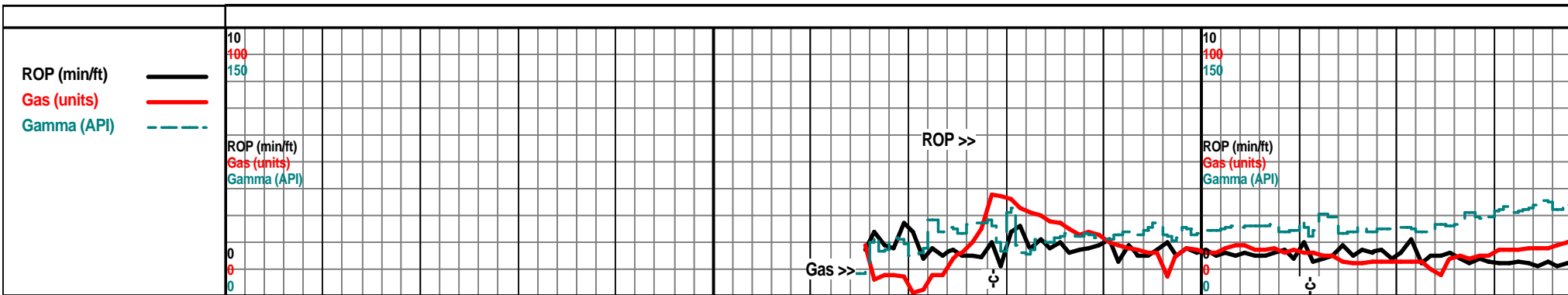
Comments

Plan



Elevation



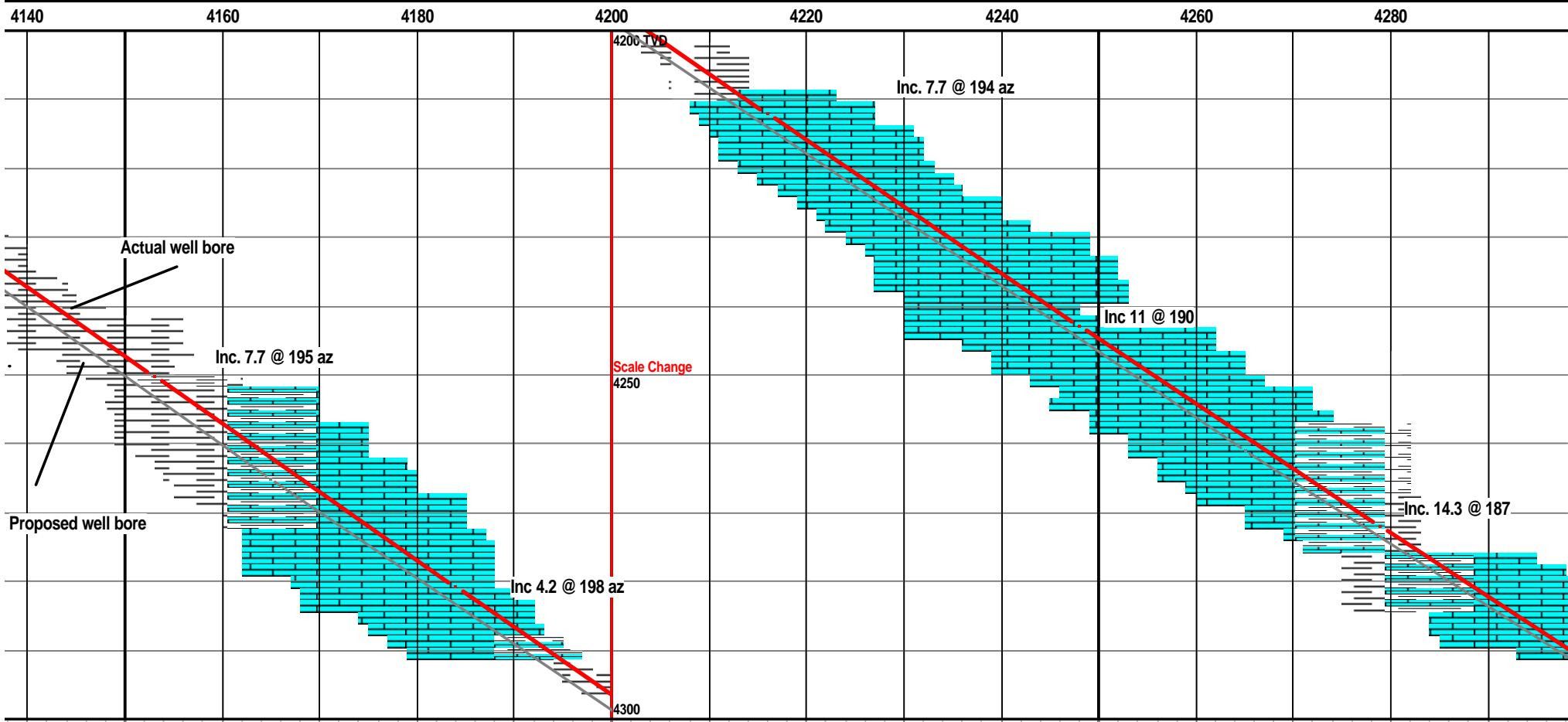
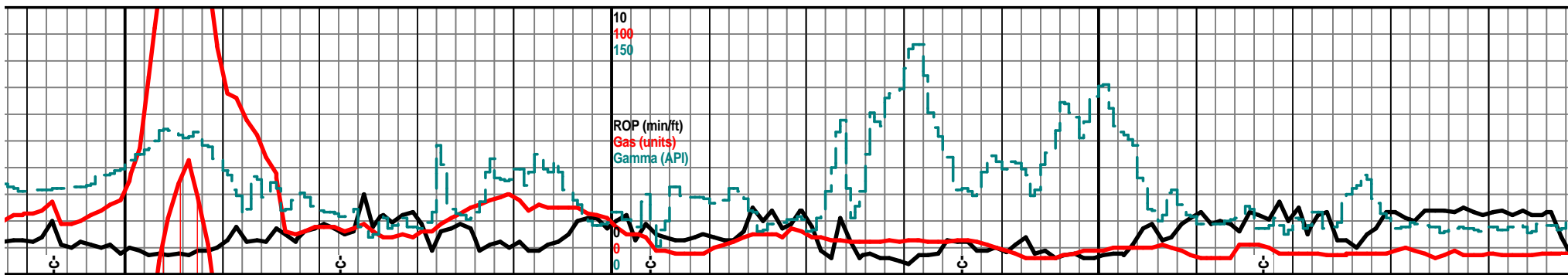


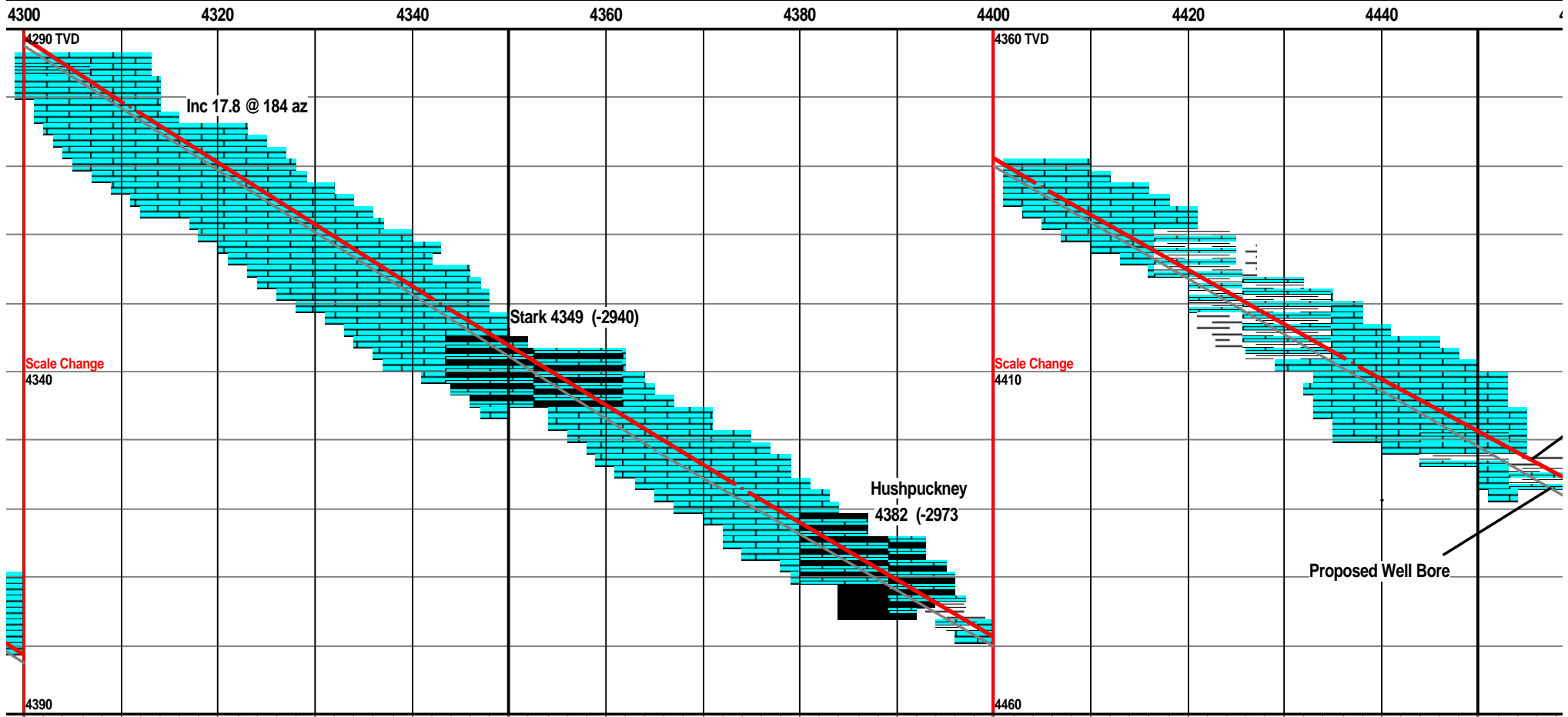
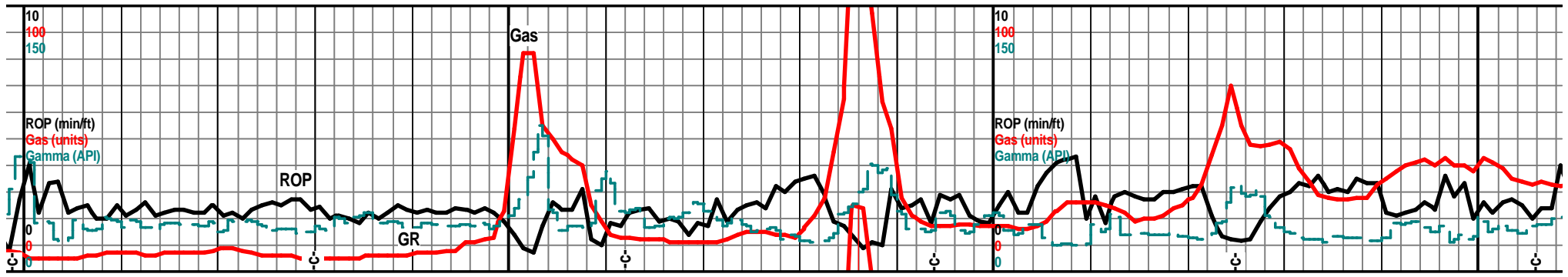
Oil Shows

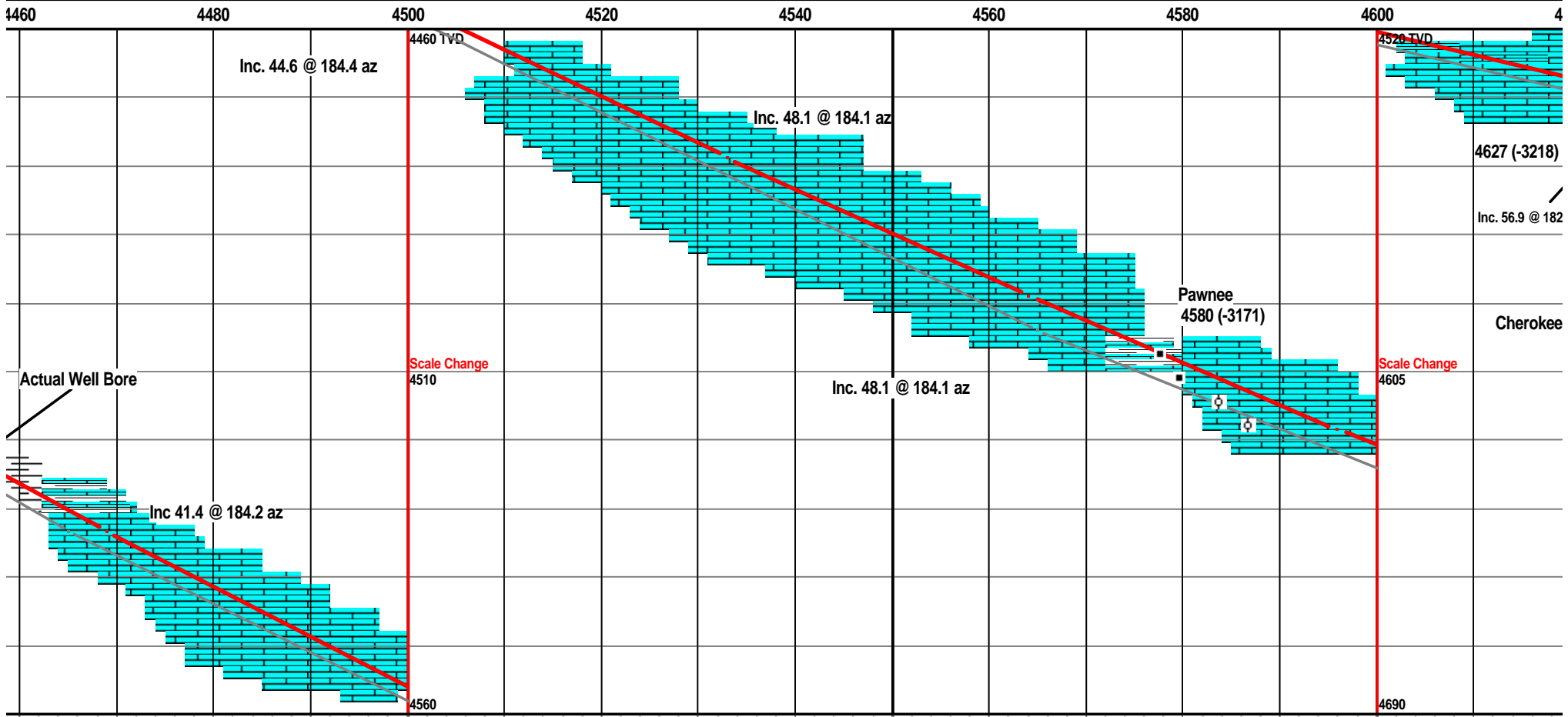
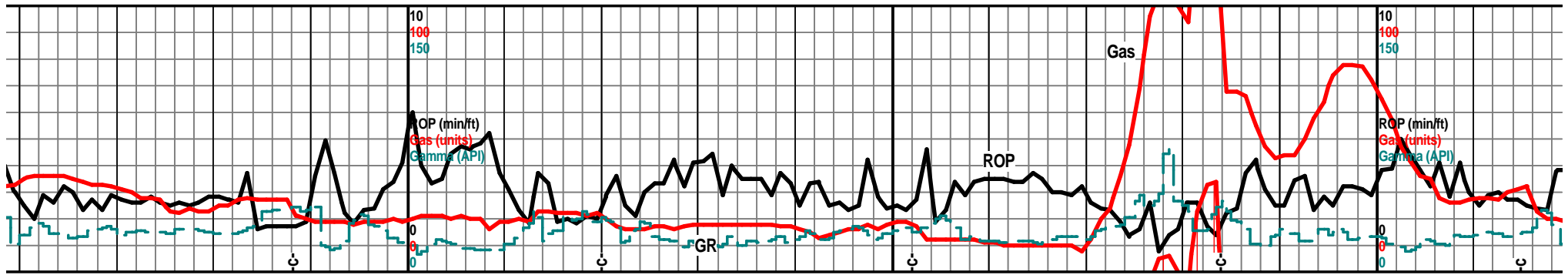
Depth 00 4020 4040 4060 4080 4100 4120

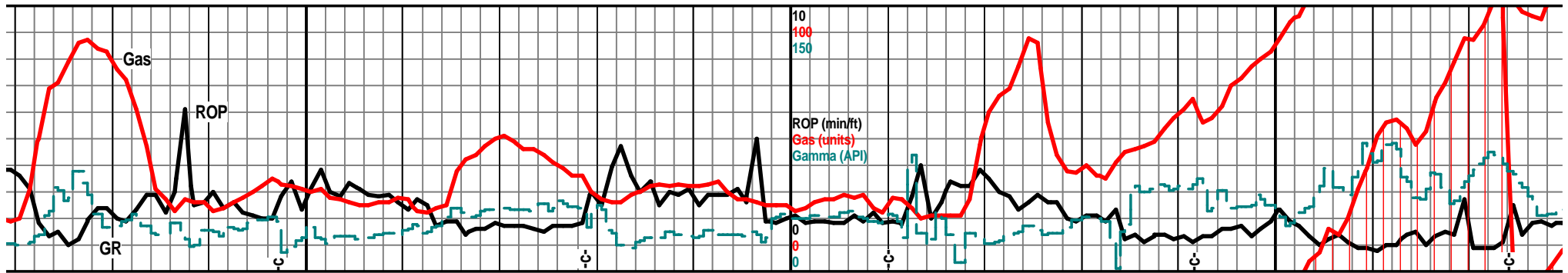


Porosity	24%
	18%
	12%
	6%
Porosity Type	

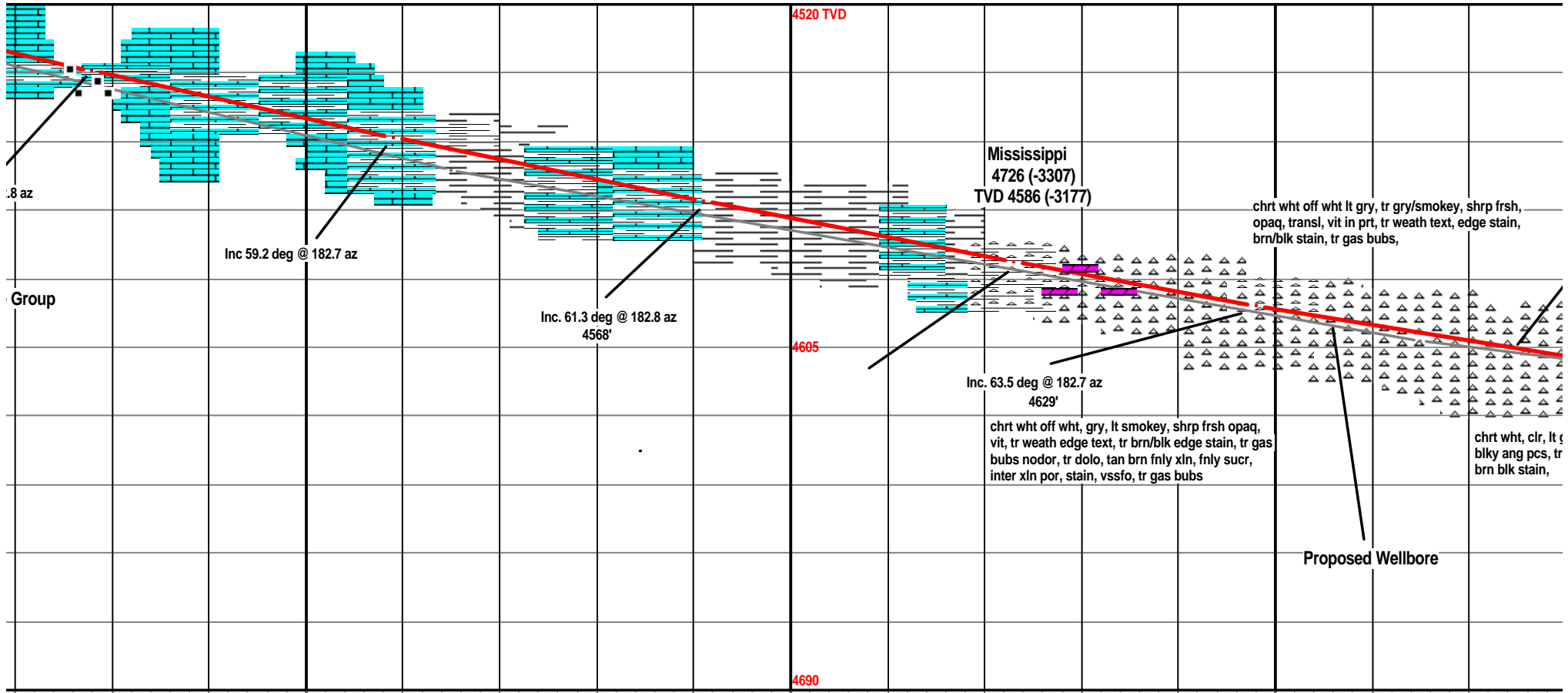


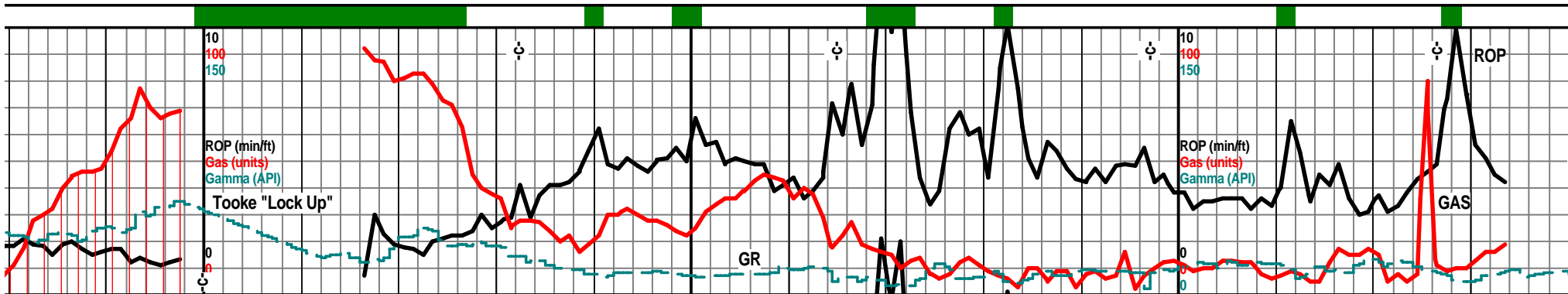




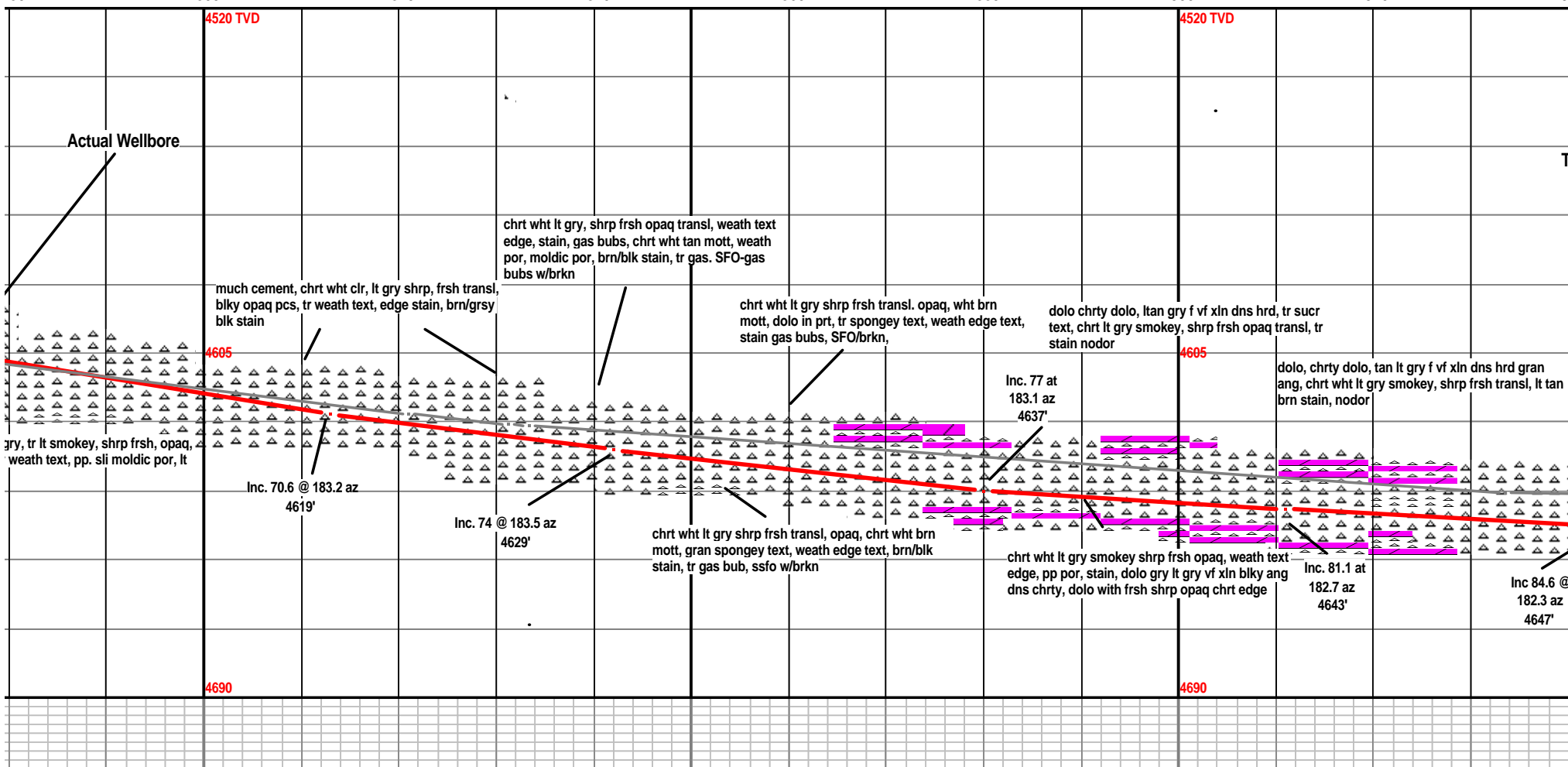


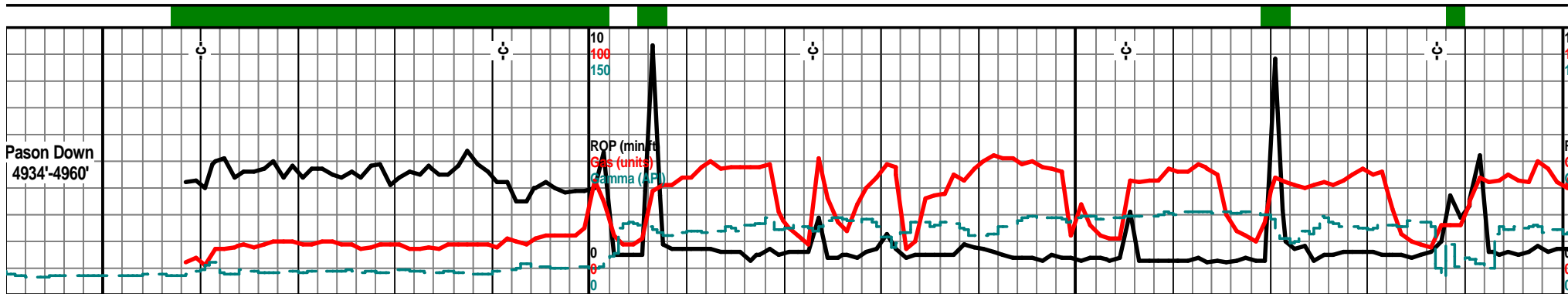
620 4640 4660 4680 4700 4720 4740 4760 4780





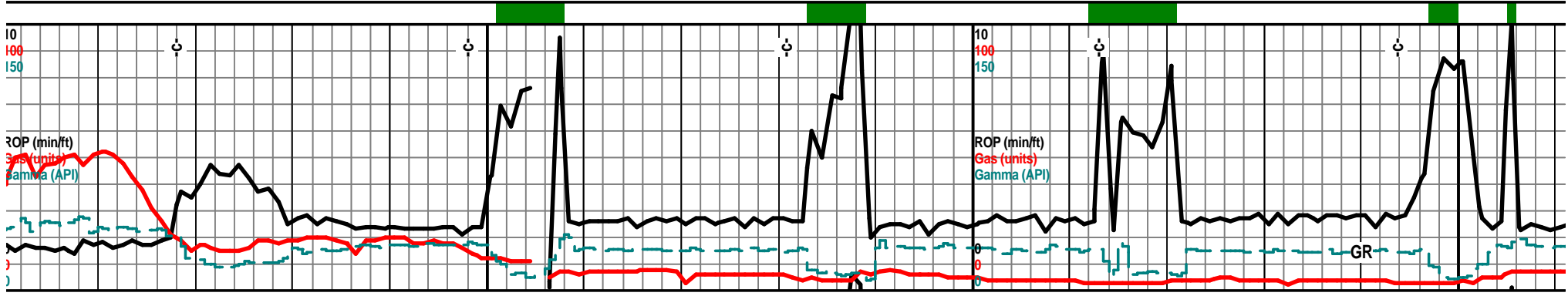
780 4800 4820 4840 4860 4880 4900 4920 49





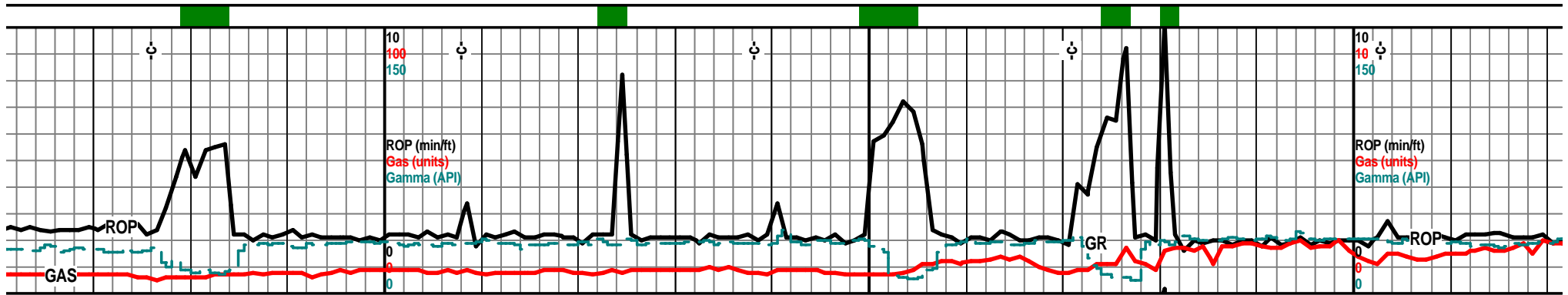
40 4960 4980 5000 5020 5040 5060 5080 510

	4960' at 7 am Sunday October 2, 2011		4520 TVD		samples becoming very fine				MTD 5070 TVD 4648 (-3239)
MTD 4943 VD 4643 (-3234)									
chrt wht lt gry shrp frsh opa, trans. dolo chrt, tan lt brn/tan f vf xln dns gran lt brn stain, frsh opa chrt w/tan lt brn dolo edge, stain tr gas bubs nodor			4605		dolo chrt dolo, dolo tan crm lt brn f vf xln blk ang gran, inter xln por, moldic por, tan brn stain, chrt inclu, chrt wht lt gry smokey shrp frsh opa, transl, tr w/dolo edges, tan stain, nodor				chrt wht lt gry shrp frsh opa, tr weath text edge, pp moldic por, stain, SFO w/brkn, tr gas, chrt dolo, tan crm f vf xln gran blk gran, inter xln por, chrt inclu, stain SSFO/brkn, tr gas
	Inc. 88.2 @ 182.7 az 4649'			Inc. 90.5 @ 183.2 az 4649'					Inc. 91.9 @ 183.8 az 4648'
	chrt wht lt gry tr smokey shrp frsh opa, transl, chrt dolo, gry tan f vf xln blk ang, gry lt gry chrt inclu, chrt w/weath text, stain, tr gas bubs, SSFO w/brkn			chrt lt gry lt smokey shrp frsh opa transl, w/dolo edge, dolo tan crm drk tan f vf xln gran tr suc text, chrt, chrt inclu, weath text por, inter xln por, moldic por, lt tan/brn stain, gas bubs, VSSFO w brkn		183.5 az Inc. 91.2 @			chrt wht lt tah gry shrp frsh opa w/dolo edge, tr weath text por, pp/moldic por, dolo tan crm f vf xln blk ang chrt, chrt inclu, tan brn stain, VSSFO w/brkn
	Sweep Hole								
			4690						



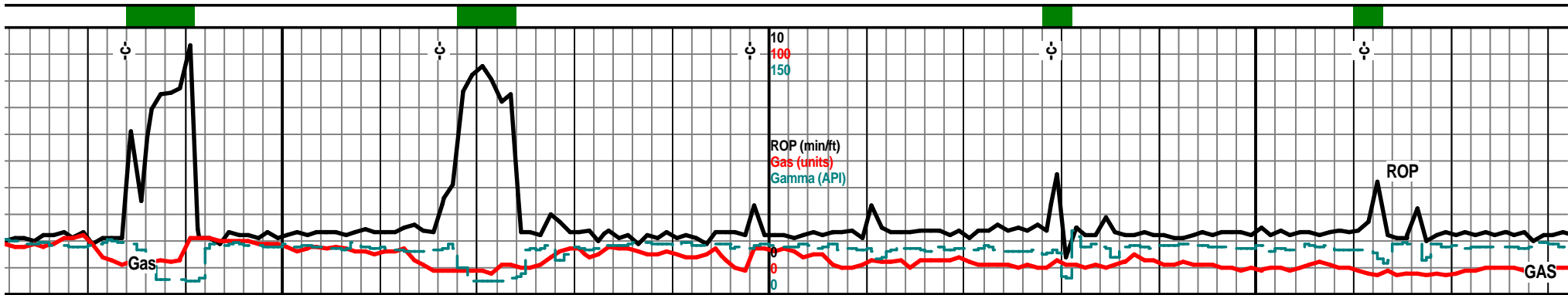
10 100 150 10 100 150 10 100 150 10 100 150 10 100 150

10	5120	5140	5160	5180	5200	5220	5240	5260
1520 TVD			5154' 5 pm Sunday October 2, 2011		4520 TVD		5246' 7am October 3, 2011	
	samples incr to vry fine		Bit Trip 5158'	MTD 5165 TVD 4645 (-3236)		Mud-Co. 5276' wt. 8.3 vis. 26		TVD
							chrt wht clr lt gry shrp frsh transl, vf xln gran blkly soft, tr lt stain, ch text edge, brn blk stain	
1685	incr chrt, wht lt gry, opa, shrp frsh transl, tr w/dolo edge, tr weath text edge, stain, ssfo/brkn, chrt dolo, tan crm dolo, f vf xln stain, chrtly inclu, shrp frsh opa, transl	chrt wht lt gry tan shrp frsh transl, blkly ang, chrtly dolo, f vf xln gran blkly tr suc text, chrt inclu, w/weath text por, pp moldic por, stain, nodor in any	dolo chrtly dolo, crm tan f vf xln gran blkly ang pcs, chrt inclu, chrt wht lt gry shrp frsh opa, transl, stain, tr gas bubs, VSSFO/brkn-couple of pcs, odor in cooked dry spl	dolo crm off wht tan f vf xln gran ang blkly pcs, tr suc text, chrtly in prt, chrt inclu, chrt wht lt gry shrp frsh blkly transl opa, vis brn/blk stain, nodor	dol tan crm off wht f vf xln gran soft, chrtly, chrt inclu, chrt wht lt tan lt gry shrp frsh opa transl, tr weath edge, tr trip tex por, brn/blk stain, nodor			
	Inc. 91.4 @ 183.2 az 4647'	Inc 91.6 @ 183.0 az 4646'	Inc 91.8 deg @ 182.1 az 4645'	Inc. 92.3 deg @ 181.3 az 4644'	Inc. 92.2 @ 180.9 az 4643'			Inc. 92.1 179.3 464'
	incr chrt, wht lt gry wht, shrp frsh, transl. opa, chrtly dolo, crm tan f vf xln dns blkly, lt gry wht off wht chrt inclu, stain, ssfo w/brkn,	chrt wht lt tan gry, shrp frsh opa blkly transl, chrtly dolo, tan crm f vf xln gran tr sli suc text, inter xln por, chrt w/weath edge stain, blk resid stain, lt brn stain nodor in any	chrt wht lt tan lt gry tr lt smokey, shrp frsh, blk ang pcs, dolo edge, dolo tan crm f vf xln gran, w/ chrt inclu, tr weath text edge, brn blk stain, VSSFO w/brkn in a few pcs, no odor	dolo tan off wht f vf xln gran soft blkly, inter xln por, chrtly, chrt inclu, chrt wht lt gry shrp frsh opa transl, brn/blk stain,	dolo tan off wht crm f vf xln gran soft, chrtly, chrt inclu, chrt wht lt gry shrp frsh opa transl, brn/blk stain, tr weath edge por, pp moldic por,			
1690					4690			



0 5280 5300 5320 5340 5360 5380 5400 5420

	sliding to drop angle and turn	4520 TVD		slide to drop angle and turn		4520 TVD	
MTD 5260) 4642 (-3233)		Red--Actual Wellbore Grey--Proposed Wellbore		MTD 5355 TVD 4639 (-3230)			
dolo crm tan f rt inclu w/weath							
dolo crm tan f vf xln gran tr sucr text, tr glau, chrt inclu, chrt wht lt gry shrp frsh opa, transl, tr weath text por, pp/moldic text, brn blk stain, nodor		dolo crm lt tan tan f vf xln gran blk soft chrt, tr stain, chrt inclu, chrt wht lt gry shrp frsh vit, transl, chrt with dolo edge, tr stain, nodor		dolo crm tan f vf xln gran blk soft, glau, chrt, chrt inclu, tr weath text, pp por, stain, chrt dolo, chrt wht lt gry transl, shrp frsh		dolo crm tan f vf xln gran soft blk ang, chrt inclu, tr stain, chrt wht lt gry msly wht vit transl, tr weath text edge pp por, blk stain nodor	dolo crm buff f vf xln blk agy flky pcs, chrt in prt chrt inclu, tr weath text edge, pp tr moldic por, tr stain, chrt wht clr lt gry opa shrp frsh, tr w/dolo edge, w/ weath edge blk stain nodor
3 @ az 2'	Inc. 91.7 @ 179.0 az 4641'	Inc 92 @ 178.7 az 4640'		Inc, 91.5 @ 178.6 az 4639'		Inc. 90.8 @ 178.2 az 4638'	Inc. 91.2 @ 177.9 az 4638'
dolo crm tan f vf lxn gran ang blk dns tr sucr text, tr glau, chrt, chrt inclu, chrt wht lt gry shrp frsh transl, w/tr weath edge text, brn blk stain, nodor		chrt wht lt gry shrp frsh, opa, transl, tr dolo edge, tr weath text edge, pp/moldic por, chrt wht lt gry shrp frsh opa, trans nodor		dolo tan crm off wht f vf xln gran blk, chrt in prt, chrt inclu, tr stain, chrt wht lt gry shrp frsh, tr weath text por, pp moldic por, tr stain nodor		dolo tan crm f vf xln gran, tr sucr test, chrt inclu, tr weath text edge on chrt stain, SSFO /brkn, chrt wht lt gry shrp frsh opa transl	dolo crm tan off wht f vf xln gran sli sucr text inclu w/weath text edge, stain, chrt wht shrp opa transl
		4690				4690	



5440 5460 5480 5500 5520 5540 5560 5580

much steel in very very fine sample mix

5440' sample, incr vis show, tan brn mott chrt, weath text por stain, brn stain

MTD 5481 TVD 4637 (-3228)

4520 TVD

Samples very fine

Red-Actual Wellbore Grey-Proposed Wellbore

chrt wht tan lt gry shrpt frsh, dolo tan crm f vf lxn gran tr suc text, incr crm brn mott chrt, weath text por, gran, tr spongy text, brn stain, blk stain, nodor

chrt wht lt gry shrp frsh opa q blk ang trans, w/dolo edge, weath text por, pp moldic por, incr tan brn mott dolo chrt, dolo w/chrt inclu, brn stain dull UV?

cht chrt dolo, tan crm with wht shrp frsh transl chrt inclu, tan brn mott in prt, pp/moldic por, stain

chrt, chrt dolo, tan crm, f vf xln chrt, chrt inclu, tan brn mott in color, stain, chrt wht lt gry shrp frsh opa q w/dolo edge, tan/brn stain, sho incr with depth

chrt wht off wht tr lt gry shrp frsh opa q transl, w/sli trip text, weath text edges, pp moldic por, brn blk stain, dolo edges, tan crm f vf xln blk ang gran tr stain

chrt clr lt g edge, pp n NSFO/gas, text por, st

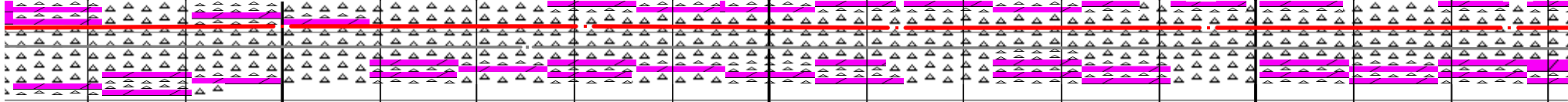
Inc 90.4 @ 177.3 az 4637'

Inc 89.4 @ 177.9 az 4637'

Inc. 89.5 @ 177.9 az 4637'

Inc. 90.1 @ 177.9 az 4637'

Inc. 90.7 @ 177.8 az 4638'



chrt dolo wht tl gry crm f vf xln gran, chrt in prt, tr frsh weath gran text, chrt inclu, tr chrt, chrt wht transl shrp frsh opa q

dolo, chrt dolo, crm tan, brn tan mott, f vf xln chrt, chrt inclu, weath text por, pp moldic por, brn stain, nodor, tr glau

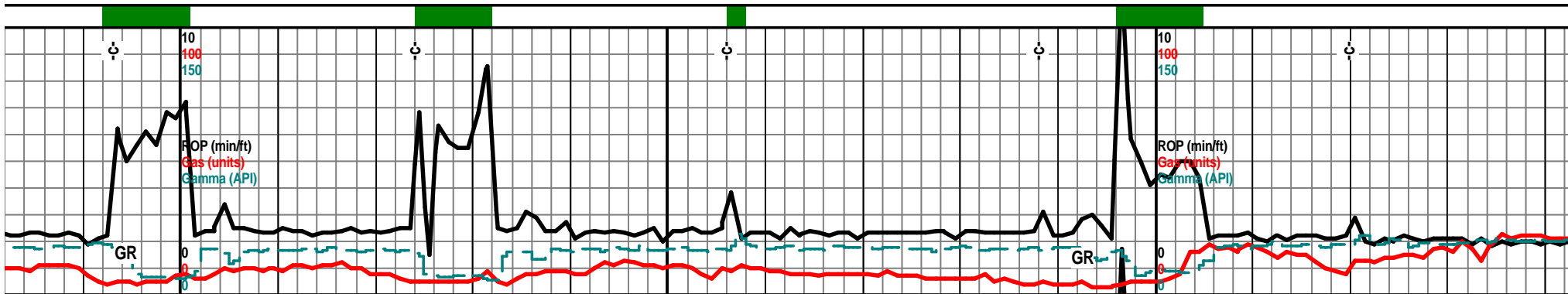
chrt, chrt dolo, dolo tan crm f vf xln gran sli suc text in prt, chrt inclu, wht lt gry shrp frsh with dolo edge, brn stain, nodor vis sho incr w/depth

chrt dolo, tan crm, tan brn mott in color, f vf xln gran chrt tan brn stain, chrt wht lt gry shrp frsh opa q w/dolo edge, weath text por, pp moldic por, sli stain

chrt wht off wht lt gry, shrp frsh opa q tr transl, weath sli trip weath text edge, pp moldic por, tan brn stain, dolo edge in prt, f vf xln gran tr stain

chrt wht lt g weath text, dolo, chrt in

4690



5600 5620 5640 5660 5680 5700 5720 5740

4520 TVD

MTD 5608
TVD 4637 (-3228)

5656' 7 am
Tuesday
October 4, 2011

Mud-Co. 5699'
wt. 8.3 vis. 25

MTD 5703
TVD 4639 (-3230)

ry shrp frsh opa, blk, w/weath sli trip edge, blk stain, dolo tan crm f vf xln w/ chrt inclu, w/weath sli trip edge, blk stain

chrt wlt lt gry shrp frsh opa, weath sli trip edge, blk stain, dolo tan crm f vf xln w/ chrt inclu, w/weath sli trip edge, blk stain

chrt wlt lt gry shrp frsh opa q/ weath sli trip edge text, pp moldic por, brn/blk stain chrt dolo tan crm f vf xln gran tr surc text, chrt inclu, weath sli trip text por aa blk stain nodor

chrt wlt clr lt gry shrp frsh, transl tr vit, tr weath sli trip edge, blk stain, dolo w/chrt inclu, wlt lt gry shrp frsh opa w/weath sli trip edge, stain nodor

chrt wlt lt gry shrp sli trip por, pp, mo gran, w/chrt inclu, stain

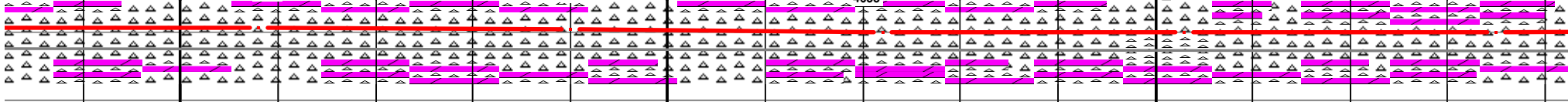
Inc. 89.5 @
178.5 az
4639'

Inc. 88.7 @
179.0 az
4638'

Inc. 89.3 @
179.1 az
4638'

Inc. 90.1 @
179.5 az
4639'

Inc. 90.3 @
179.9 az
4638'



ry shrp frsh opa transl, w/sli trip pp, moldic por, brn blk stain, chrt iclu aa, weath sli trip text stain

chrt wlt lt gry shrp frsh opa transl tr vit, some woti weath sli trip weath edge, sli stain, tr dolo edge, tan crm wlt f vf lxn gran tr sli surc text, tr glau, tr stain

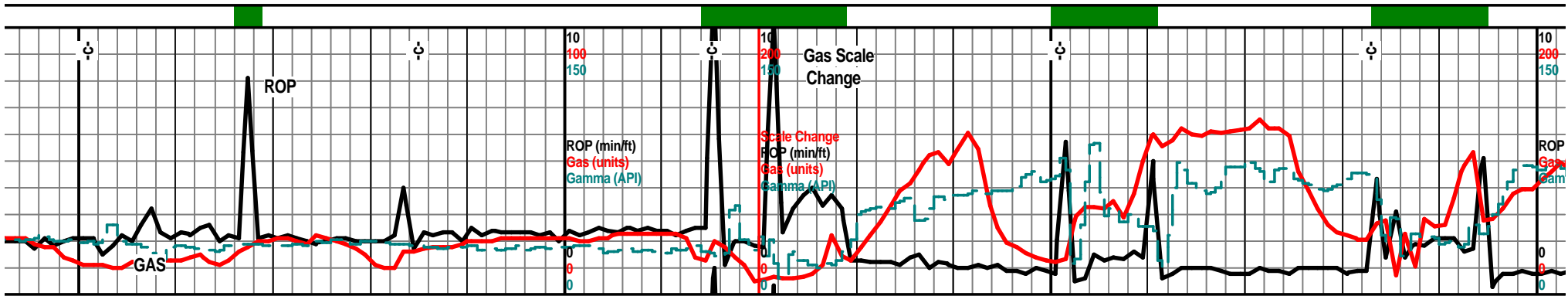
chrt wlt lt gry shrp frsh opa q/ weath sli trip edge, blk stain, pp moldic por, tr dolo crm tan w/ wlt lt gry shrp frsh opa chrt inclu, weath sli trip text edge stain

chrt wlt lt gry shrp frsh opa transl, w/weath sli trip edge, pp/moldic por, brn stain, nodor, dolo chrt dolo, chrt inclu, w/weath sli trip text, pp por, blk stain nodor

chrt wlt lt gry shrp frsh opa transl, tr w/weath sli trip text por, pp moldic por, dolo tan crm with chrt inclu, por text aa, pp moldic por, blk stain nodor

chrt wlt lt gry clr opa w/ off wlt, f vf xln gran blk weath sli trip por, pp por,

4690 4690



5760

5780

5800

5820

5840

5860

5880

5900

4520 TVD Bit Trip @ 5815'
Add 5' stab. sub at 5815'

MTD 5895
TVD 4634 (-3225)

frsh transl, blk vit, tr weath
ldic por, tr dolo wht tan f vf xln
wht lt gry shrp frsh opa, blk

chrt wht lt gry clr shrp frsh transl, opa, w/weath
sli trip text, pp moldic por, brn/blk stain, nodor,
dolo wht tan f vf xln, ang pcs, tr glau

chrt wht lt gry clr shrp frsh transl opa, tr weath
trip edge text, pp moldic por, brn blk stain, dolo
tan crm with weath chrt inclu, brn blk stain

chrt wht clr lt gry shrp frsh opa transl, with weath
trip text edge, pp moldic por, brn blk stain, tr gas
bubs,

chrt wht clr lt gry smokey, shrp frsh opa transl,
weath gran trip text, pp moldic por, blk stain
asphaltic grsy stain/SFO nodor, tr dolo tan crm f
vf lxn w/weath trip text chrt inclu

chrt
4blk
anc

Inc. 90.9 @
179.7 az
4638'

Inc. 91.6 @
179.0 az
4637'

Inc. 92.6 @
179.0 az
4636'

Inc. 92.7 @
180.2 az
4635'

Inc. 91.7 @
180.4 az
4634'

t transl, chrt dolo, tan
dns, hrd, chrt inclu,
blk stain nodor

chrt wht lt gry shrp frsh transl, opa, weath sli
edge, pp moldic por, brn blk edge stain, nodor, tr
gas?
chrt wht lt gry clr, opa transl, shrp frsh, tr dolo
with chrt inclu, shrp frsh opa w/weath sli trip
text, tr glau, tan brn tr blk stain, NSFO, nodor in
any

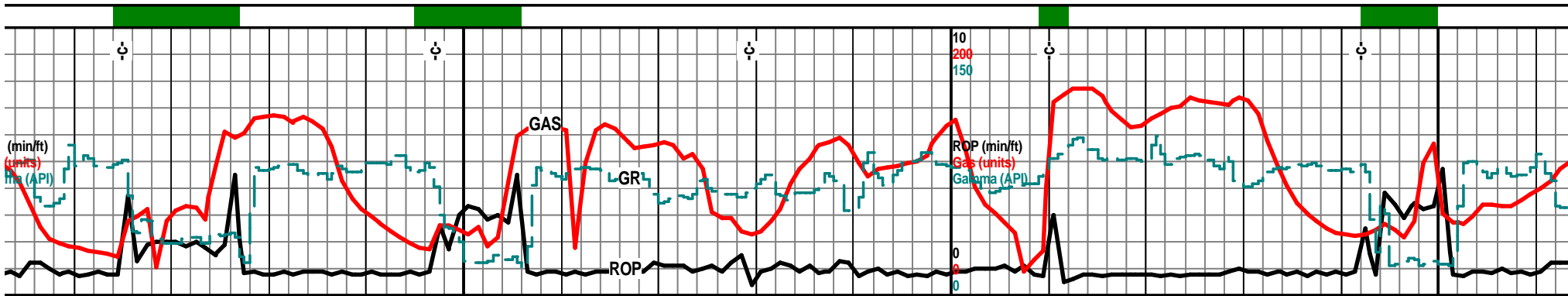
chrt wht lt gry smokey shrp frsh opa with weath
dolo trip text edge, pp moldic por, brn blk stain

chrt wht lt gry clr tr smodey shrp frsh opa with
weath trip text, pp moldic por, blk brn stain

c
ti
a
a

4690

4690

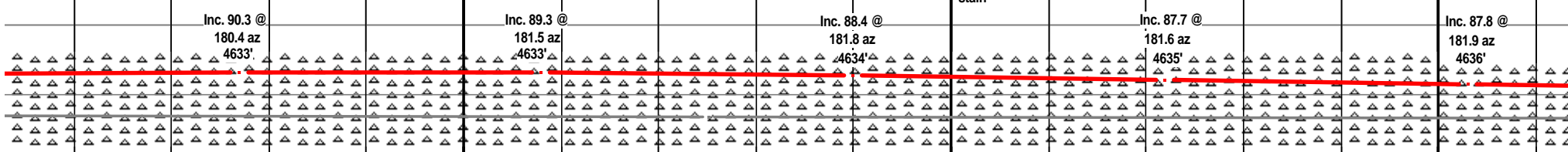


5920 5940 5960 5980 6000 6020 6040 6060

TVD 4520 TVD 6047' 7 am Wednesday October 5, 2011

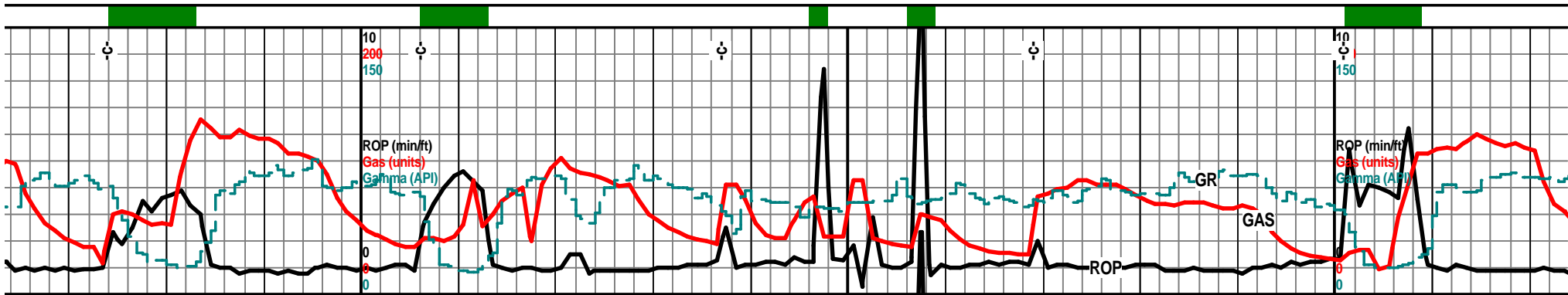
MTD 5990
TVD 4634 (-3225)

off wht lt gry clr smokey shrp frsh opa, w/ weath trip text edge, pp moldic por, grsy stain tr dolo tan crm with weathe chrt inclu sho aa, sli odor
 chrt clr wht lt gry shrp frsh opa trans, with weath trip text edge, pp moldic por, blk stain, frac por, sli odor? dolo wht lt gry f vf xln gran tr glau, chrt inclu aa
 chrt wht tan brn mott, weath semi trip text, spongy text, soft gran in prt, gas bubs, brn stain, blk asphaltic stain, chrt wht tan lt gry shrp frsh, w/weath trip text edge, stain
 chrt wht tan brn mott weath trip text, gran soft, spongy text in prt, pp/moldic por, brn blk stain chrt off wht smokey shrp frsh opa trans, with weath sli trip edge, pp moldic por, SSFO, brn/blk stain
 chrt wht lt gry shrp frsh opa trans, shrp shards, chrt tan crm brn mott, weath semi trip text, pp moldic por, tr spongy text, brn stain, blk grsy stain



hrt off wht lt gry clr, smokey shrp frsh opaq rans, w/weath trip text edge, pp moldic por, grsy asphaltic stain odor, tr dolo tan crm f vf xln blk yng dns with chrt inclu w/sho text aa, sli odor
 chrt wht lt gry smokey clear, shrp frsh opaq transl, dolo tan wht f vf xln blk yng ang with chrt inclu, wht clr lt gry shrp frsh with weath trip text edge, stain blk grsy stain
 chrt wht brn mott, weath gran trip text with frsh shrp gry frsh opaq shards, brn stain blk SFO, sli odor
 chrt wht tan brn mott, weath gran trip text, tr spongy text, pp/moldic por, brn stain, blk asphaltic stain, chrt wht lt gry smokey shrp frsh opaq with weath trip text edge, stain tr SFO, filmy on water
 chrt wht clr lt gry smokey, shrp frsh ang blk yng transl, chrt shards, chrt tan lt brn mott weath sli trip text, pp/moldic por, brn stain, blk asphaltic stain
 cl tr bi di

4690



6080

6100

6120

6140

6160

6180

6200

6220

4520 TVD

4520 TVD

MTD 6085
TVD 4637 (-3228)

Mud-Co. 6157'
vis. 26 wt. 8.3

MTD 6212
TVD 4638 (-3229)

chrt off wht clr lt gry, smokey, shrp frsh opa
transl, chrt shards, chrt gry smokey aa with sli
trip weath edge, pp moldic por, blk stain,

4605 chrt off wht lt gry smokey shrp frsh opa transl,
weath sli trip text edge, tr tan brn mott, gran trip
text, brn stain, blk stain, filmy SFO on spl water

chrt clr off wht, lt gry tr lt smokey, shrp frsh, semi
trans, tr foss frag incu, trip weath text, spotted
med brn some blk stain, pp moldic por

chrt clr off wht lt gry smokey, shrp frsh blk, chrt
shards, semi trans, tr glau, weath text, semi trip
weath text, spotted med brn, some blk stain, pp
moldic por. filmy RBSFO on sample water

4610 chrt with lt gry smokey shrp frsh blkly :
transl, semi trip weath text, spotted m
stain, pp moldic por, nodor, grsy stair

Inc. 88.5 @
182.9 az
4637'

Inc. 89.3 @
182.9 az
4638'

Inc. 89.3 @
183.6 az
4638'

Inc. 89.6 @
183.5 az
4638'

Inc. 90.7 @
183.4 az
4638'

hrt off wht lt gry tr smmokey shrp frsh opa, vit
ansl, with semi trip weath text, pp moldic por,
rn stain, blk asphaltic stain, tr RBSFO, odor in
rys

chrt off wht lt gry smokey shrp frsh opa transl,
with weath semi trip text edges, pp por, stain, blk
stain, mstly frsh

chrt lt gry smokey shrp frsh opa transl, with
weath sli trip text, pp, moldic por, tan brn stain tr
blk asphaltic stain, nodor, tr wht flky lst f xln sub
chiky, with chrt inclu aa

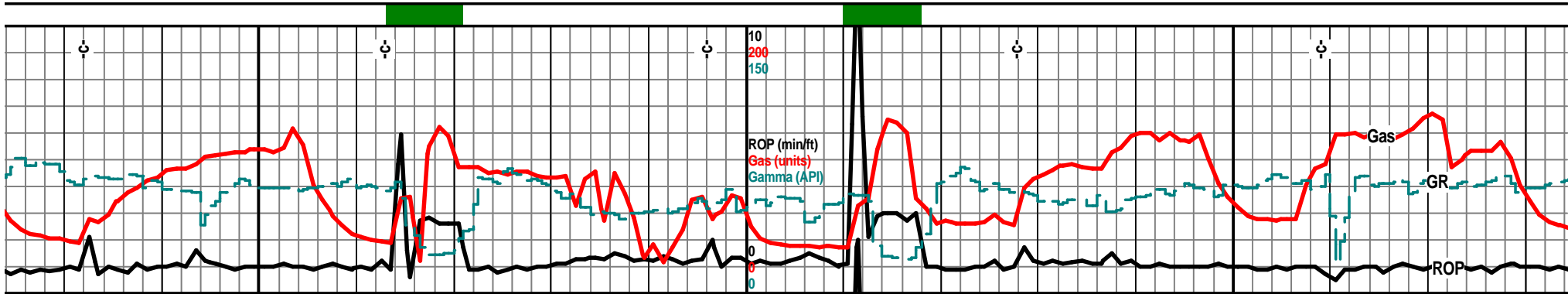
chrt clr off wht lt gry tr smokey, shrp frsh blk
opa, semi trans, transl, tr glau, weath edge text,
sli trip to trip text, pp moldic por, spotted brn blk
stain, rainbow film on spl water

chrt wht off wht lt gry shrp frsh opa blkly shards,
weath semi trip text, pp moldic por, spotted brn
blk stain, nodor, filmy sfo on spl water

chrt
chrt
text
tr ga

4690

4690



6240

6260

6280

6300

6320

6340

6360

6380

4520 TVD

6 pm 6355'
Wednesday
October 5, 2011

MTD 6307
TVD 4637 (-3228)

semi transp,
ed brn blk

chrt lt wht clr lt gry lt smokey, shrp frsh opa
semi transp chert shards, tr foss inclu, chrt aa
with semi triplitec weath text, pp moldic por,
spotted brn/blk stain, filmy RBSFO, gas bubs gd
UV

Inc. 91.3 @
184.1 az

chrt lt tan lt gry, shrp frsh opa, foss frag inclu,
semi transp, tan brn mott, weath trip text, spotted
to fair/gd stain, brn stain, tr blk gas bubs, filmy
SFO on sampl water

Inc. 91.3 @
183.5 az
4637'

chrt off wht lt gry clr shards, frsh opa, transp in
most, tr foss frag inclu, tr glau, weath trip text,
pp.moldic por, spotted brn blk stain, tiny oil
droplets on smpl water, nodor

Inc. 90.4 @
183.5 az
4637'

chrt off wht lt tan lt gry, clr chrt shards, frsh opa
transl, transp, tr glau, tr foss frags, weath trip text
por, pp/moldic por, spotted/fair brn blk stain, tr
gas bub nodor

Inc. 90.2 @
183.4 az
4637'

chrt clr lt gry transl, transp frsh opa sha
shards, tr foss frag inclu, tr glau, spotted
stain w/weath sub trip edges, nodor

Inc. 90.3 @
183.4 az
4637'

lt gry smokey, clr shrp frsh opa semi transp chrt off wht lt gry tr lt smokey, shrp frsh opa
shards, chrt aa with weath semi trip weath blk, transp in prt, with tan brn mott trip text
edge, spotted brn blk stain, nodor, filmy RBSFO weath edge, spotted to fair stain, brn blk stain,
is filmy SFO on water

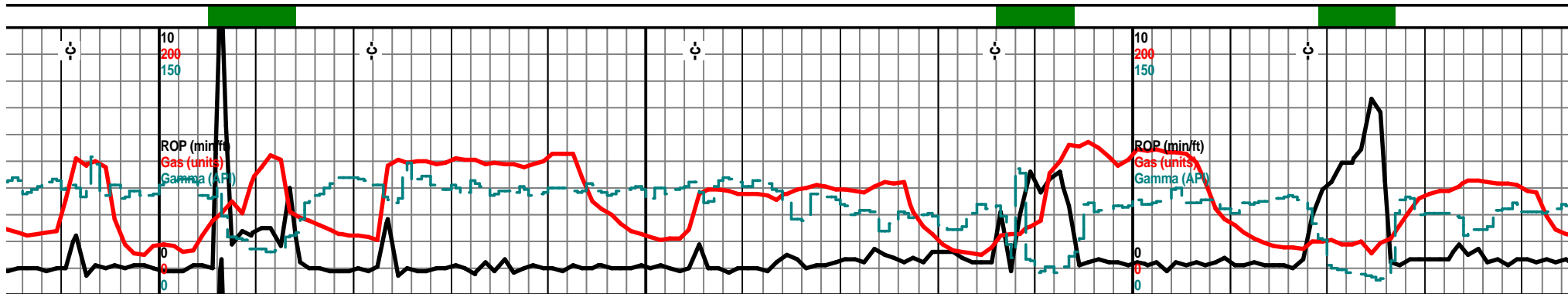
chrt lt gry clr shrp frsh blk transp in prt, chrt aa
with tan brn tr blk mott, mod weath trip text,
spotted brn blk stain, vis pp/weath moldic por

chrt off wht, lt gry shrp frsh opa, transl, mstly
transp, tr foss frags inclu, tr glau, spotted brn blk
stain w/weath trip edge, SFO droplets on spl
water

chrt off wht lt gry transl, transp, frsh shrp chrt
shards w/gran weath trip text por, pp/moldic por,
spotted brn stain nodor, ssfo droplets on spl
water

chrt lt wt
spotted i

4690



Depth (ft)	6400	6420	6440	6460	6480	6500	6520	6540
4520 TVD	Strong odor on pits						Samples very fine!	
MTD 6403 TVD 4636 (-3227)							MTD 6498 TVD 4636 (-3227)	
rop brn/blk	chrt lt gry clr, transl, mstly transp frsh opaqt chrt shards, w/spotted brn blk stain, weath trip por, pp/moldic por, tr asphaltic stain, tr droplets of spl wtr						chrt lt gry shrp frsh transl, transp, opaqt shards, with tan/brn mott weath trip text edge, spotted brn blk stain, pp moldic por, filmy sfo on spl wtr. nodor	
	Inc. 90.4 @ 182.7 az 4636'						Inc. 90.4 @ 182.5 az 4636'	
	chrt lt gry off wht shrp frsh opaqt mstly transp, gry tan/brn mott, weath sli trip edge, stain spotted tan brn stain, small oil droplets on spl str						chrt clr lt gry frsh shrp opaqt shards, transl, mstly transp, with tan brn mott weath trip edge/por, pp moldic por, spotted to fair brn blk stain nodor oil droplets of spl wtr	
	Inc. 90.3 @ 183.1 az 4636'						Inc. 90.4 @ 182.4 az 4636'	
	chrt clr lt gry shrp opaqt chrt shards, transl, frsh w.gry tan brn mott, weath trip text por, pp moldic por, spotted/fair brn blk stain, nodor, tiny oil drops/wtr						chrt clr lt gry frsh shrp transl, opaqt tr glau, much spotted brn stain, with weath trip por, pp/moldic por, tr dolo wht lt green f xln glau flky chlky	
	chrt off wht lt gry clr shrp transl, transp opaqt shards, foss frag inclu, tr glau, spotted tan brn blk stain w weath sli trip text, nodor,						chrt off wht clr lt gry shrp frsh opaqt blkly spotted tan brn mott, with weath trip text, moldic por, scattered spotted brn blk stain SFO	
4690							4690	

trace dolo, wht lt green tint, f v f xln gran flky, calc, chlky, glau, chrtly inclu

4605

rop
|brn/blk

chrt off wt
pcs, tan t
sli trip po
stain

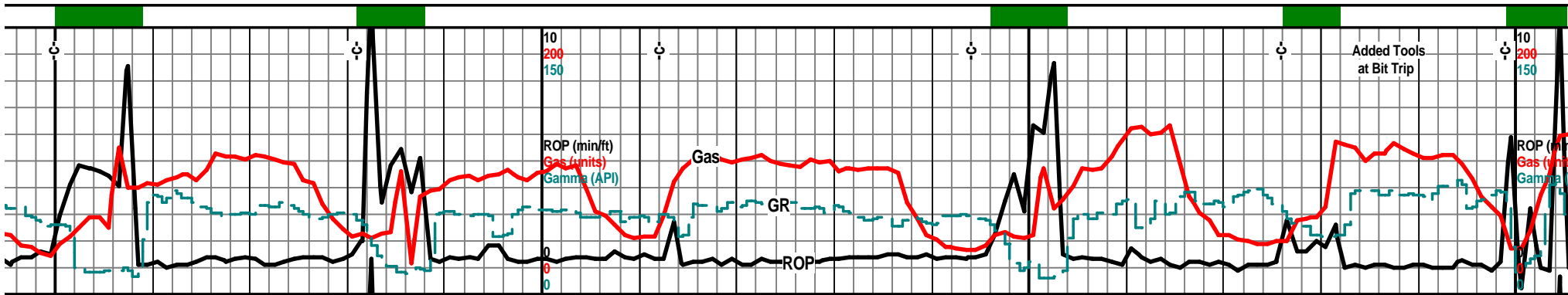
at lt gry frsh shrp opaqt transp chrt shard,
brn blk stain with weath sub trip text,

chrt off wht lt gry clr shrp transl, transp opaqt
shards, foss frag inclu, tr glau, spotted tan brn blk
stain w weath sli trip text, nodor,

chrt clr lt gry shrp opaqt chrt shards, transl, frsh
w.gry tan brn mott, weath trip text por, pp moldic
por, spotted/fair brn blk stain, nodor, tiny oil
drops/wtr

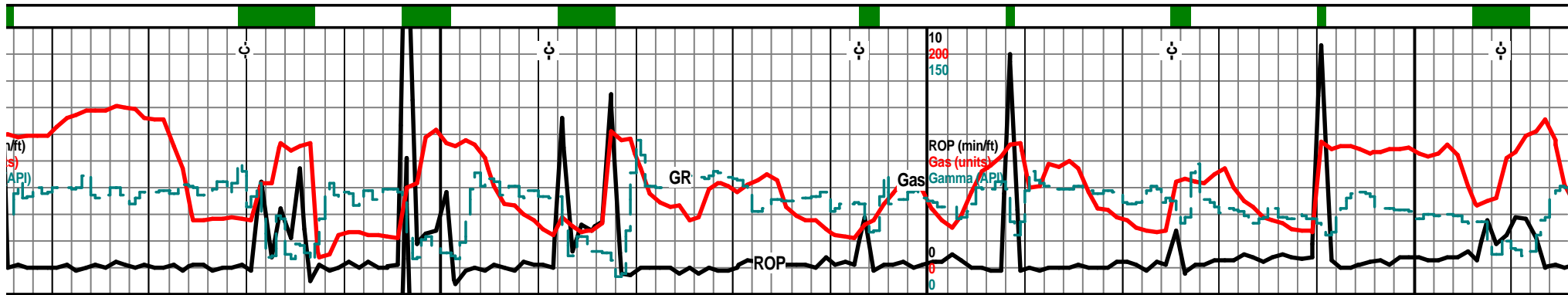
chrt clr lt gry frsh shrp transl, opaqt tr glau, much
spotted brn stain, with weath trip por, pp/moldic
por, tr dolo wht lt green f xln glau flky chlky

chrt off wht clr lt gry shrp frsh opaqt blkly
spotted tan brn mott, with weath trip text,
moldic por, scattered spotted brn blk stain
SFO



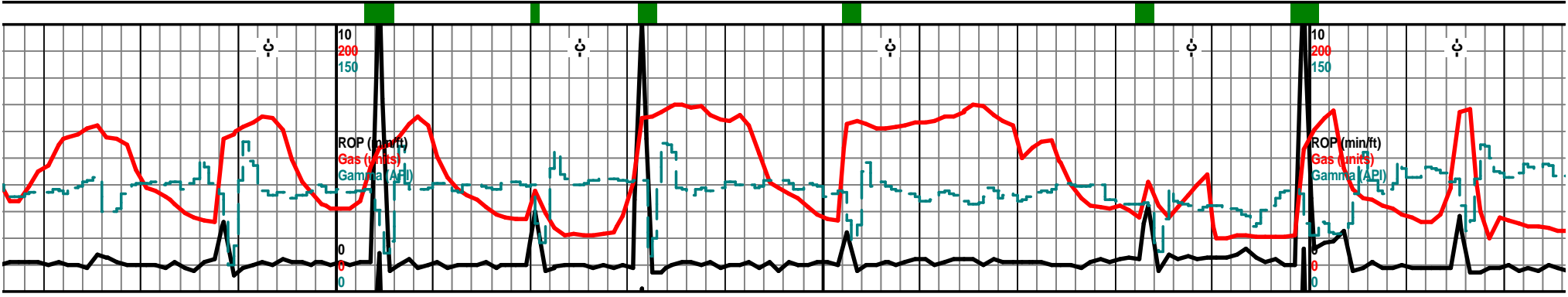
6560 6580 6600 6620 6640 6660 6680 6700

			4520 TVD	Samples pretty fine!		7 am 6676' Thursday October 6, 2011		4520 TVD
		MTD 6593 TVD 4635 (-3226)				Tool Trip 6676' Down hole motor spools up		M TVD
	tr dolo wht lt green f vf xln blkly flky, tr calc, tr chlky, chrty, glau in prt, 6570' and 6580' spls							
lt th gry clr, shrp, frsh, blkly, transl, opaq rn mott edge stain, tan brn mott weath r pp moldic por, spotted tan brn blk	chrt clr lt tan lt gry, shrp, frsh, opaq, transl shards/pcs, mottled brn blk weath trip text por, pp moldic por, spotted/fair tan brn/blk stain nodor			chrt off wth tan lt gry, shrp frsh, transl, opaq, tr tan brn mottled with tan brn spotted stain, weath trip text, pp/moldic por, tan brn stain, tr asphaltic, filmy SFO on spl water, odor on pits		cht lt tan off wht tr lt gry, shrp, frsh, opaq, transl, transp in prt, blkly shards, tan brn mott weath trip text, pp moldic por, tan brn stain, nodor		chr off wht lt gry clr, shrp, frsh, opaq, l transpl, transl, weath trip text edge, tan edge, pp moldic por, spotted/fair tan b
Inc. 90.0 @ 181.6 az 4635'	Inc. 90.2 @ 180.8 az 4635'		Inc. 90.5 @ 180.9 az 4635'		Inc. 89.9 @ 181.1 az 4636'		Inc. 87.7 @ 180.8 az	
shards, pp n, grsy	chr lt tan lt gry clr, opaq, transl, blkly, frsh, shards pcs, mottled brn blk weath trip pcs, pp moldic por, spotted/fair brn blk stain, filmy SFO on spl wtr	chrt clt lt gry shrp frsh, opaq, blkly ang, pcs, tan brn mott semi trip weath text, spotted/fair tan brn stain, pp moldic por, nodor, RBSFO on spl wtr, oil droplets		chrt lt tan lt gry clr, shrp, frsh, opaq, transp in prt, tan brn mottled weath trip text por, pp/ moldic por, spotted to fair tan brn stain, filmy SFO on spl water		cht clr lt tan lt gry shrp, frsh, blkly opaq, transp in prt, tan brn mottled stain, vis weath trip edge por, pp/moldic por, spotted/fair brn blk stain		chrt lt gry clr, shrp frsh transp in prt, with weat brn stain, pp/moldic po
		4690						4690



6720 6740 6760 6780 6800 6820 6840 6860

						4520 TVD				
ITD 6714 4637 (-3228)						MTD 6810 TVD 4838 (-3229)				
blky n mottled rn stain	chrt lt gry clr transl, semi transp blky ang frsh opaq, tr foss frags, tr lst/dolo edge, f xln flky chiky, spotted brn blk stain, pp/moldic por		chrt clr lt gry shrp frsh blky opaq transl, semi transp, weath trip text edges, spotted brn stain, pp moldic por, pyritic in prt, tr foss frags, glau			chrt clr lt gry shrp frsh blky ang pcs, semi transp, transl in prt, tan brn mottled weath trip text por, pp/moldic por, spotted/fair brn stain		chrt clr lt gry, semi transp, shrp, frsh, blky ang pcs, opaq, weath sli trip text, pp moldic por, spotted tan drk brn stain, tr foss frags, tr wht lt green flky calc dolo		chrt clr lt gry shrp f semi trip edge, tan spotted tan brn sta water
Inc. 87.2 @ 180.5 az 4637'		Inc. 88.6 @ 181.6 az 4638'		Inc. 90.5 @ 182.1 4638'		Inc. 90.7 @ 182.1 az 4638'		Inc. 91.1 @ 182.1 az 4638'		
blky ang opaq, transl, h sli trip text edge, spotted ir	chrt lt gry clr, blky ang pcs, shrp frsh opaq transl, semi transp in prt, weath tan brn mottled trip test, spotted tan brn tr blk stain, pp moldic por,		chrt clr off wht lt gry shrp frsh opaq blky ang pcs, weath semi trip text, pp moldic por, spotted/fair/even tan brn stain		chrt clr lt gry shrp frsh opaq pcs, semi transp, weath trip text por, pp moldic por, spotted/fair tan brn stain		chrt clr lt gry shrp frsh opaq transl, semi transp, weath sli trip text, spotted tan brn stain, pp moldic por, lst, calc dolo wht f xln flky chiky glau		chrt clr lt transl, tr pp moldi wht lt gr	
						4690				



6880 6900 6920 6940 6960 6980 7000 7020

4520 TVD
 7am 6940'
 Friday
 October 7, 2011
 4520 TVD

MTD 6905
 TVD 4637 (-3228)
 MTD 6999
 TVD 4637 (-3228)

frsh opaq, transl, with weath
 brn mottled, pp moldic por,
 in, nodor, filmy SFO on spl

chrt clr lt gry tr wht, glau, shrp, frsh, opaq, blkly,
 mstly transp, transl in most, tan brn weath sli trip
 edge, spotted/fair tan brn stain, tr gas, sli odor?

chrt, clr lt gry, tr wht, shrp frsh, opaq, mstly
 transp, tr transl, lt tan brn weath sli trip text, pp
 moldic por, spotted tan brn stain, filmy SFO on spl
 water, 3-4 pcs wht lt green calc dolo, flky chky f
 xln glau

chrt lt gry clr, tr wht, shrp frsh opaq transp
 shards, tr glau, tr foss frags inclu, tan brn weath
 trip por, pp moldic por, spotted tan brn stain,
 filmy RBSFO/wtr

chrt clr lt gry shrp frsh opaq, transp in most
 tan brn mottled weath trip text, pp/moldic por
 spotted tan brn some blk stain

Inc. 90.1 @
 181.7 az
 4638'

Inc. 90.1 @
 181.6 az
 4638'

Inc. 90.0 @
 181.5 az
 4637'

Inc. 90.3 @
 181.7 az
 4637'

Inc. 90.0 @
 181.5 az
 4637'

lt gry, tr wht, shrp, frsh, blkly, ang, opaq,
 ansp in prt, weath sli trip gran edge por,
 ic por, spotted brn blk stain, tr calc dolo,
 een flky chky glau

chrt lt gry clr, tr wht, glau, shrp, frsh, opaq, blkly
 shards, msly transp, tr transl, lt tan brn weath sli
 trip edge, spotted tan brn stain

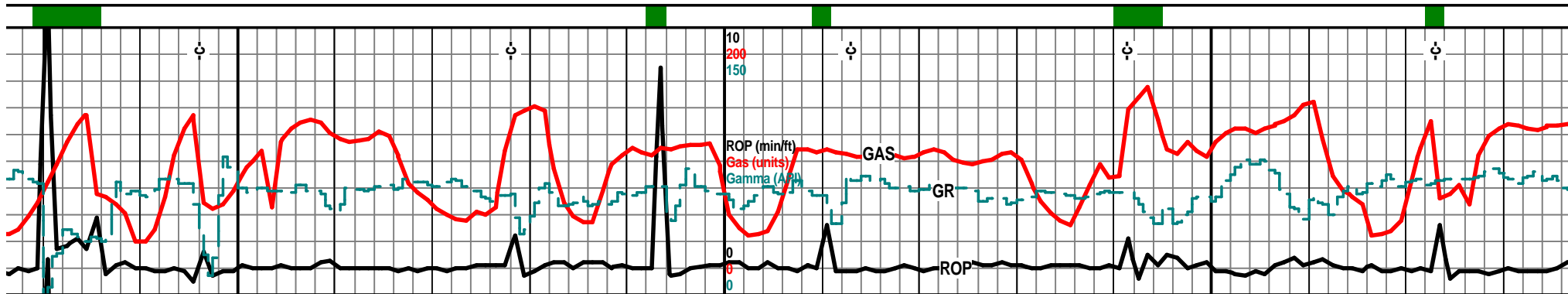
chrt lt gry off wht clr, tr wht, glau shrp frsh, opaq,
 blkly ang pcs, mstly transp, tan brn mottled weath
 sli trip por, pp moldic por, spotted/fair tan brn
 stain

chrt clr lt gry tr wht shrp, frsh, opaq, mstly transp,
 blkly ang pcs, transl in prt, tan brn mottled weath
 sli trip por/text, pp moldic por, spotted tan brn
 stain

chrt clr lt g
 glau, tan lt
 moldic por
 pcs wht lt

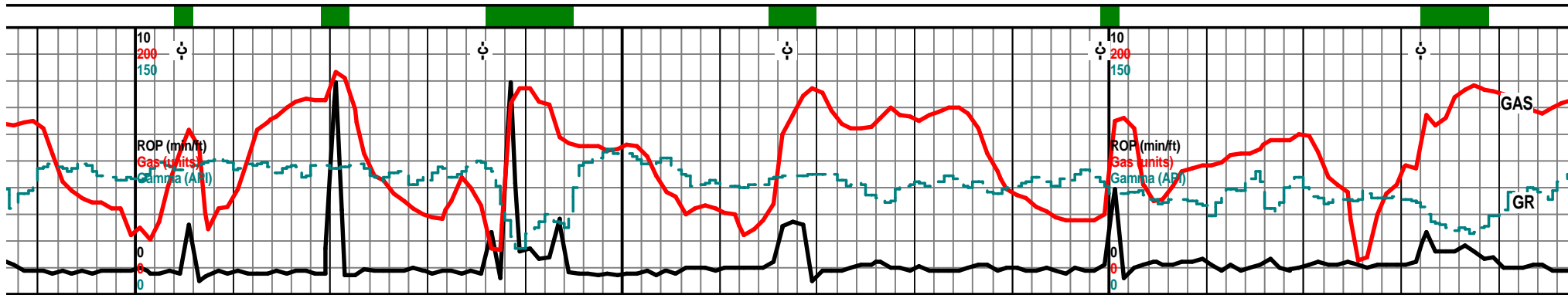
4690

4690

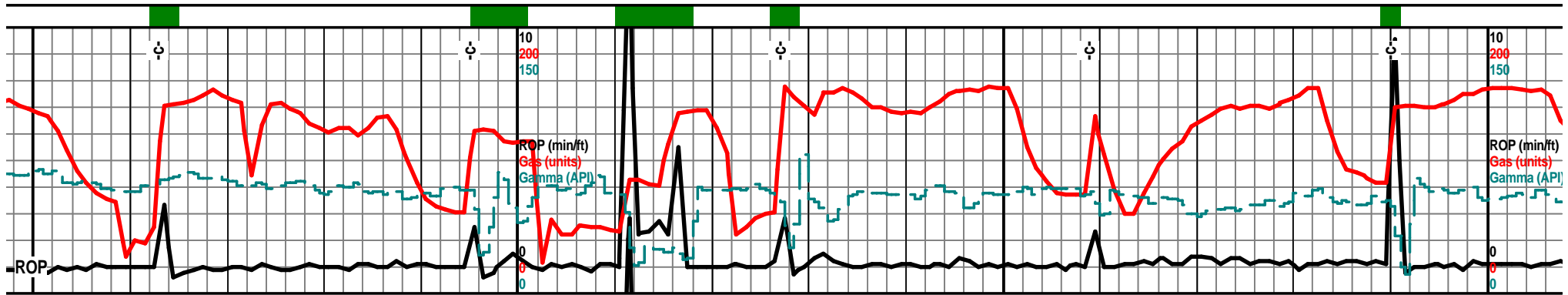


7040 7060 7080 7100 7120 7140 7160 7180

				4520 TVD						Samples finer with depth much sharp jagged steel in spls
				MTD 7094 TVD 4639 (-3230)						
t, glau, or,	chrt clr lt tan lt gry, shrp frsh, opa, blkly ang shards, transp, transl in prt, tr foss frag inclu, tr glau, tan brn mottled weath trip por, pp moldic por, spotted brn/blk stain		chrt clr lt tan/gry shrp frsh, opa, blkly ang pcs, transp, mstly transl, tr foss frag inclu, tan brn mottled weath trip edge por, pp moldic por, spotted tan brn stain		chrt clr lt tan lt gry shrp, frsh, opa, blkly ang shards, opa, transl, transp in most, tan brn mottled weath trip text, pp moldic por, tan gran spotted stain filmy SFO on spt wter				chrt clr lt gry shrp frsh, opa, blkly shards, tr transl in most, tr foss frags inclu, tr glau, tan mott weath trip text por, pp moldic por, spotted/fair tn brn stain	
	Inc. 89.1 @ 181.9 az	Inc. 88.3 @ 182.1 az 4638'	Inc. 88.8 @ 182.1 az 4639'		Inc. 89.2 @ 182.5 az 4639'			Inc. 89.7 @ 182.5 az 4640'		
	ry frsh shrp blkly ang, tr foss inclu, tr brn mottled weath sli trip text, pp r, spotted tan brn some blk stain, 1-2 green flky f xln dolo, tr glau	chrt clr lt gry lt tan shrp, frsh, opa, tansp, transl, sharp shards, tan brn weath trip edge text, spotted tan brn stain, odor? SSFO on spl wter	chrt clr lt tan lt gry shrp, frsh opa, transp, much transl, foss frags tr glau, brn mottled weath sli trip por, pp moldic por, spotted/fair tan brn blk stain		chrt clr lt gry shrp frsh opa blkly ang shards, transl, transp in most, tr foss frag incul tr glau, spotted tan brn stain, pp moldic por			chrt clr lt g transl, tran tan brn sp		
				4690						

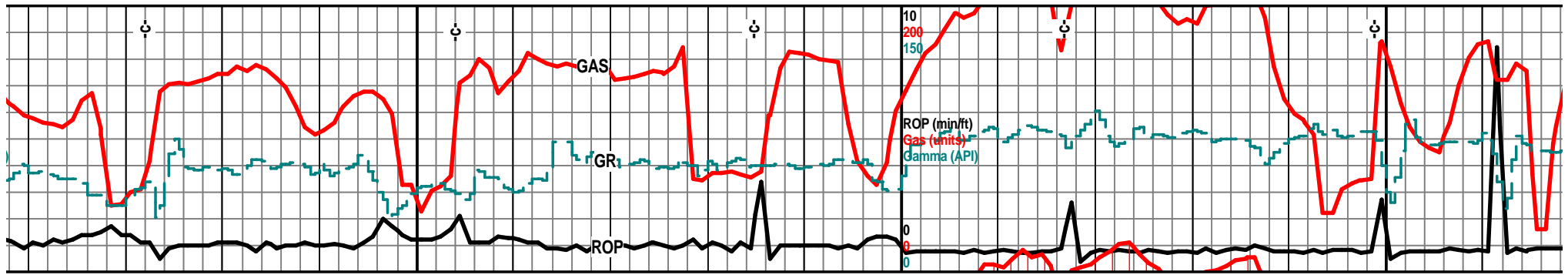


Ft	7200	7220	7240	7260	7280	7300	7320	7340
	4520 TVD					4520 TVD		
		MTD 7221' TVD 4640 (-3231)					5 pm 7308' Friday October 7, 2011	MTD 734 TVD 4642 (-3
ansp, brn	chrt clr lt gry shrp frsh opa q blky ang shards, transl, mstly transp, foss frag inclu, tr glau, tan brn mottled weath trip text, spotted tan brn stain, filmy SFO on spl water, nodor in any doh!		chrt lt gry clr shrp frsh blky ang pc, transl, transp, foss frags, tr glau, tan brn mott weath edge trip por, spotted tan brn stain, nodor in any of this,			chrt lt gry clr shrp frsh blky ang shards, mstly transp, tr transl, foss frag inclu, tr glau, weath edge trip type por, pp moldic por, spotted brn blk stain, nodor		chrt lt gry off wht, tr wht, shrp, blky ang pcs & shards, opa q transp, some transl, foss frags inclu, tr glau, weath gran trip text por, pp/mm por, spotted/fair tan brn stain, filmy sho on spl
nc. 90.0 @ 182.3 az 4640'		Inc. 90.4 @ 182.5 az 4640'		Inc. 89.1 @ 181.9 az 4640'		Inc. 88.8 @ 1181.8 az 4641'	Inc. 88.8 @ 182.0 az 4641'	Inc 1
ry, shrp frsh, opa q, blky ang shards, sp in most, tan brn weath trip text por, spotted stain, pp moldic por, filmy SFO		chrt clr lt gry shrp frsh opa q, blky shards, tr foss inclu, tr glau, plentiful in prt, tansl, transp, weath sli trip text por, pp/mmoldic por, spotten brn stain		chrt wht off wht tr wht clr, shrp frsh opa q transl, mstly transp, tr foss frag inclu, tr glau, tan brn mottled weath trip type por, pp moldic por, spotted/fair tan brn stain		chrt off wht lt gry shrp frsh blky ang pcs & shards, opa q, transp, some transl, tr foss frag inclu, tr glau, tan brn mottled weath sli trip por, tan brn spotted stain		chr lt tan lt shards, tra stain, pp m
	4690					4690		

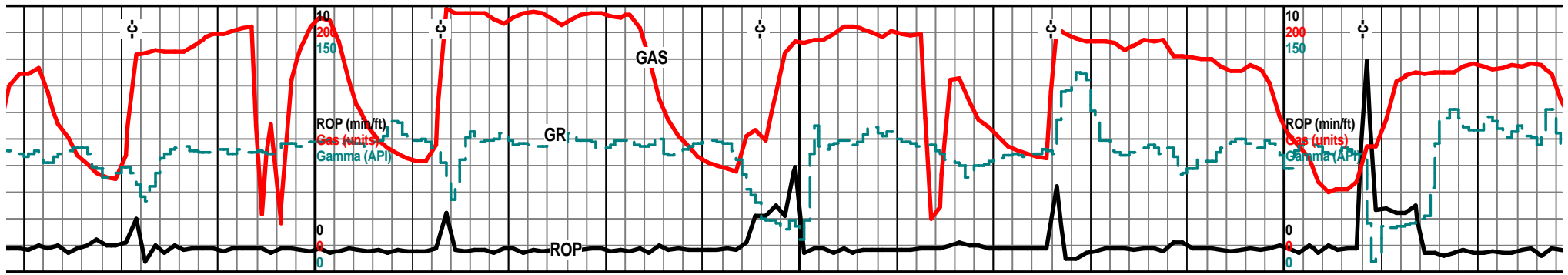


Depth (ft)	7360	7380	7400	7420	7440	7460	7480	7500
ROP (min/ft)			4520 TVD		4540 TVD			4540 TVD
Gas (units)								
Gamma (API)								
Notes	Samples become finer, show/stain is less obvious, percent of fresh vrs weathered material varies and changes along the way.			MTD 7412 TVD 4643 (-3234)		chrt lt gry clr, frsh shrp opa, blkly ang brkn pcs, transl, mottled tan brn weath sli trip text, pp moldic por, spotted stain, floating oil droplets on spl water	chrt lt tan clr lt gry, shrp frsh, opa, shards an brkn blkly pcs, tr foss inclu, tr glau, tan brn weath edge, tr trip text, spotted tan brn stain	
Inclination		Inc. 88.7 @ 181.5 az 4643		Inc. 89.3 @ 181.2 az 4643'	Scale Change Inc. 89.5 @ 181.4 az 4643'		Inc. 89.5 @ 181.2 az 4644'	Inc. 89 @ 180.9 az 4644'
Other	88.5 @ 181.7 az 4642							
Bottom			4690		4710			4710

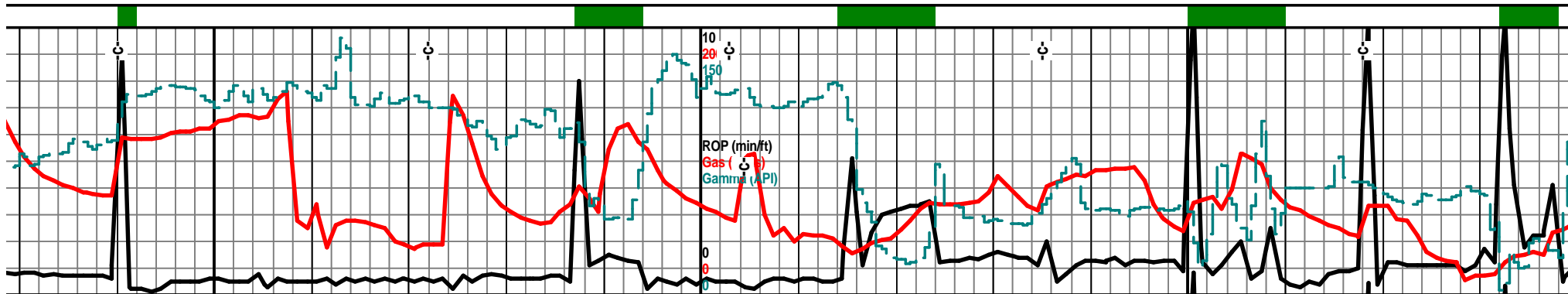
Notes	gry shrp frsh opa, blkly ang pcs and nsp. weath sli trip text, spotted tan brn moldic por, filmy SFO	chrt clr lt gry tr hwt shrp, frsh opa, blkly ang pcs, shards, weath trip text, spotted tan brn stain, pp moldic por	chrt lt gry clr, frsn shrp opa, shards & blkly ang brkn pcs, transp, spotted trip weath text, spotted tan brn stain, tr blk stain	chrt clr lt gry tan shrp frsh opa, transl, transp, tr foss frags, tr glau, mottled tan brn weath trip text, spotted stain pp moldic por, same	chrt wth o ang pcs, sli tan brn sta
-------	--	---	---	---	-------------------------------------



7507 (-3235)	7540	7560	7580	7600	7620	7640	7660
		Samples become finer with depth, show/stain is less obvious, percent of fresh vrs weath trip material varies and changes along the way.		4540 TVD MTD 7602 TVD 4646 (-3237)			
depth	chrt clr lt gry, clr, tranp, transl, shrp, frsh, opaq, brkn blkly pcs, lt tan weath sli trip text, spotted lt brn stain pp/mldic por, tr foss frags inclu, tr glau, oil droplet floating, RBSFO		chrt lt gry clr, frsh, shrp transl, tranp pce, brkn blkly ang pcs, tr glau, tr foss inclu, tan lt brn stained sli weath trip text por, spotted tan brn stain nodor, floaters		chrt clr lt gry shrp frsh, blkly ang brkn pcs, shards, foss frag inclu, tr glau, sli weath trip text, spotted brn stain, pp/ moldic por,		chrt lt gry clr, shrp frsh, blkly ang brkn pcs, weath gran sli trip text por pp, moldic por spotted stain, floating ol droplets, nodor
l.1 @ 4'		Inc. 89.1 @ 180.9 az 4645'	Inc. 89.3 @ 180.8 az 4645'	Inc. 88.6 @ 180.8 az 4646'		Inc. 88.6 @ 180.0 az 4646'	Inc. 88.7 @ 180.5 az 4647'
	lt gy clr transl, tranp, shrp frsh blkly hards, lt tan weath trip egde, spotted in, pp moldic por		chrt lt gry shrp frsh, opaq, shards, brkn blkly ang pcs, lt tan stain w/sli weath trip text, spotted stain, mottled tan lt brn stain,		chrt clr lt gry shrp, frsh, opaq, transl, tranp, shards, brkn ang blkly pcs, sli weath trip text, spotted tan brn stain, pp moldic por		chrt lt gry lt tan, lt gry shrp, frsh, opaq, transl, tranp, opaq, weath edge, sli weath trip text, spotted brn stain, nodor, tr glau, tr foss frag inclu
				4710			chrt lt gry clr, sha transl, tranp, tr f brn stain, pp molc

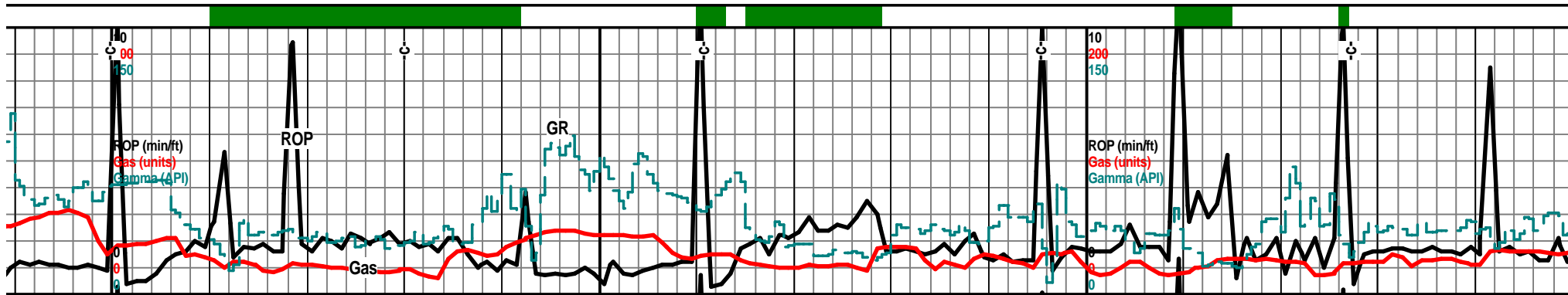


7680	7700	7720	7740	7760	7780	7800	7820
	4540 TVD					4540 TVD	
MTD 7697' TVD 4648 (-3239)						MTD 7793 TVD 4651 (-3243)	
chrt clr lt gry, shrp frsh opa, blk, blk brkn ang pcs, shards, transl, tranp pcs, scat weath gran trip text pcs, spotted tan brn stain pp moldic por tr glau		chrt clr lt gry wht, shrp frsh, opa, transl, tranp in most, pyriic, tr foss frags inclu, tr glau, spotted tan brn stain, mottlded tan brn weath sli trip text pp/moldic por, nodor, RBSFO on wtr		chrt with lt gry wht, shrp frsh opa, blk shards, transl, mstly tranp, foss frags inclu, spotted tan brn stain, mottled tan brn weath trip text, pp/moldic por, nodor, filmy SFO		chrt clr lt gry shrp frsh opa, shards, blk brkn pcs, tranp, scat weath sli trip text, moldic por, spotted tan brn stain,	
@	Inc. 88.6 @ 180.5 az 4648'	Inc. 88.4 @ 180.3 az 4649'	Inc. 88.3 @ 180.6 az 4650'	Inc. 88.5 @ 180.5 az 4654'	Inc. 88.5 @ 180.7 az 4651'		
rds, brkn blk ang pcs, oopaq, sss frag inclu, gr glau, spotted fic por, filmy SFO nodor	chrt lt gry clr transl, tranp pcs, shrp frsh opa, blk brkn pcs, weath trip gran weath pc, spotted brn stain, pp moldic pcs, tr glau, floaters	chrt wht lt gry shrp frsh opa, transl, blk brkn pcs, weath trip text por, scattered tan brn stain, pp moldic por	chrt clr lt gry shrp frsh opa, blk ang pcs, transl, tranp in most, weath sli trip edge, spotted tan brn edge stain, pp moldic por	chrt clr lt gry shrp frsh opa, blk shards, wea brn blk stain, pp			
	4710					4710	

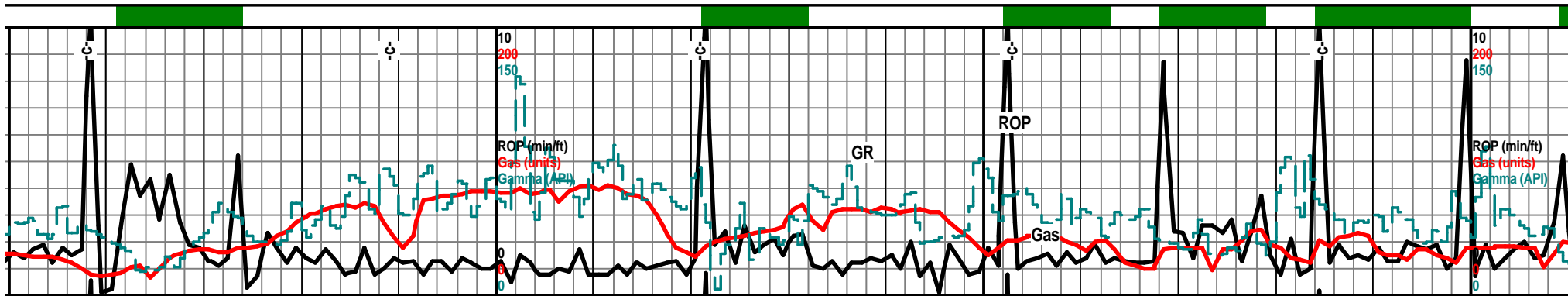


7840 7860 7880 7900 7920 7940 7960 7980

<p>7 am 7840' Oct. 8, 2011 Bit Trip 7840'</p> <p>Drill ahead after trip at 6 pm</p>		<p>MTD 7888' TVD 4654' (-3245)</p>	<p>4540 TVD</p> <p>17'</p>	<p>chrt lt tan, clear, shrp, opa, frsh, chrt shards, semi opa to mostly transparent, msly broken angular pieces, trace fossil fragment incution, tr spotted glau, Mix of frsh and wht brn mottled sli weathered sli tripolitic texture, spotted tan brown stain</p>	<p>Samples very fine and granular, broken, blocky, crushed chrt</p> <p>chrt clr white light gray, frsh sharp, blk broken pcs, semi-opaq to semi transparent, rare fossil inclu, mix of frsh and weath tripolitic text, pp, moldic por, mix of barren and spotted stain, dul UV, tr filmy SFO on wtr, nodor in any</p>
<p>ang pp</p> <p>chr clr lt gry frsh shrp blk ang opa, transl, transp, brkn ang pcs, weath sli trip text edge, ppmoldic por, spotted tan brn stain, filmy sfo in sple</p>	<p>Inc. 88.1 @ 180.7 az 4652'</p>	<p>chrt lt gry clr, shrp frsh opa, foss frags inclu, transl, transp, brkn blk ang pcs, weath sli trip por, spotted brn blk stain, nodor, filmy SFO on spl wtr</p> <p>Inc. 86.6 @ 180.7 az 4654'</p>	<p>4625</p>	<p>Inc. 86.7 @ 180.4 az 4656'</p>	<p>Inc. 86.4 @ 180.6 az 4658'</p> <p>Inc 86.0 @ 180.8 az 4660'</p>
<p>p frsh opa, blk ang brkn pcs, th sli trip text edge, spotted tan moldic por,</p>		<p>chrt lt gry clr, sharp frsh ang blk brkn pcs, tr brm mottled trip/weath/gran por, spotted stain poor samples</p>	<p>4710</p>		

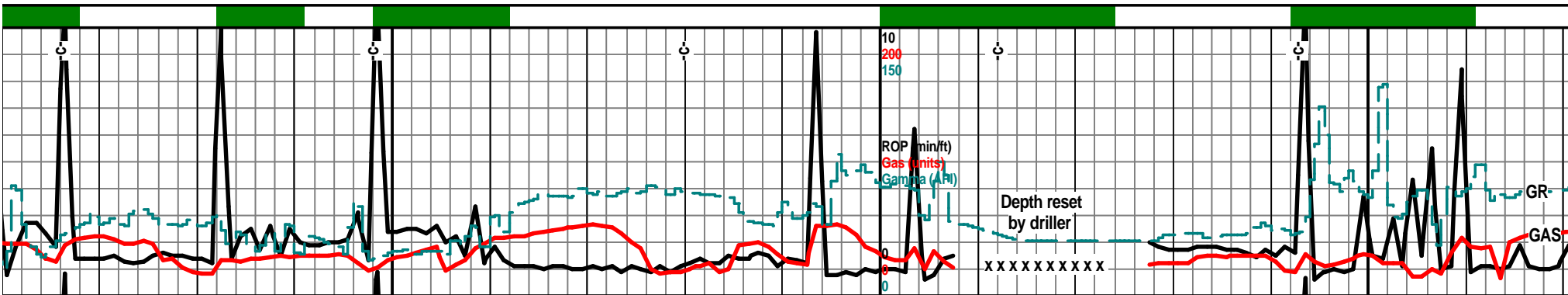


8000	8020	8040	8060	8080	8100	8120	8140
4540 TVD					4540 TVD		
	MTD 8014 TVD 4662 (-3253)						MTD 8142 TVD 4665 (-3256)
	chrt white off white, clear, light grey, frsh, shrp, blk, some blk any brkn pieces, semi opa, mostly transparant, tr fossil inclusions, weathered tripolitic text edge, pp/moldic por, mix of barren and spotted tan/brown stain, dull UV, fimy SFO (rare), tr blk asphaltic stain nodor in any		chrt white, off white, lt gray, sharp, fresh, semi opa to transparant, tr transl, mostly broken blocky pieces, tr fossil inclusions, trace white with glau inclusions, weathered trip text edge, vis pp/moldic por, mixture of barren and spotted tan/brn stain, tr black greasy stain, nodor, trace white fine xln, chrty calc dolo/lime, chalky, flakey			chrt clear, off white, light grey, tr white, fresh, sharp, fresh sharp shards, mostly broken crushed, angular in part, semi-opaq, mostly transparant, trace fossil inclusions, glau, good mix of weathered trip edge texture/porosity, pp & weath moldic porosity, good to fair spotted tan brown stain, tr asphaltic stain, dull UV, tr filmy SFO, trace floating oil droplets, nodor in any	
	Inc. 86.0 @ 181.0 az 4662'	Inc. 88.2 @ 181.9 az 4663'		Inc. 89.5 @ 181.9 az 4664'	Inc. 89.0 @ 182.0 az 4664'		Inc. 89.0 @ 182.0 az 4665'
4625					4625		
4710					4710		

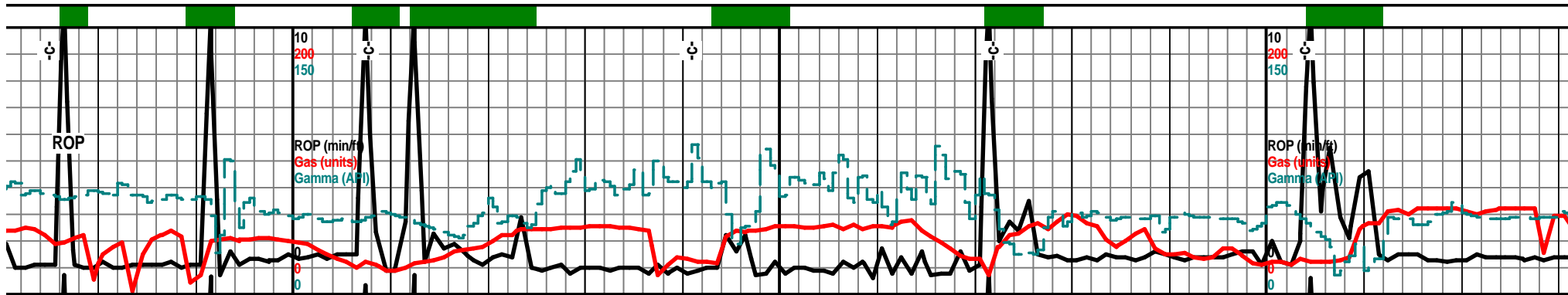


8160 8180 8200 8220 8240 8260 8280 8300

			4540 TVD							4540 TVD
			7 am 8192' Sunday October 9, 2011						MTD 8269 TVD 4668 (-3259)	
chert white, clear, tr lt grey, fresh, sharp, sharp shards in most, blk broken angular in some, semi opa, mostley semi transparant, trace transl, some/rare fossil inclusions, good amount of glau, 50-50 weathered trip edge text/fresh, spotted tan brn stain, pp moldic porosity, dull UV, filmy SFO on spl water, tr floating oil droplets, trace asphaltic stain, nodor. trace white f xln, chrty, chalky dolo/lime, glau				chrt white, light gray, fresh, sharp, sharp shards and broken crushed blocky angular pieces, semi-opaq, some transparent, rare fossil inclusions, good amount of glau, good mix of vit fresh and weathered tripolitic texture, pp moldic porosity, spotted to fair tan brown stain, dull UV, filmy RBSFO, tr floating oil droplets and gas bubbles, odor?? trace wht off wht f vf xln chrty dolo/lime, glau, chrty soft sub chalkey				chrt white lt gry mostly clear transparent, sharp, fresh, semi-opaq, trace semi-transparent, some fossil inclusions, tr glau, 50-50 mix off fresh chrt as above and weathered trip text, pp & moldic porosity, spotted tan brown stain, trace blk asphaltic stain, dull UV, filmy SFO, trace oil droplets, trace gas bubbles, sli odor in cooked dry samples only, some floating chert pieces, tr white f xln chlky chrty dolo/lst, green tint, glau		
	Inc. 88.7 @ 181.8 az 4666'		Inc. 88.6 @ 4625 182.1 az 4666'		Inc. 88.7 @ 182.3 az 4667'		Inc. 88.2 @ 182.3 az 4668'		Inc. 87.7 @ 182.2 az 4669'	
			4710							4710

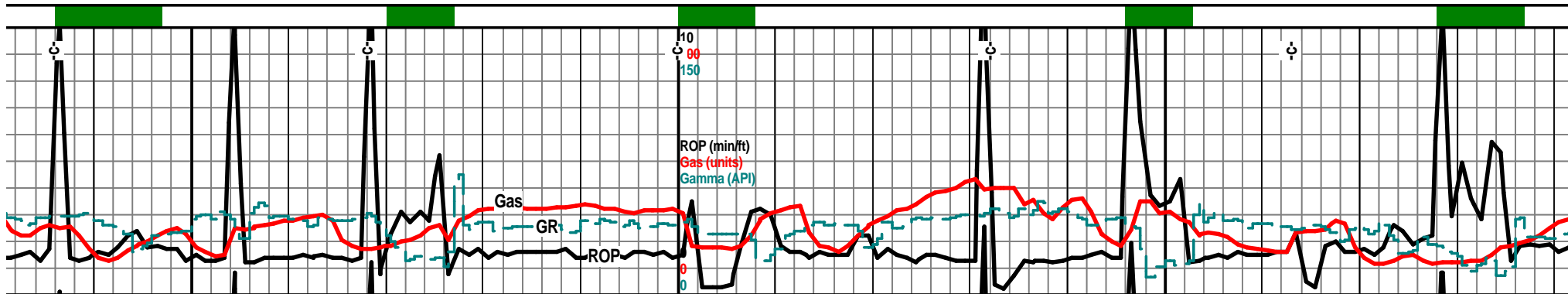


8320	8340	8360	8380	8400	8420	8440	8460
				4540 TVD			
		"mighty fine samples"					
<p>chert white off white, lite gray, sharp, fresh, blocky angular crushed pieces, semi-opaq, mostly transparent, trace fossil fragment inclusions, much glau, mix of fresh chert as above and weathered tripolitic textured porosity, spotted to fair tan brown stain with porosity, trace blk greasy stain, dull UV, filmy SFO in part, tr floating droplets, trace hidden gas bubble, some floating chert pieces,</p>		<p>chrt white lite gray, some off white, sharp, angular, blocky broken pieces, semi-opaq, mostly transparent, tr fossil fragments, 50-50 mix of fresh chert as above and chert with weath tripolitic edge porosity, spotted to fair tan to brn stain, trace asphaltic/greasy, dull to bright UV, filmy RBSFO on sample water, tr floating droplets, tr gas bubbles, floating chrt cutting/show, trace calc dolo, tan with green tint, f xln gran soft chky, glau</p>			<p>chert-white, off white, clear, light gray, shrp, frsh, blocky crushed pieces, semi-opaq, trace translucent, mostly transparent, trace fossil fragment inclusions, remains a mix of 50-50 fresh chert as above and weathered tripolitic weath type porosity, spotted to fair tan brown stain, pp and moldic porosity, dull UV, trace floating oil droplets, tr gas bubs, trace greasy asphaltic stain, nodor in wet samples</p>		<p>chert white off w fresh, blocky an mostly transpare glau, remains a r above, and weat spotted tan brow porosity, dull UV some greasy asf samples have no it's very bad!</p>
Inc. 87.7 @ 182.3 az 4670'		Inc. 88.2 @ 182.5 az 4672'		Inc. 88.7 @ 183.1 az 4672'	4625	Inc. 89.6 @ 183.0 az 4673'	Inc. 88.7 @ 183.3 az 4673'
				4710			



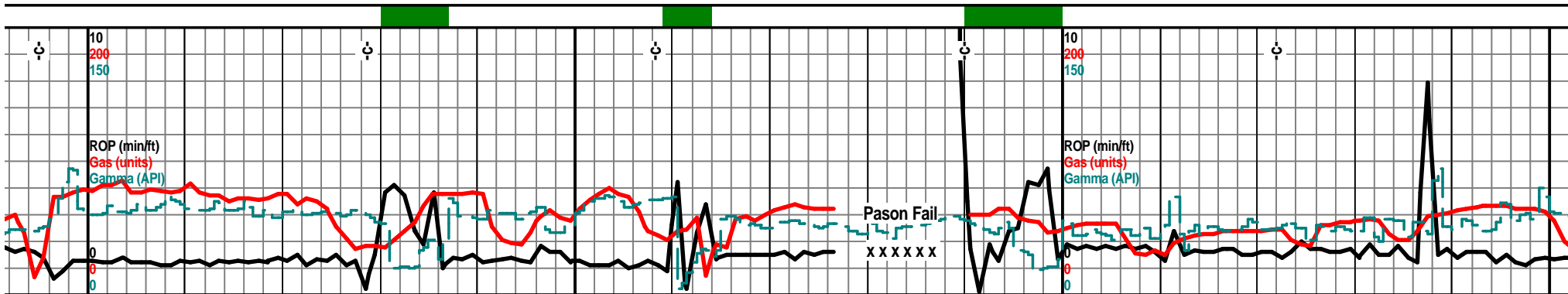
8480 8500 8520 8540 8560 8580 8600 8620

		4540 TVD						4540 TVD		
			Bit Trip 8512'							
'hite, light gray, clear, sharp gular crushed pieces, semi-opaq, ant, some fossil fragment, trace mix of 50-50 sharp fresh chert as hered tripolitic edge texture, n stain with pp and moldic , some floating oil droplets, haltic stain nodor in any, xt changed except for size, and			chert clear light gray, mostly clear, sharp, fresh, blocky angular crushed rubbly pieces, ultra fine, semi-opaq, mostly transp, trace transl, good mix of fresh with tan brn mottled weath tripolitic textured edge, spotten brown stain, pp and moldic por, poor samples after bit trip, poor samples anyhow!!			chert white, off white, light gray, sharp, fresh, blocky crushed broken pieces, semi-opaq, mostly transparent, trace transl, trace fossil fragment inclusions, mostly fresh as above with mix of fresh and weath slightly tripolitic texture, spotted to some fair tan brown stain, tr blk asphaltic stain, floating chert fragments in sample, trace filmy RBSFO, some floating oil droplets, trace odor in cooked dry samples			chert white off white, clear, shrp, l pcs, semi-opaq, some cloudy tran fragment inclusions, trace glau, m weathered sli trip edge texture, s stain, greasy black stain in some, droplets floating in sample water brown stain floating also, nodor	
	Inc. 88.5 @ 183.2 az 4674'	4625	Inc. 92.5 @ 183.5 az 4674'		Inc. 94.0 @ 183.3 az 4672'		Inc. 92.6 @ 182.5 az 4670'	4625	Inc. 91.9 @ 181.8 az 4669'	
		4710						4710		

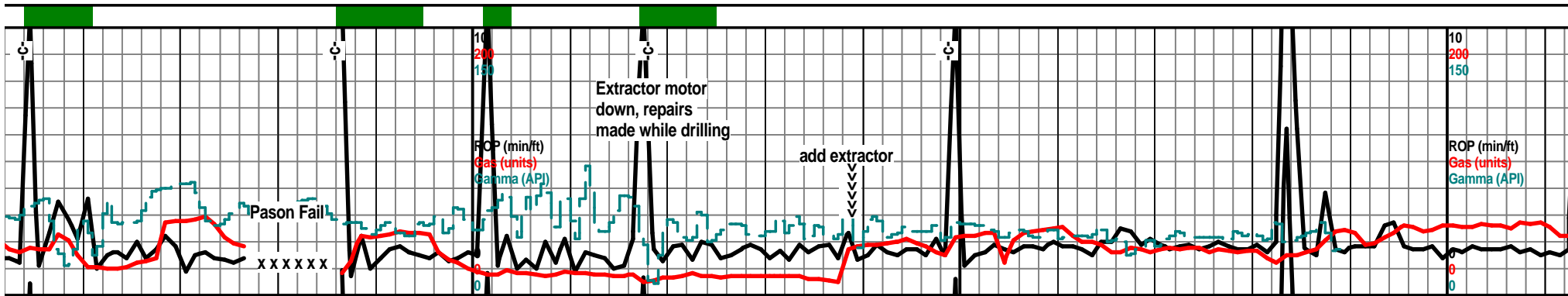


8640 8660 8680 8700 8720 8740 8760 8780

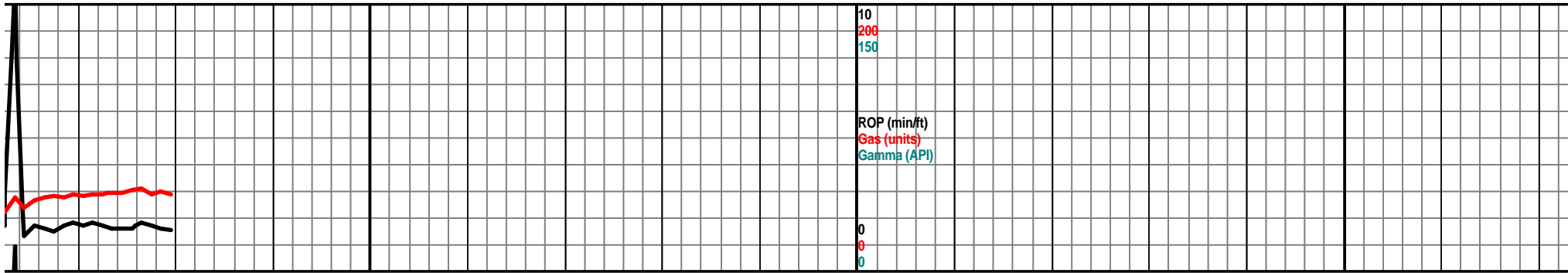
				4540 TVD					
frsh, blkly ang isl, trace foss ix of fresh with otted tan brn dull UV, oil , chert with tan		chert white, off white, clear, sharp, fresh, blkly, broken crushed pieces, semi-opaq, some cloudy, fossil fragment inclu, tr glauconite, fresh clear white fresh chert with weath sli tripolitic edge, spotted tan brown stain, trace black greasy stain, pp moldic porosity, dull UV, oil droplets on sample water, nodor,				chrt clear, white, off white, tr light gray, fresh, sharp, shards, blkly, semi opaq to semi-transparent, rare fossil inclusion, weathered tripolitic text on edges, pp/moldic porosity, mix of barren and spotted to fair tan brn stain, dull UV, filmy RBSFO and scattered oil droplet floaters, trace black asphaltic stain, tr hidden gas bubble nodor			chert white, off white, clear, trace lite gray, semi-opaq to semi transparent, shards, mostly broken crushed pieces, rare fossil inclusion, trace glau, weathrd sli tripolitic edge text, pp/moldic por, trace crm wht tan calc dolo, f xln gran, mix of barren and spotted tan brown stain, dull UV, filmy SFO, oil droplet "floaters", floating chert pieces with tan brn spotted stain edge, trace black asphaltic stain, nodor in any
Inc. 92.0 @ 181.7 az 4668'		Inc. 91.2 @ 180.9 az 4667'		4625	Inc. 90.8 @ 180.6 az 4666'			Inc. 90.6 @ 180.5 az 4666'	Inc. 90.7 @ 179.8 az 4666"
				4710					



8800	8820	8840	8860	8880	8900	8920	8940
4540 TVD					4540 TVD		
chert white off white, clear, sharp chert shards, blocky, fresh, semi-opaq, mostly semi-transparent, trace translucent, mostly broken crushed pieces, some fossil fragment inclusions, weathered sli tripolitic edge texture, pp sli moldic por, tr crm tan gran f xln calc dolo, mix of barren and spotted tan brn stain, dull UV, trace filmy SFO on sample water, trace black asphaltic stain, some floating brown stained chert flakes, no odor		chert wht off white, trace lite gray, mostly clear, sharp, fresh, blocky, mostly crushed broken pieces, semi-opaq, mostly semi-transparent, trace semi-transparent, some white/cream limestone/calc dolo with fossil fragment inclusions, weathered tripolitic textured edges, good mix of barren fresh chert with spotted tan brown stain with pp/moldic porosity, dull UV, trace black asphaltic stain, some floating chert brown stained chert pieces, nodor			chert white off white, clear, sharp, blkly, ang, pieces, mostly broken crushed pieces, semi-opaq, semi-transp, trace white off white calc dolo, f xln gran soft, mix of barren chert as above and tr weathered tripolitic texture edge, barren and spotted tan brown stain, tr asphaltc greasy stain, pp and moldic porosity, dull UV, filmy RBSFO and some floating chert pieces on sample water		
4625 Inc. 90.4 @ 179.6 az 4665'		Inc. 88.8 @ 179.6 az 4665'		Inc. 87.6 @ 179.8 az 4666'		4625 Inc. 88.1 @ 180.0 az 4668'	Inc. 88.4 @ 180.2 az 4669'
4710					4710		



8960	8980	9000	9020	9040	9060	9080	9100
	cc-upmspls	4540 TVD					4540 TVD
<p>chert white, off white, clear, sharp, blk, angular shards, mostly broken crushed pieces, semi-opaq, semi-translucent, trace white off white calc dolomite, f xln, soft, gran, trace glau, mix of barren fresh opaq chrt, with tr weathered sli tripolitic textued edges, spotted tan brown stain, dull UV, filmy SFO, floating stained chert pieces,</p>		<p>chrt white off white, clear, translucent, semi opaq, sharp fresh shards, mostly broken crushed pieces, trace foss fragment inclusions, trace glau, white off white calc dolo, f xln gran soft, cherty in prt, weathered sli tripolitic edge text, pp moldic por, scattered spotted tan brown stain, dull UV, filmy SFO on sample water</p>		<p>chert white off white tr lt gry, mosly clear, semi-opaq, mostly transparent, some lite translucent, frsh sharp shards, mostly broken crushed, tr calc dolo, lt tan wht f xln gran soft, cherty in part, chert is weatherd sli tripolitic edge text, pp moldic porosity, scattered spotted tan brn stain, dull UV, filmy SFO, gas bubbles, floaters</p>		<p>chert whit semi-opaq mostly cr off white, sli tripoliti spotted st pieces wit</p>	
Inc. 89.3 @ 180.9 az 4669'		Inc. 90.1 @ 181.3 az 4669'		Inc. 90.0 @ 181.3 az 4669'		Inc. 91.1 @ 181.3 az 4668'	Inc. 91.0 @ 181.2 az 4668'
		4625					4625
		4710					4710



9120 9140 9160 9180 9200 9220 9240 9260

4540 TVD

ie off white, lite gray, mostly clear,
 q, semi-transparent, fresh, sharp shards,
 ushed/broken pieces, tr calc dolo, tan
 f xln granular, chrty, chert with weather
 ic weath text, pp moldic por, scatatered
 tain, dull UV, filmy SFO, floating chert
 th stain.

Inc. 91.0 @
 181.2
 4667'
 (Projected)

4625

MTD 9130'

4710

