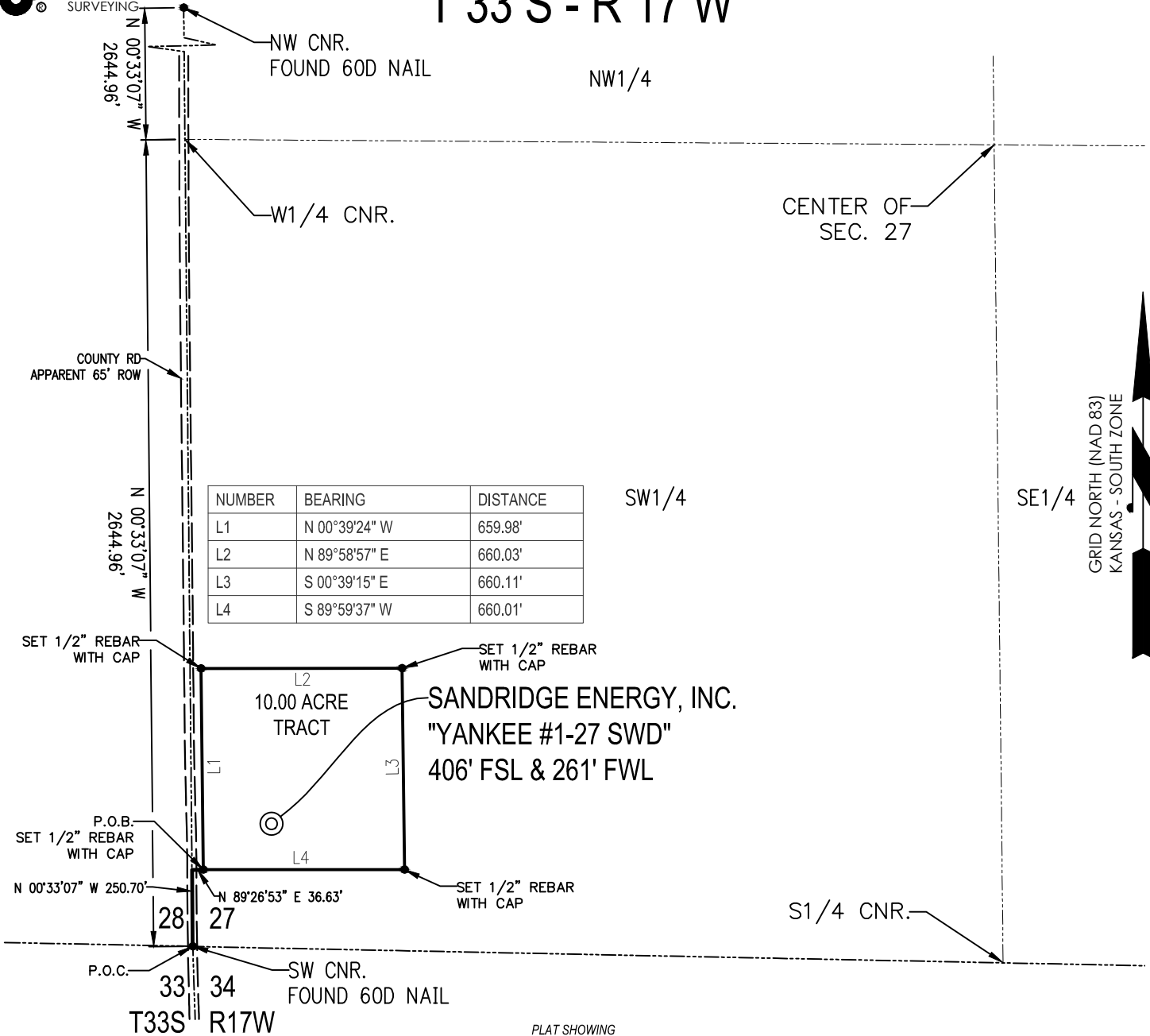




Crafton Tull

SURVEYING

T 33 S - R 17 W



PLAT SHOWING
**10.00 ACRE TRACT OF LAND IN THE
 SW1/4 OF SECTION 27, T33S-R17W,
 COMANCHE COUNTY, KANSAS**

METES AND BOUNDS DESCRIPTION (10.00 ACRE TRACT)

PART OF THE SW1/4 OF SECTION 27, TOWNSHIP 33 SOUTH, RANGE 17 WEST, COMANCHE COUNTY, KANSAS,
 MORE PARTICULARLY DESCRIBED AS FOLLOWS:

COMMENCING AT THE SW CORNER OF SAID SECTION 27;
 THENCE N 00°33'07" W ALONG THE WEST LINE OF SAID SECTION 27, A DISTANCE OF 250.70 FEET;
 THENCE N 89°26'53" E, A DISTANCE OF 36.63 FEET TO THE POINT OF BEGINNING;
 THENCE N 00°39'24" W, A DISTANCE OF 659.98 FEET;
 THENCE N 89°58'57" E, A DISTANCE OF 660.03 FEET;
 THENCE S 00°39'15" E, A DISTANCE OF 660.11 FEET;
 THENCE S 89°59'37" W, A DISTANCE OF 660.01 FEET TO THE POINT OF BEGINNING.

SAID TRACT CONTAINING 10.00 ACRES MORE OR LESS OF LAND AS SURVEYED.

THE COORDINATES ARE BASED ON NAD83 STATE PLANE COORDINATE SYSTEM AS PROCESSED BY OPUS USING THESE STATIONS: DK6487 ICT1 WICHITA ICT1 CORS ARP, DK6489 ICT2 WICHITA ICT2 CORS ARP, & AF9518 LMNO LAMONT CORS ARP ON THE DATE OF 01-05-2012

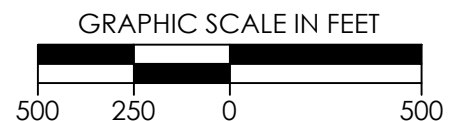
SURVEYOR'S CERTIFICATE:

I, C. ED GRAY, KANSAS LICENSED PROFESSIONAL LAND SURVEYOR, NO. 1404, DO HEREBY CERTIFY THAT THIS PLAT REPRESENTS THE RESULTS OF A SURVEY MADE ON THE GROUND UNDER MY SUPERVISION.

1/19/2012

GENERAL NOTES:

THE TIES AND FOOTAGES SHOWN ON THIS PLAT ARE FROM LINES OF OCCUPATION FROM A SURVEY MADE ON THE GROUND AND / OR BEARING AND DISTANCES FROM THE GENERAL LAND OFFICE PLAT OF THE AREA SHOWN AND MAY NOT BE THE ACTUAL PROPERTY CORNERS. THIS PLAT **DOES NOT** REPRESENT A TRUE BOUNDARY SURVEY.

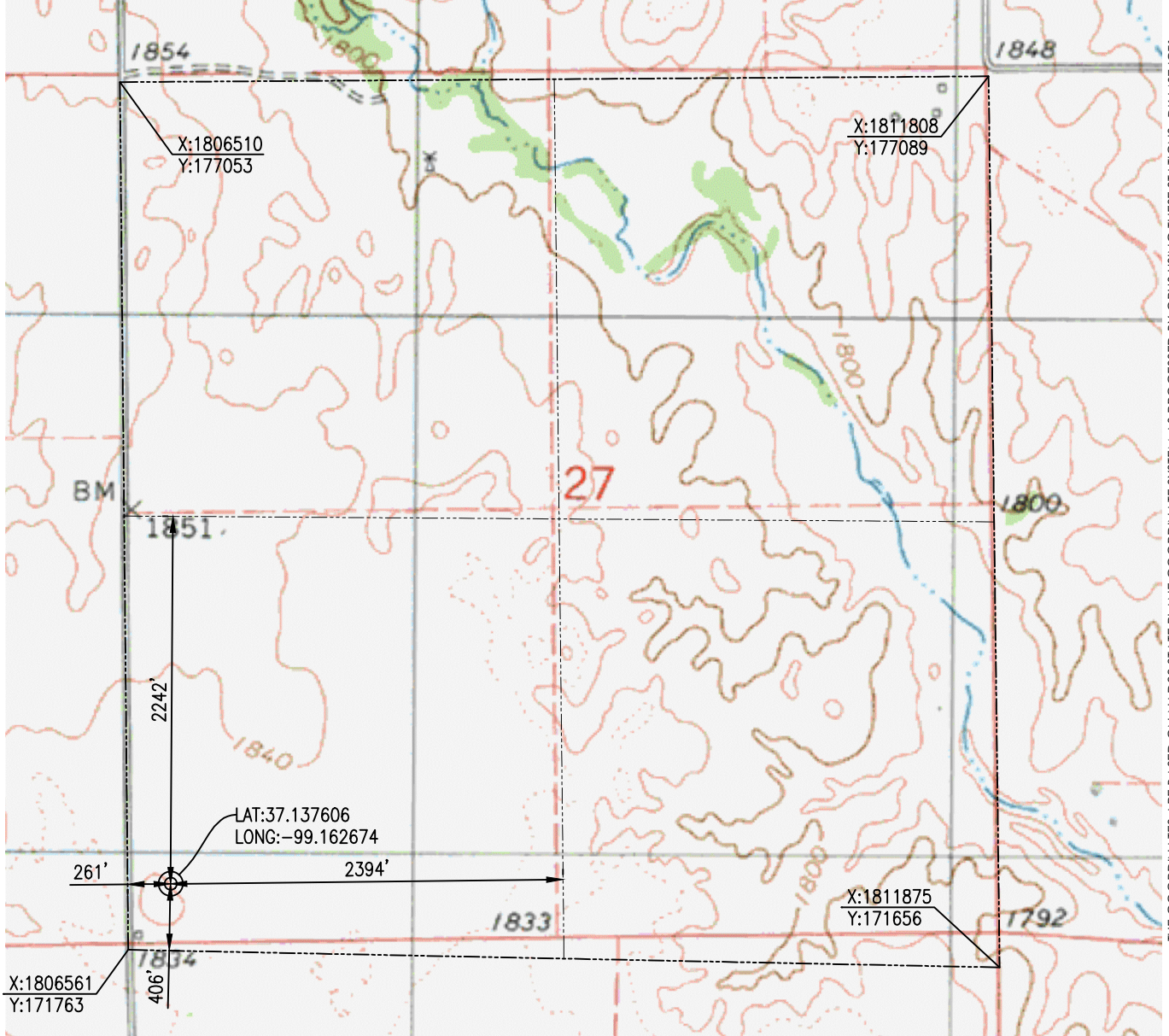


REVISION	SandRidge		
	"YANKEE #1-27 SWD" PART OF THE SW1/4 OF SECTION 27, T-33-S, R-17-W PROPOSED DRILL SITE COMANCHE COUNTY, KANSAS		
	SCALE: 1" = 500'	DRAWN BY: S.ANDER	SHEET NO.: 1 OF 1
	PLOT DATE: 01-19-2012		



Crafton Tull
 SURVEYING

COMANCHE COUNTY, KANSAS
 406' FSL- 261' FWL SECTION 27 TOWNSHIP 33S RANGE 17W 6TH P.M.



THE COORDINATES ARE BASED ON NAD83 STATE PLANE COORDINATE SYSTEM AS PROCESSED BY OPUS USING THESE STATIONS: DK6487 ICT1 WICHITA ICT1 CORS ARP. DK6489 ICT2 WICHITA ICT2 CORS ARP. & AF9518 LMNO LAMONT CORS ARP

OPERATOR: SANDRIDGE ENERGY, INC.

WELL NO: #1-27 SWD

ELEVATION:
 1838' GR. AT STAKE

LEASE NAME: YANKEE

TOPOGRAPHIC & VEGETATION: LOCATION FELL IN A FIELD

GOOD DRILL SITE: YES

REFERENCE STAKES OR ALTERNATE LOCATION
 STAKES SET: NONE

BEST ACCESSIBILITY TO LOCATION: WEST LINE

DISTANCES SHOWN IN (PARENTHESIS) ARE CALCULATED BASED UPON THE QUARTER SECTION BEING 2640 FEET, THOSE SHOWN IN [BRACKETS] ARE BASED ON GLO (GENERAL LAND OFFICE) DISTANCES AND HAVE NOT BEEN MEASURED.

DISTANCE & DIRECTION FROM HWY JCT OR TOWN: FROM THE JCT. OF US-160/US-183/S CENTRAL AVE & E 4TH ST, (COLDWATER, KS), TRAVEL SOUTH ON US-160/US-183 FOR ±3.0 MILES, TURN LEFT (EAST) & TRAVEL ±9.0 MILES, TURN RIGHT (SOUTH) & TRAVEL ±6.0 MILES TO THE SW CORNER OF S27, T33S-R17W.

(THE FOLLOWING INFORMATION WAS GATHERED USING A GPS RECEIVER ACCURACY ±2-3 METERS)	GPS DATUM: NAD-27	STATE PLANE COORDINATES:
	LAT: 37.137606	ZONE: KS-SOUTH
	LONG: -99.162674	X: 1806818.575
		Y: 172164.322

SURVEYOR'S CERTIFICATE: DATE STAKED: 01-05-2012

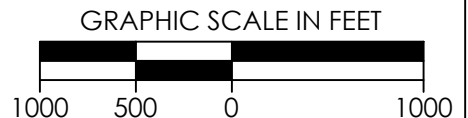
I, C. ED GRAY, KANSAS LICENSED PROFESSIONAL LAND SURVEYOR, NO. 1404, DO HEREBY CERTIFY THAT THIS PLAT REPRESENTS THE RESULTS OF A SURVEY MADE ON THE GROUND UNDER MY SUPERVISION.

GENERAL NOTES:

THE TIES AND FOOTAGES SHOWN ON THIS PLAT ARE FROM LINES OF OCCUPATION FROM A SURVEY MADE ON THE GROUND AND / OR BEARING AND DISTANCES FROM THE GENERAL LAND OFFICE PLAT OF THE AREA SHOWN AND MAY NOT BE THE ACTUAL PROPERTY CORNERS. THIS PLAT DOES NOT REPRESENT A TRUE BOUNDARY SURVEY.



1/19/2012



REVISION	SandRidge		
	"YANKEE #1-27 SWD" PART OF THE SW 1/4 OF SECTION 27, T-33-S, R-17-W PROPOSED DRILL SITE COMANCHE COUNTY, KANSAS		
	SCALE: 1" = 1000'	DRAWN BY: S.ANDER	SHEET NO.: 1 OF 3
	PLOT DATE: 01-19-2012		



Crafton Tull
 SURVEYING

COMANCHE COUNTY, KANSAS

406' FSL- 261' FWL SECTION 27 TOWNSHIP 33S RANGE 17W 6TH P.M.



THE COORDINATES ARE BASED ON NAD83 STATE PLANE COORDINATE SYSTEM AS PROCESSED BY OPUS USING THESE STATIONS: DK6487 ICT1 WICHITA ICT1 CORS ARP. DK6489 ICT2 WICHITA ICT2 CORS ARP. & AF9518 LMNO LAMONT CORS ARP

OPERATOR: SANDRIDGE ENERGY, INC.

WELL NO: #1-27 SWD

ELEVATION:
 1838' GR. AT STAKE

LEASE NAME: YANKEE

TOPOGRAPHIC & VEGETATION: LOCATION FELL IN A FIELD

GOOD DRILL SITE: YES

REFERENCE STAKES OR ALTERNATE LOCATION
 STAKES SET: NONE

BEST ACCESSIBILITY TO LOCATION: WEST LINE

DISTANCE & DIRECTION
 FROM HWY JCT OR TOWN: FROM THE JCT. OF US-160/US-183/S CENTRAL AVE & E 4TH ST,
 (COLDWATER, KS), TRAVEL SOUTH ON US-160/US-183 FOR ±3.0 MILES, TURN LEFT (EAST) & TRAVEL
 ±9.0 MILES, TURN RIGHT (SOUTH) & TRAVEL ±6.0 MILES TO THE SW CORNER OF S27, T33S-R17W.

(THE FOLLOWING INFORMATION WAS GATHERED USING A GPS RECEIVER ACCURACY ±2-3 METERS)	GPS DATUM: <u>NAD-27</u>	STATE PLANE COORDINATES:
	LAT: <u>37.137606</u>	ZONE: <u>KS-SOUTH</u>
	LONG: <u>-99.162674</u>	X: <u>1806818.575</u>
		Y: <u>172164.322</u>

SURVEYOR'S CERTIFICATE: DATE STAKED: 01-05-2012

I, C. ED GRAY, KANSAS LICENSED PROFESSIONAL LAND SURVEYOR, NO. 1404, DO HEREBY CERTIFY THAT THIS PLAT REPRESENTS THE RESULTS OF A SURVEY MADE ON THE GROUND UNDER MY SUPERVISION.

GENERAL NOTES:

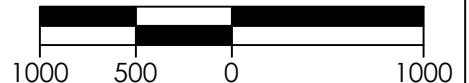
THE TIES AND FOOTAGES SHOWN ON THIS PLAT ARE FROM LINES OF OCCUPATION FROM A SURVEY MADE ON THE GROUND AND / OR BEARING AND DISTANCES FROM THE GENERAL LAND OFFICE PLAT OF THE AREA SHOWN AND MAY NOT BE THE ACTUAL PROPERTY CORNERS. THIS PLAT DOES NOT REPRESENT A TRUE BOUNDARY SURVEY.

DISTANCES SHOWN IN (PARENTHESIS) ARE CALCULATED BASED UPON THE QUARTER SECTION BEING 2640 FEET, THOSE SHOWN IN [BRACKETS] ARE BASED ON GLO (GENERAL LAND OFFICE) DISTANCES AND HAVE NOT BEEN MEASURED.



1/19/2012

GRAPHIC SCALE IN FEET

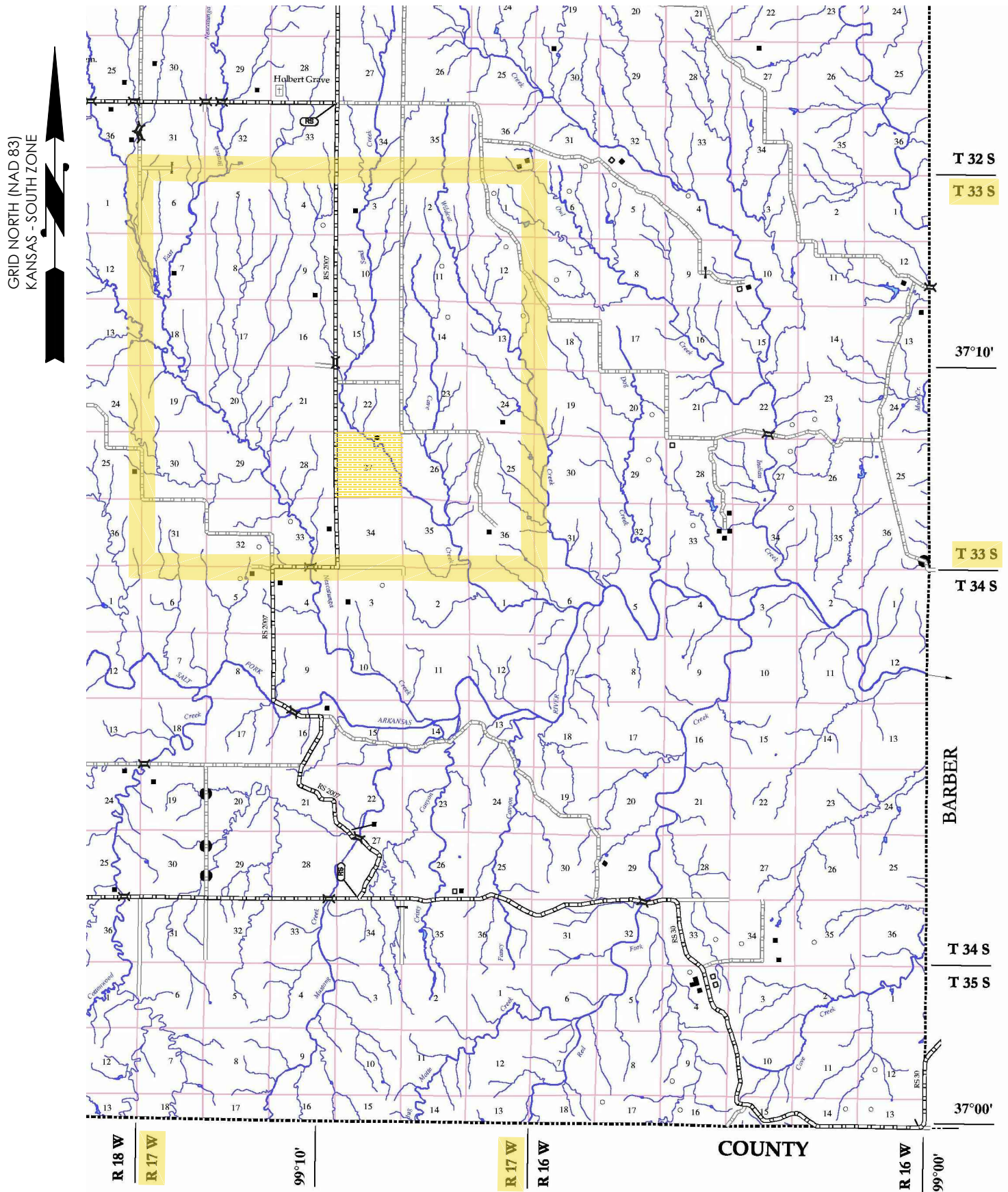


REVISION	SandRidge		
	"YANKEE #1-27 SWD" PART OF THE SW 1/4 OF SECTION 27, T-33-S, R-17-W PROPOSED DRILL SITE COMANCHE COUNTY, KANSAS		
	SCALE: 1" = 1000'	DRAWN BY: S.ANDER	SHEET NO.: 2 OF 3
	PLOT DATE: 01-19-2012		



Crafton Tull
 SURVEYING

VICINITY MAP

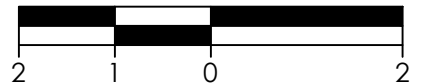


SEC. 27 TWP. 33S RNG. 17W

COUNTY: COMANCHE STATE: KS

OPERATOR: SANDRIDGE ENERGY, INC.

GRAPHIC SCALE IN MILES



REVISION	SandRidge		
	"YANKEE #1-27 SWD" PART OF THE SW1/4 OF SECTION 27, T-33-S, R-17-W PROPOSED DRILL SITE COMANCHE COUNTY, KANSAS		
	SCALE: 1/2" = 1 MILE	DRAWN BY: S.ANDER	SHEET NO.: 3 OF 3
	PLOT DATE: 01-19-2012		