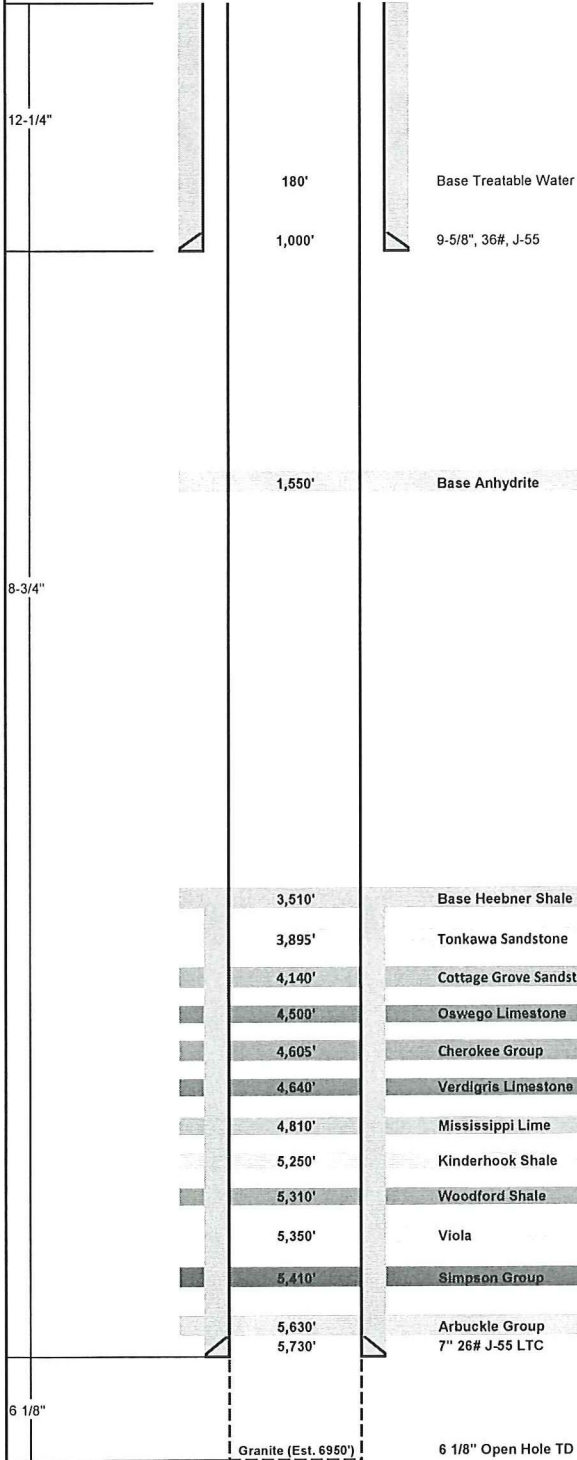


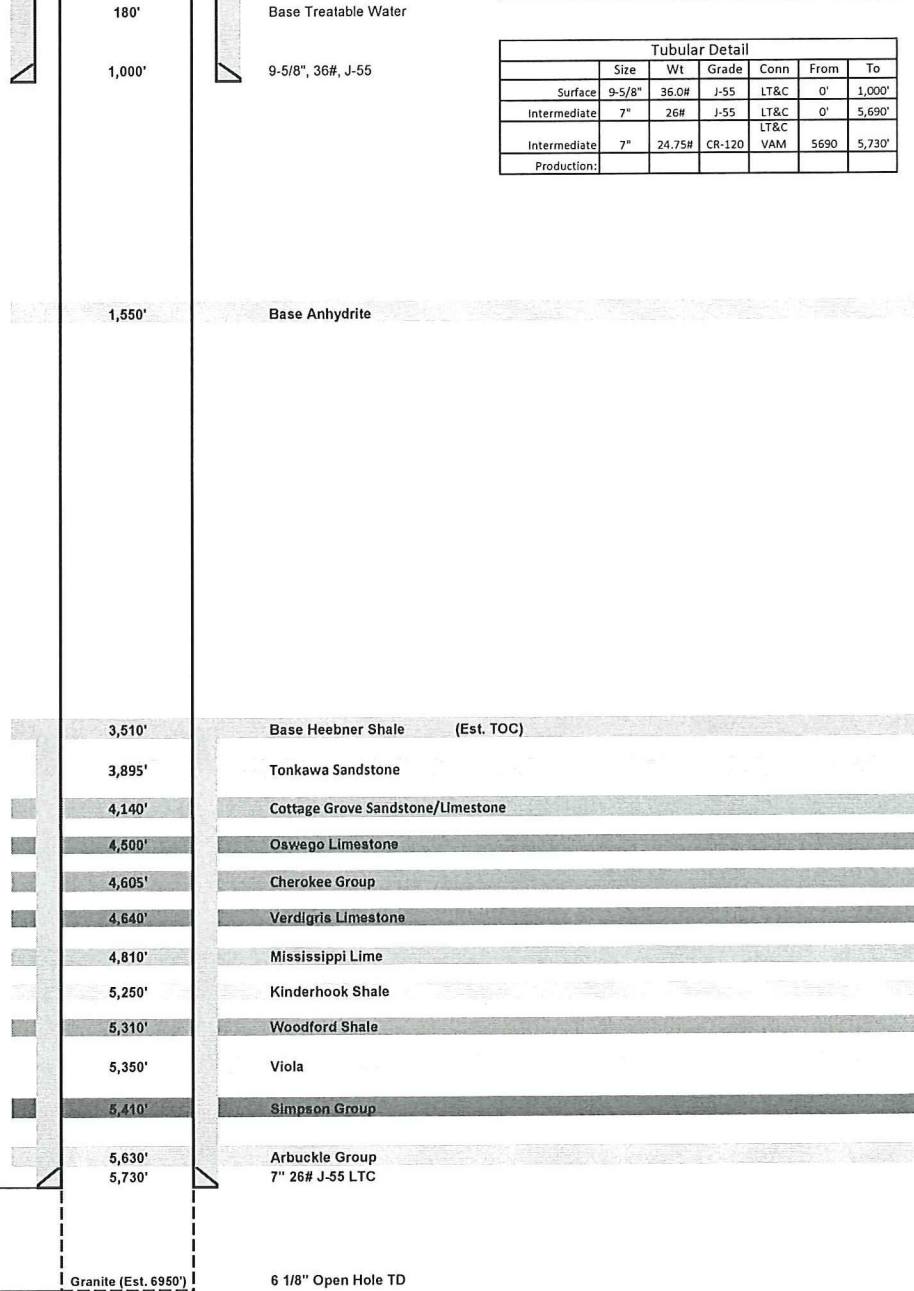


Well: Shea SWD 1-17
 Field: Waldron West
 County: Harper County, Kansas
 Surface: 232' FSL & 236' FEL, Section 17-T355-R07W
 PBHL: 232' FSL & 236' FEL, Section 17-T355-R07W
 GL: 1,284' KB: 1,296'



Wellhead Equipment	
Tubing Head	11" 3M X 7-1/16" 3M
B-Section	
A-Section	9-5/8" SOW x 11" 3M

Tubular Detail						
	Size	Wt	Grade	Conn	From	To
Surface	9-5/8"	36.0#	J-55	LT&C	0'	1,000'
Intermediate	7"	26#	J-55	LT&C	0'	5,690'
Intermediate	7"	24.75#	CR-120	VAM	5690	5,730'
Production:						



Prepared By	Date				
David Mezo	10/7/2011				