

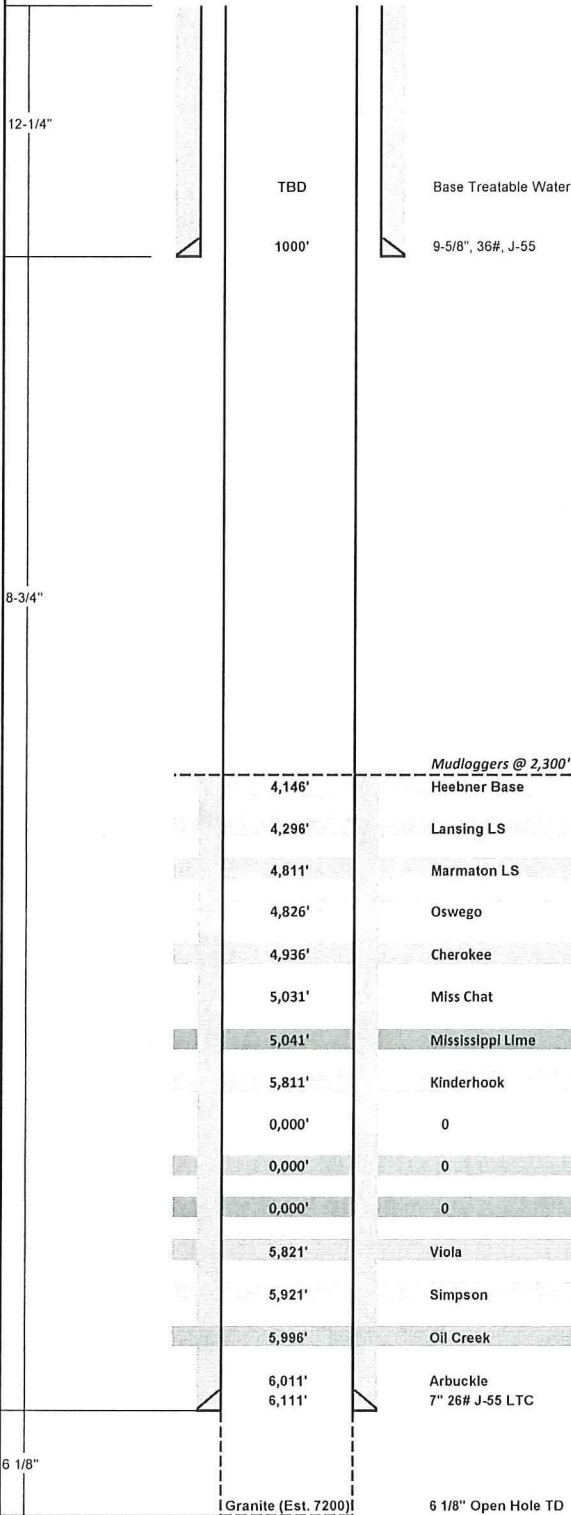


Tomcat 2

832.518.4133

Well: Luke SWD 1-10
 Field: Waldron-Lily
 County: Comanche County, Kansas
 Surface: 1600' FSL & 203' FWL, Section 10-T31S-R20W
 PBHL: 1600' FSL & 203' FWL, Section 10-T31S-R20W
 GL: 2,026' KB: 2,037'

Engineer: Tripp Edwards
 Manager: Roger Wilson
 Geology: Tammy Alcorn
 Production: Dustin Elmore
 Land: Stacey Bryant
 AFE #: TBD



Wellbore: SWD

| Wellhead Equipment | |
|--------------------|---------------------|
| Tubing Head | 11" 3M X 7-1/16" 3M |
| B-Section | |
| A-Section | 9-5/8" SOW x 11" 3M |

| Tubular Detail | | | | | | |
|----------------|--------|--------|--------|------|-------|--------|
| | Size | Wt | Grade | Conn | From | To |
| Surface | 9-5/8" | 36.0# | J-55 | LT&C | 0' | 1000' |
| Intermediate | 7" | 26# | J-55 | LT&C | 0' | 6,071' |
| Intermediate | 7" | 24.75# | CR-120 | VAM | 1 Jt. | 6,111' |
| Production: | | | | | | |

| Logging Program | | | |
|-----------------|--------------|------|--------|
| | Detail | From | To |
| Run #1 | Triple Combo | TD | 1,250' |
| Run #2 | Image | TD | TBD |

| Prepared By | Date | Cementing | Logging Company | Mud Loggers | Mud Company | Directional |
|---------------|------------|----------------|-----------------|---------------------|------------------------|-------------|
| Tripp Edwards | 11/22/2011 | O-Tex | Vendor TBD | PML | Chaparral Drilg Fluids | None |
| | | (580) 475-2538 | | Denis Johnstonbaugh | Ken Bizzell | |
| | | | | 405-820-6784 | (405) 464-8241 | |