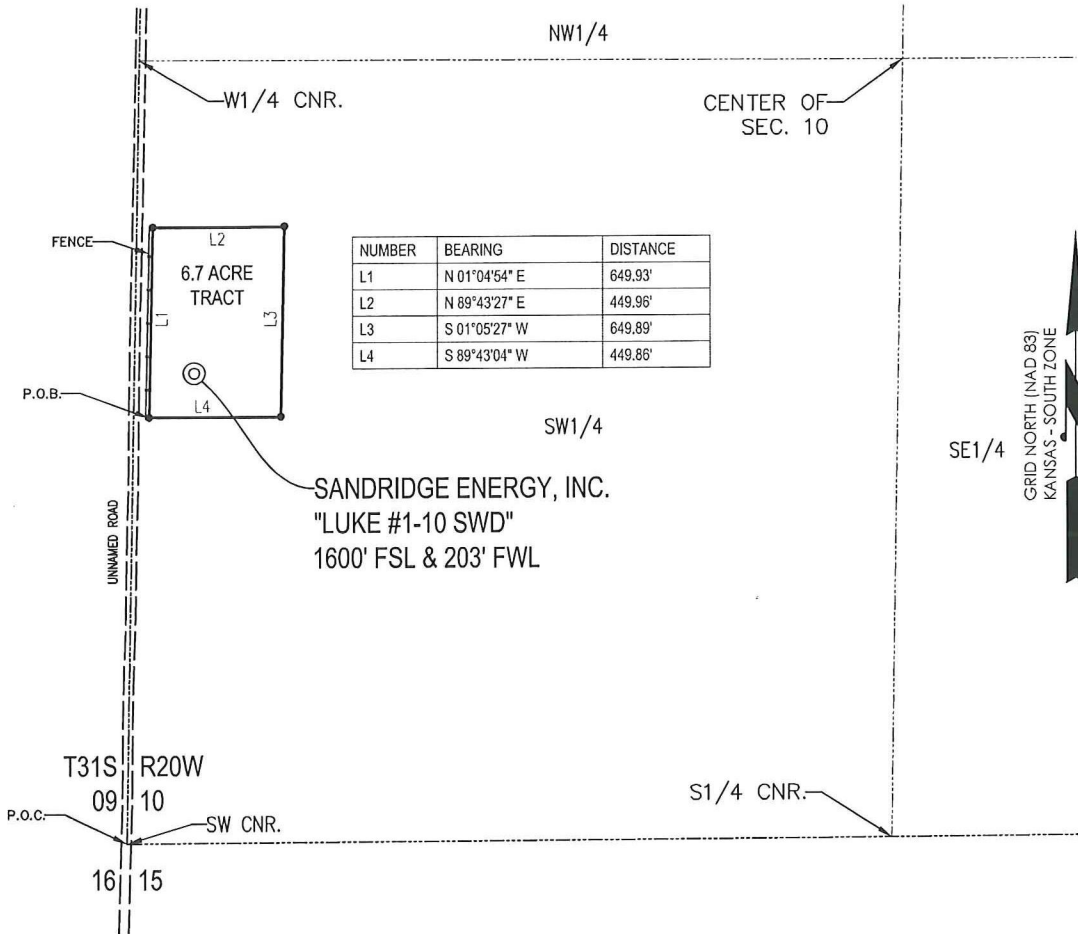


T 31 S - R 20 W



SANDRIDGE ENERGY, INC.  
 "LUKE #1-10 SWD"  
 1600' FSL & 203' FWL

PLAT SHOWING  
**6.7 ACRE TRACT OF LAND IN THE  
 SW1/4 OF SECTION 10, T31S-R20W,  
 COMANCHE COUNTY, KANSAS**

**METES AND BOUNDS DESCRIPTION (6.7 ACRE TRACT)**

PART OF THE SW1/4 OF SECTION 10, TOWNSHIP 31 SOUTH, RANGE 20 WEST, COMANCHE COUNTY, KANSAS,  
 MORE PARTICULARLY DESCRIBED AS FOLLOWS:

COMMENCING AT THE SW CORNER OF SAID SECTION 10;  
 THENCE N 00°58'54" E ALONG THE WEST LINE OF SAID SECTION 10, A DISTANCE OF 1451.66 FEET;  
 THENCE S 89°01'06" E, A DISTANCE OF 52.65 FEET TO THE POINT OF BEGINNING;  
 THENCE N 01°04'54" E, A DISTANCE OF 649.93 FEET;  
 THENCE N 89°43'27" E, A DISTANCE OF 449.96 FEET;  
 THENCE S 01°05'27" W, A DISTANCE OF 649.89 FEET;  
 THENCE S 89°43'04" W, A DISTANCE OF 449.86 FEET TO THE POINT OF BEGINNING.

SAID TRACT CONTAINING 6.7 ACRES OF LAND AS SURVEYED.

**SURVEYOR'S CERTIFICATE:**

I, C. ED GRAY, KANSAS LICENSED PROFESSIONAL LAND SURVEYOR, NO. 1404, DO HEREBY  
 CERTIFY THAT THIS PLAT REPRESENTS THE RESULTS OF A SURVEY MADE ON THE GROUND UNDER MY  
 SUPERVISION.

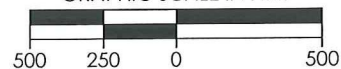
**GENERAL NOTES:**

THE TIES AND FOOTAGES SHOWN ON THIS PLAT ARE FROM LINES OF OCCUPATION FROM A  
 SURVEY MADE ON THE GROUND AND / OR BEARING AND DISTANCES FROM THE GENERAL LAND  
 OFFICE PLAT OF THE AREA SHOWN AND MAY NOT BE THE ACTUAL PROPERTY CORNERS. THIS PLAT  
 DOES NOT REPRESENT A TRUE BOUNDARY SURVEY.



8/24/2011

GRAPHIC SCALE IN FEET



REVISION	SandRidge		
	"LUKE #1-10 SWD" PART OF THE SW1/4 OF SECTION 10, T-31-S, R-20-W PROPOSED DRILL SITE COMANCHE COUNTY, KANSAS		
	SCALE: 1" = 500'	DRAWN BY: S.ANDER	SHEET NO.: 1 OF 1
	PLOT DATE: 08-24-2011		