

T35S, R10W, 6th P.M.

SGOMI

Well location, WATKINS & FARNEY 3510 #18-1H, located as shown in the SE 1/4 NW 1/4 of Section 18, T35S, R10W, 6th P.M., Barber County, Kansas.

BASIS OF ELEVATION

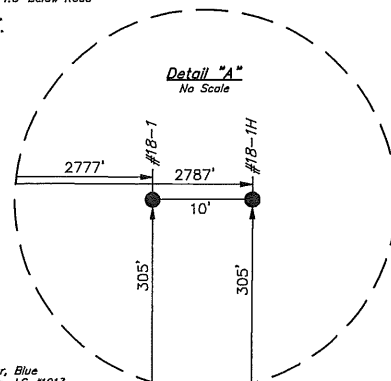
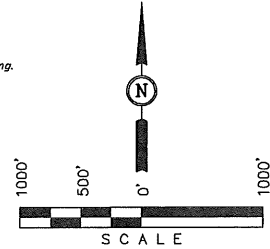
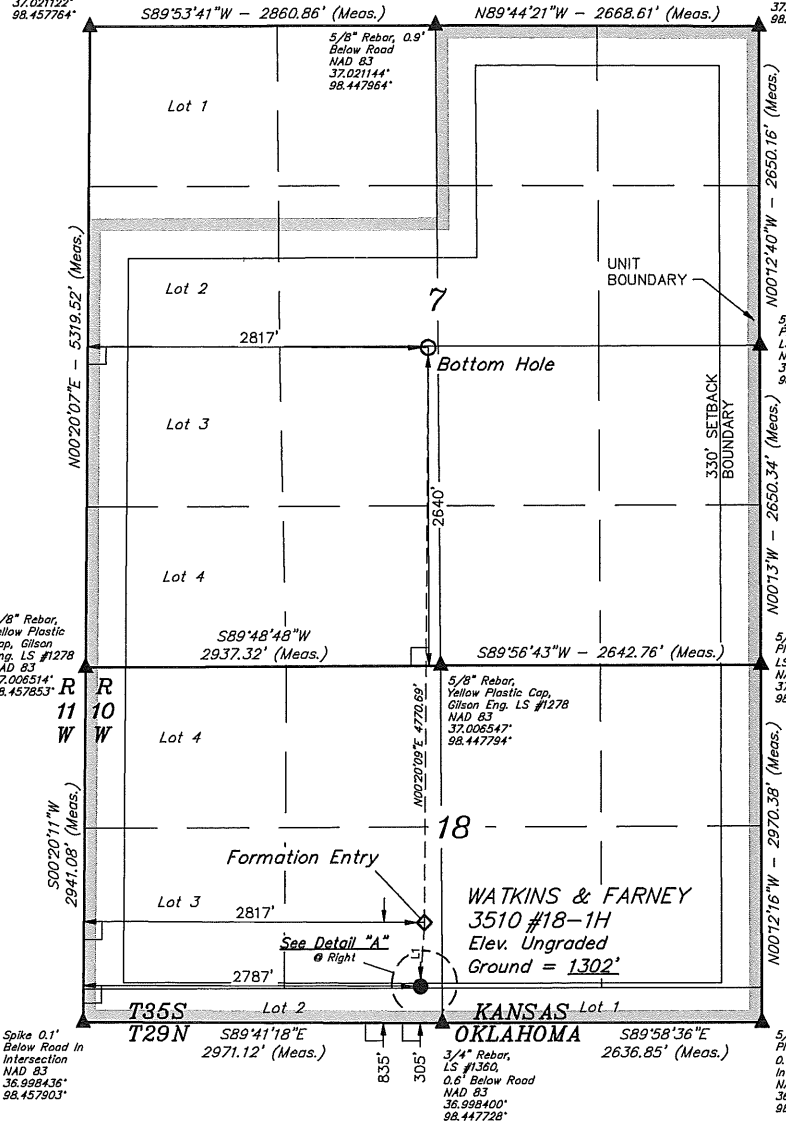
SPOT ELEVATION LOCATED AT THE SOUTHWEST CORNER OF SECTION 12, T35S, R10W, 6th P.M. TAKEN FROM THE CORWIN, QUADRANGLE, KANSAS, 7.5 MINUTE QUAD (TOPOGRAPHIC MAP) PUBLISHED BY THE UNITED STATES DEPARTMENT OF THE INTERIOR, GEOLOGICAL SURVEY. SAID ELEVATION IS MARKED AS BEING 1274 FEET.

BASIS OF BEARINGS

BASIS OF BEARINGS IS A G.P.S. OBSERVATION.

1" Square Bolt In Asphalt Road 0.1' Below Ground
NAD 83
37.021122°
98.457764°

5/8" Rebar, Yellow Plastic Cap, Gilson Eng.
LS #1278, 0.2' High
NAD 83
37.021117°
98.438825°



5/8" Rebar, Yellow Plastic Cap, Gilson Eng. LS #1278
NAD 83
37.006514°
98.457853°

5/8" Rebar, Yellow Plastic Cap, Gilson Eng. LS #1278, 1.0' Below Road
NAD 83
37.006561°
98.438744°

Spike 0.1' Below Road In Intersection
NAD 83
36.998436°
98.457903°

5/8" Rebar, Blue Plastic Cap, LS #1213
0.1' Below Road In Intersection
NAD 83
36.998403°
98.438700°

LINE TABLE		
LINE	BEARING	LENGTH
L1	N03°31'17"E	530.97'

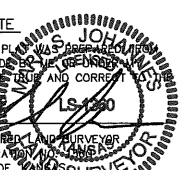
LEGEND:

- └─┘ = 90° SYMBOL
- = PROPOSED WELL HEAD.
- ▲ = SECTION CORNERS LOCATED.

NAD 83 (TARGET BOTTOM HOLE)	NAD 83 (FORMATION ENTRY)	NAD 83 (#18-1H SURFACE LOCATION)
LATITUDE = 37°00'49.67" (37.013797)	LATITUDE = 37°00'02.50" (37.000694)	LATITUDE = 36°59'57.26" (36.999239)
LONGITUDE = 98°26'53.38" (98.448161)	LONGITUDE = 98°26'53.67" (98.448242)	LONGITUDE = 98°26'54.07" (98.448353)
NAD 27 (TARGET BOTTOM HOLE)	NAD 27 (FORMATION ENTRY)	NAD 27 (#18-1H SURFACE LOCATION)
LATITUDE = 37°00'49.57" (37.013769)	LATITUDE = 37°00'02.40" (37.000667)	LATITUDE = 36°59'57.16" (36.999211)
LONGITUDE = 98°26'52.11" (98.447808)	LONGITUDE = 98°26'52.40" (98.447889)	LONGITUDE = 98°26'52.80" (98.448000)

CERTIFICATE

THIS IS TO CERTIFY THAT THE ABOVE PLAT IS A TRUE AND CORRECT REPRESENTATION OF THE FIELD NOTES OF ACTUAL SURVEYS MADE UNDER MY SUPERVISION AND THAT THE SAME ARE TRUE AND CORRECT TO THE BEST OF MY KNOWLEDGE AND BELIEF.



REVISED: 02-03-12 C.C.
REVISED: 10-19-11 C.C.
REVISED: 09-29-11
REVISED: 09-22-11

REGISTERED LAND SURVEYOR
REGISTRATION NO. 4350
STATE OF KANSAS
12

UINTAH ENGINEERING & LAND SURVEYING		
85 SOUTH 200 EAST - VERNAL, UTAH 84078 (435) 789-1017		
SCALE 1" = 1000'	DATE SURVEYED: 09-13-11	DATE DRAWN: 09-20-11
PARTY L.S. K.H. J.J.	REFERENCES G.L.O. PLAT	
WEATHER WARM	FILE SGOMI	