

# T35S, R9W, 6th P.M.

## SGOMI

Well location, CHAIN LAND 3509 #11-2H, located as shown in the NW 1/4 NW 1/4 of Section 11, T35S, R9W, 6th P.M., Harper County, Kansas.

### BASIS OF ELEVATION

SPOT ELEVATION LOCATED AT THE NORTHEAST CORNER OF SECTION 22, T33S, R7W, 6th P.M. TAKEN FROM THE ANTHONY, QUADRANGLE, KANSAS, HARPER COUNTY, 7.5 MINUTE QUAD (TOPOGRAPHIC MAP) PUBLISHED BY THE UNITED STATES DEPARTMENT OF THE INTERIOR, GEOLOGICAL SURVEY. SAID ELEVATION IS MARKED AS BEING 1348 FEET.

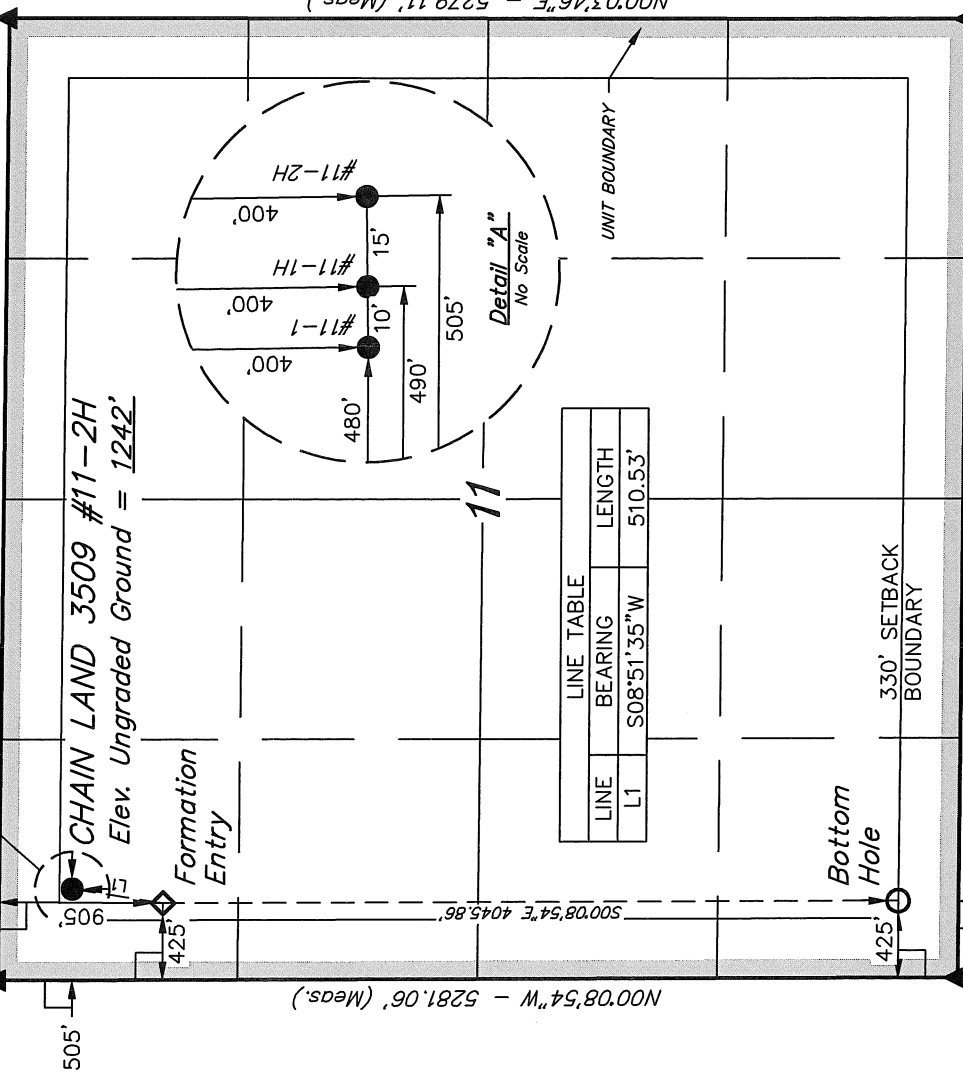
### BASIS OF BEARINGS

BASIS OF BEARINGS IS A G.P.S. OBSERVATION.

2" Alum. Cap  
NAD 83  
Lat: 37.021475°  
Long: 98.255539°

See Detail "A"  
@ Below Right

N89°37'18"W - 5324.14' (Meas.)



N00°03'46"E - 5279.11' (Meas.)

2" Alum. Cap  
NAD 83  
Lat: 37.021550°  
Long: 98.273775°

505'

N00°08'54"W - 5281.06' (Meas.)

S00°08'54"E 4045.86'

2" Alum. Cap  
NAD 83  
Lat: 37.007044°  
Long: 98.273695°

N89°38'28"W - 5304.66' (Meas.)

2" Alum. Cap  
NAD 83  
Lat: 37.006978°  
Long: 98.255531°

### LEGEND:

- ◻ = 90° SYMBOL
- = PROPOSED WELL HEAD.
- ▲ = SECTION CORNERS LOCATED.

| FORMATION ENTRY                      | NAD 83 (#11-2H FORMATION ENTRY)      | NAD 83 (#11-2H SURFACE LOCATION)     |
|--------------------------------------|--------------------------------------|--------------------------------------|
| LATITUDE = 37°00'28.61" (37.007947)  | LATITUDE = 37°01'08.61" (37.019058)  | LATITUDE = 37°01'13.60" (37.020444)  |
| LONGITUDE = 98°16'20.08" (98.272244) | LONGITUDE = 98°16'20.30" (98.272306) | LONGITUDE = 98°16'19.34" (98.272039) |
| NAD 27 (#11-2H TARGET BOTTOM HOLE)   | NAD 27 (#11-2H FORMATION ENTRY)      | NAD 27 (#11-2H SURFACE LOCATION)     |
| LATITUDE = 37°00'28.51" (37.007919)  | LATITUDE = 37°01'08.52" (37.019033)  | LATITUDE = 37°01'13.50" (37.020417)  |
| LONGITUDE = 98°16'18.83" (98.271897) | LONGITUDE = 98°16'19.05" (98.271958) | LONGITUDE = 98°16'18.09" (98.271692) |



### CERTIFICATE

THIS IS TO CERTIFY THAT THE ABOVE PLAT WAS PREPARED FROM FIELD NOTES OF ACTUAL SURVEYS MADE BY ME OR UNDER MY SUPERVISION AND THAT THE SAME ARE TRUE AND CORRECT TO THE BEST OF MY KNOWLEDGE AND BELIEF.



UNTAH ENGINEERING & LAND SURVEYING  
85 SOUTH 200 EAST - VERNAL, UTAH 84078  
(435) 789-1017

|         |                |                |             |             |          |
|---------|----------------|----------------|-------------|-------------|----------|
| SCALE   | 1" = 1000'     | DATE SURVEYED: | 01-08-12    | DATE DRAWN: | 01-19-12 |
| PARTY   | L.S. D.S. C.C. | REFERENCES     | G.L.O. PLAT |             |          |
| WEATHER | COLD           | FILE           | SGOMI       |             |          |