

T35S, R9W, 6th P.M.

SGOMI

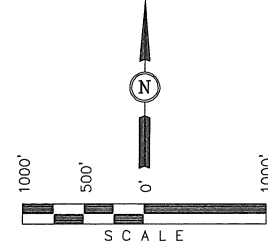
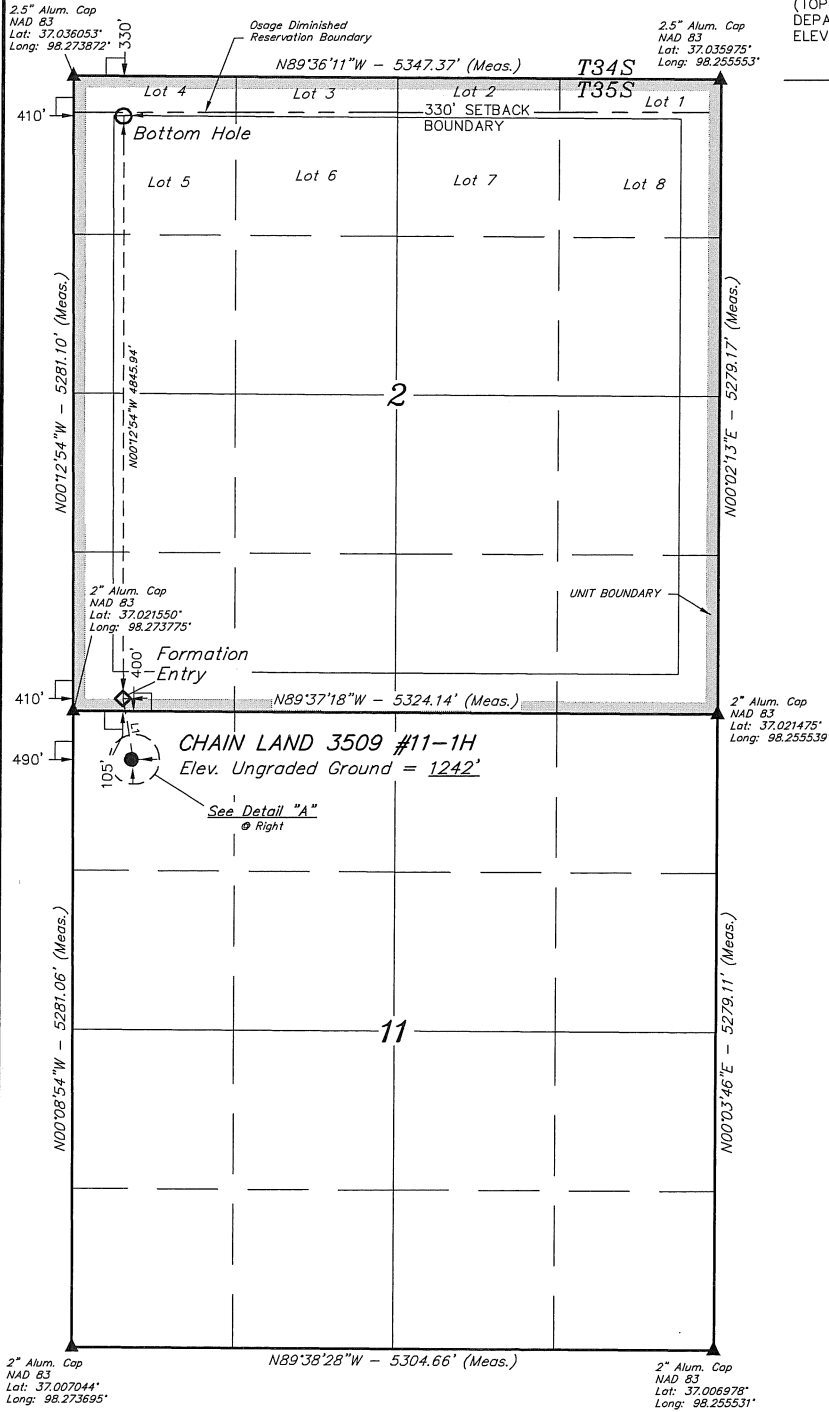
Well location, CHAIN LAND 3509 #11-1H, located as shown in the NW 1/4 NW 1/4 of Section 11, T35S, R9W, 6th P.M., Harper County, Kansas.

BASIS OF ELEVATION

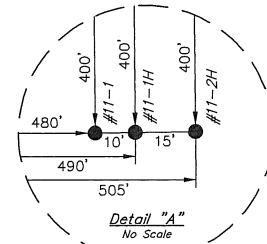
SPOT ELEVATION LOCATED AT THE NORTHEAST CORNER OF SECTION 22, T33S, R7W, 6th P.M. TAKEN FROM THE ANTHONY, QUADRANGLE, KANSAS, HARPER COUNTY, 7.5 MINUTE QUAD (TOPOGRAPHIC MAP) PUBLISHED BY THE UNITED STATES DEPARTMENT OF THE INTERIOR, GEOLOGICAL SURVEY. SAID ELEVATION IS MARKED AS BEING 1348 FEET.

BASIS OF BEARINGS

BASIS OF BEARINGS IS A G.P.S. OBSERVATION.



LINE TABLE		
LINE	BEARING	LENGTH
L1	N09°09'05"W	512.20'



CERTIFICATE
 THIS IS TO CERTIFY THAT THE ABOVE PLAT WAS PREPARED FROM THE FIELD NOTES OF ACTUAL SURVEYS MADE BY ME OR UNDER MY SUPERVISION AND THAT THE SAME ARE TRUE AND CORRECT TO THE BEST OF MY KNOWLEDGE AND BELIEF.
 JOHNSON
 REGISTERED LAND SURVEYOR
 REGISTRATION NO. 1390
 STATE OF KANSAS
 01-08-12

REVISED: 01-27-12 S.L.

UNTAH ENGINEERING & LAND SURVEYING		
85 SOUTH 200 EAST - VERNAL, UTAH 84078		
(435) 789-1017		
SCALE	1" = 1000'	DATE SURVEYED: 01-08-12
PARTY	L.S. D.S. C.C.	DATE DRAWN: 01-19-12
WEATHER	COLD	REFERENCES: G.L.O. PLAT
		FILE: SGOMI

LEGEND:

- └─┘ = 90° SYMBOL
- = PROPOSED WELL HEAD.
- ▲ = SECTION CORNERS LOCATED.

NAD 83 (#11-1H TARGET BOTTOM HOLE) LATITUDE = 37°02'06.51" (37.035142) LONGITUDE = 98°16'20.86" (98.272461)	NAD 83 (#11-1H FORMATION ENTRY) LATITUDE = 37°01'18.60" (37.021833) LONGITUDE = 98°16'20.54" (98.272372)	NAD 83 (#11-1H SURFACE LOCATION) LATITUDE = 37°01'13.60" (37.020444) LONGITUDE = 98°16'19.52" (98.272089)
NAD 27 (#11-1H TARGET BOTTOM HOLE) LATITUDE = 37°02'06.42" (37.035117) LONGITUDE = 98°16'19.61" (98.272114)	NAD 27 (#11-1H FORMATION ENTRY) LATITUDE = 37°01'18.50" (37.021806) LONGITUDE = 98°16'19.29" (98.272025)	NAD 27 (#11-1H SURFACE LOCATION) LATITUDE = 37°01'13.50" (37.020417) LONGITUDE = 98°16'18.27" (98.271742)