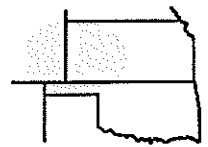


Pro-Stake LLC
 Oil Field & Construction Site Staking
 P.O. Box 2324
 Garden City, Kansas 67846
 Office/Fax: (620) 276-6159
 Cell: (620) 272-1499



t012612-j
 PLAT NO.

9831
 INVOICE NO.

Ritchie Exploration, Inc.

#1 Simons 24A

OPERATOR

LEASE NAME

Wichita County, KS

24 **17s** **35w**
 Sec. Twp. Rng.

840' FNL - 2180' FEL

COUNTY

LOCATION SPOT

SCALE: **1" = 1000'**
 DATE STAKED: **Jan. 26th, 2012**
 MEASURED BY: **Ben R.**
 DRAWN BY: **Luke R.**
 AUTHORIZED BY: **Justin C.**

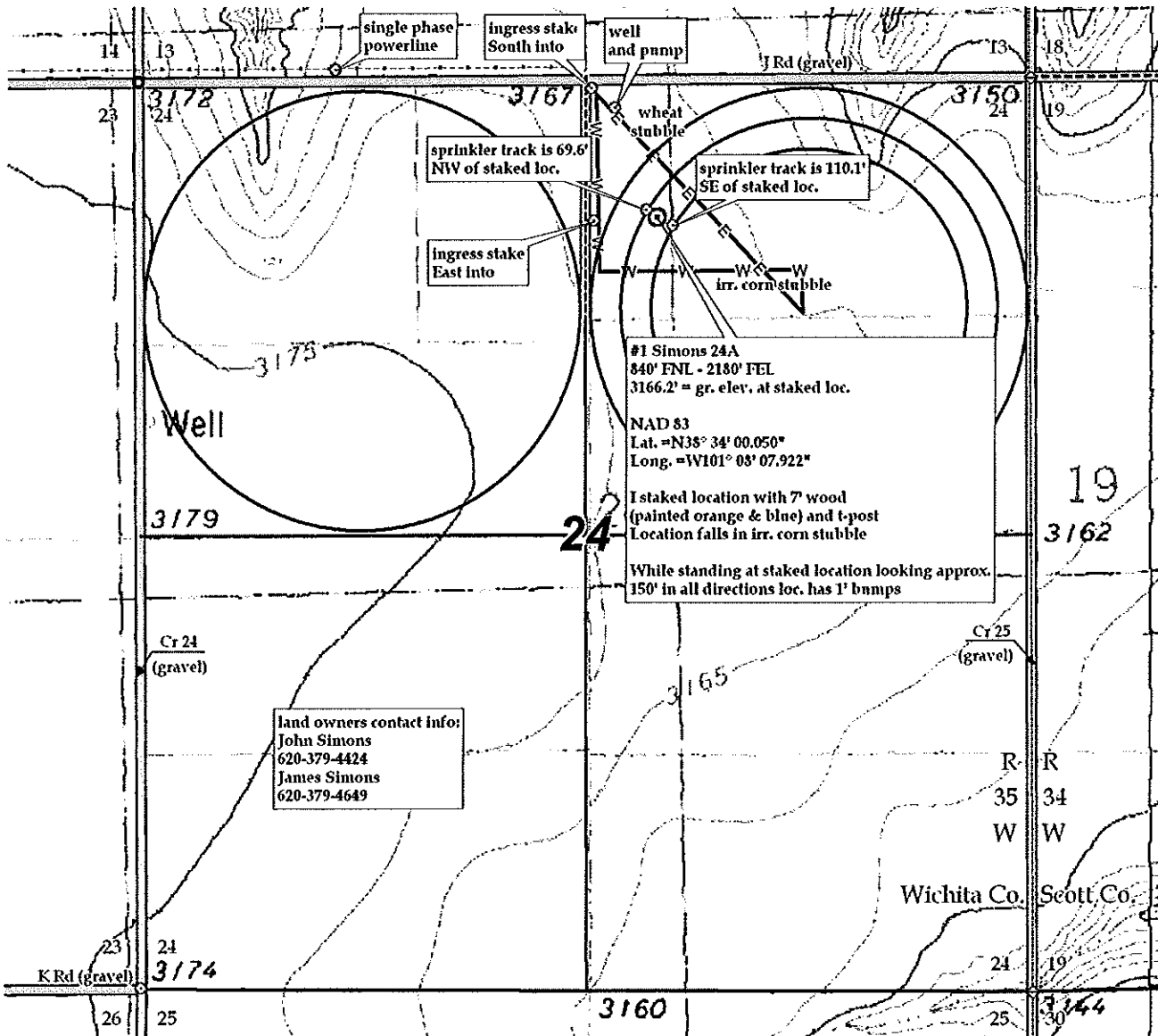
GR. ELEVATION: **3166.2'**



Directions: From approx. 0.3 mile South of the South Side of Marienthal Ks at the intersection of Hwy 96 & Hwy 167 North - Now go 4.6 miles East on Hwy 96 - Now go 6 miles North on county line rd/Cr 25 to the NE corner of section 24-17s-35w - Now go 0.5 mile West on J Rd to ingress stake South into - Now go 0.2 mile South on trail to ingress stake East into - Now go approx 150' East through wheat stubble - Now go approx. 270' East through irr. corn stubble into staked location.

Final ingress must be verified with land owner or Operator.

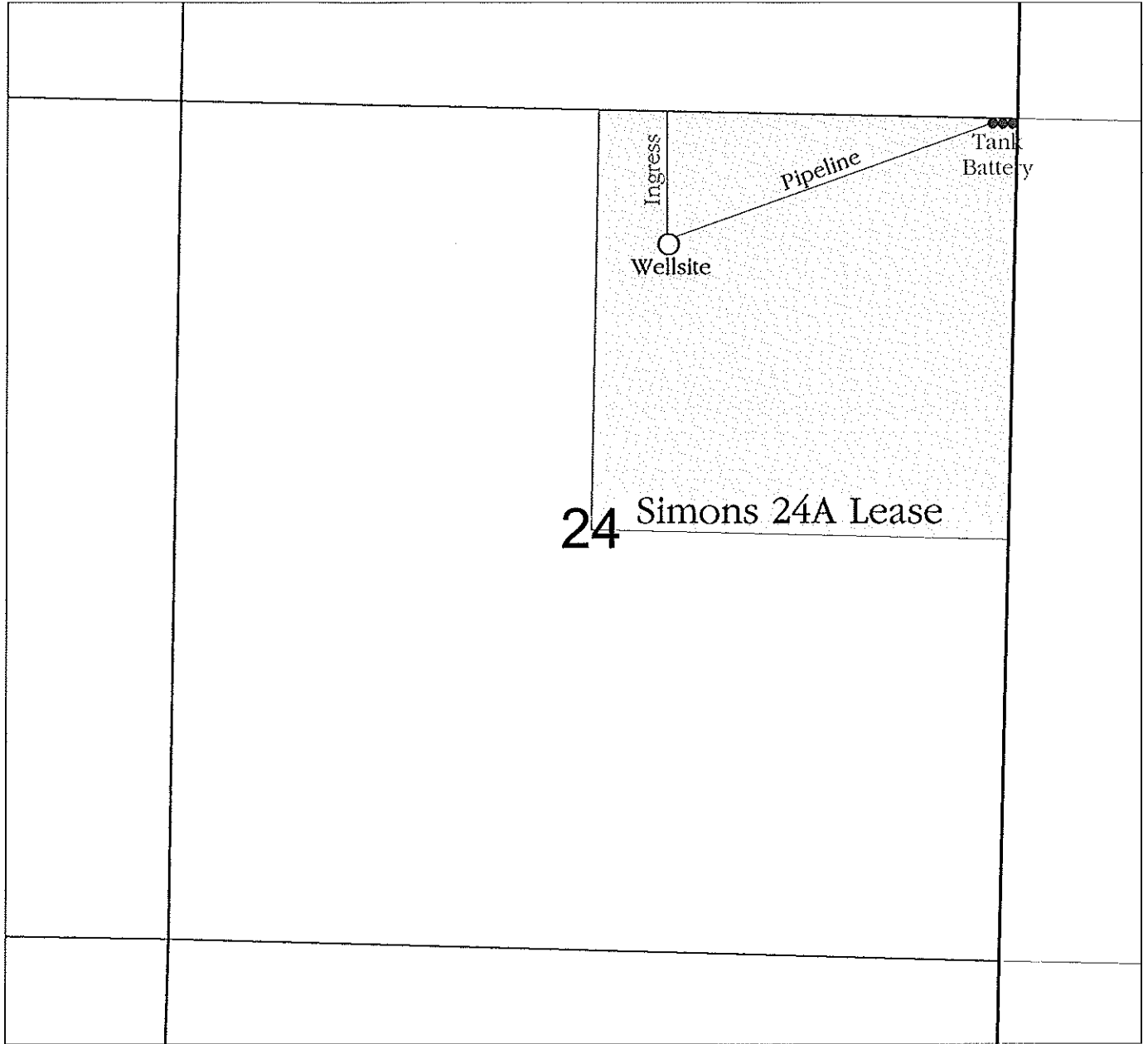
This drawing does not constitute a monumented survey or a land survey plat. This drawing is for construction purposes only.



KANSAS SURFACE OWNER NOTIFICATION ACT

R 35 W

T
17
S



24 Simons 24A Lease

SCALE = 1 : 12,000

WICHITA COUNTY, KANSAS